

CITY OF SALEM
PARKS AND RECREATION ADVISORY BOARD (SPRAB)
ON-LINE MEETING AGENDA

Si necesita ayuda para comprender esta información, por favor llame 503-588-6003.

Individuals needing special accommodations such as sign language, foreign language interpreters or equipment for the hearing impaired must request such services at least 48 hours prior to the meeting. To request accommodations or services, please call 503-588-6211 or 503-588-6003 (TTD/TTY 503-588-6439), or by e-mail at: twhitler@cityofsalem.net at least two business days in advance.

This regular meeting of the Salem Parks and Recreation Advisory Board will take place online on a Zoom format. This page will tell you how to participate in a digital format. The agenda for the meeting is on page two.

DIGITAL MEETING INFORMATION

You can participate digitally by viewing the meeting on the City of Salem YouTube channel. Please note: You will see the meeting appear on the YouTube channel at 5:30 p.m. or just shortly thereafter.

- From a computer, tablet, or smart phone:
https://www.youtube.com/channel/UCQLj9RKZNHu4wfYcs_TC0TA
- Find additional materials related to the meeting and a recording following this meeting at the SPRAB web page: <https://www.cityofsalem.net/Pages/parks-and-recreation-advisory-board.aspx>

PLEASE PROVIDE PUBLIC COMMENT THROUGH EMAIL

You will have an opportunity to provide comment prior to the digital meeting. The City asks that you email comments in advance of the meeting, and they will be addressed in the meeting during the public comment period for agenda and non-agenda items. **Email comments prior to 4:00 p.m. June 11, 2020 to Toni Whitler, Parks Planner at twhitler@cityofsalem.net .**

CONTACT INFORMATION

The City of Salem and the Salem Parks and Recreation Advisory Board thank you for your support by using the digital format. For any questions or concerns about the above information, please contact Toni Whitler, Parks Planner, at twhitler@cityofsalem.net or 503-588-6211.

It is the City of Salem's policy to assure that no person shall be discriminated against on the grounds of race, religion, color, sex, marital status, familial status, national origin, age, mental or physical disability, sexual orientation, gender identity, and source of income, as provided by Salem Revised Code 97. The City of Salem also fully complies with the Title VI of the Civil Rights Act of 1964, Americans with Disabilities Act of 1990, and related statutes and regulations, in all programs and activities.

Es la política de la Ciudad de Salem asegurar que ninguna persona será discriminada por motivos de raza, religión, color, sexo, estado civil, situación familiar, origen nacional, edad, discapacidad mental o física, orientación sexual, identidad de género, ni fuente de ingresos, de acuerdo con el Salem Revised Code Chapter 97. La Ciudad de Salem también cumple plenamente con el Title VI of the Civil Rights Act of 1964, y los estatutos y reglamentos relacionados, entodos los programas y actividades.

**CITY OF SALEM
PARKS AND RECREATION ADVISORY BOARD
DIGITAL AGENDA
June 11, 2020 – 5:30 to 7:00 p.m.**

**BOARD MEMBERS, CITY STAFF &
UPCOMING MEETINGS**

BOARD MEMBERS

Dylan McDowell, Chair
Micki Varney, Vice Chair
Alan Alexander
Tony Caito
Diana Dickey
Woody Dukes
Dave Fridenmaker
Paul Rice

CITY STAFF

Robert Chandler, Assistant Public
Works Director
Mark Bechtel, Operations Division
Manager
Patricia Farrell, Parks and Natural
Resources Planning Manager
Jennifer Kellar, Parks and Recreation
Services Manager
Becky George, Recreation Supervisor
Milan Davis, City Urban Forester
Toni Whitler, Parks Planner & Board
Liaison

UPCOMING MEETINGS

- July 9, 2020, 5:30 p.m.
Next regular SPRAB Meeting (online)

LINKS

BOARD WEB PAGE:

<https://www.cityofsalem.net/Pages/parks-and-recreation-advisory-board.aspx>

AGENDA

1. CALL TO ORDER
2. ROLL CALL
3. PUBLIC COMMENT
4. MINUTES
 - a. May 14, 2020
5. BOARD ITEMS/PRESENTATIONS
 - a. Eagle's View Park Draft Master Plan – Toni Whitler, Derek Sergison, ESA – **ACTION REQUIRED**
 - b. Draft Letter Supporting Expansion of Park Ranger Duties – Chair McDowell - **ACTION REQUIRED**
6. INFORMATION REPORTS
 - a. Mission Street Park Conservancy Report – Christine Chute
 - b. Urban Forestry Report – Milan Davis
 - c. Parks Planning Update – Patricia Farrell
 - d. Parks Operations Update – Jennifer Kellar
 - e. Status of Unsheltered Persons Camping in City Parks – Mark Bechtel, Operations Division Manager
 - f. Recreation Services Update – Becky George
 - g. Parks Damage Report
7. NEXT MEETING
 - a. July 9, 2020
8. ADJOURN



SALEM PARKS AND RECREATION ADVISORY BOARD
DIGITAL MEETING
May 14, 2020
DRAFT MINUTES

MEMBERS PRESENT

Alan Alexander
Tony Caito
Diana Dickey
Woody Dukes
David Fridenmaker
Dylan McDowell
Paul Rice
Micki Varney

MEMBERS ABSENT

STAFF PRESENT

Patricia Farrell
Jennifer Kellar
Milan Davis
Becky George
Toni Whitler

1. ROLL

All present

2. APPROVAL OF MINUTES

January 9, 2020 minutes approved. February 13, 2020 minutes approved with correction.

3. PUBLIC COMMENT

No public comment.

4. PRESENTATIONS

Agenda Change: Item 6.a moved to 4.a

a. Expansion of Park Ranger Duties and Service Area – Suzanne Reynolds, Code Compliance Supervisor, Community Development

Ms. Reynolds presented an informational report that will be going forward to City Council to request an expansion of the Park Ranger’s duties.

Member Varney: Is the position three-quarter time? No, it was increased to full time in 2017 and concentrated in four parks: Riverfront, Marion, Minto-Brown Island, and Wallace Marine Parks.

Chair McDowell: There is currently one person? Ms. Reynolds replied yes.

Member Dickey: Code enforcement officers cannot conduct enforcement in parks? Ms. Reynolds replied that Code Enforcement can enforce certain ordinances to which they are sworn. They are not sworn to enforce in parks.

Member Rice: He is at Minto Brown Island Park a fair amount. There has been a presence of police and code enforcement officers there. Is there a reason why there is a higher profile at MBIP? Ms. Reynolds said there has been a larger police presence due to higher numbers of people at the park and complaints about dogs off leash.

Chair McDowell asked what they can do to support. Ms. Whitler replied that the Board could send a letter of support to City Council ahead of the information report. Ms. Reynolds said the report is going forward to Council on July 17.

Member Alexander suggested it is a good idea as long as the primary focus is enjoyment of parks and dealing with safety issues.

Chair McDowell suggested that he and Member Alexander draft a letter of support and bring it back to the Board in June for approval.

b. Our Salem Update – Eunice Kim, Community Development

Ms. Kim provided a brief overview and update on the status of the Our Salem project which is an update to the Salem Comprehensive Plan.

Member Rice: Filled out an online questionnaire is there another? Ms. Kim replied yes there is a second survey.

Chair McDowell wondered if other cities have models of hubs for Salem? Ms. Kim replied, many cities have small scale hubs for people to walk to.

Ms. Kim asked what the Board thinks about expanding Riverfront Park. Member Dickey replied, if it is a choice between expanding Riverfront Park and Hubs, she would choose hubs because there are areas underserved. There are definite possibilities for features that may not look like the other parts of Riverfront Park, such as a river walk. Ms. Kim clarified that her question was separate from discussion regarding hubs.

Additional questions:

- How is a hub different than a strip mall? Ms. Kim said she is not envisioning a strip mall in a single- family neighborhood, but homes converted into mixed office retail with some design standards involved.
- Could community centers be considered a hub? Ms. Kim said yes and no. She has heard people say they'd like to see a combination of the two. The idea of having a gathering space can be provided through a hub.
- Could hubs have grocery stores? Ms. Kim doesn't see a hub being that large, it could be a small corner shop such as a bakery. There are some food deserts in Salem, and the City is working on providing access to fresh food but probably not a full-size store.

c. Board Survey *Roles, Goals, and New Ideas* Results and Discussion – Dylan McDowell

In lieu of a Board retreat due to the COVID19 virus, the Board received a survey to receive input on current and new roles for the Board. Chair McDowell highlighted some of the results.

Member Varney supports having a brief overview of park facts available to members. Member Rice believes it would provide to members a broader picture of what is going on in the parks and challenges. Member Alexander said it is important that we are factually correct when we speak with other groups.

5. INFORMATION REPORTS

a. Milan Davis, Urban Forestry Update – Milan Davis

Mr. Davis provided a brief status update.

Member Rice said Davis has hit the ground running and given an accurate picture of where we are with our tree canopy. He likes the idea of door hangers to inform residents of work being done.

b. Salem Revised Code, Chapter 86, Trees on City Owned Property, Potential Revisions to Administrative Rule – Patricia Farrell

Ms. Farrell briefly summarized potential changes to the administrative rule.

c. Parks Planning Update – Patricia Farrell

Ms. Farrell provided a brief update on current park planning projects.

Member Dukes: At what point will SPRAB liaisons be involved in Bush's Pasture Park Cultural Landscape Plan? Ms. Farrell replied that it is up to him, but he will be part of the stakeholder interviews.

d. Parks Operations Update – Jennifer Keller

Ms. Keller provided an update on current park operations, maintenance budget and projects.

e. Recreation Services Update – Becky George

Ms. George provided an update on Recreation Services.

Non-agenda questions:

- With regard to safer routes to parks and advocating a traffic or transportation study by staff for this issue. The response by staff was that this question will be taken to the Transportation section for a response. Member Varney also brought up an additional issue of a pedestrian crossing to Orchard Heights Park. Both of these questions will be addressed by Transportation Planning.
- To what extent will the documents related to the Integrated Pest Management Plan update be available to the public and to what extent will the public have an opportunity to comment? Will SPRAB review? Does it go to the Council for approval? Ms. Farrell responded that there will be a liaison from SPRAB involved and a final draft will be posted for public comment.

6. NEXT MEETING

July 9, 2020

7. ADJOURN

7:00 p.m.

FOR BOARD MEETING OF: June 11, 2020
AGENDA ITEM NO.: 5.a.

TO: SALEM PARKS AND RECREATION ADVISORY BOARD

**THROUGH: ROBERT CHANDLER, PHD, PE
ASSISTANT PUBLIC WORKS DIRECTOR**

**FROM: TONI WHITLER
PARKS PLANNER II**

SUBJECT: EAGLE'S VIEW PARK MASTER PLAN

ISSUE:

Shall SPRAB endorse the Eagle's View Park Master Plan and forward a recommendation to City Council for adoption?

RECOMMENDATION:

Endorse the Eagle's View Park Master Plan and forward a recommendation to City Council for adoption.

BACKGROUND:

The Eagle's View Park Master Plan (Attachment 1) presents the overall park design, describes the appropriate amenities and uses for the park, and provides guidelines for its future development. The plan has been developed in consideration of community input and the unique aspects of the site.

Encompassing five acres, Eagle's View Park is an undeveloped neighborhood park located in west Salem. A neighborhood park provides local access to basic recreation resources for residents within a half-mile service area. Presently, the site has interim use improvements including picnic tables, a soft trail, pet waste bag dispensers, trash cans, and a bridge that crosses a drainageway. The soft trail was built by west Salem neighbors and the bridge was constructed by an Eagle Scout candidate.

The park is surrounded by low density single-family residential housing. Several multi-family housing complexes are located at the outer extent of the half-mile neighborhood park service area. The park borders Eagle's Wing Street NW to the east and Stellar's Eagle Street NW to the west. Pedestrian access to the park is available from both of these streets.

Park design guidelines are provided in the 2013 Comprehensive Park System Master Plan. Typical neighborhood park facilities include playground equipment, sports courts, picnic tables, pedestrian paths, multi-use turf fields, and passive recreation opportunities. Amenities considered not appropriate for the neighborhood park classification include off-street parking, dog parks, and facilities with community-wide draw.

A landscape architecture firm, Environmental Science Associates, was hired through the City's public contracting process to assist with public outreach and presentations and to provide graphic design.

FACTS AND FINDINGS:

1. As depicted in Attachment 1, the Eagles View Park Master Plan identifies the following elements for the park:
 - Picnic shelter
 - Playground with embankment slide and scramble
 - Multi-use court
 - Open lawn for drop-in play and gathering area
 - Drainageway enhancements and bridge crossing
 - Outdoor fitness pods;
 - Practice disc golf baskets
 - Pollinator habitat area
 - Hard and soft surface paths
 - Shade trees and landscape enhancements
 - Site furnishings such as benches and drinking fountain
2. The Eagle's View Park Master Plan has been developed through a robust public process facilitated by City staff and the consultant, Environmental Science Associates. This process included three public workshops and two separate online surveys. Workshop attendance averaged 25 individuals at each meeting. Responses to the first survey totaled 52; the second survey received 93 responses. The workshops and surveys were advertised through a combination of postcard mailers, posting of fliers, email-based newsletters, visits to West Salem Neighborhood Association meetings, and the City's website.
3. The West Salem Neighborhood Association was presented the draft park master plan on May 18, 2020 via a Zoom meeting platform. The plan was approved unanimously by the Board (Attachment 2).
4. Funding for some of the amenities at Eagle's View Park will be provided through Park System Development Charges. Additional funding may be provided through a combination of a local government grant from the Oregon Department of Parks and Recreation, individual and corporate donations, and volunteer services as these opportunities become available.
5. Development of the park master plan will be dependent on funding and will likely proceed in at least two phases.

Attachments:

1. Draft Eagle's View Park Master Plan Report
2. West Salem Neighborhood Association Minutes 051820

Eagle's View Park

Master Plan 2020



Public Works Department

This page intentionally left blank



TABLE OF CONTENTS

1.0 Introduction 1

 1.1 Master Plan Purpose 1

 1.2 Park History 1

 1.3 Related Plans and Goals 2

2.0 Existing Conditions 4

 2.1 Natural Resources 4

 2.2 Site Analysis 6

 2.3 Opportunities and Constraints 7

3.0 Planning Process 8

 3.1 Community Engagement 8

4.0 Master Plan 12

 4.1 Costs and Phasing 14

 4.2 Funding Sources 14

APPENDIX

A. Public Outreach Material 15

B. Survey Results 17

C. Cost Estimate 49

This page intentionally left blank



1.0 INTRODUCTION

1.1 Master Plan Purpose

Eagle's View Park is a five-acre undeveloped neighborhood park located in the northwestern portion of Salem. Development of the park will help fulfill the basic recreational needs of West Salem Neighborhood residents within the one-half mile service area of the park (*Figure 1*). This document describes future park improvements as a guide for subsequent park design and development. It was prepared in order to understand the current conditions of the park, to help generate and build community interest and participation, and to create a common vision for the future of the park.

1.2 Park History

Eagle's View Park was identified as a potential neighborhood park location in the 1999 Comprehensive Park System Master Plan. The park property was purchased in 2006 as part of the Eagle's View residential development. Funding for acquisition came from Parks System Development Charges (PSDC).

Neighborhood involvement began early in 2010 with the development of a soft trail around the perimeter of the park through a volunteer work party. In 2017, a petition signed by surrounding neighbors was submitted to the City requesting a master plan and development of the park. In 2019, interim improvements were funded through PSDCs and included re-establishment of the soft trail, picnic tables, pet waste bag dispensers, and trash cans.

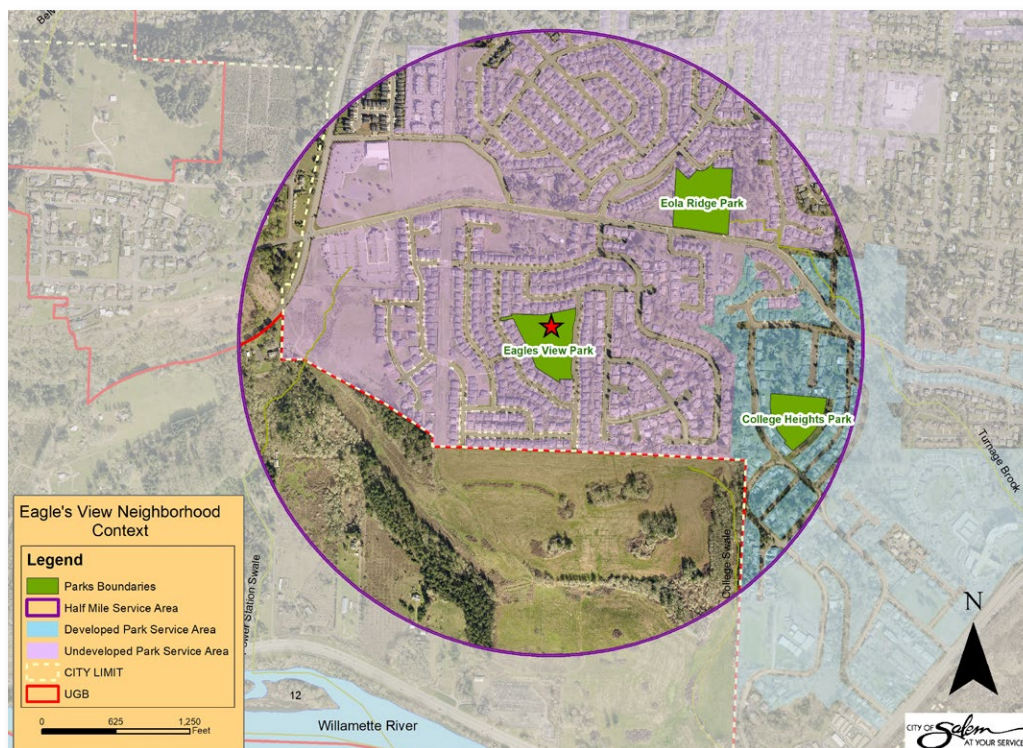


Figure 1. Neighborhood Context Map

1.3 Related Plans and Goals

West Salem Neighborhood Plan 2004

The West Salem Neighborhood Plan, adopted in 2004, identifies goals and policies related to parks and open space. The following goals outlined in Chapter 6 of the Neighborhood Plan have been fully considered by the City of Salem with respect to acquisition and the master planning process and will be considered in future development of the neighborhood park.

Goal 6: Provide for the recreation needs of the West Salem area through the acquisition and development of adequate parks and recreation facilities for all age groups.

Policy 6.1: Acquire, develop, and maintain public parks as recommended by the Comprehensive Parks System Master Plan. Early acquisition of park sites shall be considered in anticipation of future needs and to minimize land costs as described in the Urban Growth Management Program.

Policy 6.3: Give special consideration to sites identified on the Parks and Natural Resource Opportunities Map. Development of these sites or adjacent properties should consider that they are potentially valuable community or natural resources.

Goal 7: Conserve, restore, and reclaim open space and natural resources including the Willamette River Greenway, stream corridors, wildlife habitat, tree groves, and significant mature trees.

Policy 7.1: Maintain, and when possible, restore the natural resource functions and intrinsic values of all designated stream corridors, significant wetlands, designated riparian areas, and significant trees in West Salem.

Policy 7.2(b) Removal of invasive vegetation and replanting with native species where appropriate, unless such action compromises slope stability.

Salem Comprehensive Park System Master Plan Update 2013

The Salem Comprehensive Park System Master Plan Update (CPSMP), completed in 2013, is an update to the 1999 Comprehensive Parks System Master Plan. This is a system-wide plan that describes specific goals and policies for the City's park system including park classifications and amenities appropriate for each classification.

Eagle's View Park is classified within the CPSMP as a Neighborhood Park and the context of this report will reflect the policies and guidelines as administered through the CPSMP including standard and optional amenities or features that are appropriate for this classification. Below is a table of these features. Features listed as "not appropriate" are those typically more appropriate in Community or Urban Parks that allow for larger numbers of visitors and provide appropriate support features for these facilities.

Types of Features for Neighborhood Parks

Standard Features	Optional Features	Not Appropriate Features
<ul style="list-style-type: none"> • Picnic Area • Site furnishings (trash receptacles, bike racks, pet waste stations, etc.) • Playground or play features • Internal pedestrian trails • Open turf area (minimum 50 feet x 50 feet) • Trees • On-street parking • security lighting 	<ul style="list-style-type: none"> • Practice sports fields (baseball, soccer, softball, or other athletic fields) • Sports courts (basketball, tennis, multi-use court, etc.) • Small-scale active recreation resources (skate spot, horseshoe pits, disc golf hole, etc.) • Community garden • Multi-use trails/paths • Soft trails/paths • Shelter, shade structure, or gazebo • Lighting • Seasonal chemical toilet 	<ul style="list-style-type: none"> • Dog parks • Parking • BMX/mountain bike trails • Aquatic facilities (splash fountains or pools) • Destination facilities or resources with community-wide draw • Memorials (except for memorial trees or benches)

Table 1. Standard, Optional, & Not Appropriate Features for a Neighborhood Park Classification (Salem Comprehensive Park System Master Plan, 2013).

Salem Community Forestry Strategic Plan

In acknowledgment of the many economic, environmental, and social benefits provided by trees, the *City of Salem Community Forestry Strategic Plan* establishes six specific goals to increase, preserve, manage, and provide education about Salem’s tree canopy. The plan also recommends a 28-percent city-wide canopy goal. Tree cover within the West Salem Neighborhood is among the highest in the City at approximately 19-percent. There is still a need for additional tree planting in this area. Eagle’s View Park Master Plan identifies additional tree planting in conjunction with development.

2.0 EXISTING CONDITIONS

2.1 Natural Resources

Topography

The topography is characterized by slopes between 2 and 15 percent. The site generally slopes from the northwest corner with elevation of 508 feet south and east to a low point of 475 feet at the central, open drainageway. The northwest corner provides an overview of the park. On clear days, more distant east views of the Cascade Range can be enjoyed.



Figure 2. Sensitive Area Map



Figure 3. Looking southeast from NW corner of park



Figure 4. Blackberries in drainageway

Drainageway

A drainageway runs west to east across the center of the site. It conveys stormwater runoff from the properties and roadways to the west. The drainageway has a direct flow line with no check dams and therefore, does not provide detention, causing erosion during large events. The west trail crossing washed out in 2019 and a small boardwalk crossing was recently installed by volunteers. A blackberry thicket dominates the drainageway and provides minimal water quality benefit.

Soils

The soils at Eagle's View Park consist of Nekia Silty Clay Loam and Jory Silty Clay Loam. Both soils are found in foothill slopes, are well drained, with moderately slow permeability. These soils work well for park development features such as grass seed, wildlife, and a variety of trees.

Vegetation

The park site is primarily grass with full sun exposure. There are four existing trees along the perimeter. These include three mature cherry trees on the west boundary that were planted by a resident, and one poplar tree on the north boundary. The drainageway in the center of the site is overgrown with invasive Himalayan blackberry.

2.2 Site Analysis

The park is located less than one-half mile from the edge of the Salem Urban Growth Boundary and the city limits. Single-family housing is the predominant surrounding land use with some multi-family housing located at the outer extent of the park service area. The park is in close proximity to several other parks. Both College Heights and Eola Ridge Parks are within a mile.

Neighborhood Access

Eagle's View Park is accessed along the east boundary from the public right-of-way along Eagle's Wing Street NW. Park grades vary along the right-of-way. Additional access to the west boundary is provided by two 10-foot wide public walkways off Stellar's Eagle Street NW. Both of these walkways are narrow, confined by neighbor's fences, and offer limited views into the park. The northwest entrance provides an accessible route due to existing curb ramps and the gradually sloping topography descending from this high point. The west entrance is located at a school bus stop and enters the park at a low point near the drainage inlet with moderate slopes between. All access points have street lighting.



Figure 5. View from west entrance



Figure 6. View along Eagle's Wing Street Road, NW

Utilities

City water and sewer lines are located along Steller's Eagle Street NW and Eagle's Wing Street NW. The park's west and northwest entrance points are both sewer easements with lines that come through the site at the high point and lowest area along the drainage ditch. Street lighting is located along both adjacent streets and provide an opportunity for a power connection.

2.3 Opportunities and Constraints

Opportunities and constraints to park development were evaluated based on existing conditions and potential recreation facilities. Factors such as landscape, topography, community preferences, and operational and maintenance requirements provide the context for weighing the types of activities that could be located at the park. Key opportunities and constraints are summarized below.

Green Areas	0-5% slopes which are ideal for open fields and site development.
Tan Areas	5 - 10% slopes require minor grading for site development.
Red Areas	10-15% slopes preclude most development and provide accessibility challenges.

Table 2: Development analysis for areas of grade at Eagle's View Park



Figure 7. Site analysis map

Key development opportunities and constraints are noted in the following table based on the exiting site grades and features.

Key Opportunities	Key Constraints
<ul style="list-style-type: none"> • Flat high-elevation open area with views overlooking the park and towards Mt. Hood, Mt. Jefferson, and the Three Sisters in NW corner. • Easy access from Eagles Wing Street and west easements. • Full sun exposure • Sloped embankments for playground slides and scrambles. • Drainageway enhancement can be a focal point of the park 	<ul style="list-style-type: none"> • Slopes from 5 -15% provide challenges for accessible paths • Sloped areas may require walls or significant earthwork to develop • Drainage area must be maintained to handle storm events • Sound travels across the park

Table 3. Key Opportunities and Constraints for Eagle's View Park development.

3.0 PLANNING PROCESS

3.1 Community Engagement



Figure 8. City staff presenting at open house

Public engagement is an important part of the planning process and includes the surrounding neighbors, the West Salem Neighborhood Association, Salem Parks and Recreation Advisory Board, and City Council. This ensures that the vision created for Eagle's View Park has been fully vetted and there has been ample opportunity for public input.

Three public meetings and two online surveys were held to gather input contributing to the completion of the master plan. Public open house meetings were announced through a combination of mailers, emails, and an Eagle's View Park Master Plan

web page. A postcard with all three public meeting dates was sent to residents within the one-half mile service area for the park. The postcard also provided contact information, an opportunity to sign up for email updates, and a web page address for the planning process. Both the email updates and the web page provided reminders of upcoming meetings, online survey links and reports, meeting summaries, and conceptual plans for review. (Public outreach materials are found in *Appendix A*.)

First Open House and Online Survey: Site Analysis & Programming



On November 20, 2019, staff held the first public open house that featured a presentation about the park and the master planning process. There were twenty-five people in attendance. The meeting provided opportunities to address questions and included an activity for attendees to share their thoughts on priorities for future park development. An online survey provided the same scenario of options as provided at the open house. Fifty

Figure 9. Program concepts with voting dots

people responded to the online survey. The input received from both the open house and the online survey formed two design alternatives. (Public meeting and online survey results are found in *Appendix B*.)

Second Open House and Online Survey: Design Alternatives

Two design alternatives were shared at the second open house on January 15, 2020. There were twenty-three people in attendance. The neighbors reviewed the designs and were asked to select their preferred design alternative, and provided comments on the elements for each design. The second and final online survey provided the same scenario of reviewing the two design options, selecting one and providing comments about each. Ninety-three people responded to the survey. The comments received from the second workshop and survey provided the information needed to form a preferred design alternative. (Public meeting and online survey results are found in *Appendix B*.)

	Alternative 1 – Open Lawn	Alternative 2 – Wild Pollinator
Open Lawn	0.75 Acres	.05 Acres
Gathering Area	Separate from Playground; Views of Mt. Jefferson	Connected to Playground; Best Views of Cascade and park entrances
Sport Court	Multi-Use (TBD)	3-Point Basketball
Playground	Structures, Swings and Climbers	Scramble Embankment & Slide
Disc Golf	none	3 Practice Putting Holes
Fitness Pods	3 Exercise areas around park	none
Trees/Planting	Accent Tree Alley	Native pollinator pockets



Figure 10. Side-by-side design alternatives

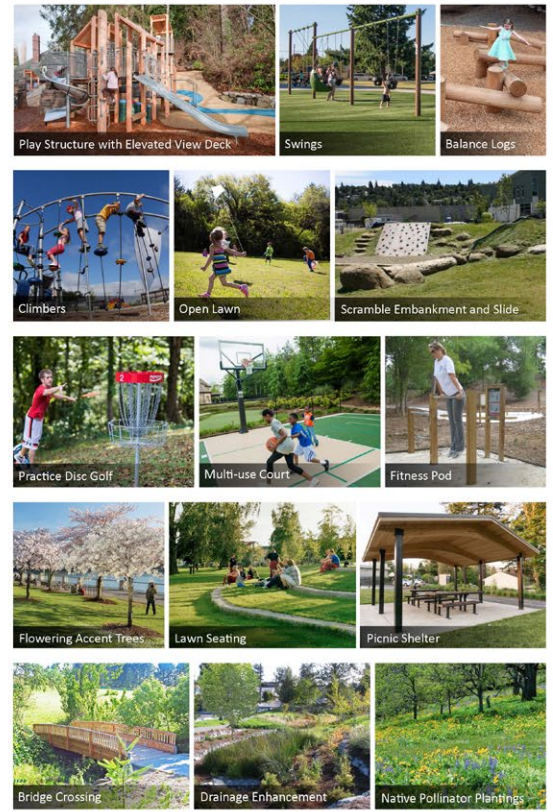
Third Open House: Preferred Design Alternative

The third and final open house was held on February 26, 2020 to review the preferred design alternative for Eagle's View Park. The purpose of this meeting was to receive acceptance of the preferred design alternative and share information on the next steps in the master planning process. There were nineteen people in attendance, and the preferred design was well received by participants. Following the final open house, the design became the draft park master plan to move forward for review.

Additional Public Meetings

EAGLE'S VIEW PARK MASTER PLAN

2020



CITY OF *Salem* AT YOUR SERVICE Preferred Alternative Plan
EAGLE'S VIEW PARK MASTER PLAN

2-18-2020
ESA

Figure 11 Preferred Design Alternative

The Eagle's View Park draft master plan was presented to the West Salem Neighborhood Association on May 18, 2020. Following the presentation, the Association endorsed the draft master plan. A presentation was also made to the Salem Parks and Recreation Advisory Board on June 11, 2020. The Board was asked to approve the plan and forward a recommendation to City Council to adopt the master plan.

At its July 27, 2020 public meeting, City Council was asked to adopt the park master plan.

4.0 MASTER PLAN



Figure 12. Draft Park Master Plan

The site design reflected in the master plan has been shaped by public input. Site improvements include both passive and active uses.

Passive Uses

- Open lawn
 - Located at the highest elevation overlooking the park
 - Existing slopes minimizes the need for significant grading or retaining walls.
- Network of paved paths and soft-surface trails
 - 8-foot wide accessible, paved pedestrian paths and vehicle-rated pavement for maintenance access located around the lawn. The vehicle entry shall be determined during future design phase and may require a driveway apron with curb cuts.
 - A central path lined with flowering trees connecting park entrances and the bridge crossing the drainage enhancement.
 - 6-foot bark mulch secondary paths connecting through landscape areas

- Gathering area with picnic shelter connected to playground and open lawn.
 - Located at a high central location and provides views of both the park access points for safety and of the Cascade Range.
- Picnic tables and benches throughout the park.
- Drainage enhancements with bridged crossing to access south portion of park.

Active Uses:

- Playground with climbing scramble embankment and slide. Playground equipment will be selected during a future design phase with additional public input.
- Disc golf practice area with two baskets spaced approximately 100 feet apart and placed near the base of the slope, south of drainage.
- Two fitness pods with exercise equipment located in separate areas of the park to encourage looped exercise routes. Fitness equipment will be selected during a future design phase with additional public input.
- Multi-use sports court located at a low elevation with a 3:1 sloped embankment to help reduce noise carrying across the park. Uses in addition to basketball will be determined during a future design phase with additional public input.

Landscape:

- Native pollinator plantings will provide habitat.
- Shade trees strategically placed to minimize impacts to views.
- Low flowering accent tree allée at park entrances and along path at drainage enhancement.
- Street trees along Eagles Wing Street that are selected from Salem approved street tree list.



Figure 13 Perspective sketch view from northwest corner of park



4.1 COSTS AND PHASING

The cost to construct Eagle's View Park is estimated at approximately \$1.25 million dollars. (A detailed cost breakdown is included in *Appendix C* for reference.) There is an opportunity to construct the park in phases as the City pursues grants and funds through its Capital Improvement Plan to develop the park. A first phase could include pathways, a bridge, open lawn, planting areas, playground, and picnic pad. The multiuse court, fitness pods and disc golf could be part of a future phase. All construction and phasing are dependent on availability of funding.

The drainage enhancements may be constructed as a separate project from the City's stormwater utility fund. All stormwater projects undergo a ranking process to prioritize funding. Should this enhancement be funded prior to the park development, it will need to be integrated as part of the park's design, character, and vision. The bridged crossing elevations and abutments also need to be considered with the site's grading to ensure sloped pathways do not exceed accessible grades.

4.2 FUNDING SOURCES

Funding for the development of the park will be compiled from multiple sources. Park Systems Development Charges (SDCs) can be used to fund development of the park. As opportunities become available, additional funding may be provided through a combination of local government grants from the Oregon Department of Parks and Recreation, individual and corporate donations, and volunteer services. Stormwater utility funds may be used to fund the enhancements to the drainageway.

The design and cost estimation for Phase 1 elements will be developed following the adoption of the Eagle's View Park Master Plan to aid in project planning and potential grant applications.

APPENDIX A - Public Outreach Material

POSTCARD



A postcard mailer sent to residents within a one-half mile service area for Eagle's View Park.

Share your thoughts and ideas on recreation activities, natural environment enhancement, and more at the upcoming neighborhood workshops for the Eagle's View Park Master Plan.

- Public Workshop #1**
Wednesday, November 20, 2019 **Time:** 6:30 p.m. to 8:00 p.m.
- Public Workshop #2**
Wednesday, January 15, 2020 **Location:** Roth's West Salem
(Upstairs in the Founder's Room 'N')
- Public Workshop #3**
Wednesday, February 26, 2020 Hot beverages and cookies will be provided.

FIRST CLASS
US POSTAGE
PAID
SALEM OR
PERMIT NO. 102

Find current information on the Eagle's View Park planning process at www.cityofsalem.net/park-planning

Project Contact
Toni Whittler
City of Salem, Parks Planner
twhittler@cityofsalem.net
503-588-6211



Si necesita ayuda para comprender esta información, por favor llame 503-588-6211. Servicios razonables de alojamiento y accesibilidad se facilitarán por petición.

If you need help understanding this information, please call 503-588-6211. Reasonable accommodation and accessibility services will be provided upon request.

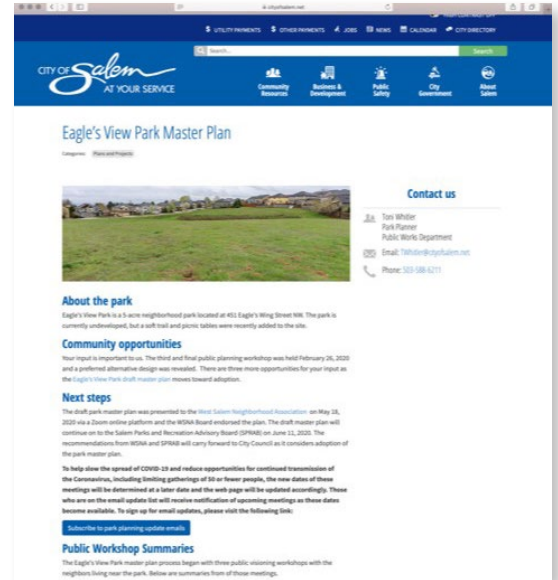
EMAIL

Below is an example of a Mailchimp email: Email #1



MailChimp email updates were sent out to alert recipients of upcoming meetings, online surveys and other pertinent information. There was a total of eleven email notifications sent throughout the process.

WEBSITE



A web page was created and updated with current information pertaining to the planning process. It included public meeting dates, meeting summaries, links to online surveys and results, design graphics, and contact information.



APPENDIX B - Survey Results #1

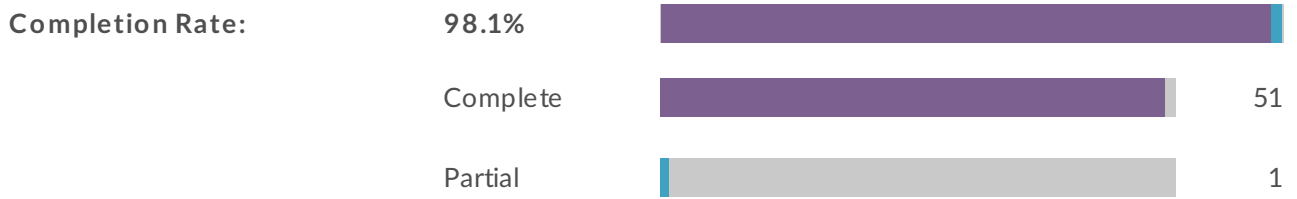
Online Survey Results

Two online surveys were accessible through a link on the Eagle's View Park web page and in a Mailchimp email available to those who signed up to receive email updates. The first survey was open following the first open house on November 20 through December 4, 2019. Fifty-two people responded to the survey.

The second online survey was available following the second open house on January 15 through January 30, 2020. Ninety-three people responded to the survey.

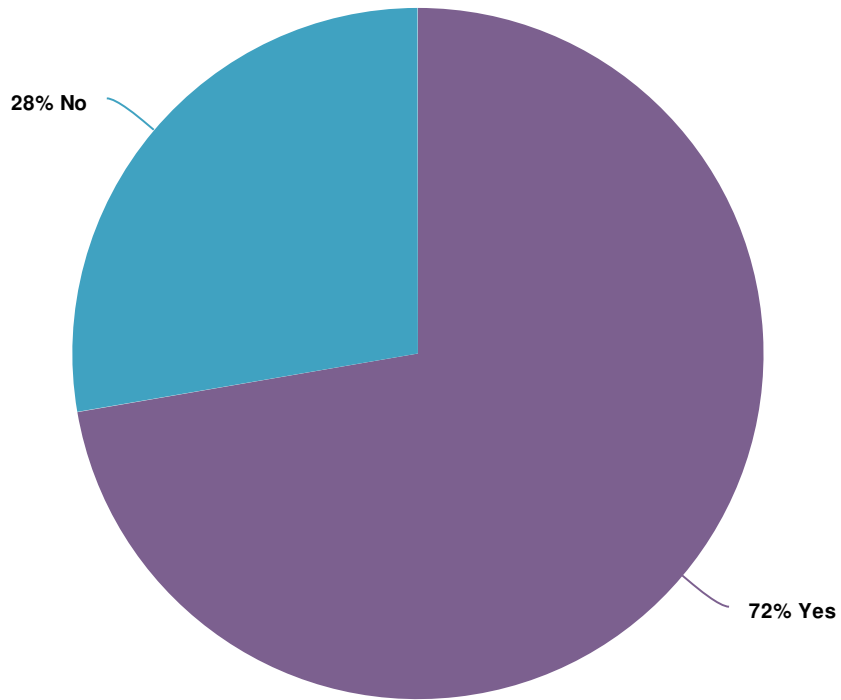
Report for Eagle's View Park Master Plan Survey #1

Response Counts



Totals: 52

1. Are you familiar with Eagle's View Park?



Value	Percent	Responses
Yes	72.3%	34
No	27.7%	13
		Totals: 47

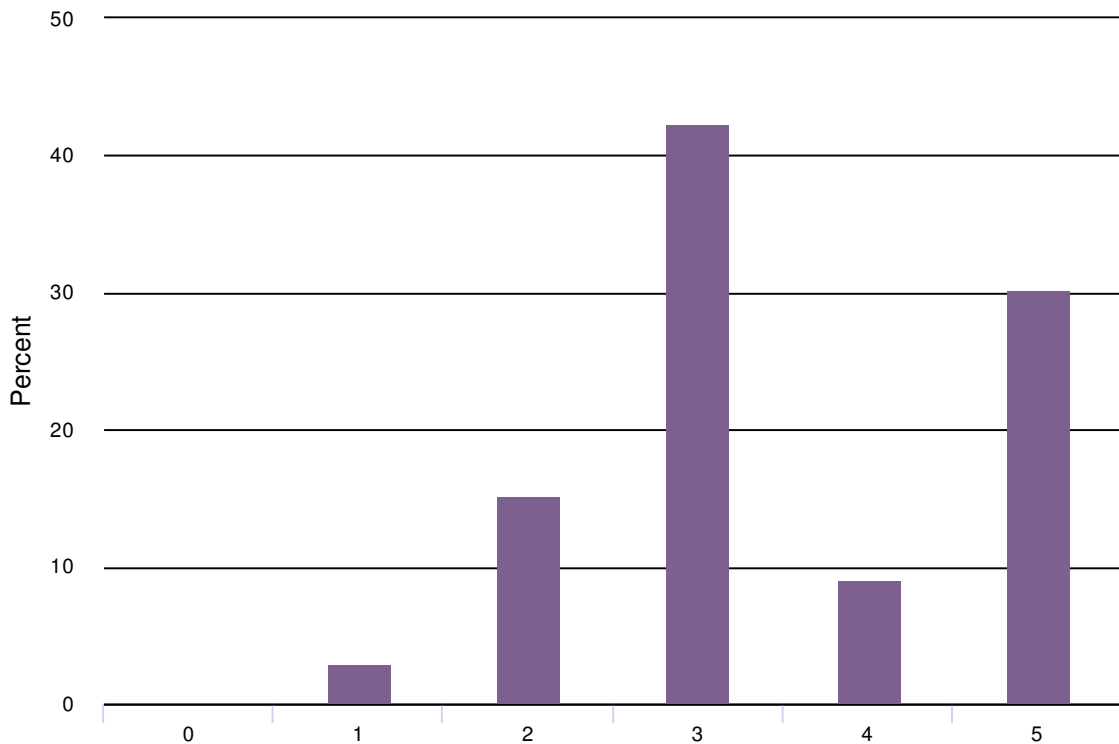
2. Below is a list of park features. Please rate how important each one is to you using a sliding scale of "not important" to "very important."

Dog walk destination

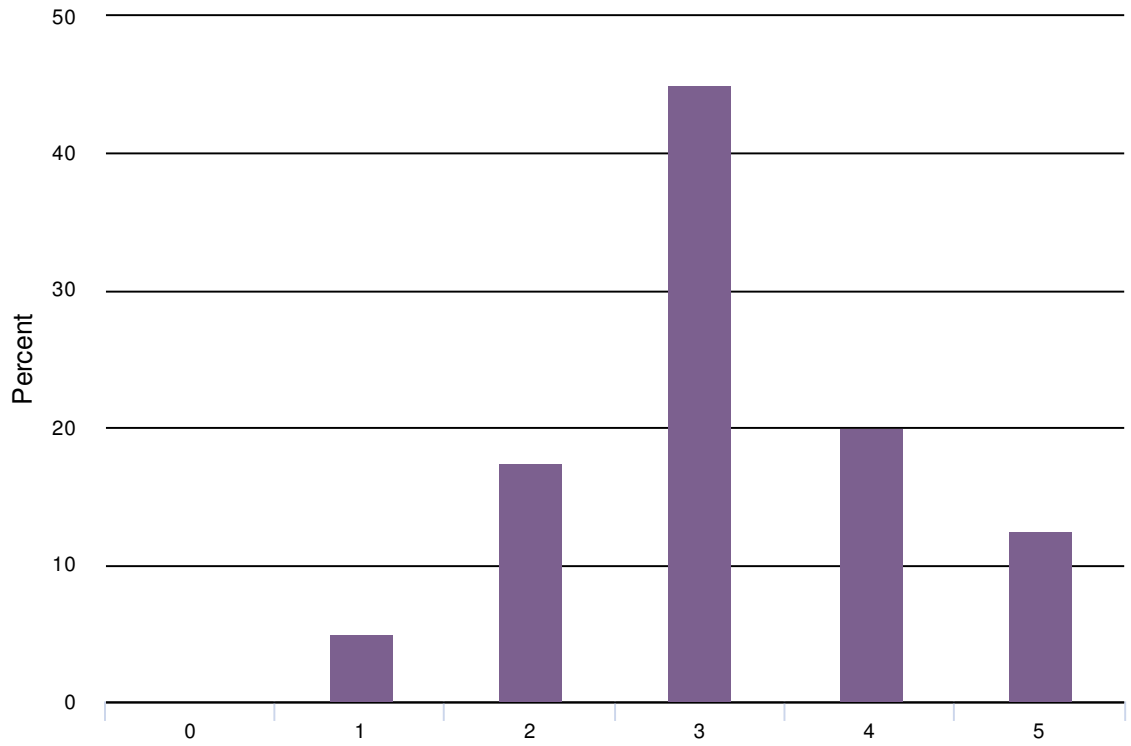
Moderately Important

Very important

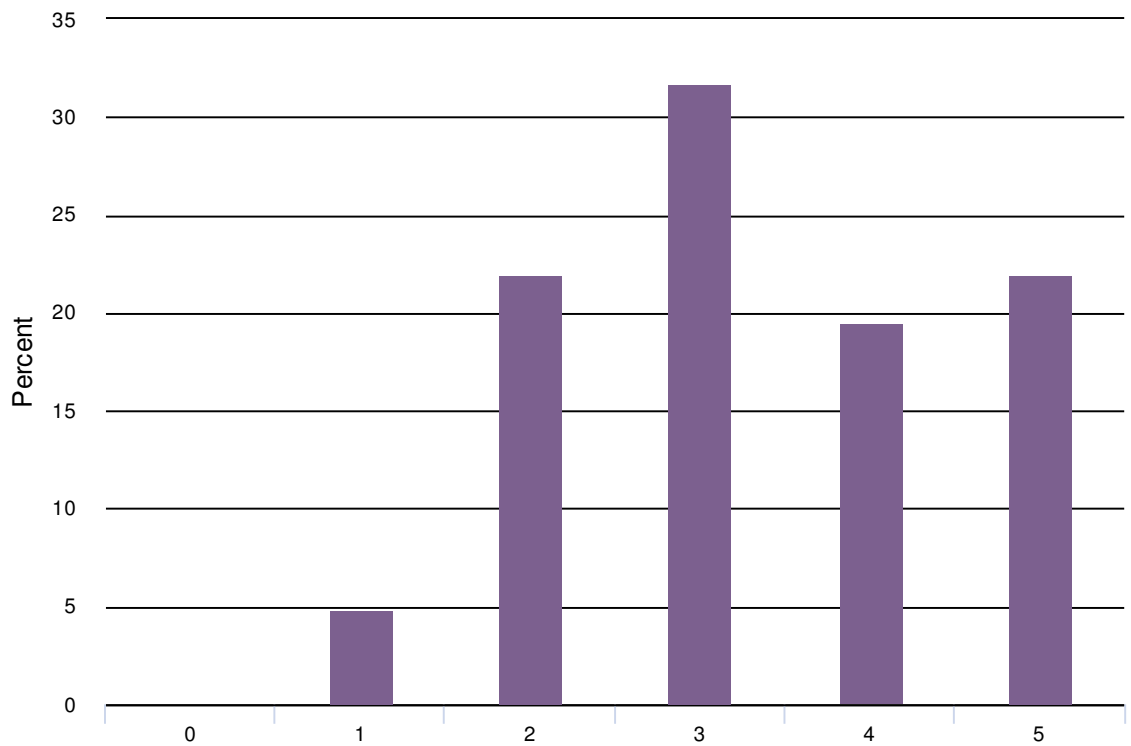
Dog walk destination



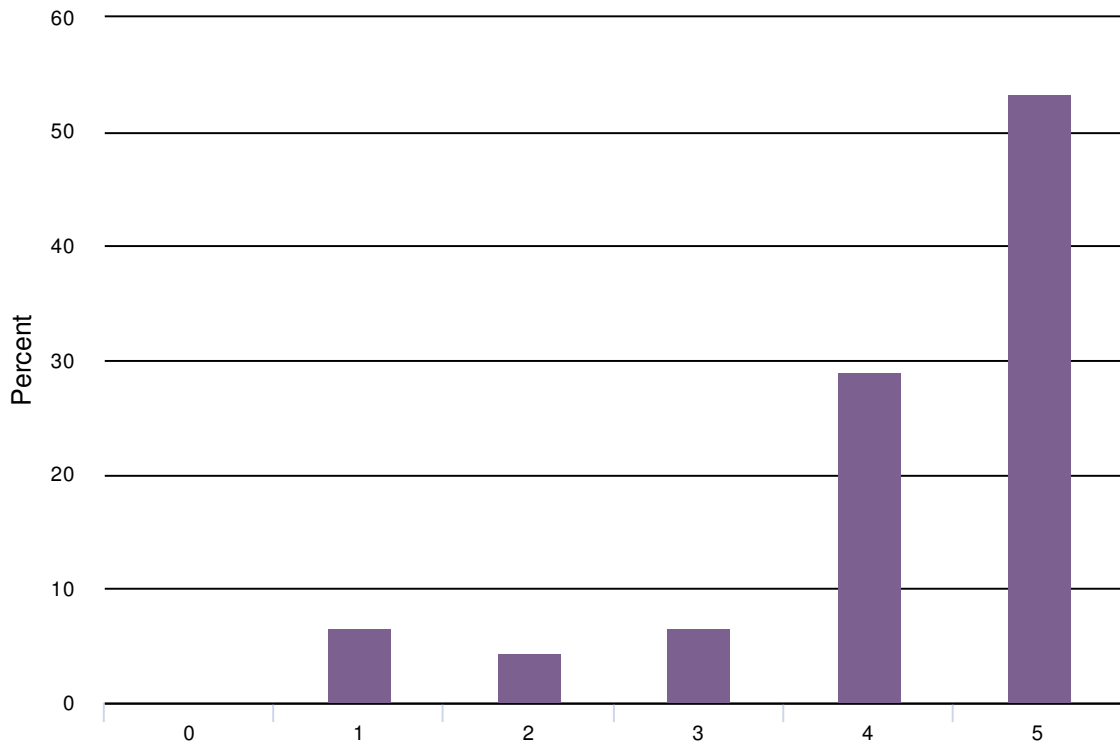
Picnic area



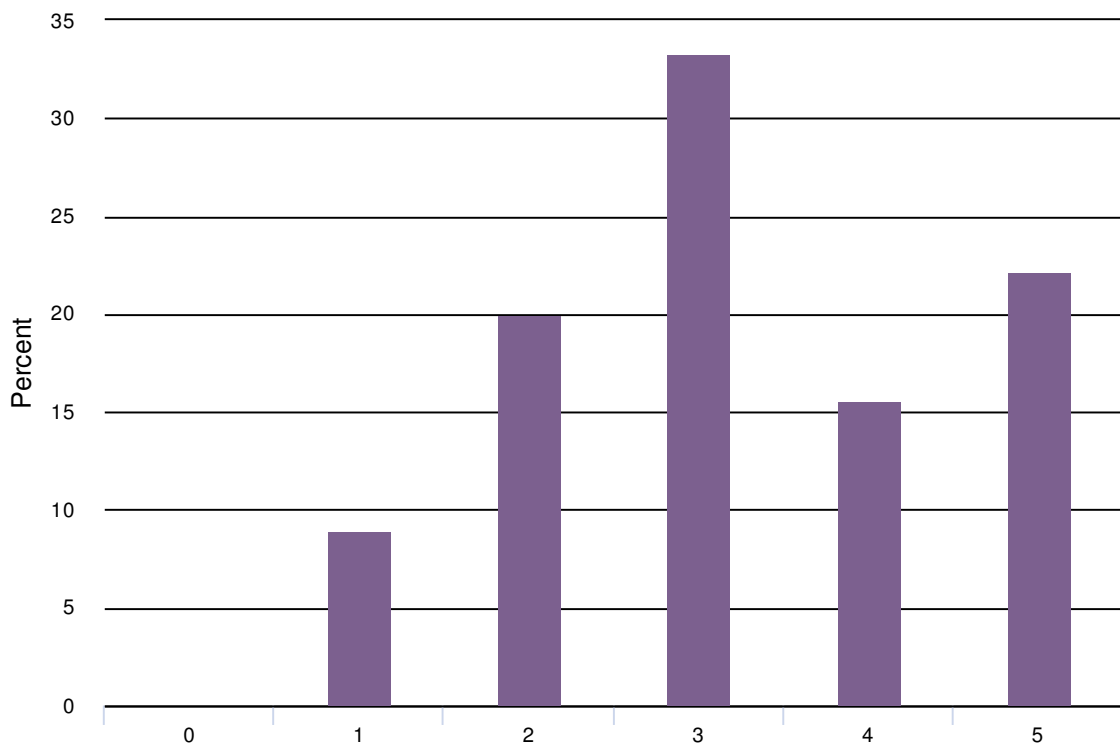
Picnic area with shelter



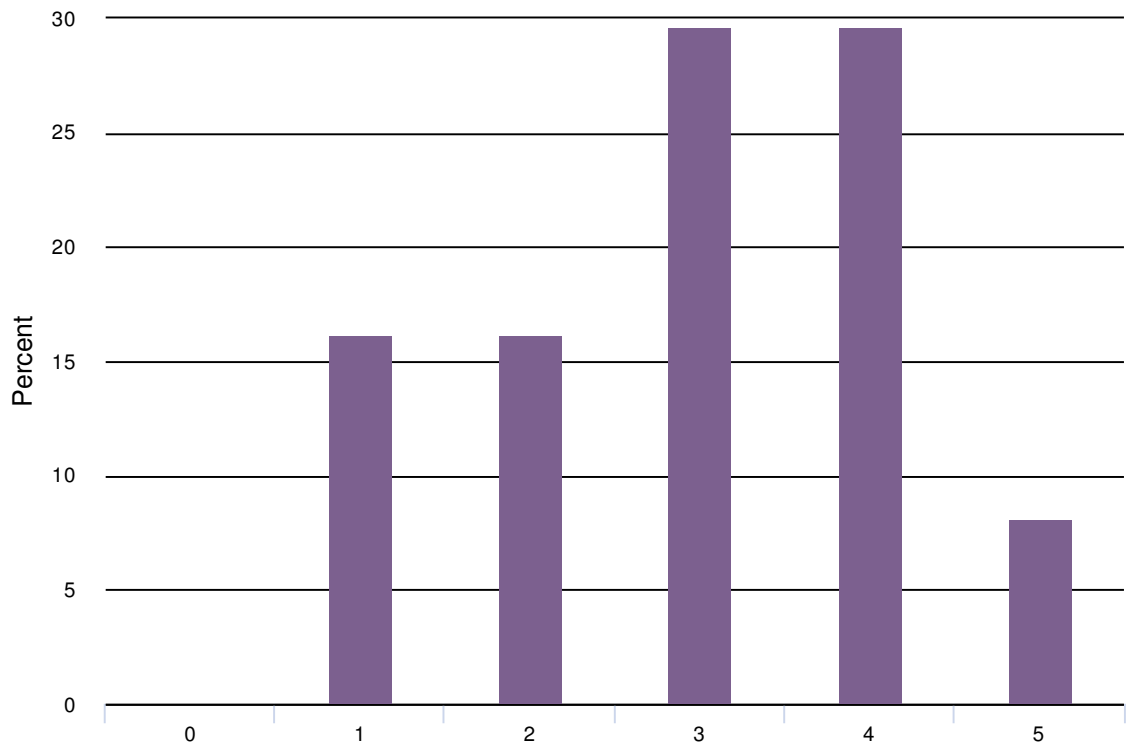
Playground equipment



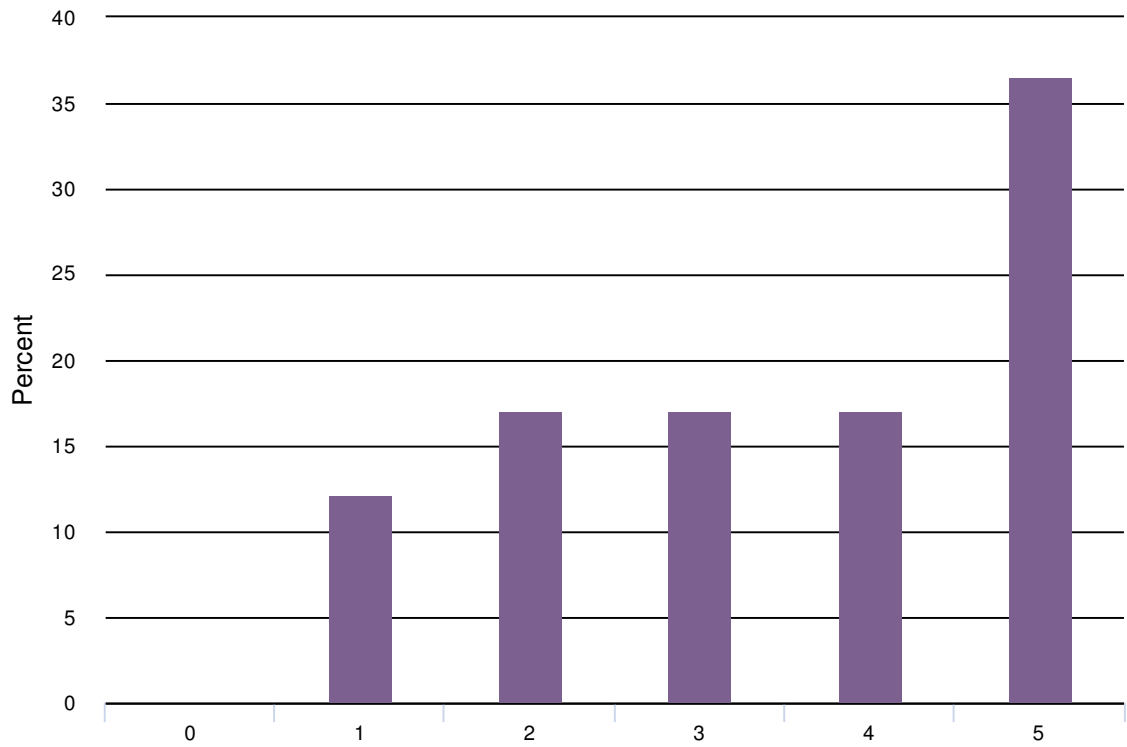
Open meadow



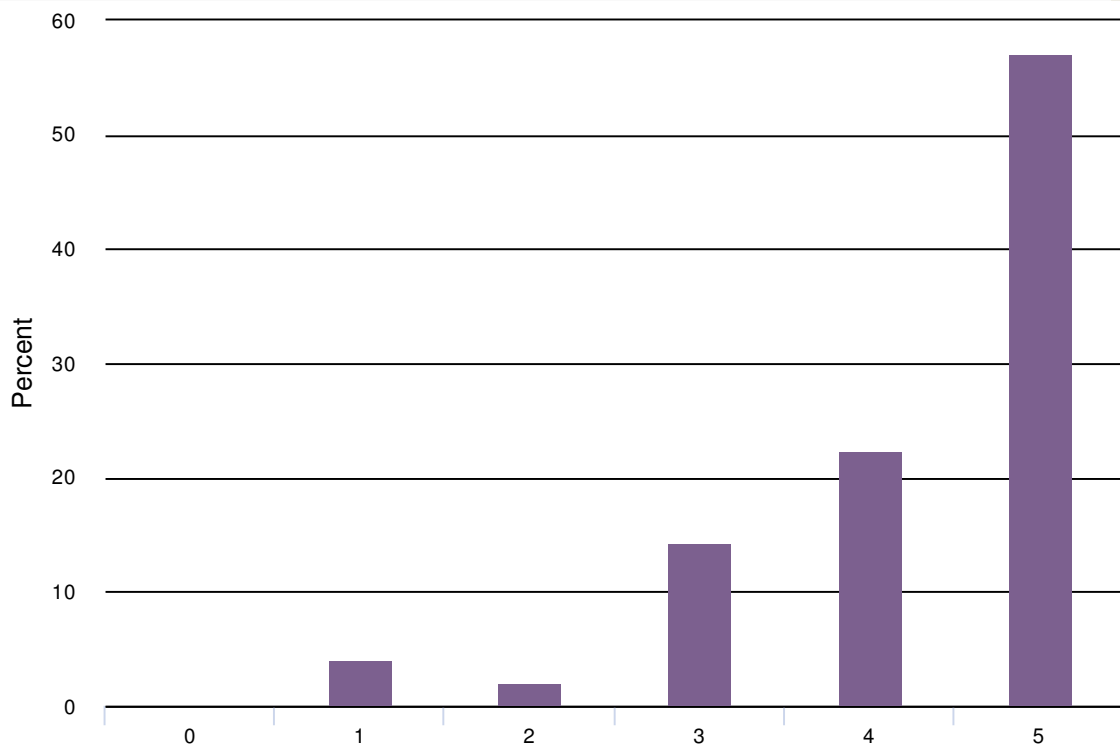
Turf play field



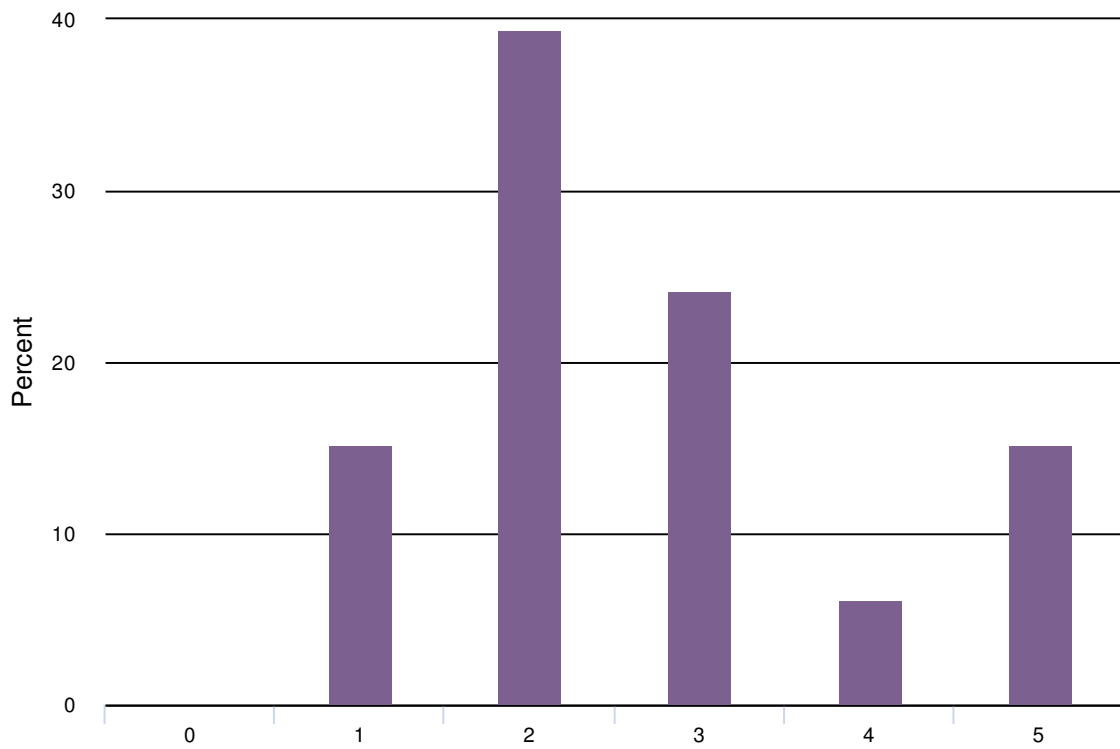
Native pollinator habitat



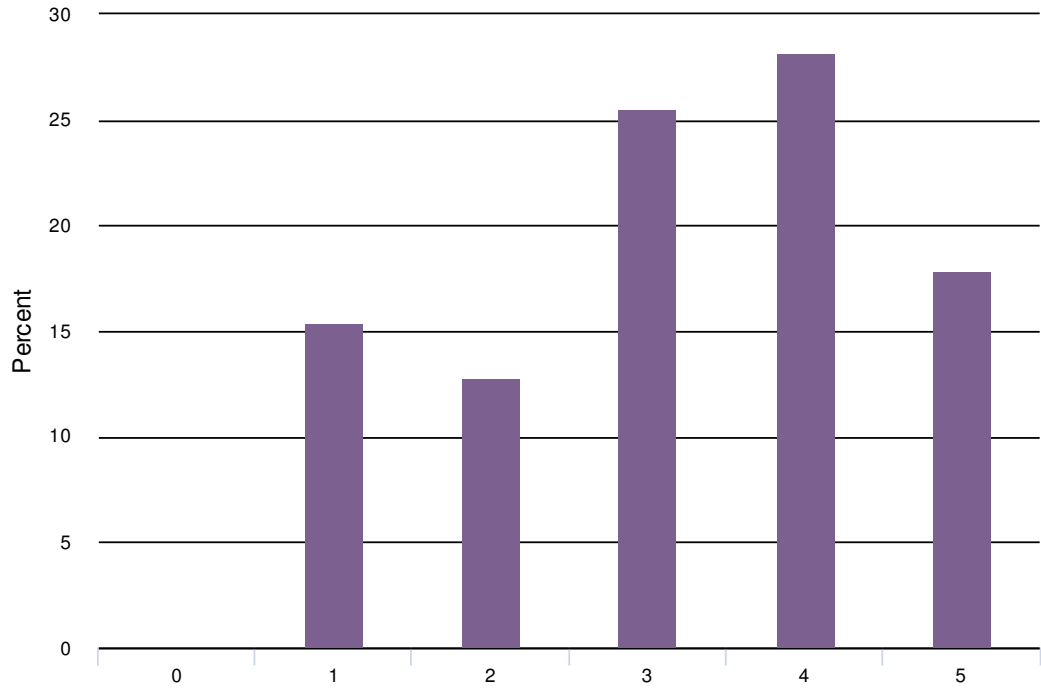
Walking paths



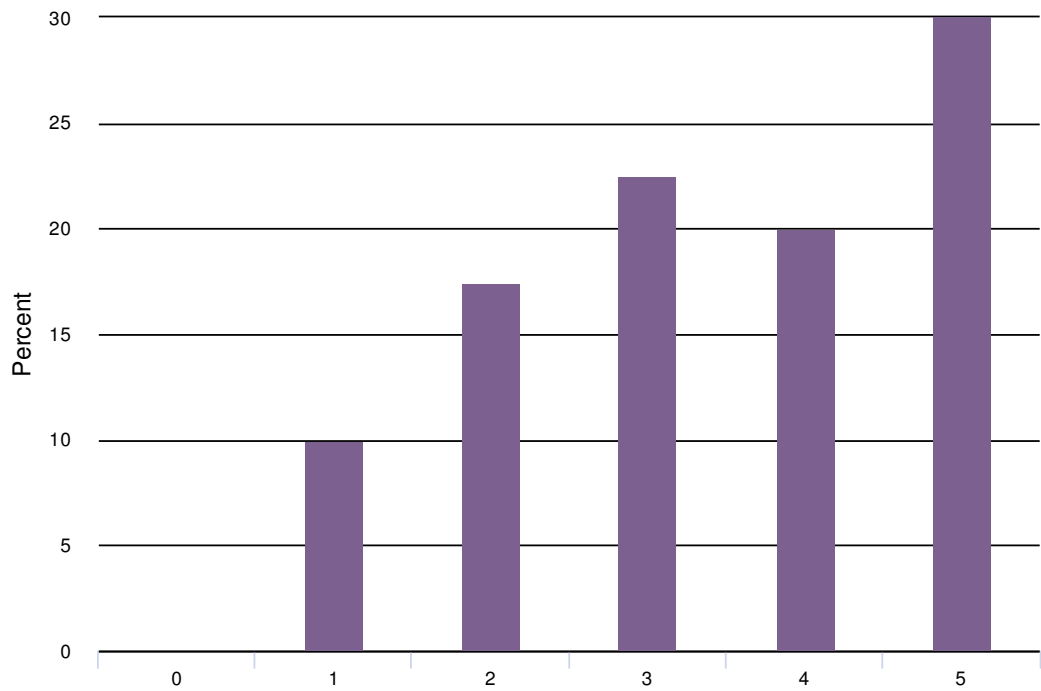
Adult exercise equipment



Place for quiet respite and relaxation



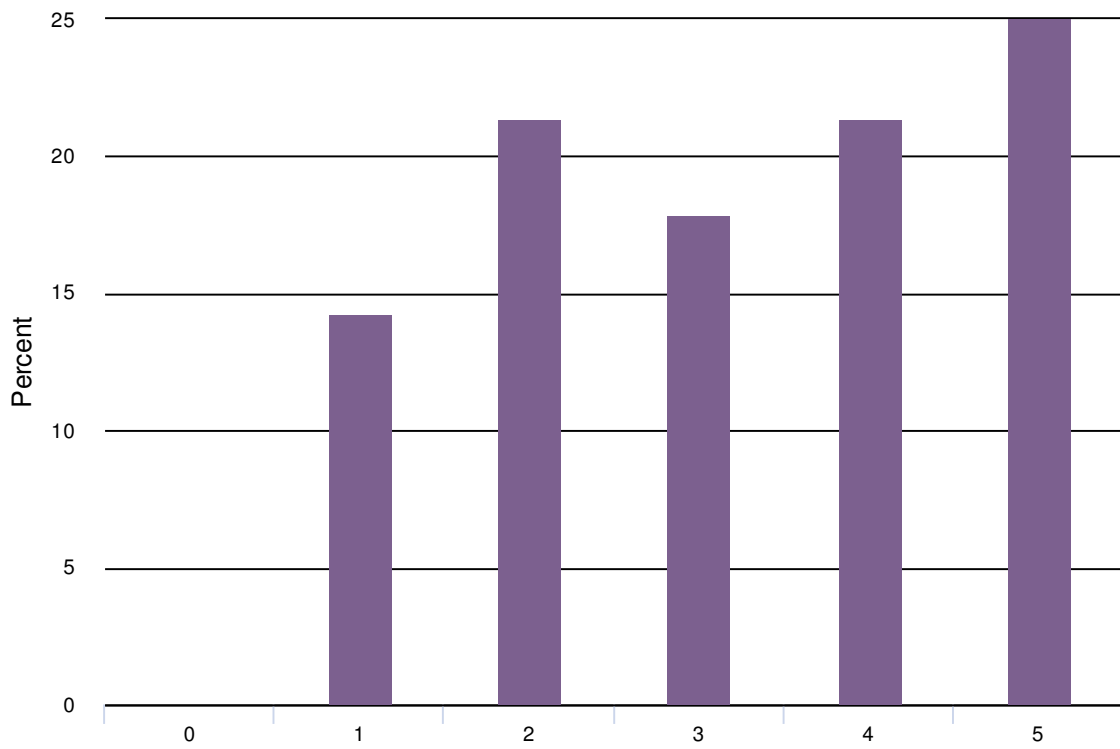
Multi-use Sport Court (basketball, pickle ball, futsal)



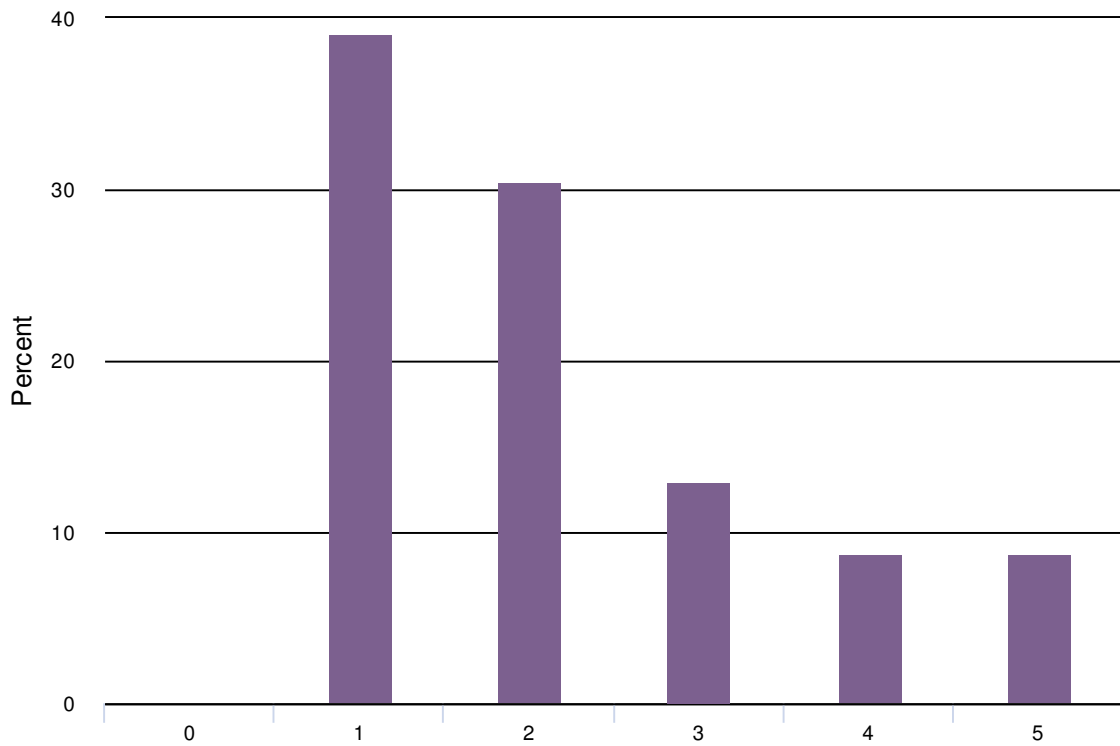
Horseshoe pits

Drinking fountain

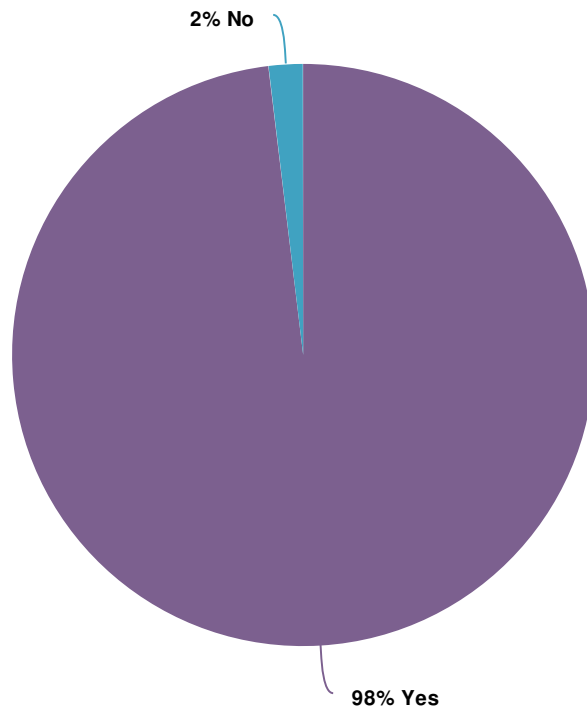
Practice disk golf basket



Skate Dot



3. Do you currently use City of Salem parks?



Value	Percent	Responses
Yes	98.1%	51
No	1.9%	1
		Totals: 52

4. If yes, which parks?



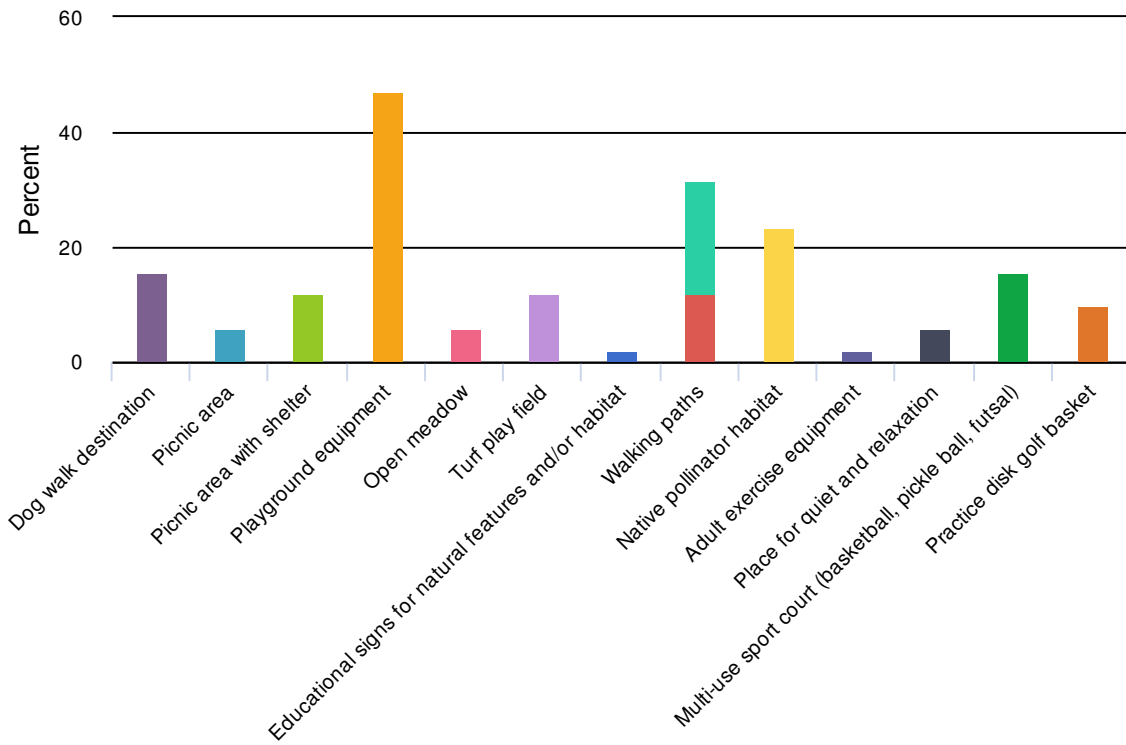
ResponseID	Response
29	Riverfront, Bush Park, Minto, Baxter St
30	Riverfront
31	Riverfront and Minto
32	Multiple
33	Waterfront Park and McCrae Park
35	We've used many of them
36	Orchard heights
37	Wallace Marine Park, Minto Brown Island Park, Orchard Heights Park
38	20 different parks throughout city
39	Riverfront & Wallace Marine & Minto
40	College Heights, Bush Park, Riverfront, Minto Brown
42	Woodmansee Park, Minto-Brown Park, Riverfront Park, Bush Pasture Park, Cascades Gateway Park
43	Wallace Marine, Minto Island, riverfront
44	Wallace Marine

ResponseID	Response
45	waterfront
46	Minto-Brown Island Park, Eagles View, Orchard Heights
47	Bush, Riverfront, Minto
48	Waterfront, Minto, bush
50	Minto Brown, Sunnyslope
51	Bush Park, Riverfront Park, Orchard heights Park, Minto, Lets all Play Place
52	Minto, orchard heights, riverfront, eagles wing
53	Bush, Orchard Heights, waterfront, Salem Hospital playground,
54	Riverfront & Wallace Marine & Minto
56	River front and Wallace
57	Bush park, Battle Creek Park, River Front Park, & Minto Brown Park
58	Cascade Gateway, Woodmansee
59	Bush, Minto, Wallace, Orchard Heights, West Salem
60	Orchard Heights and Riverfront park
63	bush's, riverfront, let's all play,
64	Riverfront, Bush Park, Minto
66	Eagle view
67	orchard heights, college park, riverfront and many more
68	All of them
70	Bush, water front
72	West Salem City Park, Riverfront Park, Bush Park, Morningside Park, Orchard Heights Park, Keizer Rapids Park, etc.
74	Orchard Heights and Riverfront
75	Minto Brown, Bush Pasture, Wallace Marine, River Front



ResponseID	Response
78	Minto, Orchard Heights, Wallace Marine
79	Almost all of them but a lot of times the one out valve which is attached to the new walk bridge
80	Waterfront
82	Eola Ridge, Orchard Heights, Riverfront
83	Orchard heights, riverfront, we'd bennett
85	Riverfront, Minto, Orchard Heights, Wallace Marine, Rosemont Ave
86	Eola, Orchard Heights, Wallace
87	minto brown, waterfront, bush park
88	Eagle Ridge, Bush park
90	Riverfront
91	Orchard Heights
92	Orchard Heights, Eagles View, Bush Park, Minto Brown
94	Riverfront

5. Of the following features for Eagle's View Park, which two are most important to you?





Value		Percent	Responses
Dog walk destination		15.7%	8
Picnic area		5.9%	3
Picnic area with shelter		11.8%	6
Playground equipment		47.1%	24
Open meadow		5.9%	3
Turf play field		11.8%	6
Educational signs for natural features and/or habitat		2.0%	1
Walking paths		31.4%	16
Native pollinator habitat		23.5%	12
Walking paths		11.8%	6
Adult exercise equipment		2.0%	1
Place for quiet and relaxation		5.9%	3
Multi-use sport court (basketball, pickle ball, futsal)		15.7%	8
Practice disk golf basket		9.8%	5

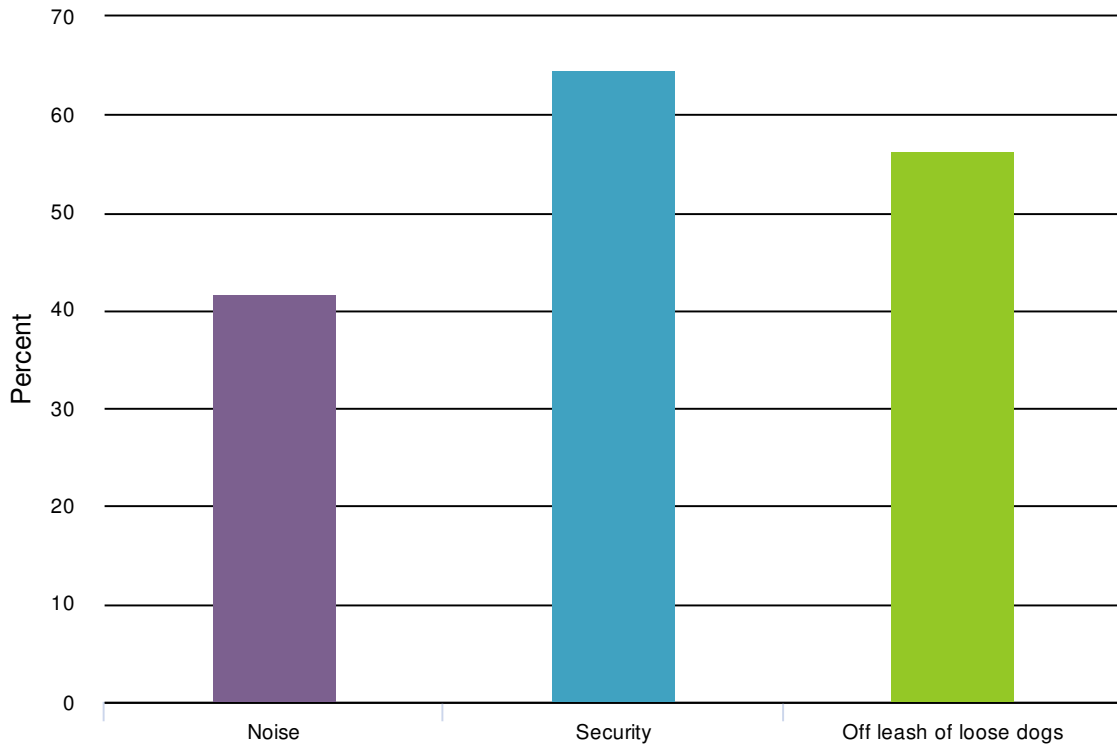
6. What are you most looking forward to at Eagle's View Park? (Please slide your top two choices to the box provided.)




Item	Overall Rank	Rank Distribution	Score	No. of Rankings
Walking/Jogging	1		50	29
Playground destination	2		42	26
Family outings/picnics	3		34	24
Recreating (basketball, pickle ball, or futsal)	4		20	17

Lowest Rank Highest Rank



7. Please select your top two concerns about development of Eagle's View Park.



Value		Percent	Responses
Noise		41.7%	20
Security		64.6%	31
Off leash of loose dogs		56.3%	27

APPENDIX B - Survey Results #2

Online Survey Results

Two online surveys were accessible through a link on the Eagle's View Park web page and in a MailChimp email available to those who signed up to receive email updates.

The second online survey was available following the second open house on January 15 through January 30, 2020. Ninety-three people responded to the survey.

Report for Eagle's View Park Master Plan Survey #2

Response Counts

Completion Rate:

100%

Complete



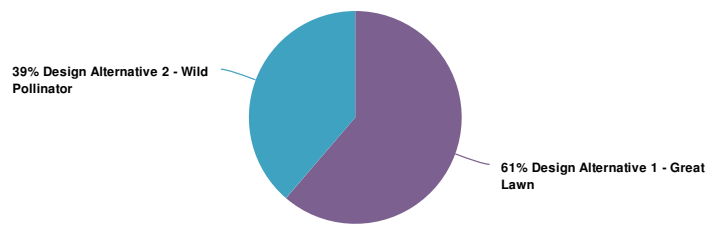
Totals: 93



1. After reviewing the two design alternatives, which design alternative most closely meets your vision for Eagle's View Park?

	Alternative 1 - Open Lawn	Alternative 2 - Wild Pollinator
Open Lawn	0.75 Acres	0.5 Acres
Gathering Area	Separate from Playground; Views of Mt Jefferson	Connected to Playground; best view of Cascades and park entrances
Sport Court	Multi-Use (to be determined)	3-Point Basketball
Playground	Structures, Swings, and Climbers	Scramble Embankment & Slide
Disc Golf	none	3 Practice Putting holes
Fitness Pods	3 Exercise Areas	none
Trees/Planting	Accent Tree Alley	Native Pollinator Pockets



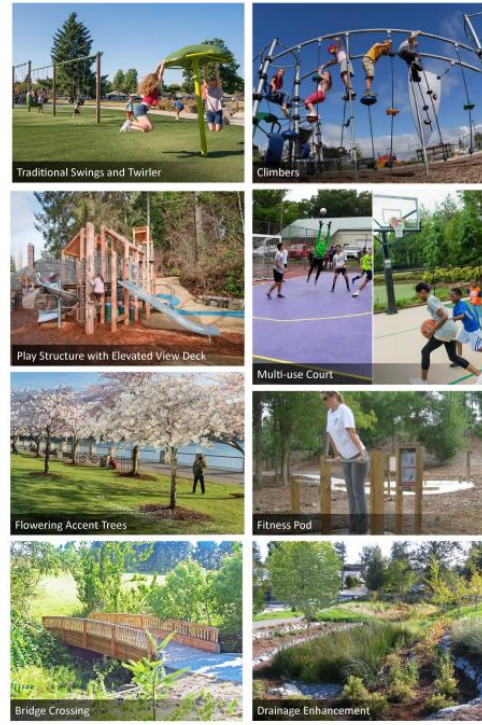


Value	Percent	Responses
Design Alternative 1 - Great Lawn	61.3%	57
Design Alternative 2 - Wild Pollinator	38.7%	36
		Totals: 93

EAGLE'S VIEW PARK MASTER PLAN

2020

2. What do you like about Design Alternative 1: Great Lawn, shown in the graphic below?



Design Alternative 1 | Great Lawn
EAGLE'S VIEW PARK MASTER PLAN

1-19-2020



ResponseID	Response
2	tfdgsdfgsdfgsdfgsdfg
3	I prefer alternative #2
4	Multi use court, playground
5	The trees, drainage, the soft walking paths and a fitness pods.
6	The multi purpose court and fitness pods!
7	flowering trees drainage enhancement multi use court
8	None
9	Accent trees path, multi soft paths, fitness pods, playground, multi sport court location
10	Cherry
11	Nothing! We don't need another homeless camp site!!
12	Multi use court because I love playing basketball and there's a ton of people around here who do too. I think of you put a multi use court in definitely put a basketball court in.
13	Trees, bball, bridges
15	Cherry avenue, large lawn, playground area, multi use court, lots of paths and trees. Cherries or ornamental trees at entrances. Bridge is great.
16	Fitness Pod
17	Play structures, court, flowering trees, climbers, swings, I am indifferent as to the inclusion of fitness pods
18	Lots of areas to hang out or have a picnic
19	I like the game inclusion of the cherry trees.

EAGLE'S VIEW PARK MASTER PLAN

2020

ResponseID	Response
20	Open layout and fun!
21	This city needs more outdoor pickle ball courts
22	Are city needs more pickle ball courts
23	Multi use court because I love playing basketball and there's a ton of people around here who do too. I think of you put a multi use court in definitely put a basketball court in.
24	Drainage enhancement, bridge, flowering trees, multi-use court, play structur, great lawn, walking paths
25	like: fitness pods
26	Tree alley Fitness pods Large open lawn
27	I like the open lawn but please add pickleball specific courts! They are desperately needed in the area and will get tons of use! Thanks!
28	Sport Court, playground, big lawn
29	Open lawn for picnic or soccer play. Instead of a multi-use court it would be preferable to have a court specific to pickle ball. It is such a fun easy sport to learn and is fun for both young, old and everyone in between.
30	playground, multi use courts
31	I like the traditional swings and twister, the bridge crossing and fitness pod
32	All the possible activities for all. The playground has many different play things (slide, swings, climber, twirler), the basketball is always a hit, the open lawn is an amazing picnic area. The fitness pods are also a big plus.
33	i just think we should have a park
35	Overall set up
36	Open lawn area and playground are in the right spots.
37	Tree alley, exercise area, large open field, multi use court, drainage areas, walking trails
38	I'm really feeling the lay out, but I prefer the play ground equipment for #2
39	Walking trails, large open field, multi use court. Cherry blossom trees
40	The fitness pods would be unique and a nice add. I also like preserving the views of Mt Jefferson along with the bridge and other natural features.
41	Fitness pods
42	I like the overall look. It's few to have exercise pods.
43	Large open lawn, larger multi use court, more engaging play structure
44	I like the traditional swings, twirler, climbers and multi use court.
45	Play structure and bridge
46	toys and fitness pad
47	Open spaces
48	More lawn space and the multi use court.
49	Climbing structure, bridge
50	The larger lawn area, if it were level.
51	Play structure
52	All of it! More play structures for the kids and adults have fitness pods they can do while exercising! Beautiful design!
53	Just excited to have another park alternative!
54	Everything!!!
55	Fitness pads
56	All
57	Multi use court, flowering path trees, and the open lawn size.

ResponseID	Response
58	Larger green area, more paths
59	Physical activity, community, and family friendly.
60	Multi use court, playground options, and exercise pod
61	The children's play equipment and flowering trees. Ample open field space.
62	Multi use court, picnic shelter
64	The playground
65	The accent trees along the path
66	Play Structure
67	Playground equipment options, larger lawn space, more path options, landscaping
68	Large open grass, huge playground, trees, large play area Wish this had the disc golf instead of exercise pods. Nobody will use exertpodd
69	I like the trees lining the center path and the playground design.
71	It has a larger Multi-use Court.
72	I like the trees and walking paths.
73	Multi use court
74	Drainage enhancement, fitness pods, paved and soft paths, playground, trees
76	Playground with climbers! Drainage and bridge!!! And all of the paths!
77	Has a greater emphasis on all demographics (playground, while the seating is separate for those without kids), mixed use sport is more versatile, and fitness pods encourage general recreation by all.
78	Nothing
79	Active, usable spaces!
80	The cherry tree alley, the play equipment style, the paths and fitness pods, really just all of it is wonderful!
81	Exercise areas
82	I like the multipurpose use. I would add pollination to the plan
83	More grass area, seperate play area, multi use court
84	The playground
85	Play equipment for kids
86	Swings, slides, twirler, basketball courts
87	I think design 1 would better suit the needs of the community. Pickle ball is very popular for a multi-use court. The playground in 1 is also more of what kids enjoy. I think the larger open lawn allows for more activities for the community as well.
88	Seems to offer more.
89	I like the accent trees along the path, that it has a bigger open lawn area, and a multi use court. The soft paths.
90	Multi use court and fitness pods
91	Swings, climbers, play structure, court, trees
92	Climbers, playground, court, trees
94	Accent trees, multiple viewpoints, nice trail

EAGLE'S VIEW PARK MASTER PLAN

2020

3. Is there anything you dislike about or would prefer to see on Alternative 1: Great Lawn, shown in the graphic below?



Design Alternative 1 | Great Lawn
EAGLE'S VIEW PARK MASTER PLAN



ResponseID Response

2	sfgsdfgsdfg
3	Basketball hoops
4	I think I'd rather have disc golf instead of the workout areas, seems like that would get more usage. That's the biggest difference to me between 1 and 2. And I think I'd prefer the playground to be closer to the picnic area so parents can watch kids more closely.
5	Removing them multi use court and the covered picnic area where people can sleep.
6	Seasonal trees and lack of dog use
7	play structures climbers traditional swings and twirler
8	More disc golf
9	More native plants and pollinator habitats, covered area moved to opposite side of great lawn for views
11	We don't need another homeless camp site!!!
12	No I don't really dislike anything.
13	Traditional play equipment. No embankment slide
15	You could add a row of aster flowers along the south side of the cherry alley, which would give another season of floral interest for both people and pollinators on the path. Asters are low-to-no maintenance perennials that do well planted in the sun. And they bloom in the fall. Then all you would need is some summer blooms in the natural planting areas to make this a great design for the pollinators. Or some wildflowers and milkweed down in the meadow areas. The library has a book entitled "The Plant Lover's Guide to Asters" that shows how beautiful asters are when planted as monocultures. I wish we could add the embankment slide/scramble equipment to this plan. But my 7-year-old likes the playground featured in this plan more. Bottom line: The more playground equipment the better.
16	No
17	Would LOVE a splash pad! Please!
18	No
19	I wish that the pollinator plants and trees were included, as I would like to see things bloom and fade throughout the entire year and not just spring.

EAGLE'S VIEW PARK MASTER PLAN

2020

ResponseID	Response
20	No
21	I would like to see multiple sport courts put in or a Pickleball specific court to put in
22	There is only one multi use sport court and we need a Pickleball specific court to keep up with the demand to play pickle ball with our citizens
23	No I don't really dislike anything.
24	No.
26	Multi use Would like embankment slide
27	Pickleball specific courts! Like they have in Dallas and many other surrounding cities.
28	No
29	It would be nice to have some climbers in addition to slides for kids.
30	would prefer to see addition: lawn seating and additional Picnic /gathering area
31	no Everything looks perfect!
32	More flowering accents.
33	nope
35	Baseball backstop
36	Cherry trees in the middle will block views.
37	Don't like the playground option and location
38	I prefer the playground equipment on #2 more
39	Location of the playground, and don't like the playground design
40	A pollinator garden would be a welcome addition.
41	A circular path around the entire perimeter to walk or run
42	I really wish there could be a splash pad. We need one on our side of the river.
43	Shelter area closer to play equipment
44	I prefer the disk golf option and the playground location on design 2.
45	Splash pad
46	no
47	Pollinator area
49	Open lawn seems not that useful. Fitness pods also.
50	I don't care for the natural seed areas. They end up unkempt - the park on eola is an example of not enough money or resources spent maintaining air building usable lawn. It's a muddy mess.
51	Disc golf
52	None
55	Seating closer to park playground Covered area close to park playground
56	No
57	Add lawn seating facing playground. Add scramble embankment. Add disc golf.
58	No
59	A soft or hard cover over 1-2 playground pieces for year round use.
61	Would love to see bathrooms and a Splash Pad.
62	Would like disc golf also.
64	Frisbee golf

ResponseID	Response
66	Picnic shelter and gathering area too close to houses.
67	Picnic shelter/ gathering area closer to play area.
68	Add a splash pad, get rid of exercise pods, add disc golf
69	It's a great design! I just like the other one better because the playground is further from the road.
71	There shouldn't be any open frisbee golf because there are non-fenced properties. Is there any chance to put a BBQ pit for community "get togethers"?
72	I do not like the location of the covered seating area. It would be better south of the great lawn.
73	Pollination area should be included
74	Open lawn
76	Do people actually use fitness pods?! And we need bathrooms!
77	I think it is beautiful and well thought out.
78	Less development although a small amount of parking and a restroom are needed. Just walkways with open spaces should be the design. To compensate for open space here, add a new large skate park at Bush Park.
79	Pickleball on the multi-use court, disk golf
80	The placement of the picnic shelter area on design 2 is preferable.
82	Add plants for pollination
83	Fitness pod is a waste
84	Gathering area not near playground
85	More for kids
86	Would love to see a splash pad!
87	I think plan 1 is great and ideal. The scramble embankment seems like it would be popular but not worth the trade off in plans. Also the flowering trees are lovely and provide great summer shade as well.
88	No. Nice that after 15 years of being told something was going to be done with this area, that it will be.
89	I would love to see the court marked for pickle ball as well!! There are lots of young families in the area that play it - the fastest growing sport right now. I would like to see the disc golf option here as well. Could lawn seating be incorporated somehow?
90	A second court would be nice
91	No
94	Lawn seating

4. What do you like about Design Alternative 2: Wild Pollinator, as shown in the graphic below?



Design Alternative 2 | Wild Pollinator
EAGLE'S VIEW PARK MASTER PLAN



ResponseID	Response
2	sdfgsdfgdsfg
3	Native plants
4	Disc golf, sport court, and the central location of picnics area/open grass area/playground all near each other. Seems to flow nicely. Playground structures look very fun too!
5	The green space and the drainage flood plain protection. The soft walking path.
6	The plant life! The cherry blossoms won't look good very long
7	pollinator habitat drainage enhancement
8	Disc golf
9	Native plants and pollinator habitats, location of playground and seating area, scramble play,
11	We don't need another homeless camp site!!!
12	Honestly everything I think this is the perfect mix of everything but make sure the basketball court is in away from pretty much everything 🙄
13	Trees, scramble emb and slide log climbers
14	looks nice
15	Embankmentslide and scramble equipment. Swing is fun too. Like the idea of flowers for pollinators.
16	Like it but would want the pods
17	Basket swing, lawn seating
18	Tire swing
19	I like that the main play area is farther away from the homes and that there is a terraced seating area to observe the play area. LIVE the native pollinator focus and improved water treatment area with the bridge.

EAGLE'S VIEW PARK MASTER PLAN

2020

ResponseID	Response
20	Drainage Enhancements is fine in the middle
21	The playground
22	I like the park and
23	Honestly everything I think this is the perfect mix of everything but make sure the basketball court in away from pretty much everything 🤔
24	Pollinator Habitat, bridge, drainaage enhancement
25	like: lawn seating
26	Everything
27	-
28	Disc Golf Baskets Pollinator area Court
30	pollinator habitat, lawn seating, disc golf
31	I like the group basket swing, the bridge crossing and practice disc golf
32	Group basket seat.
33	the whole thing
35	Golf
36	No trees in the middle and no exercise pods. Good flow of paths and use of the area.
37	The climbing wall, slide, stacked seating, mixed trees and pollinating foliage
38	The playground equipment
39	Climbing wall and slide, seating, pollinate trees
40	I like the focus on recreation and active living. I think the pollinator habitat is very important.
41	Pollinator plants
42	I like the playground design
43	Gathering area close to play equipment
44	I love everything about design alternative 2.
45	More natural playground (climber and logs)
46	I love the plants for animals
47	Native plants and disc golf
49	Paths, disc golf, scramble, Log climbing, lawn seating, natural plants.
50	Practice frisbee and cool play area
51	Play toy options, disc golf
52	I don't like it. It doesn't have the active fitness "feel" of it. It just shows the scenery but not the fun active part of it. Going to the park should be a family fun adventure with a lot of fun things to do there!
53	Love it all
54	Playground, log climbers
55	Picnic shelter close to feild and playground great for gatherings and parties.disc golf area. Seating on lawn and slide area.
56	Scramble embankment and slide outdoor seating
57	Lawn seating facing playground. Scramble embankment. Disc golf.
58	I like the pollinator park but not the layout
59	Nothing
60	Everything but disk golf (just not my thing)



ResponseID	Response
61	The Children's Play equipment, especially the more natural looking structures (log climber and scramble embankment), and the Pollinator Habitat with native plants.
62	Fisc gold
63	Scramble and slide
64	The combo between childrens play area and adult activities
65	Disc golf course
66	Basketball court, practice disc golf, and pollinator habitat.
67	Playground and picnicking area close together.
68	I love the basket swing,log climbers, scramble w slide,disc golf & love the lawn seating!
69	I like the added disk golf section, the natural elements to the playground, and the greater distance from the playground to the street.
71	No opinion, not sure about this.
72	I like the location of the playground and seating area.
73	Frisbee golf
74	Drainage enhancement, pollinator habitat with native plants, scramble embankment and slide, lawn seating, disc golf practice, paved and soft paths
76	Embankment and slide area!!! Bridge, paths!
77	Frisbee golf is uncommon and it's a thoughtful addition for a low-noise activity.
78	Nothing but I was forced to choose an alternate to move through the survey.
79	Disc golf
80	The placement of the picnic shelter.
81	No exercise areas
82	Focus on pollination.
83	Disc golf, lawn seating.
85	Scramble wall
86	Slide and swings
87	Not enough pretty trees. Also disc golf isnt as popular as pickleball.
88	Lawn seating
89	The bottom half - below the path that basically crosses the entire area. I also really like the lawn seating option.
90	Disc golf
91	Swing, scramble embankment, log climbers, lawn seating
92	Drainage, Scramble, seating,
94	Pollinator gardens, disc golf, landscape enhancements

EAGLE'S VIEW PARK MASTER PLAN

2020

5. Is there anything you dislike about or would prefer to see on Alternative 2: Wild Pollinator, shown in the graphic below?



Design Alternative 2 | Wild Pollinator
EAGLE'S VIEW PARK MASTER PLAN



ResponseID	Response
2	sdfhgsdfgsdfg
3	Group basket swing
4	No, I love it!
5	The basketball court the covered area where people can sleep.
6	Lack of multi use court and fitness pods and lack of dog use
7	lawn seating log climbers basket swing
8	Everything is good, maybe restrooms
9	Disc golf, pathway layout
11	We don't need another homeless camp site!!!
12	No I think all of it is great
13	No disc golf please. Windows will be broken
14	no
15	No cherry alley. Not a lover of disc golf, prefer more paths.
16	Like it but would like the pods
17	Disc golf seems to really only be utilized by a niche group of young adults, and the equipment has only one use and takes up a lot of space. Other multipurpose alternatives may be a better option
18	Skatepark
19	Live the entire design of option 2!

EAGLE'S VIEW PARK MASTER PLAN

2020

ResponseID	Response
20	Need more trees or a bushes that cover outer sides
21	No, just a pickle ball court Instead of basketball hoops. Every house in that neighborhood has a basketball hoop sitting on the street. We don't need more of these
22	We definitely do not need more basketball hoops. Pickleball courts will serve more people.
23	No I think all of it is great
24	Dislike disc golf, log climbers, lawn sitting, scramble and slide, group basket swing
26	Would like to have the tree alley from plan 1
27	Pickleball specific courts.
28	No
29	I don't think a fitness pod would ever be used. I've see. The ones at Orchard heights and haven't seen any use and they're covered in moss and slippery green matter. Frisbee golf is usually played at a full course and I highly doubt this would ever be used. With Eagle's being a new development there a many young children and with families. Being able to burn toddler energy would be welcome indeed.
30	prefer to see additional Picnic /gathering area
31	I don't think many people would use the log climbers
32	A play structure, swings, slides, climber, fitness pods & basketball court. Also flowering trees.
33	no
35	No
36	Make sure the trees are low growing height so that the views are not blocked. Keep trails away from fences.
37	Disc golf area, basketball court, walking trail too close to housing on south side of park, small open field
38	N/a
39	Disc golf, small open field Only one bridge
40	The recreation sites take up a lot of space at the expense of other benefits. There are also plenty of disc golf courses and we don't necessarily need another.
41	Worried about too many bees near the gathering areas
42	It would be great to have a multi- use court. And it could use a splash pad. It's sad that the one we have on our side of the river is awful. We need something for our kids that really enjoy and feel safe while cooking down on a hot day.
43	Do not see disk golf as attractive to enough of the masses
44	The court was better on design alternative 1.
45	Water feature or splash pad
46	Just don't think it will attract the young families that live around there
47	Off leash area for pets.
49	I do like the cherry trees from Option 1. I would like an off leash area for dogs.
50	No wild seed areas. These are unkept and not usable areas by park goers.
51	No exercise pads
52	More active play structures. Basketball court could be moved to Alternative 1?
54	Disc golf
55	Another covered picnic area BATHROOMS
56	Disc golf, group swing
57	Don't add to high pollen count for allergy sufferers. Add multi use court instead of basketball only court. Add spring flowering trees along street and paths.
58	Don't like the golf, would want more paths
59	The lack of entertainment for kids
60	Disk golf, never saw anyone using the temporary one the times I was out walking the neighborhood (I realize that doesn't mean it was never used)

ResponseID Response

ResponseID	Response
61	Bathrooms and a Splash Pad.
62	Prefer multitude court over basketball court.
64	Basketball court or tennis court added
65	More flowering a cent treed
66	I don't like the playground. I prefer the one shown in Design Alternative 2.
67	More walking paths
68	Splash pad & more playground
69	I really loved the play structure from the first design, though I realize it doesn't flow as well.
71	No opinion.
72	I wish the middle path connected closer to where the kids bus stop is located, the middle street light on Eagles Wing St. The kids often run across from there.
74	-
76	Disc golf
77	I do not favor basketball courts from a noise standpoint.
78	Open countryside with walking paths is the best way use although a small amount of parking and a restroom should be added. Should consider adding a large skate park at Bush as part of this process to compensate for any open space here.
81	Exercise areas
82	Multi use areas
83	Pollinator area. Will be thistle patch in 5 years
85	Dislike frisbee golf, feel they will be unused
86	I don't necessarily think we need another west Salem pen that is just nature- we have those! Our kids need more access to exercise and play places with toys and structures.
87	basket swing is nice but plan 1 is better.
88	I don't know
89	A multi use court instead of a 3 pt basketball court.
90	Could the court be multi use?
94	It needs more trees and an Additional picnic or gathering area higher up the hill

APPENDIX C - Cost Estimate

Eagle's View Park Master Plan
 Estimate of Probable Cost
 Environmental Science Associates

Estimate Date:03/05/2020

	<i>ITEM</i>	<i>QTY.</i>	<i>UNIT</i>	<i>UNIT COST</i>	<i>EXT. COST</i>
1.0	SITE CLEARING			Subtotal	\$ 13,500
1.1	Erosion Control Fence and Bio Bags	1	LS	\$ 3,500	\$ 3,500
1.2	Clearing and Grubbing	100,000	SF	\$ 0.10	\$ 10,000
2.0	EARTHWORK			Subtotal	\$ 52,111
2.1	Topsoil at Lawn	306	CY	\$ 20	\$ 6,111
2.2	Topsoil at Planting Areas	926	CY	\$ 20	\$ 18,519
2.3	Soil Amendments at Seed Areas	474	CY	\$ 20	\$ 9,481
2.4	Finish Grading	180,000	pl	\$ 0.10	\$ 18,000
3.0	UTILITIES			Subtotal	\$ 22,000
3.1	Water Connection and Distribution	1	LS	\$ 10,000	\$ 10,000
3.2	Electrical Connection and Distribution	1	LS	\$ 2,000	\$ 2,000
3.3	Drainage Pipe and Field Inlets	1	LS	\$ 10,000	\$ 10,000
4.0	PAVING & WALLS			Subtotal	\$ 192,000
4.1	Paths - CIP Concrete	7,500	SF	\$ 12	\$ 90,000
4.2	Paths - CIP Concrete Vehicular	9,000	SF	\$ 10	\$ 90,000
4.3	Picnic Plaza - CIP Concrete	900	SF	\$ 12	\$ 10,800
4.4	Paths - Soft Surface	400	SF	\$ 3.00	\$ 1,200
5.0	PLAYGROUND EQUIPMENT			Subtotal	\$ 90,300
5.1	Play Equipment	1	LS	\$ 62,500	\$ 62,500
5.6	Play Freight	1	LS	\$ 2,000	\$ 2,000
5.7	Play Install	1	LS	\$ 25,800	\$ 25,800
6.0	PLAYGROUND SURFACING			Subtotal	\$ 40,026
6.1	Play Surfacing	236	CY	\$ 35	\$ 8,270
6.2	CIP Concrete Curb	400	LF	\$ 32	\$ 12,800
6.3	ADA Ramp	2	EA	\$ 1,500	\$ 3,000
6.4	Boulders at Embankment	30	TON	\$ 180	\$ 5,400
6.5	Drain Rock Base	93	CY	\$ 60	\$ 5,556
6.6	Geotextile Fabric	10,000	SF	\$ 0.50	\$ 5,000
7.0	SITE IMPROVEMENTS			Subtotal	\$ 161,296
7.1	Picnic Shelter	1	LS	\$ 45,000	\$ 45,000
7.2	Bridge	1	LS	\$ 35,000	\$ 35,000

EAGLE'S VIEW PARK MASTER PLAN

2020

7.3	Sports Court - CIP Concrete	4,100	SF	\$	12	\$	49,200
7.4	Basketball hoop	1	EA	\$	1,500	\$	1,500
7.5	Benches	4	EA	\$	1,500	\$	6,000
7.6	Picnic Tables	5	EA	\$	1,800	\$	9,000
7.7	Fitness - Equipment	2	EA	\$	2,500	\$	5,000
7.8	Fitness - Surfacing	14	CY	\$	35	\$	496
7.9	Disc Golf Baskets	3	EA	\$	500	\$	1,500
7.10	Trash Receptacles	3	EA	\$	400	\$	1,200
7.11	Bike Racks	1	EA	\$	500	\$	500
7.12	Drinking Fountain	1	EA	\$	4,500	\$	4,500
7.13	Park Signs	3	EA	\$	800	\$	2,400
8.0	IRRIGATION				Subtotal	\$	31,030
8.1	Irrigated Lawn	28,000	SF	\$	1	\$	21,000
8.2	Irrigated Planting Areas	30	SF	\$	1	\$	30
8.3	Irrigation Controller	1	LS	\$	10,000	\$	10,000
9.0	PLANTING				Subtotal	\$	128,389
9.1	Trees - Deciduous	10	EA	\$	300	\$	3,000
9.2	Trees - Small Accent	30	EA	\$	250	\$	7,500
9.3	Trees - Street Trees	11	EA	\$	250	\$	2,750
9.4	Planting - Shrubs & Groundcover	50,000	SF	\$	2.00	\$	100,000
9.5	Seed at Lawn	25,000	SF	\$	0.10	\$	2,500
9.6	Seed at Rough Lawn / Pollinator	80,000	SF	\$	0.10	\$	8,000
9.7	Bark Mulch	309	CY	\$	15	\$	4,639
10.0	SOIL PREPARATION				Subtotal	\$	11,250
10.1	Soil Preparation at Lawn Area	25,000	SF	\$	0.15	\$	3,750
10.2	Soil Preparation at Planting Areas	50,000	SF	\$	0.15	\$	7,500
Total						\$	741,902
Additional Cost Factors:							
<u>Design</u>							
	Environmental/Archaeological clearance		2.0%		\$		14,838
	Consultant		12.0%		\$		89,028
	City: Consultant management		2.5%		\$		18,548
	Parks oversight		1.0%		\$		7,419
Design Subtotal						\$	129,833
<u>Construction Management</u>							
	City		10.0%		\$		74,190
	Consultant		2.0%		\$		14,838
	Parks		1.0%		\$		7,419
Construction Management Subtotal						\$	96,447
Grand Total						\$	968,182
30% Contingency						\$	290,455
Total Construction Cost						\$	1,258,637

051820 West Salem Neighborhood Association Meeting Minutes

Monday, May 18, 2020 7:00 PM

Attendees: Kevin Chambers, Mark Coutis, Tammy Goad and 19 attendees via Zoom meeting.

Meeting called to order by Kevin Chambers at 7:00 pm by Kevin Chambers.

AGENDA

Introductions

Additions to agenda from the body - none

Approval of minutes from 2/17/20 Meeting - tabled until next in person meeting

PRESENTATIONS

Toni Whittler, Parks Planner, City of Salem - Eagle's View Park Master Plan - VOTE

See attached presentation slides for details.

Collaborative effort between Eagle's View neighbors, City of Salem, and external consultants. An online survey was also conducted.

This will be a neighborhood park - serves 1/2 mile service area (see map in presentation slides below)

Residents were notified of 3 planning workshops via postcards, along with info to sign up for email updates and URL links to planning process

Park land area has a number of slopes which present some design constraints

Red/pinkish areas on map are the steepest slopes and preclude development - but these can be overcome

Drainage way in middle of park draws storm water from neighborhood to the West - during heavy rain events water flow is pretty high. Currently covered with Blackberry thicket.

Yellow circles are streetlights

Entryways on W and NW corners

3 steps for adoption process - WSNA, City of Salem and City Council adoption of draft master plan developed through 3 workshops noted above.

Plan encompasses both passive and active recreation

Fitness pod is small piece of basic equipment with minimal moving pieces - chin up bar, parallel bar, etc. to encourage an exercise route around the park

Steve Anderson requested for an information kiosk as a place to post information about community events

Also drinking fountains will have spigot for dogs as well

Discussion of parking availability. AS a neighborhood park it is expected residents would walk or bike to park.

Parking provided along the side of the park and off Eola drive- residents did not want parking in front of their homes.

Mark Coutis Motion to endorse plan - Keith seconded. Majority approved.

VOTE: Approved via "thumbs up" reaction votes via Zoom

Carol Houk, Salem Dept of Transportation - Wallace Road Project

Presented Michigan City Lane at Edgewater Street (aka Wallace Road Project)

Pavement and safety improvement project

Pavement condition rated low to poor and sidewalks need to be upgraded to comply with ADA standards

Installing rapid flashing beacons at 5 intersections; adding beepers for sight impaired

Adding 172 ADA compliant curb ramps

See presentation for detailed location of push buttons, audibles, etc.

Funding coming from various dept. Fix It region 2 budgets - \$9.9 million

Final plans should be done by end of 7/2020

Go to bid by 11/5/20

Construction scheduled to start in December 2020 and continue through 7/2022 (actual construction probably will not start until first part of 2021)

There will be temp pedestrian access routes during construction - some will be marked or signalized

At this time, no full road closures are planned (at least one lane open during construction). No lane closures on weekends or during rush hour traffic.

There will be multiple single lane closures

Truck freight motility will be maintained through the project, but large loads will need to provide advanced notice and could experience up to a 20 minute delay

Repaving will be done at night.

Nick asked questions about signaling. Asked about Bluetooth connectors and flashing left signal light programming. Carol advised she authorized design team to implement left turn detectors. She will get answers to Nick's questions and send to Tammy once she gets answers from the design team.

Another question asked about location of equipment staging when not in use - Carol advised for most of the projects this is up to the contractor. Contractor will likely scope out area to determine best location for this. City has to grant permission and anyone owning the staging area will be contacted as well.

Marc asked about Orchard Heights and Wallace Road - impact of new crosswalks to property area - Carol will review plans and let us know. Marc would like to see a proposed plan before a completed plan so he has an opportunity to provide feedback

Residents can visit odot.gov and select link to projects in your area - enter project # and you can receive more information about a project...Carol will send the instructions to Tammy for inclusion in minutes.

Jim asked for more detail on crossing at 2nd and Wallace. There is a lot of contention about this site - City does not want a crossing installed there. There have to be routes for pedestrians due to ADA - only options were too far away. Also looked at one a couple of blocks north. Because 2nd street is on a hump, it blocks sight of traffic coming around curve off bridge. There will be a temporary crossing in this area only during construction.

Jim also asked about crossing at Orchard View and Wallace.

REPORTS

Salem Police - Not Present

City Councilors

Jim advised the improvements for Wallace Road will be starting in July, and this will affect congestion for the 1 1/2 years of construction - please be patient

There is work starting to improve sidewalks on Orchard Heights

Still cannot have public testimony at the virtual council meetings - please send questions in advance - next meetings are 5/26, 6/8 and 6/22.

Just finished budget committee process for period 7/2020 - 6/30/2021. Two meetings conducted and budget passed in two sessions in near unanimous votes.

There are additional expenses continuing into next year to accommodate growth. If income is not there, the expenses will not be incurred.

Jim advocates for virtual meetings to continue communication!

Attendee asked about funding for homeless. There are hopes there will be some federal funding - emergency declaration to allow camping in Wallace Marine park will continue for now.

Paula asked about county court judge ruling that Gov Browns order should have been voted on by Legislature within 28 days of the order. Jim believes supreme court will overrule the ruling - but for now, the order is null and void until supreme court reinstates it.

Mark communicated that spotlight at Orchard Heights is too far back and poses a safety risk. Planning to visit City rep for promised answer soon...Mark believes all that is needed is for some trees to be cut back.

Land Use - Steve Anderson

Posted two reports from City on Facebook. 1. 33 single family development on Doaks/OH and offstreet parking expansion for NW Human services. Residents can visit City of Salem web page, access West Salem neighborhood link and you can see all pending development projects.

Thanks to Clint for his work on Marine Drive.

Steve will provide links to projects for neighbors to comment.

Homeless Committee - Fay DeMeyer is new chair!

Fay shared info/vision on HopeCrest. Providing solutions for homeless, not just food and place to sleep. Also to provide wet and dry shelter to help both those who want help and those who don't. Has classrooms, swimming pools. 2700+ square feet - indoor and outdoor camping space. Also has restroom facilities.

Can provide food, education, treatment, etc.

While we have laws against loitering and public urination/defecation, we don't have a way to enforce those laws. Hopecrest would provide a legal place for even those who don't want help to stay, camp and clean up.

Need to repurpose budget from agencies not providing useful solutions or non-working programs (Navigation Centers?) to real solutions. Need to support people to improve their lives - no more enabling. Need to lead people to productivity. Fay will send Tammy email info and we will set up some meetings to send message that our parks should not be used for homeless camping, per the Association vote. Goal of Homeless Committee is to pursue any idea/options to address and solve the challenges posed by the homeless population - HopeCrest is one option. Totally open for how we achieve solution. Kevin will be forwarding names of interested neighbors to Fay as soon as he has a moment.

Parks - Micki Varney

Received 5th grant for David Chandler nature park.
Thanks to Nick for being on Salem Parks advisory board meeting - brought up issue on pedestrian road crossing at Orchard Heights park. Still haven't heard anything back from City on this yet.

Traffic and Infrastructure Transit - Nick Fortey

Nick asked City to perform some maintenance at Wallace Road/Glen Creek and asking City to mow the median near Eagles View Park.
As Micki said, Nick spoke about the pedestrian access to Orchard Heights park; asked City to look at access to parks in general
Nick brought up issue about Stop Bar at OH/Wallace with City
Sent comments back to MPO about transportation improvement program. One project at Doaks Ferry/Hwy 22 interchange - need to add lighting. Also talked about OH parks crossing. And finally requested doing some things for walking/biking optimization to help with traffic

West Salem Business Association - Not Present

Edgewater - Steve Anderson

Market started on Thursdays - talked with Mayor's office, trying to get him down for coffee sometime in June
This Thursday a rep from Glen Gibson Watershed Council - come by for some seeds, bring the kids!
Next meeting a week from Thursday to talk about reopening walking cruises

Glen-Gibson Watershed - EM Easterly

See attached newsletter for upcoming/ongoing events

Chair Announcements - Kevin Chambers

Board approved printing expenses for Tammy and also agreed to spend what was needed for communication (aka Zoom account) for meetings
Kevin planning to have executive meetings every 2 months

Vice Chair Announcements - Mark Coutix

Need to identify who is in charge of school crossing lights and have them turned off
Bridge Committee Update - none

State Representative Report - Not Present

State Senator Report - Not Present

Old Business - None

New Business

Might be beneficial to move to 2 WSNA meetings per month to allow more time for presenting and Q&A

Meeting adjourned at 8:35 pm

Links for more information:

WSNA - <http://www.cityofsalem.net/Pages/west-salem-neighborhood-association.aspx>

Land Use (chair: Steve Anderson) - <https://www.facebook.com/groups/1920123584965094/>



0520EagleView

June 5, 2020

To Mayor and City Council:

The Salem Parks and Recreation Advisory Board is pleased to support the expansion of the Park Ranger's duties and service area to better serve the Community's needs.

The Park Ranger currently only provides service to 4 of the 92 parks in the City of Salem and is limited to enforcing simple code violations. This proposal will allow the Ranger to service other parks as needed, increase public awareness of the Park Ranger's activities, and more efficiently respond to violations and complaints, thereby creating a safer park system for all users. The expanded duties will allow the Ranger to enforce the additional *Salem Revised Code* Chapters 47, 50, and 102.

We believe these expanded duties are in the best interest of the park system. While the Park Ranger's focus will remain on Minto Brown, Riverfront, Wallace Marine, and Marion Square Parks, this expansion will provide flexibility to support the many other great parks throughout the City. We recognize that this expanded role will create additional responsibilities for the Park Ranger. However, the primary focus should remain on existing responsibilities and public outreach/education with these expanded duties augmenting current work as time allows.

Thank you for your consideration of this opportunity.

Sincerely,

Dylan McDowell, Chair
Parks and Recreation Advisory Board

Information Reports Packet
SPRAB Meeting for June 11, 2020

1. Mission Street Parks Conservancy Report
2. Parks and Natural Resources Planning Report
3. Parks Operations Report
4. Recreation Services Report
5. Special Report on Unsheltered Persons Camping in Parks



MISSION STREET PARKS
CONSERVANCY

TO: SPRAB

FROM: Mission Street Parks Conservancy

DATE: June 2, 2020

RE: MSPC Report on Activities for the Period January 1, 2020, to May 30, 2020

The Mission Street Parks Conservancy is a 501(c)(3) organization dedicated to preserving, maintaining, enhancing, and interpreting Bush’s Pasture Park and other iconic landscapes on and near Mission Street.

Preserve

The Conservancy and the City are working together to rehabilitate the Mae Tarter Old Rose Collection. The work includes filling in some of the rose beds with period-appropriate roses and purchasing and installing new plant labels. The project also includes: restoring the brickwork around the sundial, purchasing a new sundial, moving an existing bench, and adding a new bench. See the attached RFP for description of the brick and bench work. MSPC is working to raise funds and will release the RFP when we have more dedicated funds and in consultation with the City. (Clearly, the dates on the RFP will change before we release it.)

In July 2019, MSPC provided the City with a report on the health of the park’s Oregon white oaks. We have not heard from the City whether they intend to adopt any of the report’s recommendations, but we understand (and we observe) that the City has adopted some changes that are consistent with report’s recommendations.

Maintain

MSPC’s Tuesday Gardeners have persevered through the COVID-19 pandemic with their work caring for the gardens and beds in our agreed-upon area and in compliance with social distancing rules. Maintenance work has included: weeding, edging, removing bulb foliage, removing annuals, and some pruning. Volunteers also care for the plants in the greenhouse.

We added a few perennials and shrubs to the existing beds, including: *Osmanthus delavayii*, *Paeonia mlokosewitschii* (known more commonly as *Paeonia* ‘Molly the Witch’), *Viburnum trilobum* ‘Bailey Compact,’ and *Rhododendron* x ‘Pink Snowflake.’

Finally, Tuesday Gardeners have maintained the whitewash on the greenhouse as needed.

Enhance

The Conservancy's only active enhancement project is the installation of a late summer pollinator garden. This garden will be a "hot garden" full of colorful late summer perennial flowers in what had been a somewhat neglected flower bed in the South greenhouse garden.

Other proposed enhancement projects are waiting the completion of the Cultural Landscape Plan and City review.

Interpret

The Conservancy received a grant of \$1,100 from the Marion Cultural Development Corporation for the purchase and installation of landscape bed labels. To date, MSPC has purchased labels for each of the landscape beds in the park's northwest corner. The label includes the bed's name, its number, and a bar code that will launch a web page describing the bed's plant material. A volunteer has built and painted the posts. Salem parks staff tells us they will install the posts in the beds beginning the week of June 8, and MSPC volunteers will follow along and install the labels on the posts.

Additionally, MSPC just received an award of \$2,800 from the Oregon Parks Foundation Fund of the Oregon Community Foundation. The award will fund a survey of the location and shape of the park's landscape beds. This information will be loaded in a GIS map of the park, which will then allow us to produce more informative maps for park-goers and park managers. MSPC will provide the City with a copy of the data.

Plant sale

Because of the COVID-19 pandemic, we cancelled our spring plant sale, which is normally a significant fundraising event for MSPC. We have been engaged in other fundraising and our financial position is stable. We are well aware that MSPC is only one of many local nonprofit and for-profit businesses affected by the pandemic, so we are very grateful that we expect to weather this difficult time.

INVITATION TO BID

Subj.: Historic Bush's Pasture Park (Municipal Rose Garden)

OWNER: Mission Street Parks Conservancy
600 Mission ST SE
Salem, Oregon 97301

OWNER's AGENT: Michael Slater, Project coordinator
202-425-5493
michael.k.slater@gmail.com

Site Address: 600 Mission St, Salem OR 97302

Bid Invitations: OPEN BID

Date: Monday, 6th August, 2018

Bids Due: Friday, 21 September, 2018, end of business, via email to
michael.k.slater@gmail.com

Scope of Work

Construct/replace brick pads for 3 park benches and remove and replace (in-kind) circular brick sundial focal point of the Mae Tarter Old Rose Collection in the Municipal Rose Garden. Project is in a Historic Cultural Landscape Garden

Introduction & Landscape Context:

Bush's Pasture Park is one of Salem's iconic parks and is located in a historic district. Its 90.5 acres include The Municipal Rose Garden, a historic house and conservatory, mixed flowerbeds, an ornamental tree and deciduous azalea collection, two native oak groves, a riparian zone, several playgrounds, and picnic areas. It attracts a diverse cross-section of the City's population and is popular with tourists. The park and all its assets are owned and maintained by the City of Salem. It also receives support from the Mission Street Parks Conservancy (MSPC), which exists to help the City preserve, maintain, enhance, and interpret the parks on and near Mission Street.

The Municipal Rose Garden consists of three parts: a Lord and Schryver-designed section that contains the Mae Tarter Old Rose Collection, Sally Bush's Roses original to the Bush farmstead, and a hybrid tea and floribunda rose collection. The City and Conservancy recently rehabilitated the hybrid tea and floribunda collection by raising the planting beds with a mixture of topsoil and compost, and planting

650 new rose cultivars. Now, the city and MSPC are turning their attention to the rehabilitation of the Lord & Scryver-designed portion of the rose garden.

* * *

PROJECT DESCRIPTION:

The City and MSPC want to rehabilitate the historic brickwork that encircles and defines the focal point of the Old Rose Collection by removing the existing bricks, installing a concrete base, then reinstalling the bricks in the exact pattern in which they were originally installed. The Contractor's responsibility includes documenting the existing installation with sufficient detail to recreate the pattern, removing the existing bricks, determining which bricks may be used and which should be discarded, installing the concrete pad and reinstalling the brickwork. The City will provide bricks to replace any removed bricks that are too damaged or too worn to be reused. Wherever possible, the awarded Contractor shall engage best practices for the treatment of the historic landscaping, as outlined in "Guidelines for the Treatment of Cultural Landscapes" as per the Secretary of the Interior's Standards for the Treatment of Historic Properties at: <http://www.nps.gov/tps/standards/four-treatments/landscape-guidelines/index.htm>, utilizing the utmost care to protect and preserve all extant plant material, carpentry, landscape, turf, and irrigation elements in the rose garden. Wherever possible, careful hand/manual labor is the preferred method of construction.

IMPORTANT NOTES:

This site is a historic cultural landscape garden. Some of the plants contained in the garden are considered heritage and are rarely available for purchase in the current nursery trade, and cannot be replaced if damaged. Therefore, every effort shall be made by the installing contractor, to preserve and protect all existing plants at all times.

This site is a public place. It is maintained by volunteers and City employees. Therefore, every effort shall be made by the installing contractor to coordinate all onsite activities with the OWNER's Agent.

There is to be no smoking onsite at any time.

The use of gas-powered equipment is discouraged on the site. (See comments on trenching, below.)

Contractor may provide bathroom unit in designated location approved by OWNER's Agent prior to construction, OR they may use the public restroom located in the Bush Barn.

The limited site parking is open to the public. The Contractor needs to be aware of events and courteous to patrons of the park and not take up more spaces than necessary especially when loading and unloading of materials/equipment. Driving and/or parking vehicles off pavement is discouraged, and will only be allowed with approval from OWNER's Agent. All materials are to be stored or staged offsite unless space is given or approved by the Park staff during construction.

All Masonry to be preserved OR saved must be kept in the same area from which it was removed. Numbering or marking bricks is encouraged to safeguard the historic continuity as much as possible.

Contractor shall at all times maintain an orderly and clean jobsite, and is responsible for all erosion control during the course of the work, regardless of weather conditions. At the end of each work day, Contractor shall sweep effected hardscape areas, neatly stack construction supplies, cover, mark and tape off all open trenches with brightly colored safety tape and signage to protect the public or visitors to the garden during construction.

Sundial/ Bench Project: Contractor shall,

Remove/replace and install all new and salvaged masonry to current industry standards. Provide & install all areas with proper compacted base material. Project estimate must include proper removal of existing brick, cleaning and care of salvaged brick, sand, mortar, concrete, reinforcement, equipment, mobilization, hand labor, and LCP (Licensed Construction Professional in Oregon) supervision, as well as the following components:

SEE (EXHIBITS 1-8) for existing site plan and images

The Job Captain or Supervisor must schedule the project instillation in consultation with the parks supervisor. The parks supervisor must agree in writing to any proposed changes in the instillation schedule. The site supervisor can facilitate special needs, such as material storage, access to water, power, etc.

Parks Supervisor: Jake Snell, City of Salem
Site Supervisor: Tom Beatty, City of Salem
Project Manager: Gretchen Carnaby, MSPC

Field verify all measurements prior to start. Brick must be laid in exact orientation and pattern as it is removed.

Additional drawings can be provided if needed.

Carefully Remove, clean and preserve all edging, pathway/bench pad brick in areas noted on (Exhibits 1,2,6,7,8)

In the event that the existing breaks, after removal and review, are not sufficient to complete the project, the Owner will provide the additional necessary bricks (New or Historic significant bricks) to complete the project.

Construct (3) new 6'x10' concrete pads with solid grouted brick finish for the bench locations. See (Exhibit 1) for area callouts

Remove bench and brick at location (A) install to new brick/concrete pad at location (A1) (see also Exhibit 1, 2 3), and affix existing off-site bench.

Install new brick/concrete pad at location (B) for existing, off-site bench. (see Exhibit 1,4)

Remove existing and install new brick/concrete pad at location (C) for existing bench. (see Exhibit 6)

Provide lime based mortar to set and grout bricks in to keep them from shifting.

Carefully Remove and Reinstall ring and pathway bricks at sundial area, (see Exhibit 1, 7,8). Sundial pedestal and column should be carefully removed and then re-installed in the exact location from which it was taken.

Provide and install 1 ½” conduit sleeves under each of the 4 pathways for future expansion of the irrigation system see (Exhibit 7). Consult with Project Manager in field for best locations.

Provide and install water sealant on pathways per product standards. (Contractor do determine best product to use for the application if it is recommended)

It is recommended that grade be shot to ensure proper drainage to alleviate ponding and that a string line grid be installed prior to construction to ensure accuracy of the reinstalled masonry at the sundial area.

The center Sundial pedestal area will be raised 3-6” (roughly) in elevation to ensure the paths slope away from the center point in each direction. The whole circle may need to be raised to account for the years of settling and thatch buildup around it.

Park Volunteers or Employees will remove or move plants in these areas, do NOT removed any vegetation/plants/Roses/trees without the Project managers approval.

The Scope of work is in the Rose Garden area only unless otherwise directed. Any changes to the Scope of Work shall be agreed upon, in writing, by the OWNER, and OWNER’s Agent.

Provide hand labor for trenching in planter areas as deemed appropriate and necessary. NO MECHANICAL TRENCHING IN PLANTER BED. Contractor shall make every effort to provide irrigation trenching (conduit) under pathways and lawns in the garden. Trenching in plant beds is not permitted at any time, other than with prior arrangement in writing with Owner’s Agent. The same goes for compaction machine. There is to be no mechanical (gas-powered) equipment in planting bed and pathway areas. This includes the use of a trenching and compaction machines. The use of trenching or compaction machinery may be used if arranged in advance with OWNER and with OWNER’s Agent oversight during construction activities.

Contractor shall provide full restoration of all disturbed areas, including pathway hardscapes, Flower beds, damaged plants, carpentry, turf, and irrigation.

For More information or further detailed drawings and instruction feel free to call or email Michael Slater with the MSPC at (202) 425-5493



EXHIBIT 1



EX-2

Bench at area "A" to be removed and reclaimed



EX-3

Area "A1" where new pad and Bench from area "A" is to be installed.



Area "B" where new pad and new bench area to be installed



View looking from "B" to "A1" (axis line)



EX-6

Area "C" remove/salvage brick pad, install new pad and place existing bench back



Image looking South from area "D" to "C"



EXHIBIT 7

Sundial Area "D" This area needs extensive work, remove/salvage, clean all brick possible. Install path and ring of brick on new concrete base, with same placement and radius that it currently shows. Image below is a close up of the brick ring and path.



EXHIBIT 8

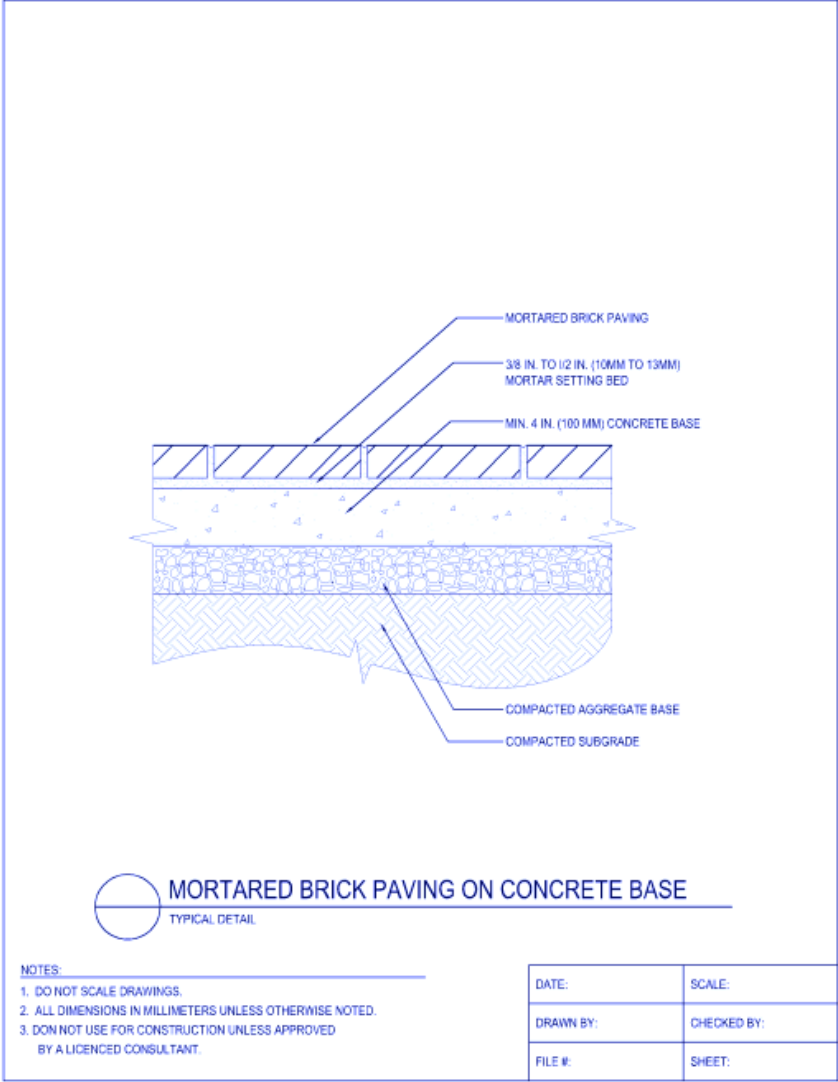


Exhibit 9 (Standard detail)

Parks and Natural Resources Planning Update – June 2020

Eagle’s View Park – on SPRAB agenda June 11, 2020. Tentatively scheduled for City Council July 27.

Geer Park is receiving a master plan update for 20 undeveloped acres. The first virtual open house will be open online beginning June 8. New amenities may include a skate park, ballfields, playground and shelter. To review the open house materials and take the first survey go to:

<https://geer-salem.hub.arcgis.com>

Bill Riegel Park, Phase 2 grant application review by Oregon Parks and Recreation Department have been postponed due to uncertainty about funding. This is from OPRD:

The LGGP is funded by Oregon State Lottery revenue. With the Governor’s Executive Order to “Stay Home, Save Lives,” restaurants and bars were closed to curb the spread of COVID-19. That significantly cut lottery revenues. While OPRD does have cash reserves, we first need to honor our existing LGGP grant obligations. When Lottery revenues resume, Lottery bond obligations will take priority over State Parks, and the LGGP will not be first in line to receive Lottery distributions. Consequently, we need to make these changes to the 2020 LGGP schedule.

- ***Large Grant Schedule:*** *The Large grant presentation meeting scheduled for June 9-11 in Salem to review current applications will be postponed until further notice. Hopefully, we can look at rescheduling the presentation meeting in September or October.*

Bush Pasture Park and Deepwood cultural landscape management plan work has begun. We are in the early stages of planning the public outreach and overall project schedule. The plan will define uses and management of different areas of the two parks and will provide guidance on how the properties will be managed in the future.

Woodmansee Park will have a park master plan update beginning this summer. The Aquifer Storage and Recovery System (ASR) will be enhanced and expanded over the next year, necessitating an update to the park master plan. We are looking for first virtual open house in early July.

Climate Action Plan is beginning with the hiring of a consultant. We received 10 proposals and interviews will be the week of June 8. The plan will provide a roadmap for how the city, local businesses, and residents can reduce greenhouse gas emissions and adaptations to climate change for a more resilient community.

Riverfront Park covered stage and amphitheater and a new 8-unit restroom will begin construction this summer. The restroom will be completed this year. The amphitheater will span two years for construction.

Parks and Recreation Advisory Board Meeting

June 11, 2020

Parks Operations Update

1. Re-Opening of Parks Amenities – Phase I

- Re-Opening of off-leash dog parks. Social distancing rules apply.
- Re-Opening of stand-alone tennis courts only. Those tennis courts opened are located at Bush Park, Woodmansee Park, Highland Park, River Road Park, Nelson Park, and Sumpter Park. Orchard Heights tennis court will remain closed this summer due to court rehabilitation project. Social distancing rules apply.
Tennis courts as part of a multi-purpose court must remain closed in Phase I of the Governor's Reopening Guidelines due to potential interaction with contact sports.

2. Supplemental Labor Update

- Effective, Monday, June 1, 2020 Department of Corrections allowed for the use of adults in custody again with the caveat that they work minimally around the general public. Based on this criteria, DOC crews will be focused on right-of-way landscaping and clean-up. DOC crews had been suspended from use for 2 ½ months. Marion County has not yet granted approval for use of adults in custody.
- Suspension on volunteer support has been lifted up to 25 individuals. Social distancing rules apply.
- Suspension of use of community service (CS) workers remains in effect. Determination on re-entry phase under Governor's Reopening Guidelines has been requested to the EOC.

3. Tree Inventory Volunteer

- Claire Warncke is working as a volunteer over the summer to assist with the tree inventory. Claire initially will be training with both Milan Davis and Don Gunther on tablet usage, dbh tape and how to collect the data, prior to inventorying independently.

4. Parks Projects

- College Heights – New replacement swing installed
- Royal Oaks – New replacement swing installed
- Weathers – New seesaw ordered for replacement installation
- McRae – New seesaw ordered for replacement installation
- Orchard Heights – tennis court rehabilitation project (June-Sept 2020)

5. Salem Parks Foundation Grant Awards

- Nelson Park (SWAN) – Bench replacement. Award amount = \$1,572
- Brown Road Park (NOLA) – Pollinator garden. Award amount = \$3,000
- Harry and Grace Thorp Park (NESCA) – Information kiosk. Award amount = \$1,950
- Clark Creek Park (Morningside) – Landscaping and hardscape project. Award amount = \$6,000. Supplements this cycles award from Salem Parks Improvement Fund (SPIF) application for project.
- Aldrich Park (SESNA) – Basketball Court asphalt replacement. Award amount = \$3,000

Parks and Recreation Advisory Board Meeting

June 11, 2020

Recreation Update

1. Event Update

- Continuing to see cancellation of large festivals, mid- size activities like fundraising walks/runs and company picnics, as well as smaller gatherings such as reunions and weddings.
- Have started to see interest again in reserving park facilities for small group activities such as yoga and outdoor church services. Public seems to be educated on phased approach to reopening and indicates they will abide by the orders given by the Governor, Oregon Health Authority and CDC. Currently in Phase 1 (25 people/group max), Phase 2 (max is 50 people indoors and 100 people outdoors).
- Use of City streets for rallies has been high. Coordination of City departments including Police, Public Works, Fire, and Parking Services, as well as the State of Oregon and Cherriot's (transit) is occurring.

2. Youth Recreation Programs

- STRIDE – The first event of the season was in May and offered virtually. We had a small number registered, but those participants thanked us for continuing to host the event even though they missed the adrenaline rush of running or walking next to others.
- Summer Programs – Some classes are moving to a virtual format. We are still assessing which programs might be able to continue in person with a new format to learning. Items being considered are things like the ability to cover costs, provide restrooms, and maintain proper social distancing. Concern about the possibility of a participant having or contracting COVID-19 through participation is recognized and taken seriously. Which phase Marion and Polk counties are in also has an impact.

3. Softball and Kickball Leagues/Tournaments

- Youth fastpitch play is not possible until at the earliest Phase 3 with limited spectators.
- Adult slow pitch play could be possible in Phase 2 if guidelines allow. This would be done without spectators and could happen as early as the last two weeks of June.
- Ten weekend tournaments have been canceled, plus 20th Annual Play for A Cure Oregon and USA Softball 10B Western Fast Pitch National (USA tournament will be held in 2022).
- Plan in place to try to host softball/kickball leagues if Polk County is able to progress to Phase 2 and guidelines allow. This would include checking players in at the gate (contact tracing), limiting number of players/team, extending dugouts, no spectators, no use of bleachers or playground equipment, encouraging players to use masks when not on the field, and having additional staff to appropriately perform sanitizing protocols. Game changes would include having the umpire back six feet from back of batter's box, catcher six feet behind umpire, six-foot circle around base if defense reaches circle before runner touches base it's a force out, separate home plate for runner and catcher, and separate balls for each team to use when playing defense.
- Sanitation efforts include Covid- 19 signage throughout park, hand sanitizer in dugouts, dug outs sanitized between games, restrooms wiped down consistently and fully cleaned every hour, limiting the number of people in restrooms, social distance signs and ground markings around park, one way direction when entering/exiting facility, requiring teams to exit park as soon as game ends, and modifying game times to allow time for cleaning and teams to exit/enter separately.

Informational Report to the Salem Parks and Recreation Advisory Board

June 11, 2020

Status of Unsheltered Persons Camping in City Parks – Spring 2020

Mark Becketl, AICP, Public Works Operations Manager

Background

City Council adopted Resolution 2020-18 on March 17, 2020, directing homeless/unsheltered persons to move from downtown sidewalks and allowing camping to occur in the undeveloped areas of Wallace Marine Park and Cascades Gateway Park. Estimates vary greatly, but the number of persons camping in the parks together at any given time totals about 100 to 200. Additional trash dumpsters, portable toilets, and potable water stations have been set-up to provide sanitation.

Wallace Marine Park

- Camping is allowed in the natural areas located outside the flood control berm along the Willamette River and at the north end of the park.
- Social service providers and non-profit organizations such as ARCHES, UGM, Be Bold Street Ministries, Hope Dealers, NW Human Services and Alluvium Health provide counseling, food and health services.
- Small scale program where garbage is exchanged for gift cards is moderately successful. Service Master and City Parks Operations crews have removed over 30 cubic yards of garbage and debris directly from abandoned campsites, with dumpsters emptied three times per week.
- Park is patrolled by DPI Security, Park Ranger, Code Enforcement and Salem Police Officers.
- Campers are damaging natural and riparian areas by cutting down trees, damaging/painting trees, removing native vegetation, starting campfires, littering, damaging trails/walkways, leaving needles, and defecating/urinating in campsites. Behavior varies from compliant to belligerent.

Cascades Gateway Park

- Camping is allowed in the natural areas located along Mill Creek and the north end of the park.
- Over a dozen mobile homeless or vehicle-based campers, are staying in the west parking lot. The number of vehicles is growing quickly and creating a shortage of parking spaces for park patrons.
- Social service providers and non-profit organizations such as ARCHES, UGM, Church at the Park, NW Human Services and Alluvium Health provide counseling, food, and health services.
- Fairly successful program where garbage is exchanged for gift cards is reducing litter. However, Service Master and City crews removed over 36 cubic yards of garbage and debris directly from abandoned campsites and remote garbage dump. Dumpsters are emptied three times per week.
- Park is patrolled by combination of Salem Police and Code Enforcement Officers
- Campers are damaging natural and riparian areas by cutting down trees, damaging/painting trees, removing vegetation, starting campfires, littering, damaging trails, leaving needles, and defecating/urinating in campsites and in Mill Creek. Behavior varies from compliant to belligerent.

Marion Square Park

- While camping is not allowed in the park, its proximity to the ARCHES and UGM shelters, Riverfront Park, and the underneath of the Willamette River Bridges makes the park an attractive day use location.
- City has provided portable toilets, handwashing station, potable water station and extra garbage cans.
- Park is patrolled by DPI Security (7:00 a.m. to 11:00 p.m.), along with the Park Ranger and Salem Police.
- Currently there is little or no damage to the park, just occasional litter and graffiti.

Looking Ahead to Summer/Fall 2020

- The current Emergency Declaration expires on June 30, 2020. The City is hoping to be in a Phase 2 status of reopening by late June, which will result in more parks amenities being open to the public and more public use, albeit limited, of ballfields, soccer fields, fishing, reservation shelters and disc golf courses. This may result in potential conflicts or competing use of park space between campers and park patrons. Those conflicts have not been occurring as much during the winter and spring months.
- At this time, it is unknown if camping will remain allowed in the two parks through the remainder of the summer and early fall or if other direction will be provided by City Council. One of the major goals of the City is to have sufficient affordable housing and expanded shelter options for those seeking shelter. Some of those options are scheduled to become available in October or November 2020.
- Parks Operations staff will continue to provide sustaining sanitation and hygiene services to the unsheltered population and to remove as much garbage as possible using contracted and inmate labor. Efforts will be made to limit and repair damage to the parks caused by camping activities.

Informational Report to the Salem Parks and Recreation Advisory Board

June 11, 2020

Status of Unsheltered Persons Camping in City Parks – Spring 2020

Mark Becketl, AICP, Public Works Operations Manager

Background

City Council adopted Resolution 2020-18 on March 17, 2020, directing homeless/unsheltered persons to move from downtown sidewalks and allowing camping to occur in the undeveloped areas of Wallace Marine Park and Cascades Gateway Park. Estimates vary greatly, but the number of persons camping in the parks together at any given time totals about 100 to 200. Additional trash dumpsters, portable toilets, and potable water stations have been set-up to provide sanitation.

Wallace Marine Park

- Camping is allowed in the natural areas located outside the flood control berm along the Willamette River and at the north end of the park.
- Social service providers and non-profit organizations such as ARCHES, UGM, Be Bold Street Ministries, Hope Dealers, NW Human Services and Alluvium Health provide counseling, food and health services.
- Small scale program where garbage is exchanged for gift cards is moderately successful. Service Master and City Parks Operations crews have removed over 30 cubic yards of garbage and debris directly from abandoned campsites, with dumpsters emptied three times per week.
- Park is patrolled by DPI Security, Park Ranger, Code Enforcement and Salem Police Officers.
- Campers are damaging natural and riparian areas by cutting down trees, damaging/painting trees, removing native vegetation, starting campfires, littering, damaging trails/walkways, leaving needles, and defecating/urinating in campsites. Behavior varies from compliant to belligerent.

Cascades Gateway Park

- Camping is allowed in the natural areas located along Mill Creek and the north end of the park.
- Over a dozen mobile homeless or vehicle-based campers, are staying in the west parking lot. The number of vehicles is growing quickly and creating a shortage of parking spaces for park patrons.
- Social service providers and non-profit organizations such as ARCHES, UGM, Church at the Park, NW Human Services and Alluvium Health provide counseling, food, and health services.
- Fairly successful program where garbage is exchanged for gift cards is reducing litter. However, Service Master and City crews removed over 36 cubic yards of garbage and debris directly from abandoned campsites and remote garbage dump. Dumpsters are emptied three times per week.
- Park is patrolled by combination of Salem Police and Code Enforcement Officers
- Campers are damaging natural and riparian areas by cutting down trees, damaging/painting trees, removing vegetation, starting campfires, littering, damaging trails, leaving needles, and defecating/urinating in campsites and in Mill Creek. Behavior varies from compliant to belligerent.

Marion Square Park

- While camping is not allowed in the park, its proximity to the ARCHES and UGM shelters, Riverfront Park, and the underneath of the Willamette River Bridges makes the park an attractive day use location.
- City has provided portable toilets, handwashing station, potable water station and extra garbage cans.
- Park is patrolled by DPI Security (7:00 a.m. to 11:00 p.m.), along with the Park Ranger and Salem Police.
- Currently there is little or no damage to the park, just occasional litter and graffiti.

Looking Ahead to Summer/Fall 2020

- The current Emergency Declaration expires on June 30, 2020. The City is hoping to be in a Phase 2 status of reopening by late June, which will result in more parks amenities being open to the public and more public use, albeit limited, of ballfields, soccer fields, fishing, reservation shelters and disc golf courses. This may result in potential conflicts or competing use of park space between campers and park patrons. Those conflicts have not been occurring as much during the winter and spring months.
- At this time, it is unknown if camping will remain allowed in the two parks through the remainder of the summer and early fall or if other direction will be provided by City Council. One of the major goals of the City is to have sufficient affordable housing and expanded shelter options for those seeking shelter. Some of those options are scheduled to become available in October or November 2020.
- Parks Operations staff will continue to provide sustaining sanitation and hygiene services to the unsheltered population and to remove as much garbage as possible using contracted and inmate labor. Efforts will be made to limit and repair damage to the parks caused by camping activities.