

# MINUTES

## Downtown Advisory Board

Thursday, September 27, 2018–12:00 P.M.  
Urban Development Conference Room  
350 Commercial St NE

This Action Agenda/Minutes complements the **MP3** and WMA recording of the meeting, which may be reviewed at <http://www.cityofsalem.net/Pages/downtown-advisory-board.aspx>

### 1. CALL TO ORDER

**Call to Order and Roll Call:** 12:03 PM

**Roll Call:** Hillary Banks; Brad Compton; Vincenzo Meduri; Laurie Miller; Jill Munger; Aaron Terpening; Dana Vugteveen

**Excused:** Chip Conrad; Jesse Hayes; Maria Palacio; Ronald Welter

**Staff:** Anita Sandoval; Sheri Wahrgren; Rebecca Ziegler, Patricia Farrell, Eunice Kim

### 2. APPROVAL OF AGENDA

**Motion:** Move to approve the agenda for September 27, 2018, as presented.

**Motion by:** Board Member Vugteveen

**Seconded by:** Board Member Terpening

**Action:** Approved the agenda for September 27, 2018, as presented.

**Vote:** Aye: Unanimous **Motion PASSES**

### 3. APPROVAL OF MINUTES

**Motion:** Move to approve the Minutes from July 26, 2018, as presented.

**Motion by:** Board Member Terpening

**Seconded by:** Board Member Miller

**Action:** Approved the Minutes from July 26, 2018, as presented.

**Vote:** Aye: Unanimous **Motion PASSES**

### 4. PUBLIC COMMENT on items not on the agenda – None

### 5. ACTION ITEMS - None

### 6. INFORMATION REPORTS

#### a. State Street Development Plan Overview – Eunice Kim

Comments/Questions: Banks, Wahrgren, Meduri

#### b. Riverfront Park Master Plan Update – Patricia Farrell

Comments/Questions: Wahrgren, Banks, Compton

**Motion:** Move for the Board to write a letter of support regarding the Riverfront Park Master Plan.

**Motion by:** Board Member Meduri

**Seconded by:** Board Member Miller

**Action:** Approved the Board to write a letter of support regarding the Riverfront Park Master Plan

**Vote:** Abstain: Terpening

**Motion PASSES**

#### c. Downtown Parking Permit Fee Summary – Sheri Wahrgren

*Downtown Employee Parking Permit Options - handout*

Comments/Questions: Vugteveen, Meduri, Miller

#### d. Creation of Residential Permit Program for Parking Structure – Sheri Wahrgren

Comments/Questions: Vugteveen, Miller, Terpening. Munger, Meduri, Banks, Compton

#### e. Gray Building Tour – Sheri Wahrgren

Comments/Questions: Munger, Vugteveen, Meduri

A tour will be arranged for the next meeting.

**f. Downtown Salem Resource Guide – Rebecca Ziegler**

*Downtown Salem Resource Guide – handout*

Comments/Questions: Meduri, Wahrgren

Most frequently asked questions included. Holiday banners will be installed the week of the Nov 5-11 and rotated out seasonally.

g. Congestion Task Force information was shared from a September 24 *Salem Reporter* article

**7. ADJOURN**

Upcoming meetings: October 25 and November 8 (instead of November 22). Chair Munger adjourned the meeting at 1:27 PM.

DRAFT

# City of Salem Riverfront Park Master Plan Update Draft Master Plan Concept

DOWNTOWN ADVISORY BOARD

SEPTEMBER 27, 2018

# Master Plan History

- |          |   |
|----------|---|
| 2001     | Previous Riverfront Park Master Plan Complete       |
| 2015     | 4 acre parcel purchased adjacent to Riverfront Park |
| 2017     | Peter Courtney Minto Island Bridge open             |
| 2017 -18 | Update of Riverfront Park Master Plan               |
- Three public meetings (2018 - January, February, September)
  - Two community surveys (2018 - January, February)
  - Three focus group meetings (2017 – November, December, January 2018)
  - Three draft concepts (2018 - February)
  - Refinement of Performance Area location (2018 -April-June)
  - One Draft Master Plan (2018 – September)
  - Council Work Session (2018 – September 24)
  - Salem Parks and Recreation Advisory Board (2018 – October 11)
  - City Council Meeting (2018 – November 13)

# Public Values: On-line Survey Summary

## What do you like / enjoy most about the Park?

- ▶ A Place to Walk, Run and Bike
- ▶ Open Space
- ▶ A Place to Gather
- ▶ Location and Connectivity
- ▶ Activities and Amenities



# Public Vision: On-line Survey Summary

## **What is your biggest concern about change?**

- ▶ Overdevelopment and loss of: open space, views, public access.
- ▶ Need for parking to accommodate growth.
- ▶ Public safety issues.

## **What would you like to see at the Park in the future?**

- ▶ New amenities.
- ▶ More bathrooms, paths, trees, play, etc.
- ▶ Better connections to the Willamette River.
- ▶ More shade at play area.
- ▶ More parking.



# Refining New Performance Area Location

## Challenges: using existing amphitheater location

- ▶ Complying with Willamette River Greenway setback requirements
- ▶ Blocking views of the Willamette River and Minto Bridge



## Proposed Solution: move to 4 acre addition

- ▶ Makes full use of new site; includes river viewing plaza available during non-event periods
- ▶ Eliminates issues with Willamette River Greenway compatibility
- ▶ Provides greater separation of performance events from other park uses
- ▶ Increased amphitheater capacity
- ▶ Maintains valued views

# Draft Master Plan – Key Elements

1. **Adds greenspace and new performance area**
2. **Increases river access and river recreation opportunities**
3. **Creates multiple-use paths and plazas**
4. **Accommodates multiple park users/uses**
5. **Expands parking** (55-60 additional spaces in south lot)
6. **Adds restrooms in north and south locations**
7. **Provides continued and enhanced use of existing amphitheater**
8. **Adds more shade** (shade structures and strategic trees)
9. **Provides connections to downtown** (gateway elements)
10. **Enhances Willamette River riparian area**



# Draft Riverfront Park Master Plan



## LEGEND

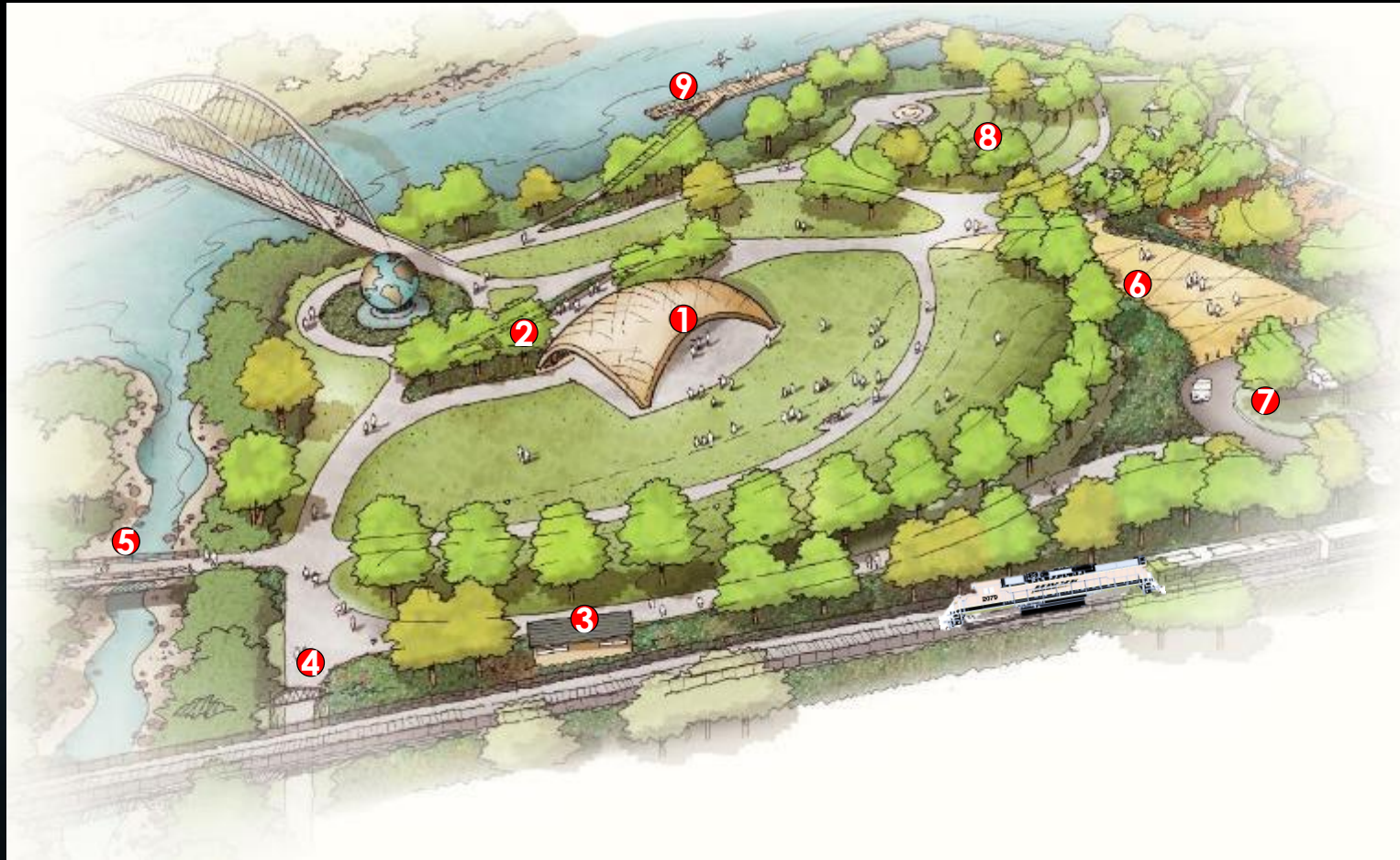
- |                                |  |                                   |                            |                                 |                                   |
|--------------------------------|--|-----------------------------------|----------------------------|---------------------------------|-----------------------------------|
| ① FUTURE BRIDGE                | ⑥ ARRIVAL PLAZA                              | ⑪ STONE TERRACES - NATURE PLAY    | ⑮ EXPANDED DOCK            | ⑳ NEW RESTROOMS                 | ㉔ BIKE SHARE                      |
| ② PRINGLE CREEK GATEWAY        | ⑦ LABYRINTH PAVING OVERLAY                   | ⑫ EXPANDED PARKING (55-60 SPACES) | ⑯ SEASONAL FACILITY        | ㉕ ENHANCED RIPARIAN AREA        | ㉖ SMALL PLAZA AND GATEWAY ELEMENT |
| ③ NEW RESTROOMS                | ⑧ PICNIC PAVILIONS                           | ⑬ FLOATING RIVERWALK              | ⑰ COURT STREET ENTRY PLAZA | ㉗ KAYAK RENTAL                  |                                   |
| ④ OVERLOOK                     | ⑨ SLIDE MOUND                                | ⑭ PROPOSED CAROUSEL ADDITION *    | ⑱ EXISTING SPLASH FOUNTAIN | ㉘ FESTIVAL STREET               |                                   |
| ⑤ COVERED STAGE & AMPHITHEATER | ⑩ EXISTING PLAYGROUND AND EXISTING RESTROOMS | ⑰ GATEWAY ELEMENT                 | ㉙ EXISTING ROTARY PAVILION | ㉚ MAINTENANCE BUILDING AND YARD |                                   |

\* SUBJECT TO SEPARATE OUTREACH AND APPROVAL PROCESS





# Draft Riverfront Park Master Plan – Performance Area

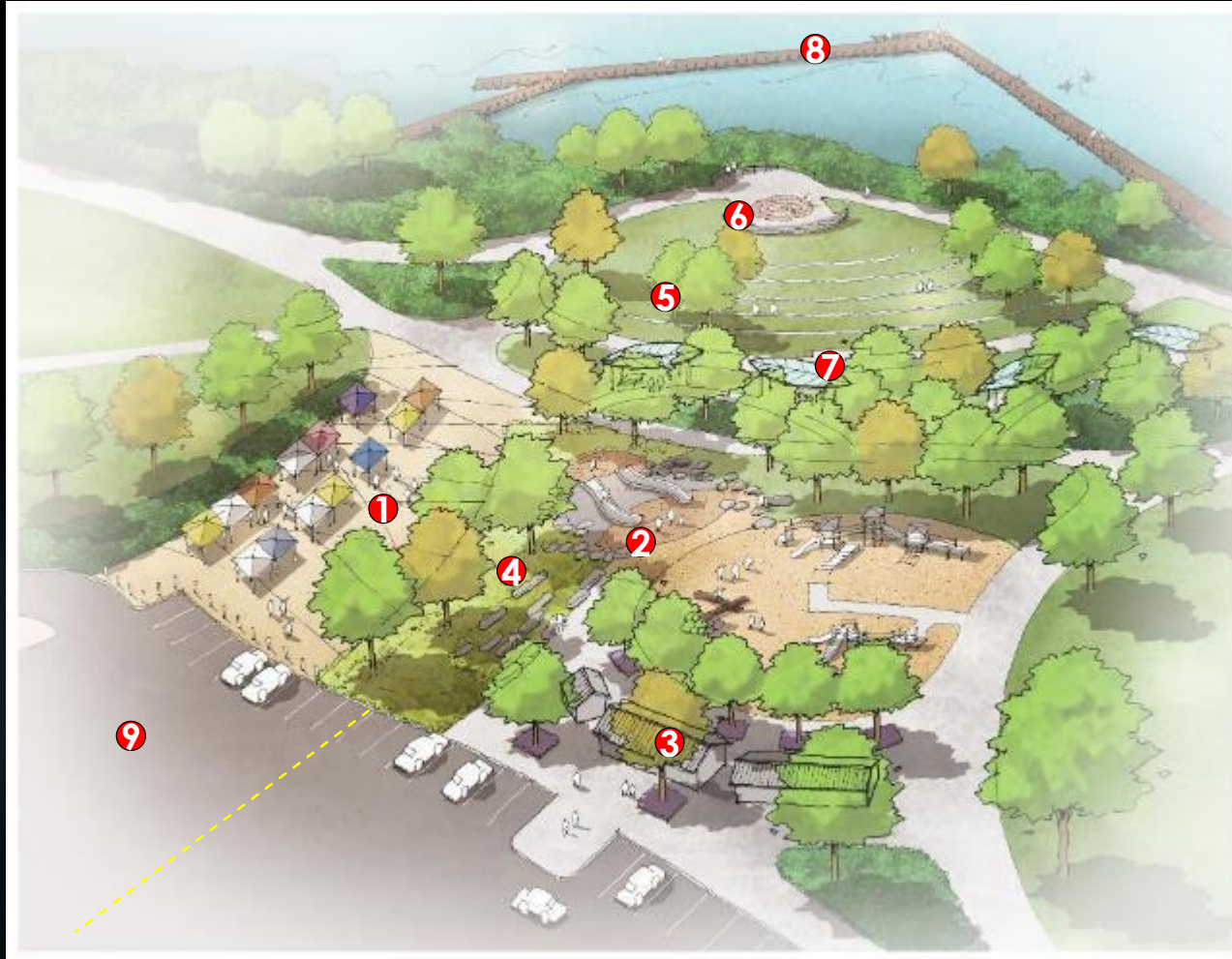


- 1 Rotary Stage & Performance Area
- 2 River Overlook Plaza
- 3 New Restroom
- 4 Future Pringle Creek Trail/Gateway
- 5 Future Pedestrian Bridge
- 6 Arrival Plaza
- 7 Expanded Parking
- 8 Existing Amphitheater
- 9 Floating Boardwalk





# Draft Riverfront Park Master Plan – South Arrival Area

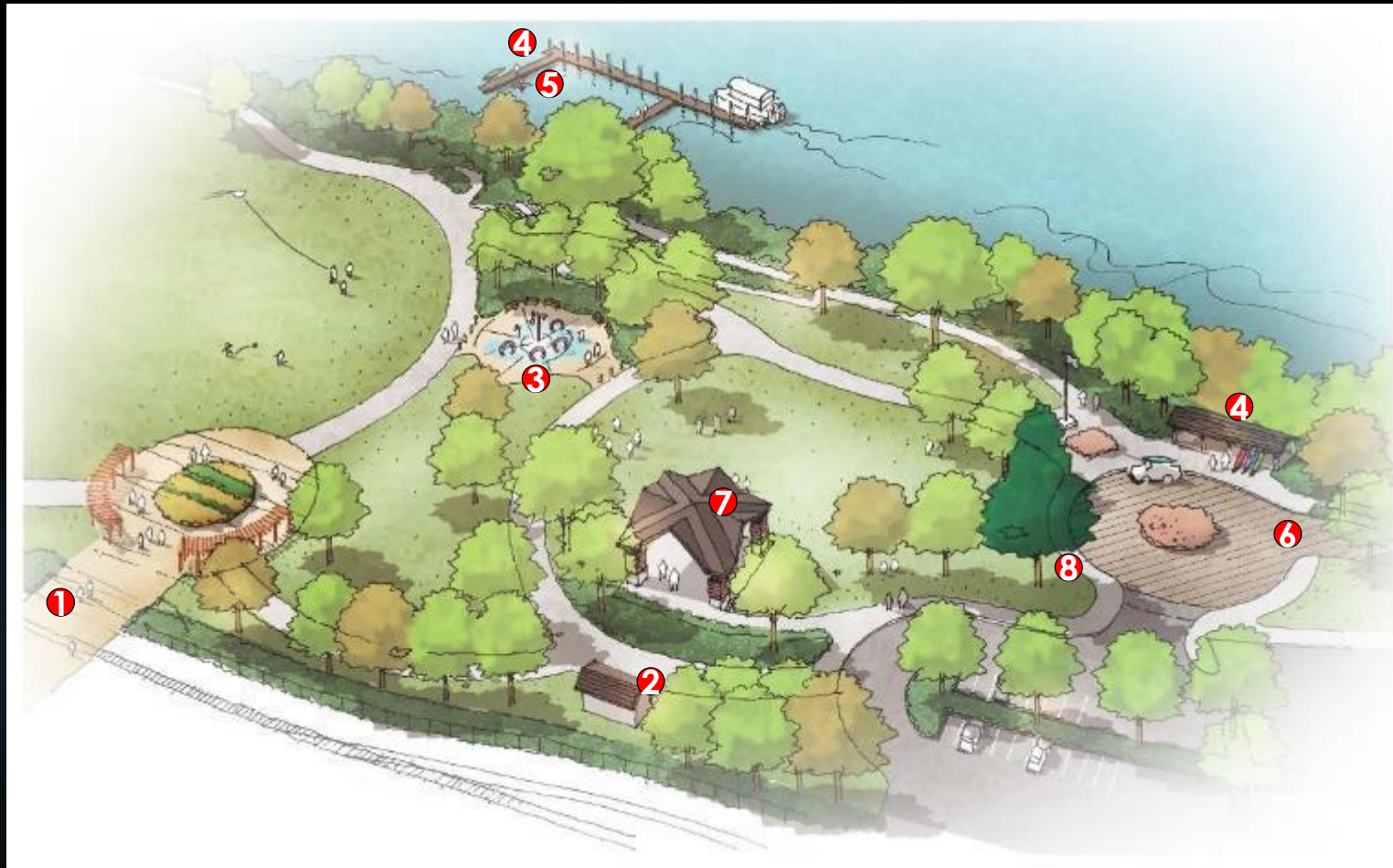


- 1 Arrival Plaza
- 2 Expanded Play Area
- 3 Existing Restrooms
- 4 Stone Terraces & Nature Play
- 5 Terraces with Trees
- 6 Labyrinth (paving overlay on exist. Stage)
- 7 Shelters (4) for shade
- 8 Floating Boardwalk
- 9 Expanded Parking (55-60 spaces)





# Draft Riverfront Park Master Plan – North Meadow



- 1 Court Street Entry
- 2 New Restroom
- 3 Existing Splash Fountain
- 4 Kayak Rental
- 5 Expanded Dock
- 6 Shared Use (Festival) Street
- 7 Existing Rotary Pavilion
- 8 Holiday Tree



## Next Steps

**October 11, 2018** – Salem Parks and Recreation Advisory Board

**November 13, 2018** – Council Meeting

## Private Initiatives

- ▶ Rotary Covered Stage (private fundraising)
- ▶ Carousel addition (separate outreach and approval process)



# Draft Riverfront Park Master Plan – Questions?



## LEGEND

- |                                |  |                                   |                            |                                 |                                   |
|--------------------------------|--|-----------------------------------|----------------------------|---------------------------------|-----------------------------------|
| ① FUTURE BRIDGE                | ⑥ ARRIVAL PLAZA                              | ⑪ STONE TERRACES - NATURE PLAY    | ⑮ EXPANDED DOCK            | ⑳ NEW RESTROOMS                 | ㉔ BIKE SHARE                      |
| ② PRINGLE CREEK GATEWAY        | ⑦ LABYRINTH PAVING OVERLAY                   | ⑫ EXPANDED PARKING (55-60 SPACES) | ⑯ SEASONAL FACILITY        | ㉑ ENHANCED RIPARIAN AREA        | ㉕ SMALL PLAZA AND GATEWAY ELEMENT |
| ③ NEW RESTROOMS                | ⑧ PICNIC PAVILIONS                           | ⑬ FLOATING RIVERWALK              | ⑰ COURT STREET ENTRY PLAZA | ㉒ KAYAK RENTAL                  |                                   |
| ④ OVERLOOK                     | ⑨ SLIDE MOUND                                | ⑭ PROPOSED CAROUSEL ADDITION *    | ⑱ EXISTING SPLASH FOUNTAIN | ㉓ FESTIVAL STREET               |                                   |
| ⑤ COVERED STAGE & AMPHITHEATER | ⑩ EXISTING PLAYGROUND AND EXISTING RESTROOMS | ⑰ GATEWAY ELEMENT                 | ㉔ EXISTING ROTARY PAVILION | ㉕ MAINTENANCE BUILDING AND YARD |                                   |

\* SUBJECT TO SEPARATE OUTREACH AND APPROVAL PROCESS







# Existing Conditions - Opportunities and Constraints



**CONTEXT MAP**  
CITY OF SALEM - RIVERFRONT MASTER PLAN

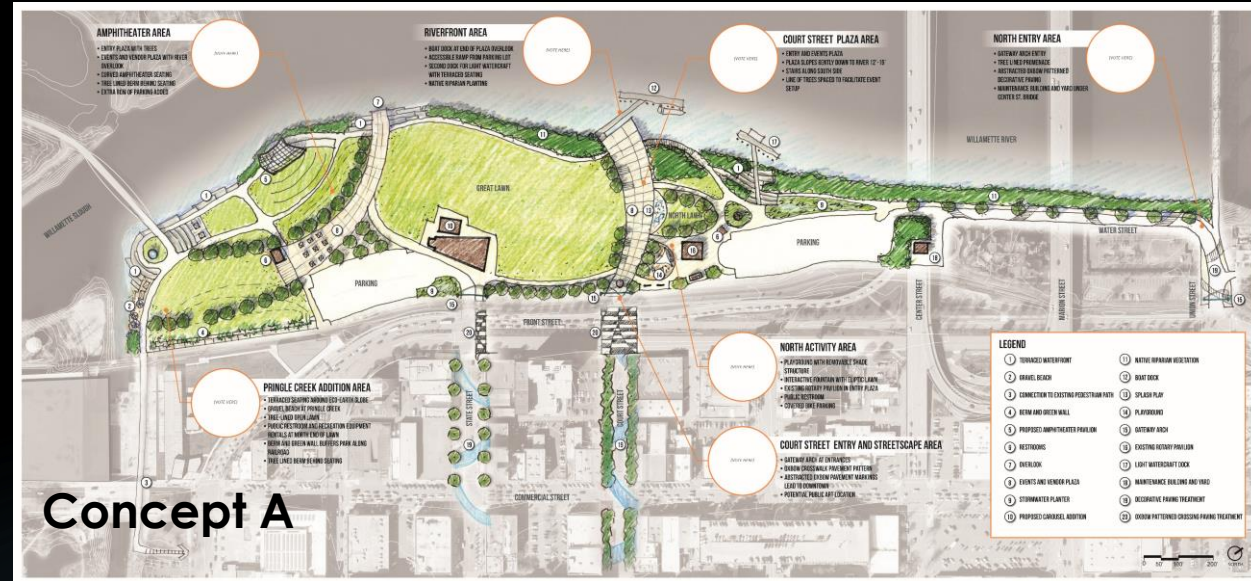


- Nodes – important places
- Connectors – links two or more primary use areas
- Primary Use Areas
- Primary Entry (Court Street)
- City Grid
- Project Area

----- Appx. alignment of Greenway setback



# Alternative Concepts



Three alternatives developed to highlight the public's vision for the future of Riverfront Park

# The Alternatives – What People Said...

The **Green Space And Natural Elements of the concepts are popular**—especially the trees, access to the river, and rentals. Many commenters would like to see even more natural features.

I would like to see the pathways through the park remain wide or be wider to accommodate pedestrians, their dogs and bicycle traffic.

I love the idea of being able to rent bikes, canoes, and paddle boards

The river view is a defining characteristics that makes this park so unique — take advantage of the view.

I am concerned that some of the designs are too busy and add a little too much structure and hard surface. I like the green, the river, the openness.

Other **frequently suggested features** include paths that accommodate multiple uses, amenities for bikers, dog-friendly additions.



# The Alternatives – What People Said...

Make sure there are bathrooms very close to the kids' areas and at both ends of the park.

I like leaving open a lot of green space - the ability to install a temporary ice skating rink was genius!

We keep adding to the riverfront, but have not added parking. I feel parking needs to be addressed.

Riverfront Park needs **MORE PARKING AND RESTROOMS.**

What about leaving the existing playground in its current location?

There should be areas with more trees. In the summer, shaded areas will be very appreciated.

Riverfront Park should have **MORE PLAY AREA** and attention paid to the location of play areas and other amenities.

# Currently in a planning process

## Private Initiatives

- ▶ Rotary Covered Stage
- ▶ Carousel addition

## City of Salem Phase I Initiatives

- ▶ Utility upgrades
- ▶ New northern restrooms
- ▶ Amphitheater grounds; expanded parking; arrival plaza







## Downtown Employee Parking Permit Options

Address	Pringle Parkade 325 High St SE	Liberty Square Parkade 199 Liberty St SE	Chemeketa Parkade 300 Commercial St NE	Marion Parkade 400 Marion St NE	Union Lot 100 Union St NE	Riverfront North Lot 300 Water St NE
Full Time	\$57.00	\$72.00			\$20.00	\$20.00
Full Time Covered			\$62.00	\$58.00		
Full Time Uncovered			\$54.00	\$38.00		
Part Time	\$30.00	\$40.00				
Part Time Uncovered			\$33.00	\$26.00		
Motorcycle	\$20.00	\$25.00	\$22.00	\$22.00		
Daily	<del>\$5.00</del>	<del>\$5.00</del>	<del>\$5.00</del>	<del>\$5.00</del>	\$5.00	\$5.00

### Did You Know?:

- All you need for a part time permit is a memorandum from your employer stating you work 30 hours or less per week.
- If you have a special event, you can purchase a Temporary On-street Event parking permit. Go to [www.cityofsalem.net/parking](http://www.cityofsalem.net/parking).
- If you are remodeling your store, your contractor, sub-contractors, and construction employees need to purchase a Construction Maintenance parking permit to park on-street or a Parkade parking permit at [www.cityofsalem.net/parking](http://www.cityofsalem.net/parking).
- If you don't have your permit properly displayed you can receive a parking ticket.
- Enforcement hours are 8 a.m. to 8 p.m.
- You can visit our website anytime to get information about parking at [www.cityofsalem.net/parking](http://www.cityofsalem.net/parking)



News about Salem – In-depth, Accurate, Trusted

CITY GOVERNMENT

# Congestion task force to recommend 18 ideas to ease downtown traffic

A packet of ideas to cut down traffic, such as adding more guide signs, discouraging parking and extending certain roads, will go before city council in the coming weeks.

Troy Brynelson — Salem Reporter September 24, 2018 at 4:51pm





***The Marion Street Bridge in early September. A task force has since February worked on ideas to cut traffic congestion around the bridges and will soon present ideas to Salem City Council.  
(Moriah Ratner/Special to Salem Reporter)***

Travel times over Salem's downtown bridges could be cut in half with a series of modest changes recommended recently by the city's Congestion Relief Task Force.

That is good news for those making the stop-and-go trips over the bridges. City officials warn, though, that commuters could slowly see congestion return over the next decade.

Now it's up to the Salem City Council to settle on the immediate remedies.

The task force finished months of work earlier this month, advancing 18 ideas that include building a new road, adding new signs to guide drivers, installing speed limit signs that adjust for traffic flow and closing some sidewalks.

“I think the thing that’s really good to know was this committee was absolutely committed,” Mayor Chuck Bennett said. Bennett served on the task force with councilors Jim Lewis, Cara Kaser and Chris Hoy.

The 18 ideas are listed below. Only four were recommended unanimously. The task force will also highlight a handful of ideas that could be researched further.

The task force started work in February, charged with easing traffic congestion around Marion and Center street bridges in ways that don’t involve the proposed Salem River Crossing. The task force got help from the city’s public works department and firms DKS Associates, Angelo Planning and Cogito Partners.

While ideas ranged to building new roads at a cost of millions of dollars, Bennett, Kaser and Lewis said the task force decided to hone the list to short-term tweaks.

“What can we do quickly, inexpensively and will have a positive effect?” Lewis said, describing the task force’s charter. Hoy couldn’t be reached for comment.

Costs are yet to be determined. Some proposals will be presented with cost estimates, but Julie Warncke, the city’s transportation

planning manager, said the price tag won't be clear until the council focuses on specific recommendations.

"It really depends on them," said Warncke. "They'll say 'We think these two are the easiest to bite off, what's the next step?'"

The effects might be fleeting. A draft written by public works staffers advised councilors to keep in mind that traffic is still expected to get worse over the next decade.

"The benefits are not long-lived. Travel times initially would be reduced by as much as 50 percent, while some areas would not see any reduction," the draft said. "Travel times would return to preconstruction levels within 10 years."

Task force members, however, split on the wording during the final meeting. Kaser worried the language was too direct.

"It just reads very absolutely to me, which I'm always wary of. This will do this, this won't do this. I think it could be better. 'The benefits may not be long-lived.' 'Travel times initially could be reduced,' and then 'travel times could return to preconstruction levels within 10 years of being built,'" she said during the meeting.

Bennett and Lewis contended softening the language would downplay the risk that congestion poses and traffic studies that have already been conducted. The task force settled on noting the points were based on current traffic research.



Kaser, who applauded the task force for steering away from discussing a third bridge, said she was trying to be clear about the task force's responsibilities.

"We were looking at current conditions. We didn't base our analyses on future conditions, we were looking at current things," she said. "I think we met six times. To me it seems disingenuous to say you did all this work but our future problems are going to be so significant, so what's the point?"

Bennett and Lewis told Salem Reporter they are concerned for future congestion, but they too supported the fixes, however brief, and the report that will go before city council.

"There aren't any long-term solutions that aren't wildly expensive," Bennett said. "It will be a challenge for city councilors now and in the future how to deal with these long-term growth slopes that indicate we're going to have heavier and heavier traffic."

Lewis and Bennett also said they expect there will be an opportunity for the public to have its say on the proposals. No public comment was allowed before the task force.

The 18 recommendations:

- Improve signs that guide drivers near and on the bridges.
- Delay pedestrian crossings at some crosswalks during peak traffic.

- Remove the barrier on Musgrave Avenue, east of Wallace Road, and allow traffic to drive through Wallace Marine Park.
- Install signs that tell drivers how long travel to certain places will be based on the traffic.
- Install speed limit signs on state Highway 22 that adjust based on traffic.
- Discourage parking at peak traffic, likely by increasing costs at parking structures or on the street level.
- Increase mass transit circulation in the downtown core.
- Create park-and-ride services at Wallace Marine Park, as well as ways to walk, bike or take a shuttle.
- Add extra lanes on Taggart Drive.
- Add a median to stop turns from Wallace Road Northwest onto Taggart Drive.
- Close the north crosswalk at Front Street Northeast and Court Street Northeast.
- Improve timing of traffic signals at strategic areas.
- Improve the speed of emergency response times on the bridges.

- Extend Marine Drive Northwest from Harritt Drive Northwest to Cameo Street Northwest.
- Work with major employers and the state to develop a “commute trip reduction plan” that includes flexible work hours.
- Work with major employers and the state to incentivize people to bike, walk, bus, carpool or otherwise to reduce the number of drivers.
- Build more pedestrian and bicycle connections to the Union Street Bridge.
- Plan for future land-use.