



City of Salem  
**PLATFORM**  
Design Guidelines

AUGUST 2, 2021



# TABLE OF CONTENTS

Overview	4
Purpose	5
Design Concept/ Approved Materials	6
Safety	7
Accessibility	8
Concept Illustrations	9
Conceptual Renderings	17
Permits	



# OVERVIEW

## What is a Platform?

A “platform” is an extension of the sidewalk that converts on-street parking into temporary public spaces such as seating areas or mini-parks. These spaces often consist of patio areas, planters, benches, cafe tables, spaces for art, bicycles, umbrellas or other weather protection, and lighting. The most common use is outdoor dining for adjacent restaurants. Platforms may replace up to four on-street parking spaces.

## Example Platforms:





# PURPOSE

## **Why do we need a design guide?**

The City of Salem Platform Design Guide was created in order to help downtown businesses utilize on-street parking stalls to benefit their business and their customers. These platforms can provide additional outdoor dining spaces and increase the vibrancy, walkability, and vitality of downtown Salem.

This Design Guide provides those businesses and property owners with access to a general design that can be implemented quickly with fast-track approvals. This guide helps create consistency and ensure safety and accessibility considerations are met.

Each platform location will require adjustments to meet unique challenges and the City of Salem will work with each individual as they adjust the design concept accordingly.

# **Design Concept**

## **Design Goals**

The City of Salem Platform Conceptual Design is intended to be easily constructed with readily available materials. The design utilizes standard framing members and layout. Attachments and connections are meant to be simple and easily understandable. The goal of the design was to be something affordable for businesses to have constructed. Additionally, design options are included for adaptation and adjustment.

Platforms are meant to be safe and secure. Planter boxes are required at the corners to provide protection and railings designed to allow visual transparency into the platform are required. Railing at 42" is to provide 200 pounds per linear foot of fall protection. Overhead framing is allowed only to support lightweight canopy materials and lighting. A stainless steel metal plate one piano hinges is meant to provide an accessible transition between the existing sidewalk and the new platform. Clearance of at least 4" at the curb is required under the platform to allow for stormwater drainage and access to clean debris when required.

The platform is also meant to be temporary and easily removed.

## **Materials**

Materials should be durable and aesthetically appropriate. Wood, metal, and other synthetic decking materials shall be considered for the floor surface. Planter boxes are intended to be constructed using wood or metal. Between planter boxes, metal cable railing is required to allow visual transparency. In order to facilitate an accessible transition, where the platform surface is not level with the adjacent sidewalk, a stainless steel metal plate on hinges may be required.

# Safety

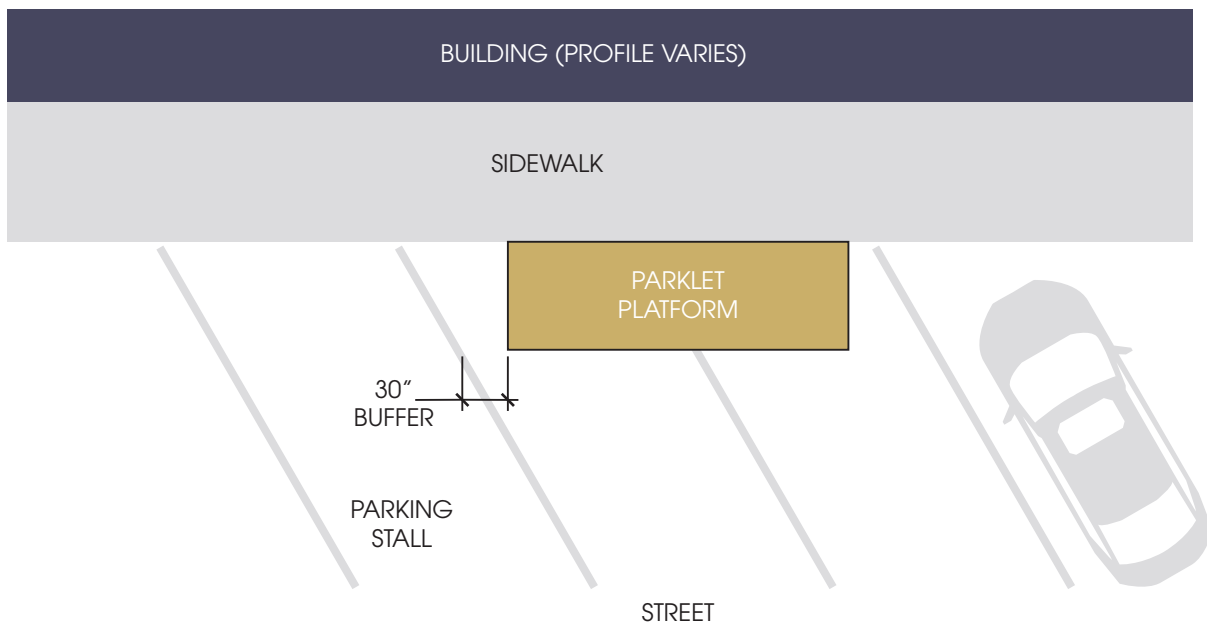
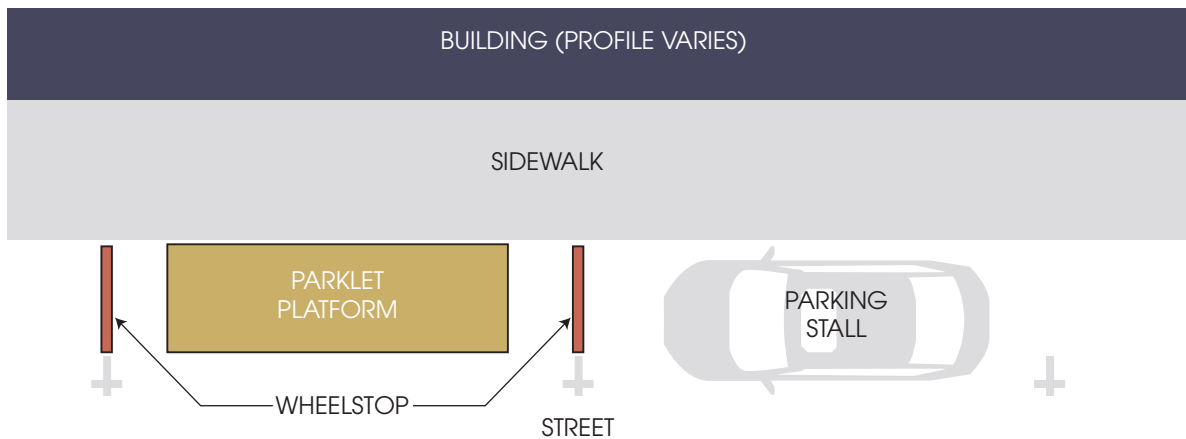
Safety requirements include:

## Structural

- A guardrail at 42" above the finished floor able to withstand 200 lbs/linear foot of force.
- A floor surface able to withstand a live load of 100 lbs per square foot
- All overhead structural elements are to be light weight and may require engineering

## Vehicular

- Wheel stops must be provided adjacent to parking
- Platform shall be offset two feet from any adjacent drive lane

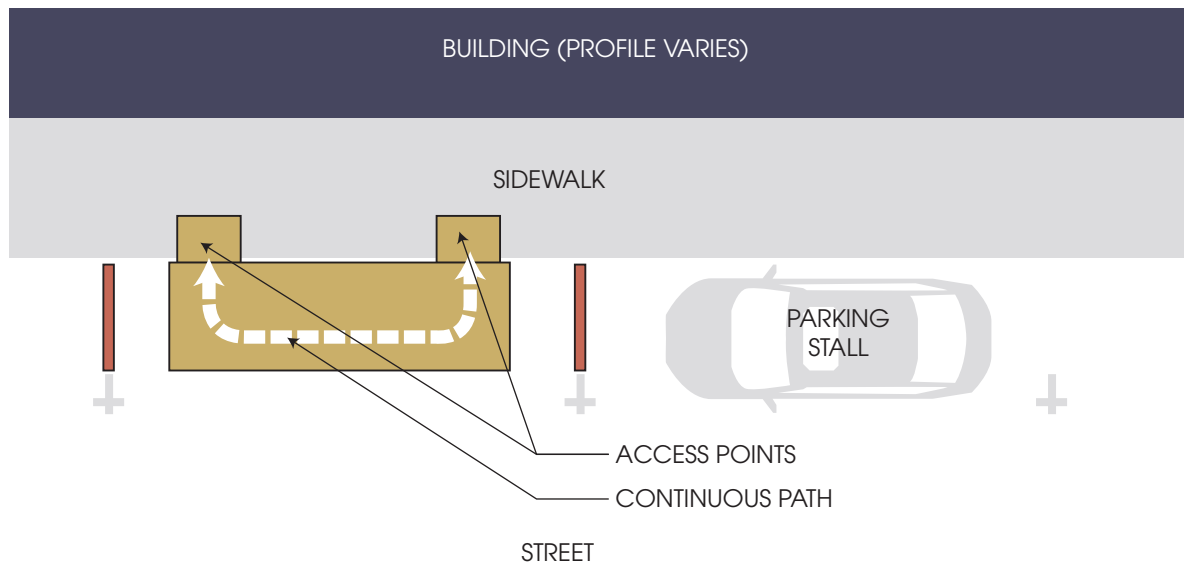
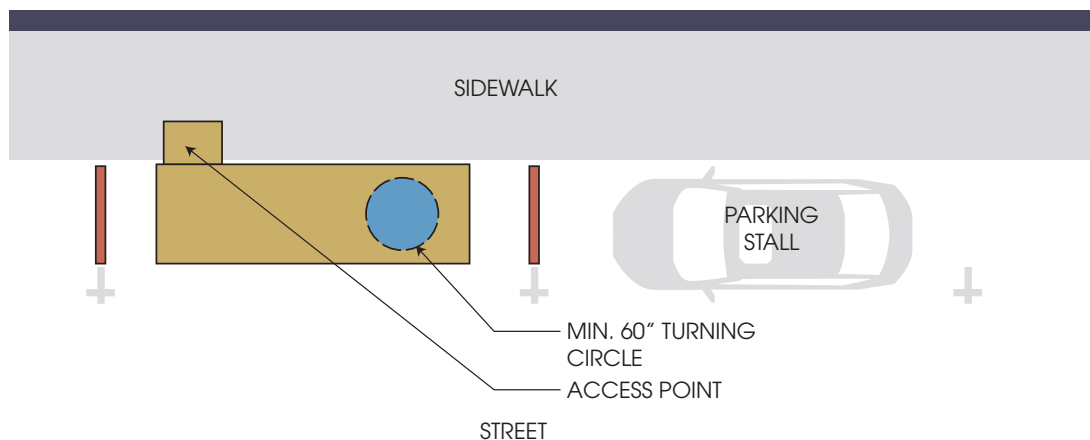


## GENERAL SAFETY CONDITIONS

## Accessibility

The platform must provide entrance and exit points to the sidewalk with a transition of less than 1/2". The slope on the platform cannot exceed 2% cross slope and not more than 5% at any ramp or access point. Handrails and guardrails will be installed as required to meet all applicable codes.

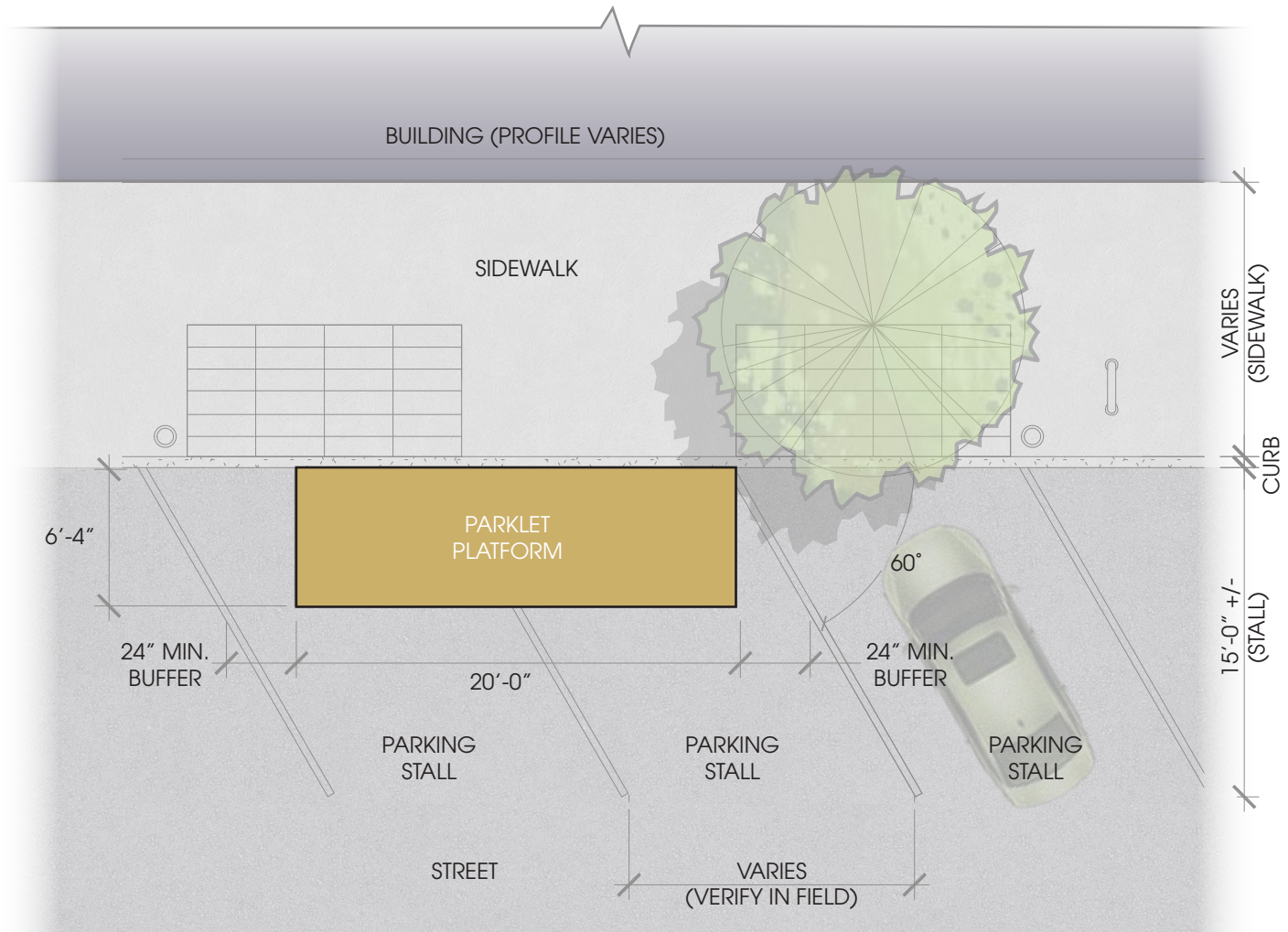
Additionally, each platform must accommodate (1) 60" diameter clear area to allow for turn-around or provide a continuous path from entry to exit.



## ACCESSIBILITY

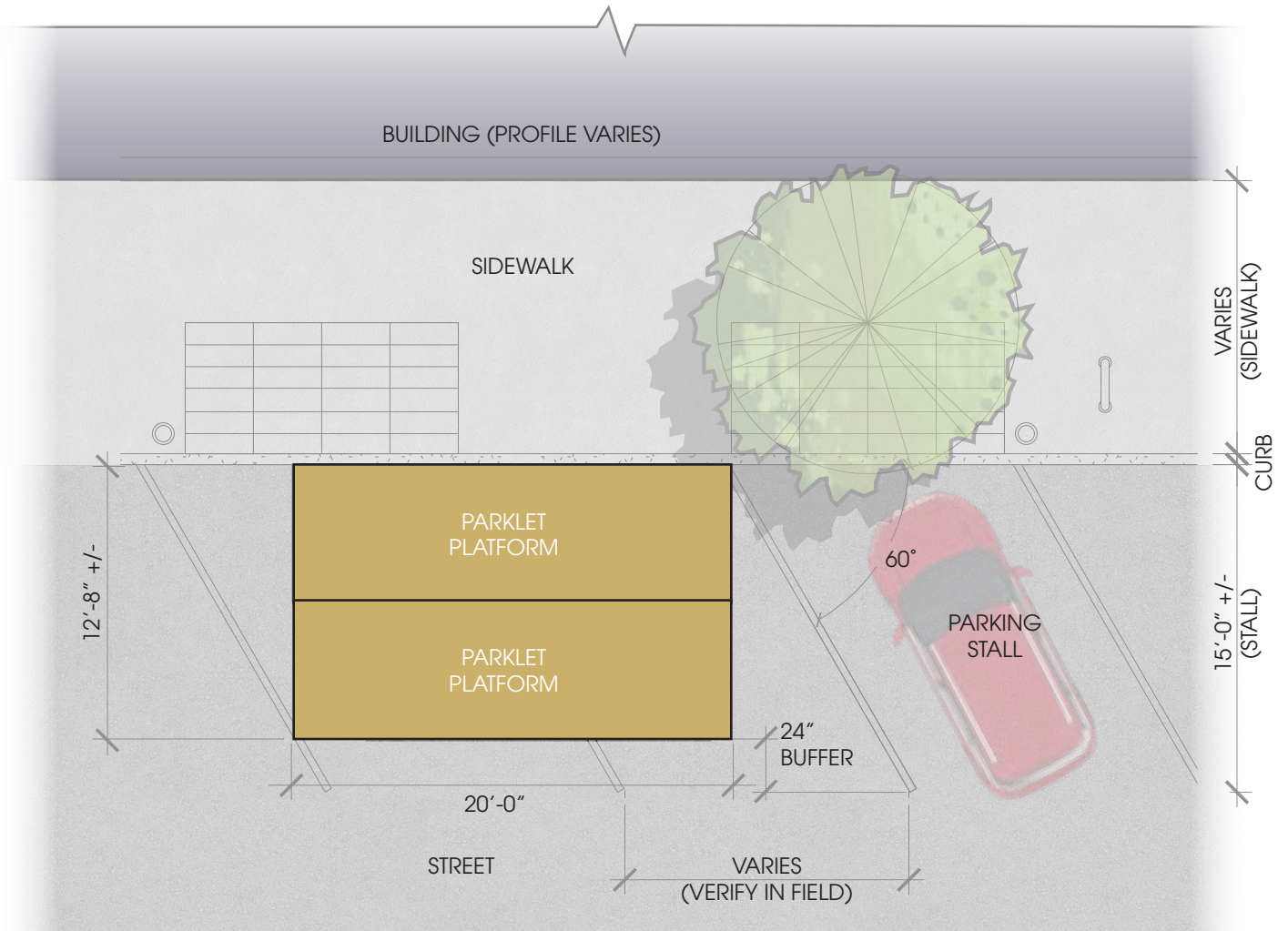
## Concept Illustrations

A “platform” is an extension of the sidewalk that converts on-street parking to temporary public spaces such as seating or a mini-park. These spaces often consist of patio area, planters, benches, cafe tables, space for art, bicycles, umbrellas or other weather protection, and lighting. The most common use is outdoor dining for the immediately adjacent restaurants. Platforms usually replace one or two on-street parking spaces.

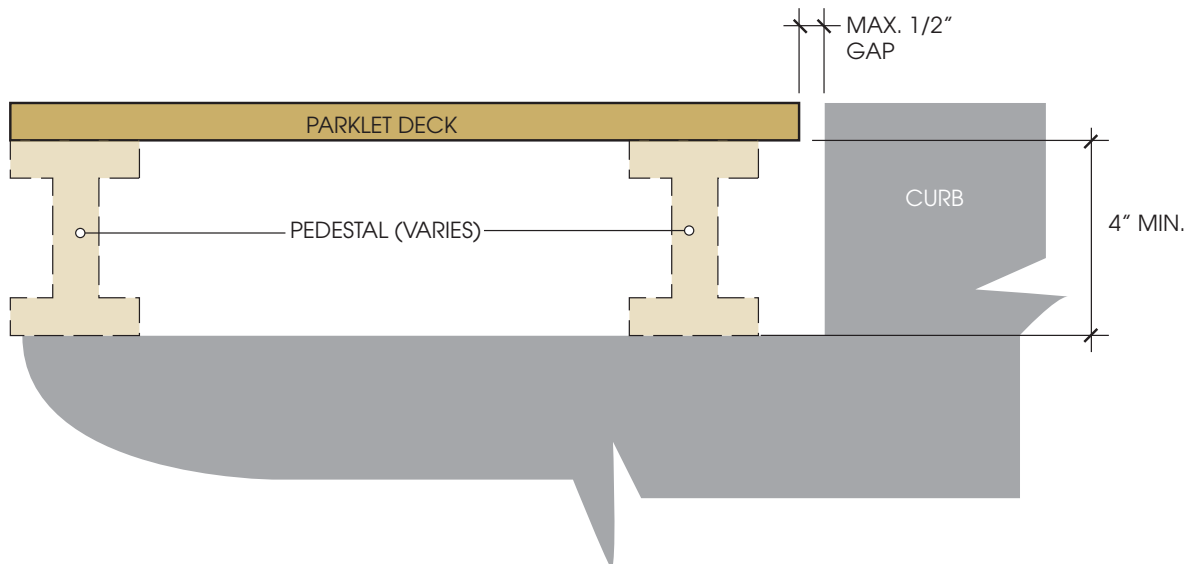


### BASE SITE DESIGN (ANGLED PARKING)

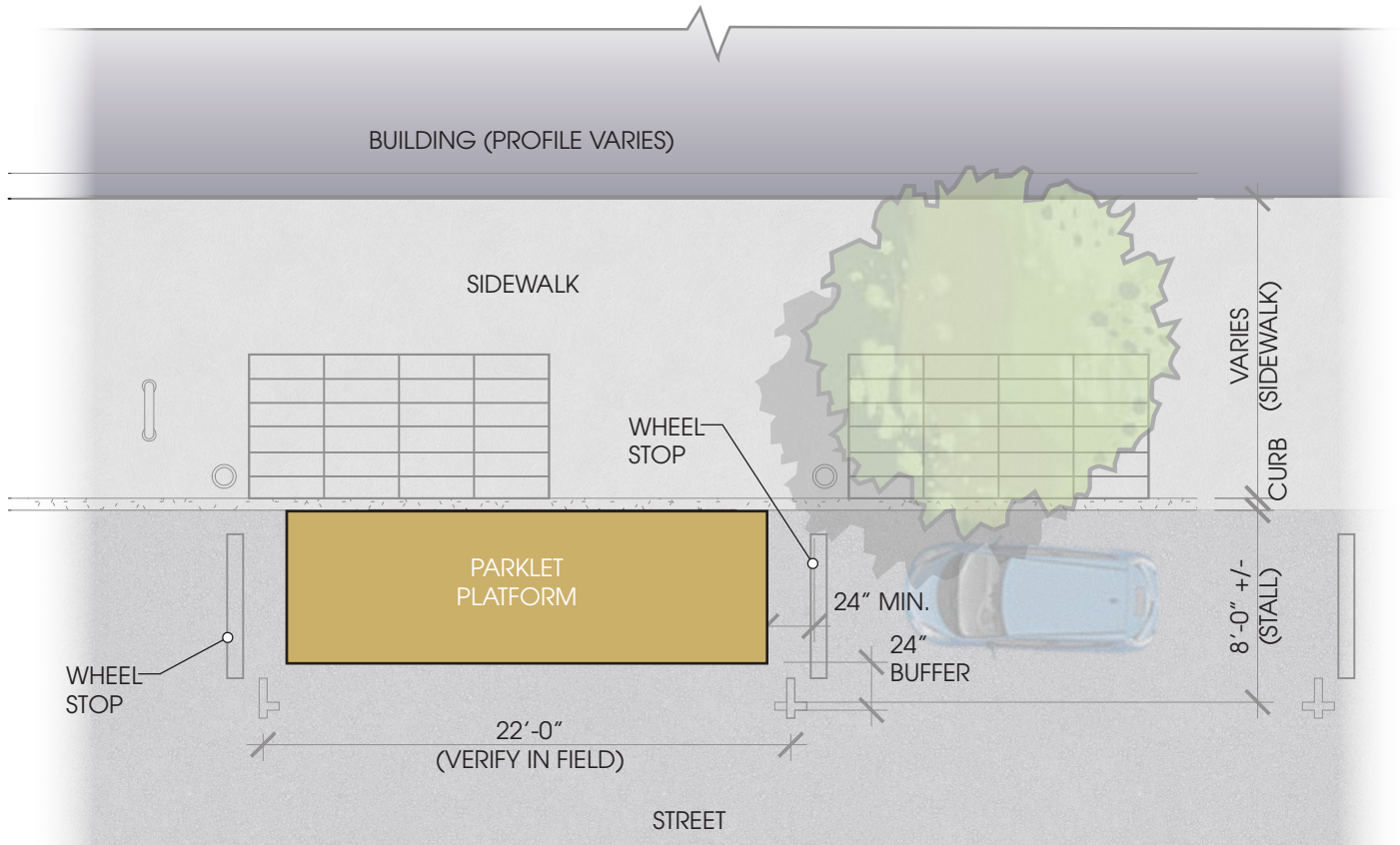




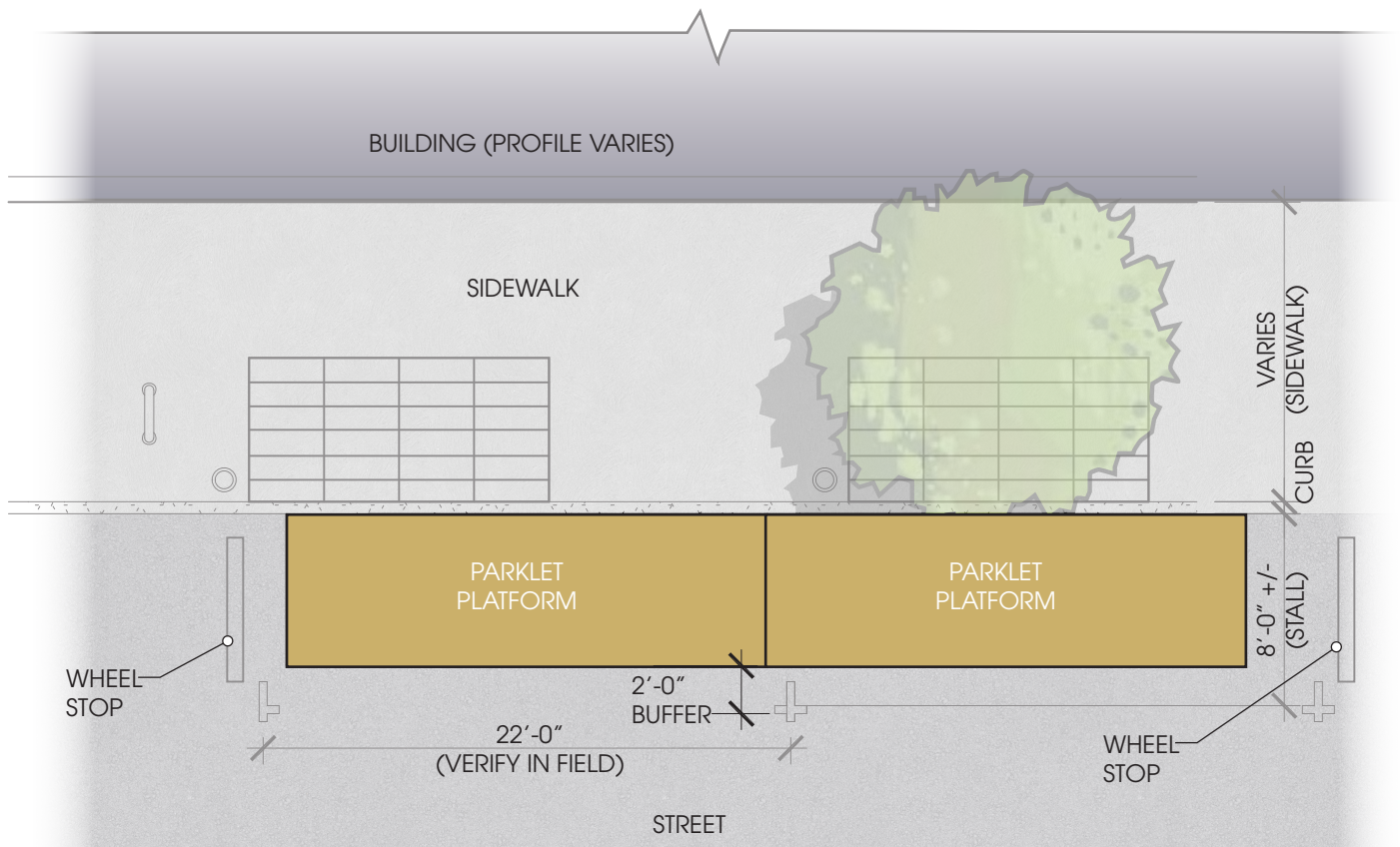
## EXTENDED SITE DESIGN (ANGLED PARKING)



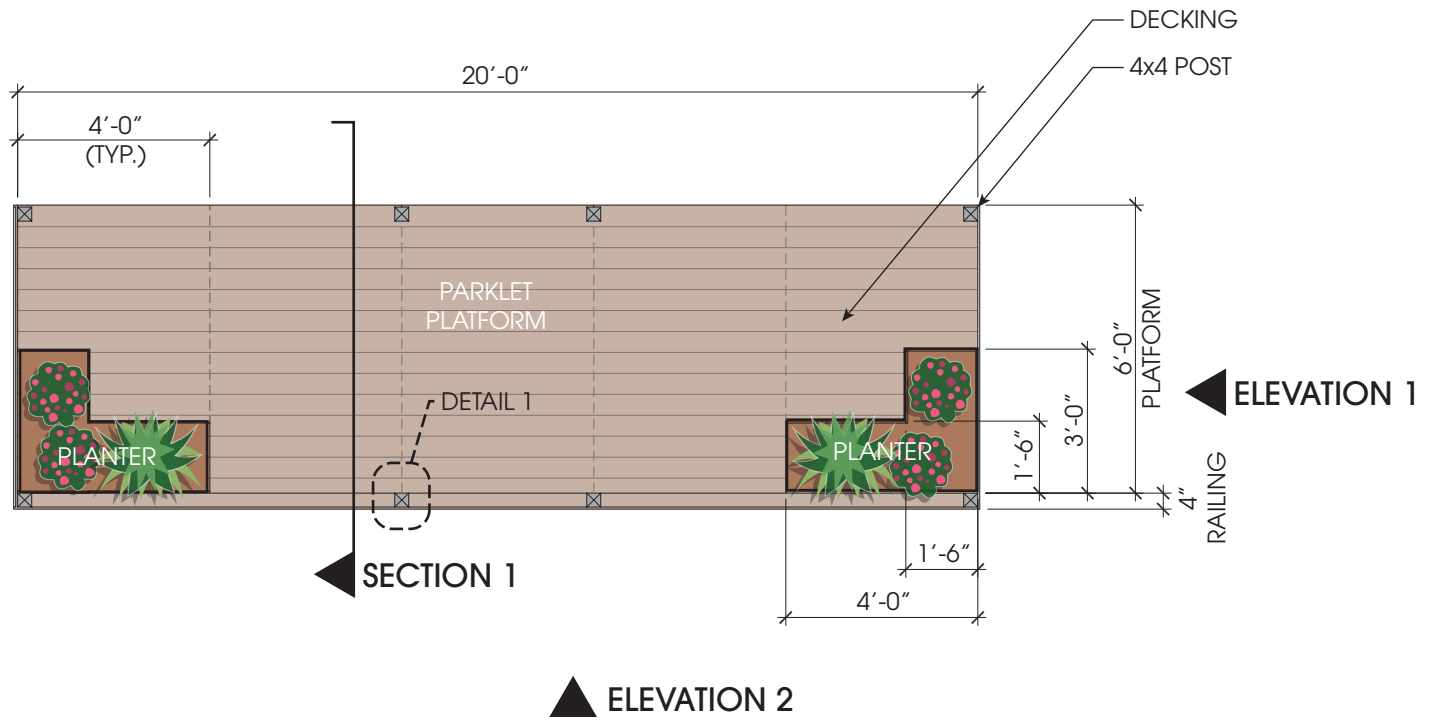
## DRAINAGE AND DECK GAP (TYPICAL)



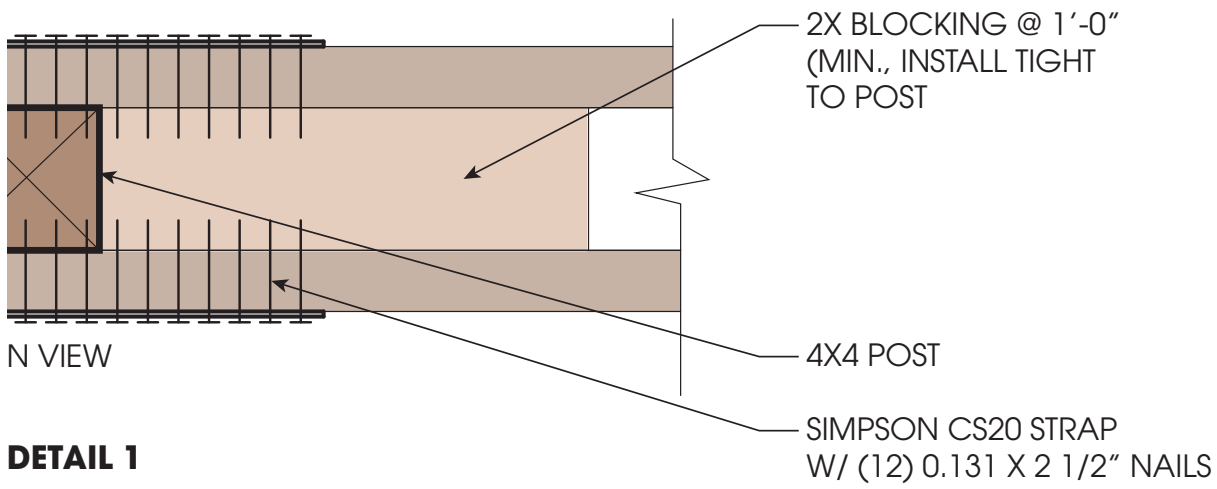
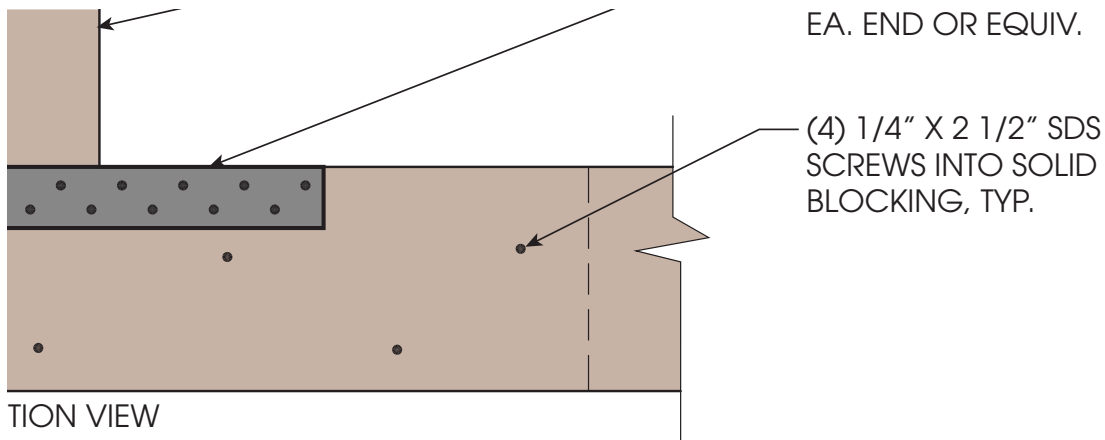
### BASE SITE DESIGN (PARALLEL PARKING)



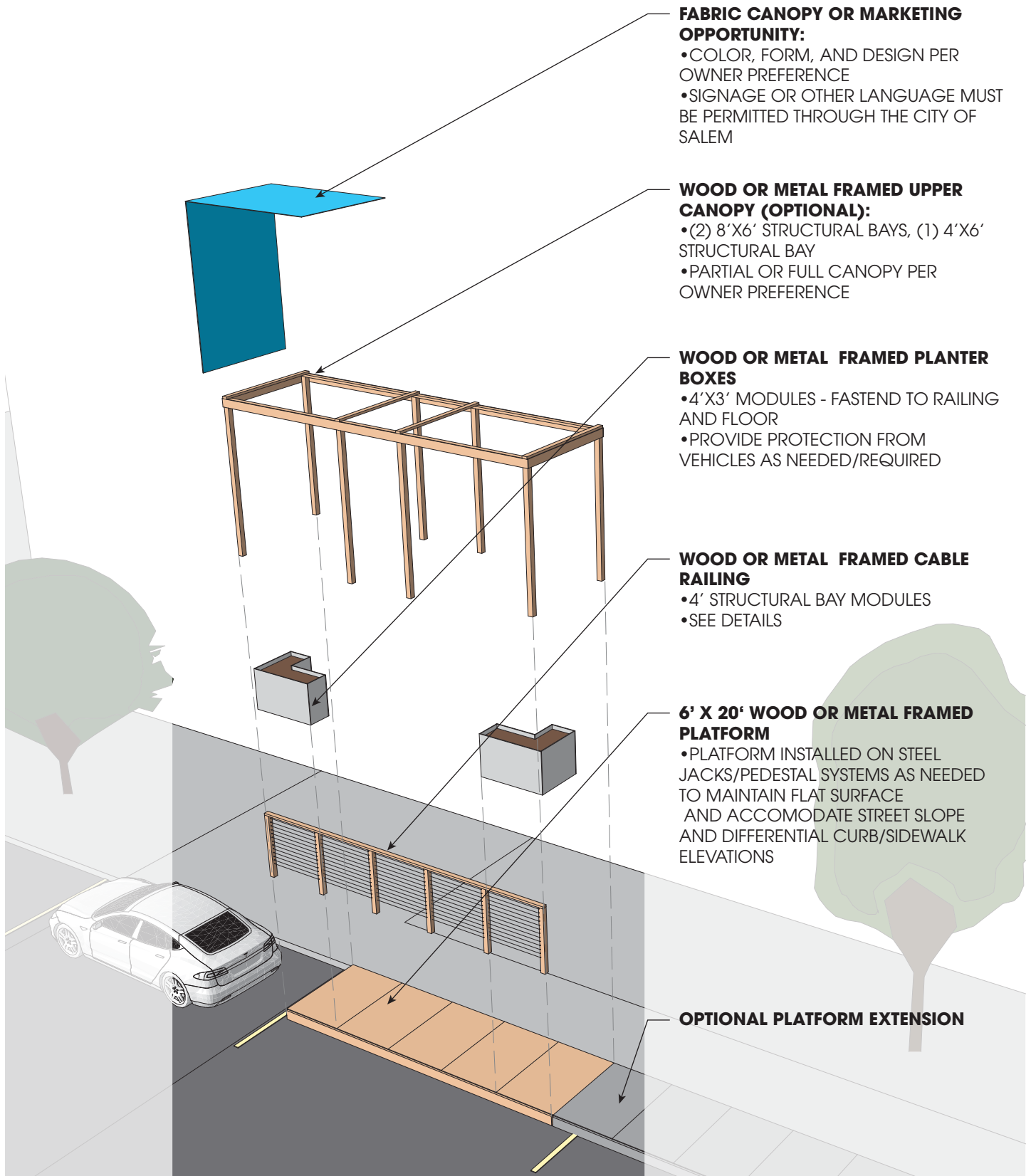
### EXTENDED SITE DESIGN (PARALLEL PARKING)



## PARKLET PLAN



## DETAIL 1



**FABRIC CANOPY OR MARKETING OPPORTUNITY:**

- COLOR, FORM, AND DESIGN PER OWNER PREFERENCE
- SIGNAGE OR OTHER LANGUAGE MUST BE PERMITTED THROUGH THE CITY OF SALEM

**WOOD OR METAL FRAMED UPPER CANOPY (OPTIONAL):**

- (2) 8'X6' STRUCTURAL BAYS, (1) 4'X6' STRUCTURAL BAY
- PARTIAL OR FULL CANOPY PER OWNER PREFERENCE

**WOOD OR METAL FRAMED PLANTER BOXES**

- 4'X3' MODULES - FASTEND TO RAILING AND FLOOR
- PROVIDE PROTECTION FROM VEHICLES AS NEEDED/REQUIRED

**WOOD OR METAL FRAMED CABLE RAILING**

- 4' STRUCTURAL BAY MODULES
- SEE DETAILS

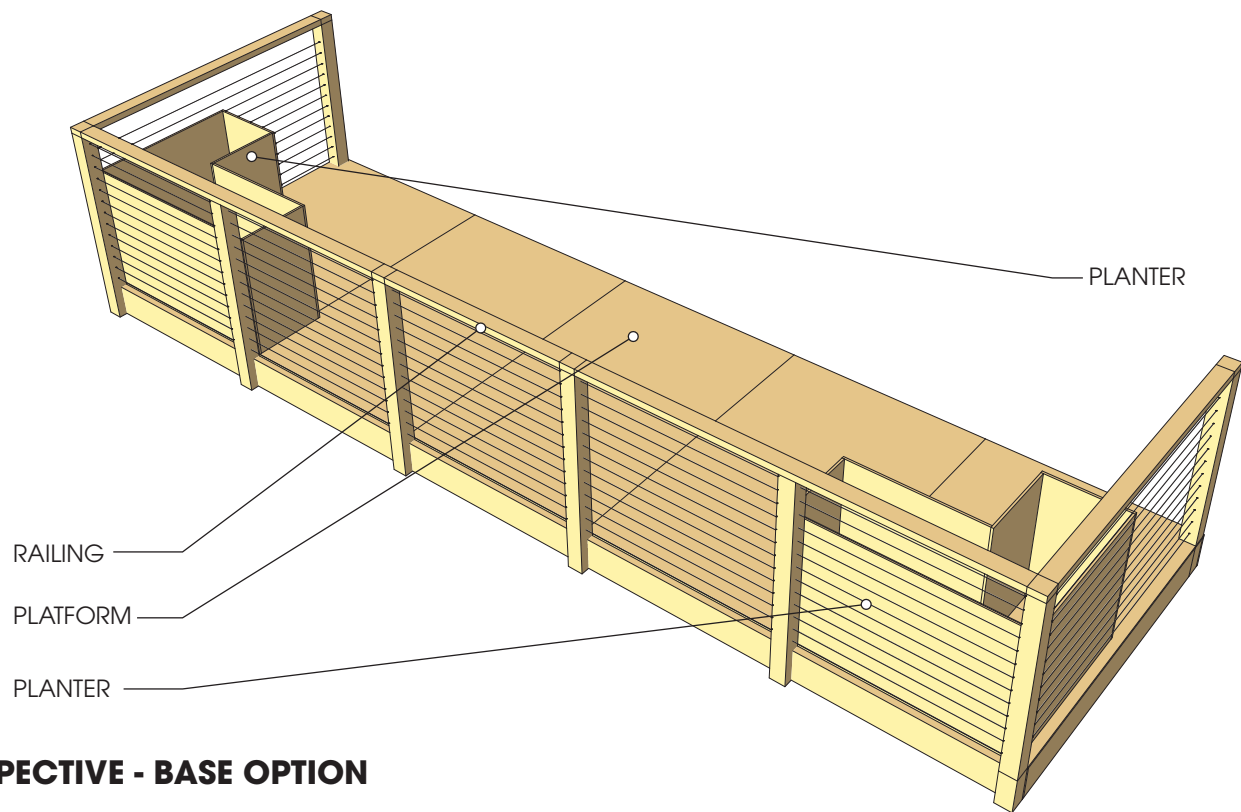
**6' X 20' WOOD OR METAL FRAMED PLATFORM**

- PLATFORM INSTALLED ON STEEL JACKS/PEDESTAL SYSTEMS AS NEEDED TO MAINTAIN FLAT SURFACE AND ACCOMODATE STREET SLOPE AND DIFFERENTIAL CURB/SIDEWALK ELEVATIONS

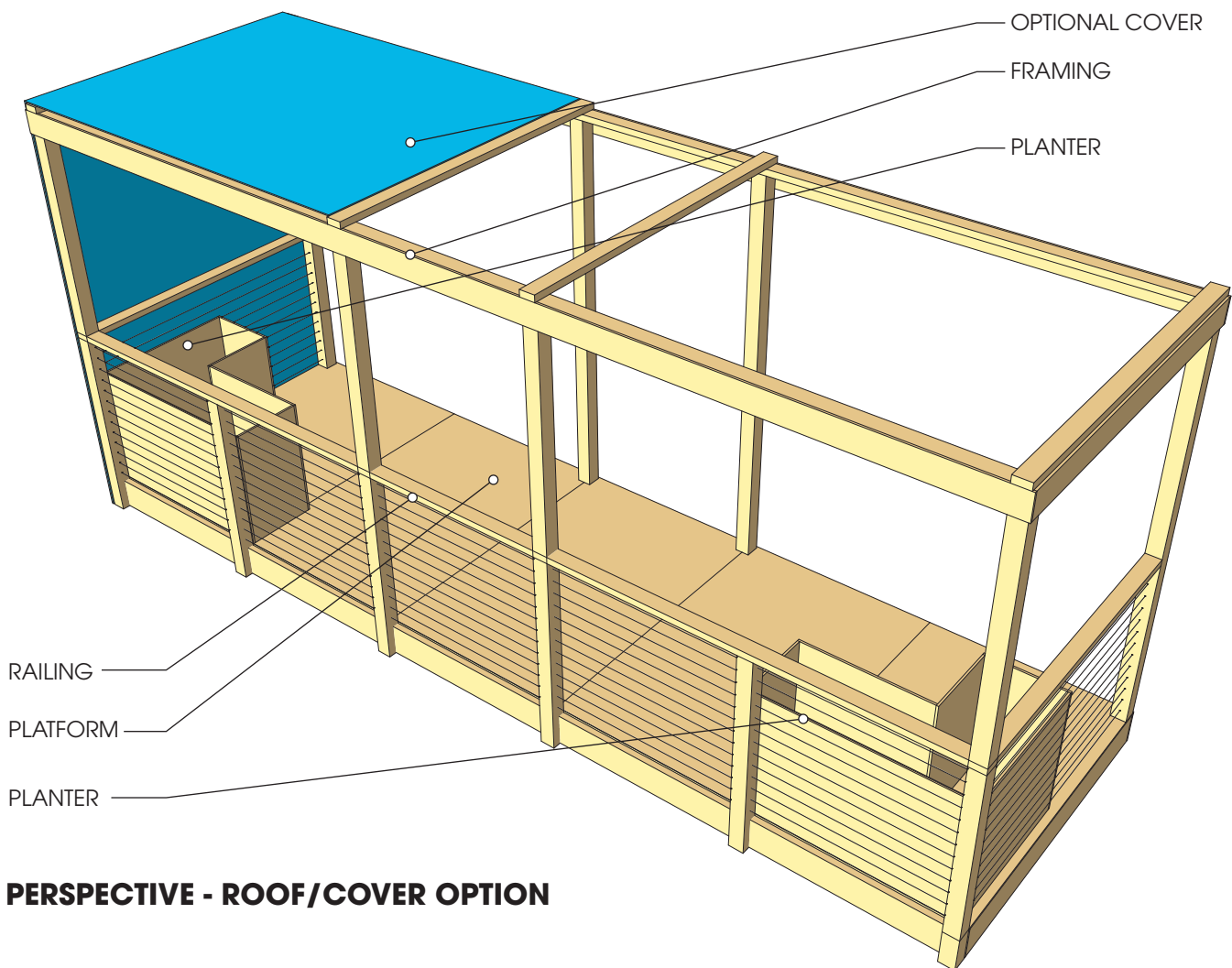
**OPTIONAL PLATFORM EXTENSION**

**EXPLODED VIEW OF COMPONENTS**



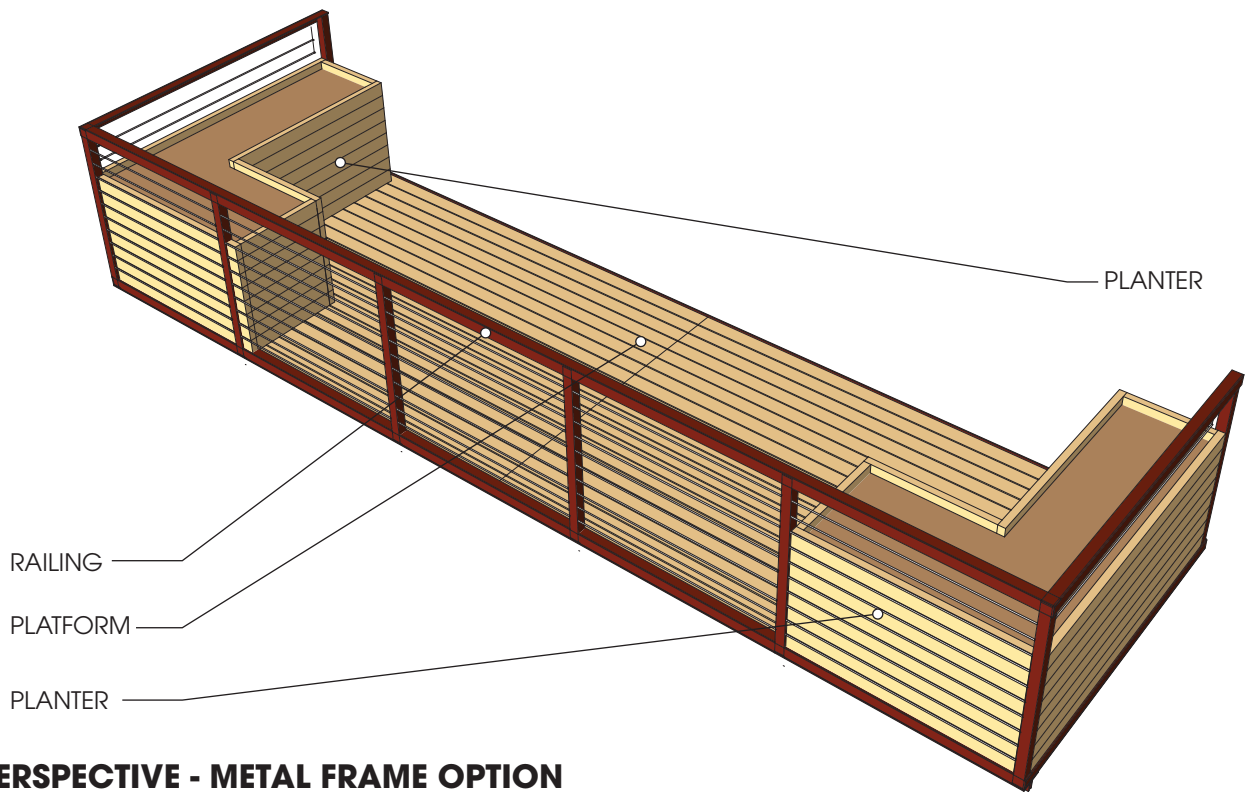


### PERSPECTIVE - BASE OPTION

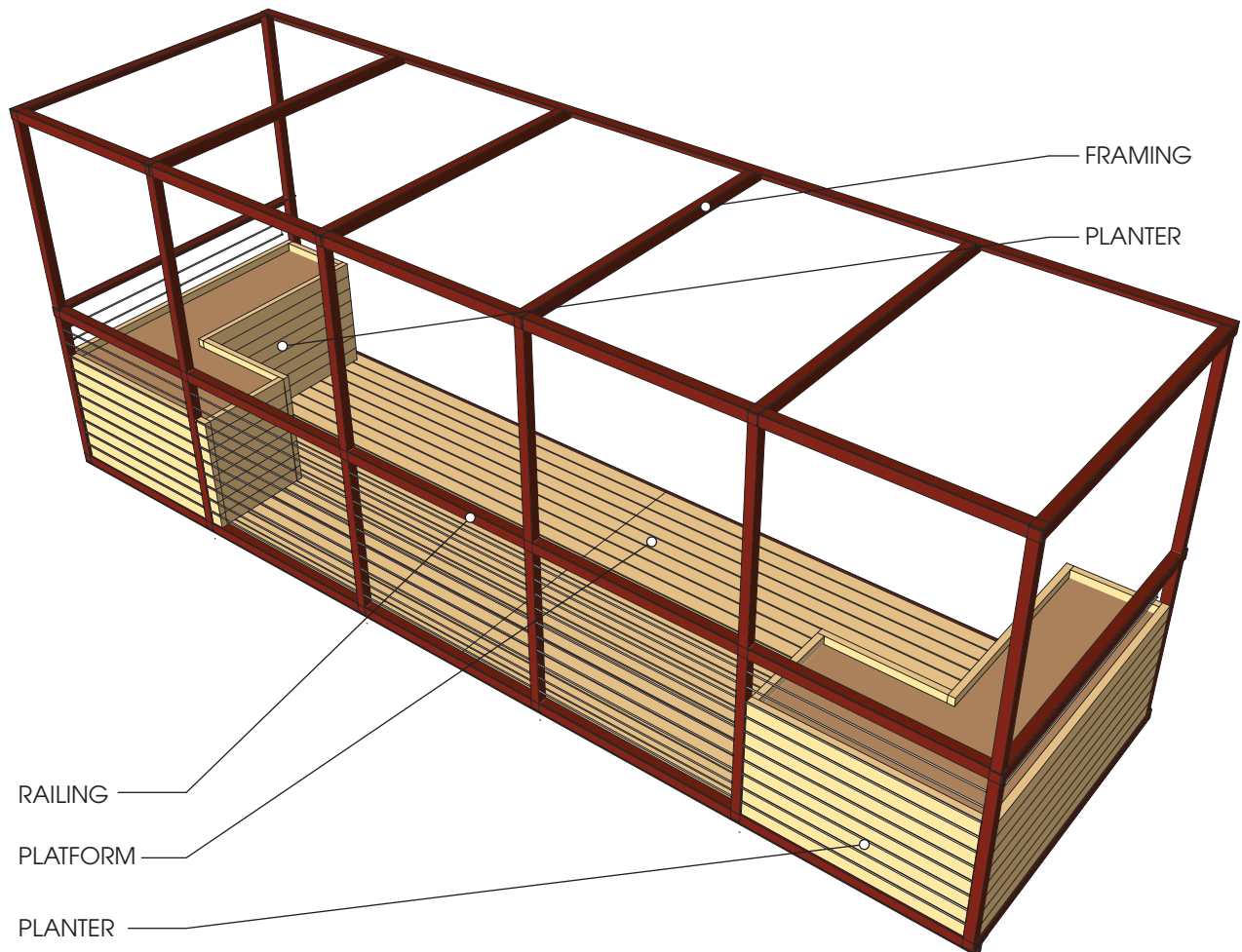


### PERSPECTIVE - ROOF/COVER OPTION

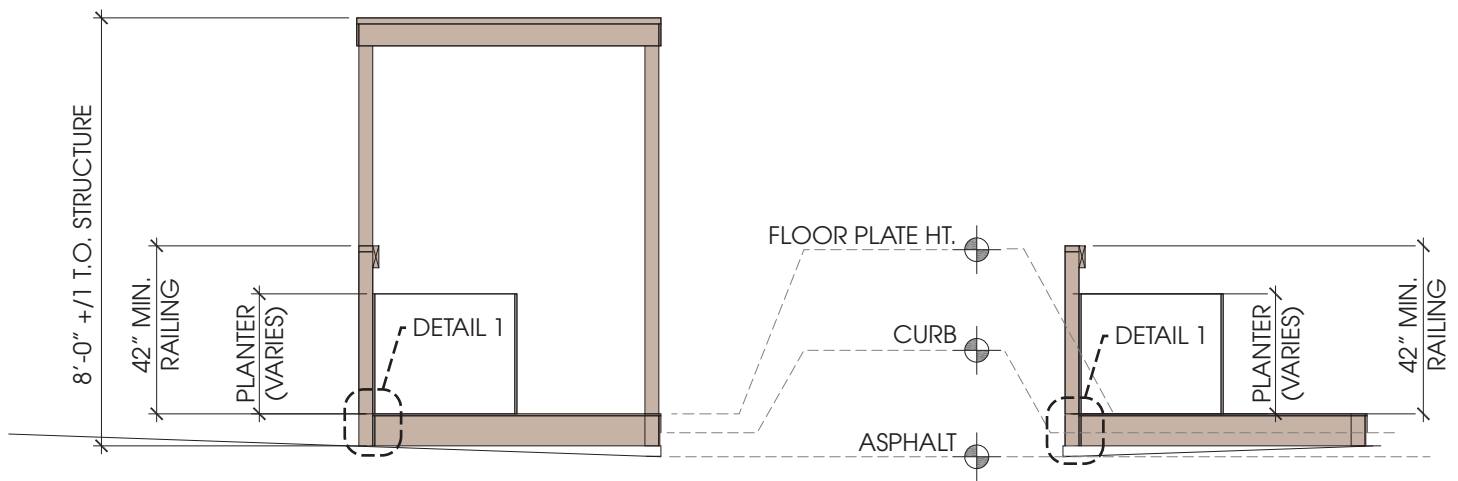




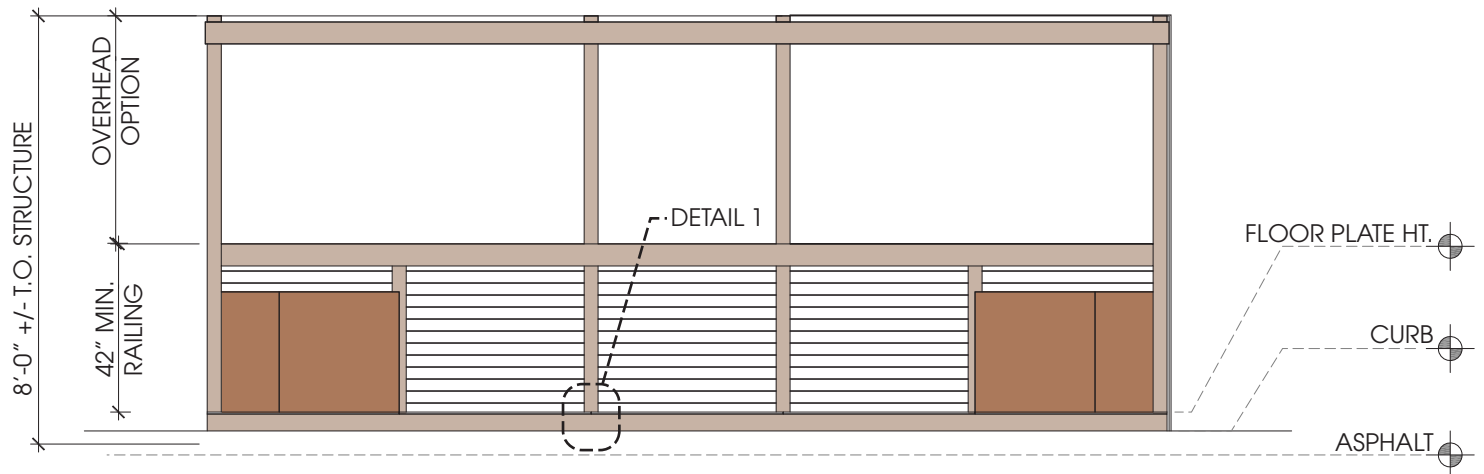
**PERSPECTIVE - METAL FRAME OPTION**



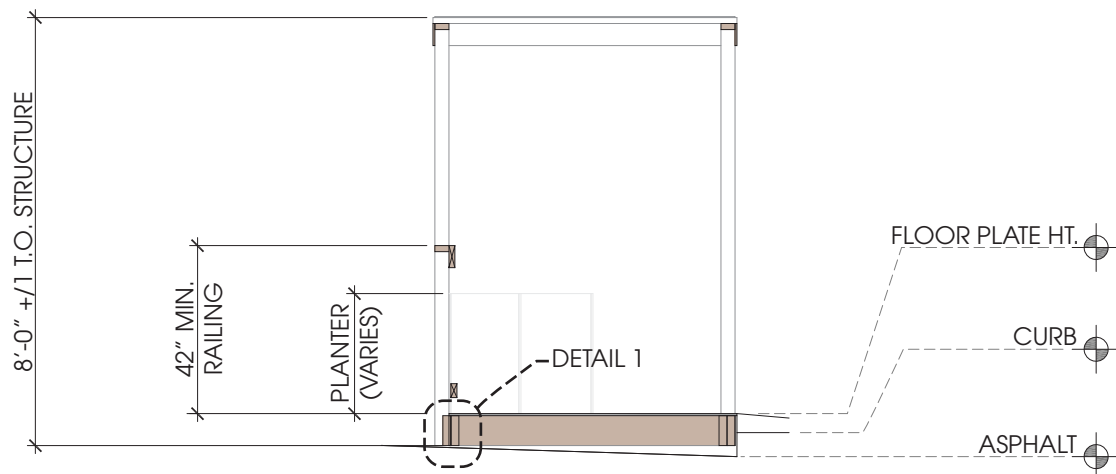
**PERSPECTIVE - METAL FRAME ROOF/COVER OPTION**



**ELEVATION 1 (NTS)**



**ELEVATION 2 (NTS)**



**SECTION 1 (NTS)**

## Conceptual Renderings



**PLATFORM CONCEPT - AERIAL VIEW**



**PLATFORM CONCEPT - STREET VIEW WITH OVERHEAD STRUCTURE OPTION**



## Conceptual Renderings



**PLATFORM CONCEPT - AERIAL VIEW (TWO STALL PARALLEL CONFIGURATION)**



**PLATFORM CONCEPT - STREET VIEW WITH ENCLOSED OVERHEAD STRUCTURE OPTION**

## **Permits**

Permitting of parking construction will be handled through the City of Salem Traffic Engineering Department and facilitated by Urban Renewal.