

REEL 4680 PAGE 172  
MARION COUNTY  
BILL BURGESS, COUNTY CLERK  
12-28-2022 02:20 pm.  
Control Number 727459 \$ 301.00  
Instrument 2022 00049807

✓ After recording, return to:  
City of Salem  
Real Property Services  
350 Commercial St. NE  
Salem, OR 97301

## SOUTH WATERFRONT URBAN RENEWAL PLAN

December 2022

City of Salem

Adopted: September 4, 2007  
Amended: January 22, 2008 – Resolution 08-1 URA  
Amended: January 22, 2008 – Resolution 08-2 URA  
Amended: September 9, 2013 – Resolution 13-12 URA  
Amended: December 12, 2022 – Resolution 22-13 URA

As previously recorded on Reel No. 3544, Page 329  
Instrument 2013 00042546

## LIST OF PARTICIPANTS

### **City Council**

Janet Taylor, Mayor  
Chuck Bennett, Ward 1  
Laura Tesler, Ward 2  
Brad Nanke, Ward 3  
TJ Sullivan, Ward 4  
Kate Tartar, Ward 5  
Bruce Rogers, Ward 6  
Brent DeHart, Ward 7  
Dan Clem, Ward 8

### **Urban Renewal Agency of the City of Salem**

Janet Taylor, Chair  
Dan Clem  
Brent DeHart  
Brad Nanke  
Bruce Rogers  
Laura Tesler  
TJ Sullivan

### **Planning Commission**

Chuck Bennett  
Dan Dorn  
Darr Goss  
Nathan Levin  
James Lewis  
Michael Nelson  
Jim Wiles

### **City of Salem Administration**

Bob Wells, City Manager  
Rick Scott, Urban Development Director  
John Wales, Assistant Urban Development Director

Dan Riordan, Project Manager, Urban Development Department  
Courtney Knox, Project Manager, Urban Development Department  
David Skilton, Project Coordinator, Urban Development Department  
C. Randall Tosh, City Attorney, Legal Department  
Michelle Teed, Assistant City Attorney, Legal Department  
Vickie Hardin Wood, Director, Community Development Department  
Lisa Van de Water, Senior Planner, Community Development Department  
Bryce Bishop, Associate Planner, Community Development Department  
Julie Warncke, Transportation Planning Manager, Public Works Department  
Ralph Lambert, Senior Project Manager, Public Works Department

**Consultant Team**

Jeffrey Tashman, Tashman Johnson LLC  
Elaine Howard Consulting, LLC  
SERA Architects

**Comprehensive Plan Land Use Findings**

Karen Williams, Lane Powell

## TABLE OF CONTENTS

I.	INTRODUCTION	2
II.	GOALS AND OBJECTIVES	5
III.	MAP AND LEGAL DESCRIPTION OF URBAN RENEWAL AREA	7
IV.	OUTLINE OF MAJOR URBAN RENEWAL PROJECT ACTIVITIES	8
V.	URBAN RENEWAL PROJECTS	8
VI.	RELATIONSHIP TO LOCAL OBJECTIVES	12
VII.	PLANNED LAND USES	31
VIII.	PROPERTY ACQUISITION AND DISPOSITION	31
IX.	RELOCATION METHODS	32
X.	TAX INCREMENT FINANCING OF PLAN	32
XI.	FUTURE AMENDMENTS TO PLAN	34

## SOUTH WATERFRONT URBAN RENEWAL PLAN

### I. INTRODUCTION

The South Waterfront Urban Renewal Plan (the Plan) contains goals, objectives and projects for the development of the South Waterfront Urban Renewal Area (the Area). The Area, as shown in Figure 1, encompasses 411 acres, more or less, and includes: parts of Minto Island and the Willamette Slough; the area roughly bounded by the Willamette Slough on the west, the Riverfront Downtown Urban Renewal Area on the north, the easterly line of the Commercial Street right-of-way on the east, and Mission Street on the south; and an area roughly bounded by Mission Street on the north, the westerly line of the alley right-of-way between Liberty and Commercial Streets on the east, the southerly line of the right-of-way of Owens Street on the south, and the easterly line of the Saginaw Street right-of-way and the easterly line of the alley right-of-way between Liberty and Saginaw Streets on the west. **(Reso. No. 13-12 URA)**

In 2006, the City of Salem (City), Boise Cascade Corporation (Boise) and the Strategic Economic Development Corporation (SEDCOR) invited the Urban Land Institute (ULI) to convene an Advisory Services Program Panel (the Panel) to evaluate development opportunities for the Boise site and nearby properties. The Panel was asked to consider possibilities for profitably redeveloping the properties while providing public benefits.

The Panel was convened the week of June 25, 2006 and issued a report in November 2006 which included an overall assessment of the downtown and its real estate development environment; an evaluation of the site's opportunities and constraints; a suggested concept for redevelopment (the types and amounts of residential, retail and commercial development, parking, open space and public areas), and implementation recommendations. The Panel's report recommended a change in the zoning and use of the site from industrial to mixed (commercial/residential/public) use and a strategy of cooperation between Boise and the City to achieve optimal site redevelopment. The Panel also recommended that the City adopt an urban renewal plan to finance public improvements.

The City is proceeding with implementation of some of the ULI recommendations. As a part of that process, the City Council commissioned a Feasibility Study for an urban renewal plan for the "South Waterfront" area to include the Boise property and its vicinity. The Feasibility Study was presented to the City Council on March 19, 2007. As part of that discussion, the City Council directed staff to prepare an Urban Renewal Plan and Report for most but not all of the area studied and added the area on Minto Island in Boise's ownership. The boundary was confirmed by Council on April 23, 2007. On July 9, 2007, the City Council further directed staff to include the northern portion of Minto Island which is owned by the Salem Audubon Society into the urban renewal area. This Urban Renewal Plan was developed in response to the Council's direction.

The Plan will facilitate and encourage improvements in the Area, including changes to the transportation and pedestrian systems, extension of riverfront access, daylighting of Pringle Creek, additions to the pedestrian and bicycle system on Minto Island, and provision of streetscape improvements and bike lanes. It will also allow for incentives to facilitate the Area's redevelopment in alignment with the goals and objectives in the Plan, and in accordance with the City's Comprehensive Plan and land use regulations.

## SOUTH WATERFRONT URBAN RENEWAL PLAN

The purpose of the Plan is to use the tools provided by urban renewal (ORS Chapter 457) to overcome barriers to the development of the Area and create economic opportunities that will benefit local and regional residents. These tools include tax increment financing (see Section X), which means that the property taxes resulting from growth in property value within the Area can be used to finance improvement projects and programs, and the acquisition and sale of land for redevelopment as part of a public/private development partnership as described in the Plan.

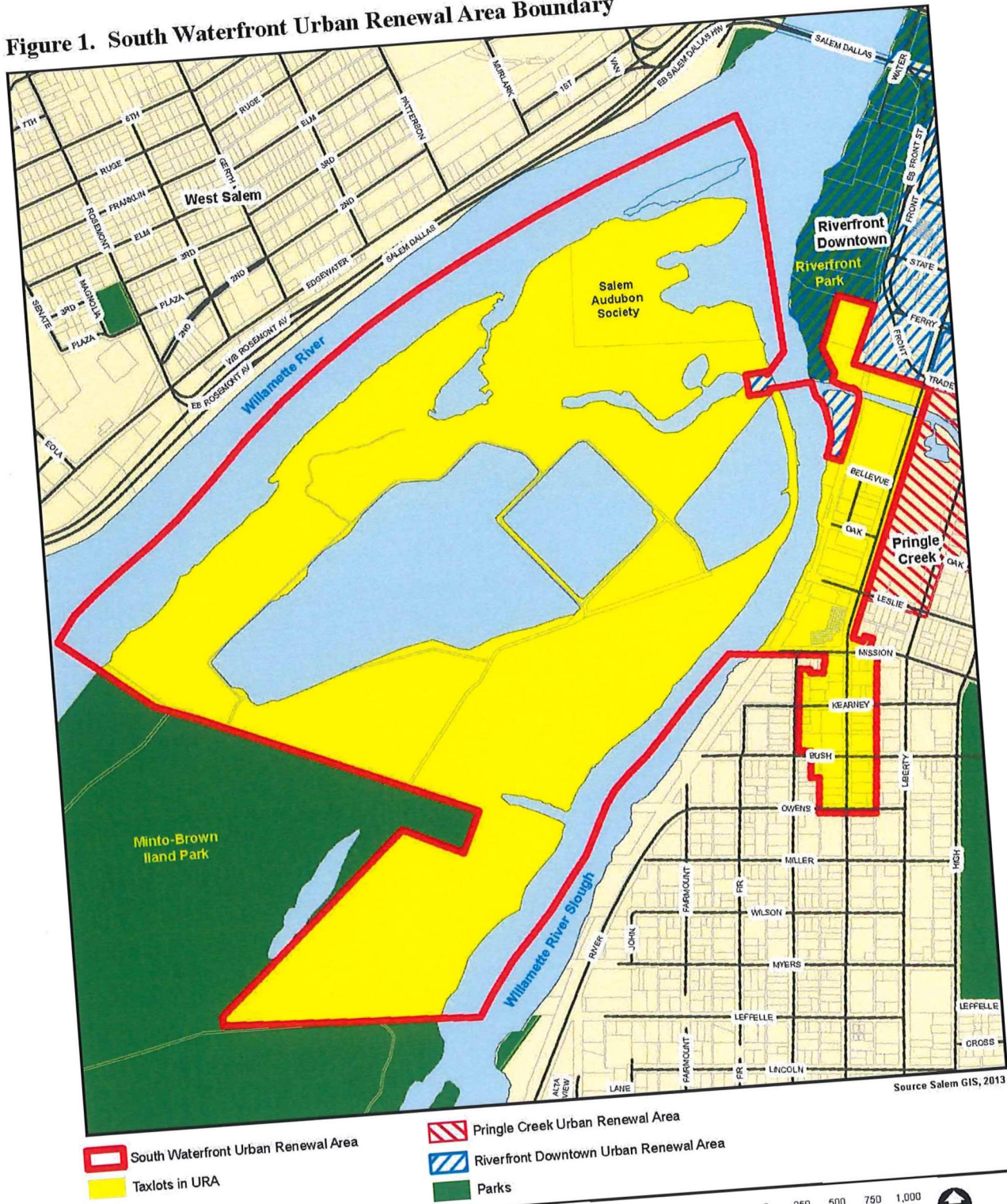
The Plan is administered by Urban Renewal Agency (the Agency) for the City of Salem, Oregon. The Agency was activated by the City Council of the City of Salem by Resolution No. 7986, adopted on October 23, 1961. Two other urban renewal areas are adjacent to the South Waterfront Urban Renewal Area -- the Riverfront Downtown Urban Renewal Area and the Pringle Creek Urban Renewal Area.

As required by ORS 457.085 (3), the Plan is accompanied by the South Waterfront Urban Renewal Report (the Report), which is intended to provide public information and a basis for the findings made by the City Council as part of its approval of the Plan.



# SOUTH WATERFRONT URBAN RENEWAL PLAN

**Figure 1. South Waterfront Urban Renewal Area Boundary**



Urban Renewal Area  
 South Waterfront Urban Renewal Area

**(Resolution No. 13-12 URA)**

## SOUTH WATERFRONT URBAN RENEWAL PLAN

### **II. GOALS AND OBJECTIVES**

The goals of the Plan establish its basic intent and purpose. Accompanying each goal are objectives, which generally describe how the Agency intends to achieve the goals. The urban renewal projects identified in Chapter V of the Plan are the specific means of meeting the objectives.

**Goal 1: LAND USE: EMPLOYMENT, BUSINESS ACTIVITY AND RESIDENTIAL USES**

**Promote a mix of retail, commercial, and residential uses to increase employment, attract a broader range of businesses to the Area, and support existing commercial development in the Area.**

Objectives:

1A: Work with property owners to promote beneficial development of properties within the Area.

1B: Encourage development of pedestrian and bicycle-oriented uses, public spaces, and infrastructure improvements. Develop a year-round pedestrian environment that encourages use and patronage of the Area's businesses, provides opportunity for new businesses to locate in the Area, and promotes downtown living.

1C: Increase the total supply of housing adjoining the retail core which will in turn support restaurants and other businesses that attract residents and visitors to the downtown area.

1D: Promote development of a variety of housing locations, including locations above retail and office space, to increase the range of housing opportunities in the Area and to provide housing which is in walking distance of retail, personal and business services, and employment opportunities. Orient the housing to take advantage of the views of the Willamette River and Pringle Creek.

1E: Promote the development of higher density housing and a variety of housing types: loft, apartment, condominium, and other high density alternatives to serve a variety of income levels.

1F: Encourage the development of new housing through the use of available measures including local, state and federal incentives.

1G: Promote mixed-use development including office space above ground floor commercial service and retail space to attract a broad range of businesses, increase employment density and support the existing downtown commercial community.

1H: Promote the rehabilitation and/or conversion of substandard and/or historic buildings to support mixed-use development.



## SOUTH WATERFRONT URBAN RENEWAL PLAN

1I: Support the existing downtown uses and future uses on this site by providing parking facilities.

1J: Create financial programs offering loans or grants to new or existing businesses that may be used to improve, upgrade, update, or revitalize the buildings or other structures associated with their business.

1K: Encourage the development of residential, office, and transit supportive uses such as dry cleaners, markets, pharmacies, restaurants.

### **Goal 2: TRAFFIC AND TRANSPORTATION**

**Implement transportation improvements to increase access to and mitigate traffic impacts within the Area.**

#### Objectives:

2A: Provide transportation and infrastructure improvements to support the development of mixed-uses.

2B: Construct street improvements consistent with City standards.

2C: Provide sidewalks and streetscape improvements that promote mixed-use developments, access and safety.

2D: Support the location of a commuter rail station with pedestrian connections to the Area with at least partial funding for placement of a future station in the Area.

2E: Extend the transportation network into the Boise Cascade site.

2F: Extend the bike lane network through the Area.

### **Goal 3: PEDESTRIAN ENVIRONMENT/RIVERFRONT/PUBLIC SPACE CONNECTIONS**

**Enhance the pedestrian environment on streets, in public parks and greenspaces, and in other public gathering spaces. Provide opportunities for public access to the Willamette River, and connections to the mixed-use development and public spaces adjacent to the Willamette River. Create an environment that is safe and attractive for pedestrians.**

## SOUTH WATERFRONT URBAN RENEWAL PLAN

### Objectives:

- 3A: Participate in the development of the Willamette Riverfront to provide an opportunity for a mixture of commercial, residential, public and other uses compatible with the Riverfront, and facilitate safe pedestrian and bicycle movement along the Riverfront with linkages to all adjoining areas.
- 3B: Develop a system of streetscape improvements to create a continuous and consistent pedestrian environment throughout the Area. Improvements could include public art, landscaping, sidewalk surfacing, signing, street furniture, weather protection and related improvements.
- 3C: Construct a recreational path system on Minto Island to allow increased use and enjoyment of the Island, including creation or improvement of paths that take advantage of passive recreation opportunities, scenic benefits, and efficient connections to existing bicycle and pedestrian routes and trails.
- 3D: Develop a multi-use path along Pringle Creek within the Area which may provide additional connectivity to existing paths and park areas in or near downtown, and which may also benefit from the daylighting of Pringle Creek.
- 3E: Develop pedestrian connections between the Willamette River and Pringle Creek.
- 3F: Extend the Willamette River pathway into the Area creating additional attractive and safe trails for recreational use.
- 3G: Create a public plaza to serve as a gathering place for the community, which may be adjacent to or otherwise accessible from existing downtown riverfront amenities.
- 3H: Provide both visual and actual connections from future development to the Willamette Riverfront.
- 3I: Provide a view corridor to the Willamette River from the park area north of the Civic Center, and from Commercial Street.

### **III. MAP AND LEGAL DESCRIPTION OF URBAN RENEWAL AREA**

Figure 1 shows the Area boundaries. The legal description of the Area is attached as Appendix A. Appendix B shows the map from which the legal description was drawn.

## SOUTH WATERFRONT URBAN RENEWAL PLAN

### **IV. OUTLINE OF MAJOR URBAN RENEWAL PROJECT ACTIVITIES**

An outline of major urban renewal project activities is as follows:

- Daylighting of Pringle Creek to provide greater public access to the creek and another connection the Willamette River.
- Pedestrian and bicycle improvements, such as paths, bridges, and crossings, to provide safe access to the Willamette riverfront, Pringle Creek and Minto Island, and Commercial Street, and connect the Area to the Salem downtown.
- Transportation improvements, including but not limited to street realignments, traffic signals, sidewalks, and bicycle lanes to allow for increased circulation to, from, and within the Area.
- Public Plaza to serve as a community gathering place.
- Streetscape improvements to enhance the appearance, safety, and usability of the area.
- Transit improvements, including but not limited to a future commuter rail facility.
- Loan or grant program for retail, commercial or residential properties.
- Environmental remediation matching funds.
- LEED certification funds.

### **V. URBAN RENEWAL PROJECTS**

Urban renewal projects authorized by the Plan consist of public improvements and other projects that are described below and as shown in Figure 2.

#### **A. Capital Projects**

Capital projects authorized under the Plan include transportation improvements which will upgrade and expand existing roadways to increase access into, out of and within the Area, facilitate the development of vacant and underutilized lands and accommodate increased levels of traffic as future development occurs. To promote neighborhood livability and increase multimodal connectivity, transportation projects may also include, but are not limited to, sidewalks and streetscape improvements.

As shown in the Report, urban renewal funds may be combined with existing and other future sources of funding to finance project costs.

Capital projects may include the following:

#### **1. Pringle Creek Access Improvements**

This project would create a path along Pringle Creek under Commercial Street, and could include but is not limited to creek bank restoration, property acquisition, demolition for creek daylighting, habitat restoration and landscaping. This project would greatly improve multi-modal connections between Bush Park, Riverfront Park, and Willamette University using the existing path system. This project will also provide a way for pedestrians to safely cross the existing railroad tracks in connection with improved pedestrian access along Pringle Creek. At a minimum, pedestrian safety crossing treatments will be required but other improvements may be included.

## SOUTH WATERFRONT URBAN RENEWAL PLAN

### 2. Minto Island Property Acquisition and Multi-Use Path

This project includes acquisition of land for passive and active recreation use including, but not limited to, construction of a multi-use pathway system complementary with existing and planned park improvements on the Island. Anticipated work includes, but is not limited to, grading, paving, surveying, erosion control, excavation, and other activities generally associated with the construction of trails and pathways, the improvement of wildlife habitat, and the provision of scenic views.

### 3. Multi-Use Path Willamette Riverfront

This project will provide for a pathway along the Willamette Riverfront in this Area to connect to the existing riverfront pathway. Additional connections to this pathway may be undertaken through adjacent urban renewal areas or through other available funding sources.

### 4. Street Connection to Boise Site and Traffic Signal

This project would create a signalized intersection on Commercial Street to improve traffic circulation in and around the Area. The likely location would be to realign Bellevue Street so it enters Commercial Street opposite the Civic Center driveway. This project may include, but is not limited to, property acquisition, creation of improvements to multi-modal access or right of way.

### 5. State Street Extension within the Area

This project would extend State Street south from the boundary of the Riverfront Downtown Urban Renewal Area into the Area to allow for a transportation turnaround, parking, enhanced access to the southern portion of Riverfront Park, and additional commercial development along the newly created corridor as proposed by the ULI report.

### 6. Public Plaza, State Street Terminus

This project would provide funding to assist in the development of a public plaza within the Area, at the proposed terminus of a future State Street extension project. The gathering place would provide an outdoor social gathering spot for the Area's new residents and for the community as a whole.

### 7. Commercial Street Bicycle Lanes

This project would provide bike lanes along Commercial Street from Mission to Owens. It would also provide on-street parking improvements to accommodate the addition of bike lanes in the right of way.

## SOUTH WATERFRONT URBAN RENEWAL PLAN

### 8. Streetscape Improvements

This project may include, but is not limited to, design and implementation of accent paving, sidewalk reconstruction, undergrounding of utilities, lighting, street trees, outdoor furnishings, transit pullouts, and other related activities within the public right of way or on adjacent private property to promote pedestrian circulation and public transportation use in the renewal area.

Section V.A.8. Amended: January 22, 2008

Resolution 08-1 URA: “undergrounding of utilities”

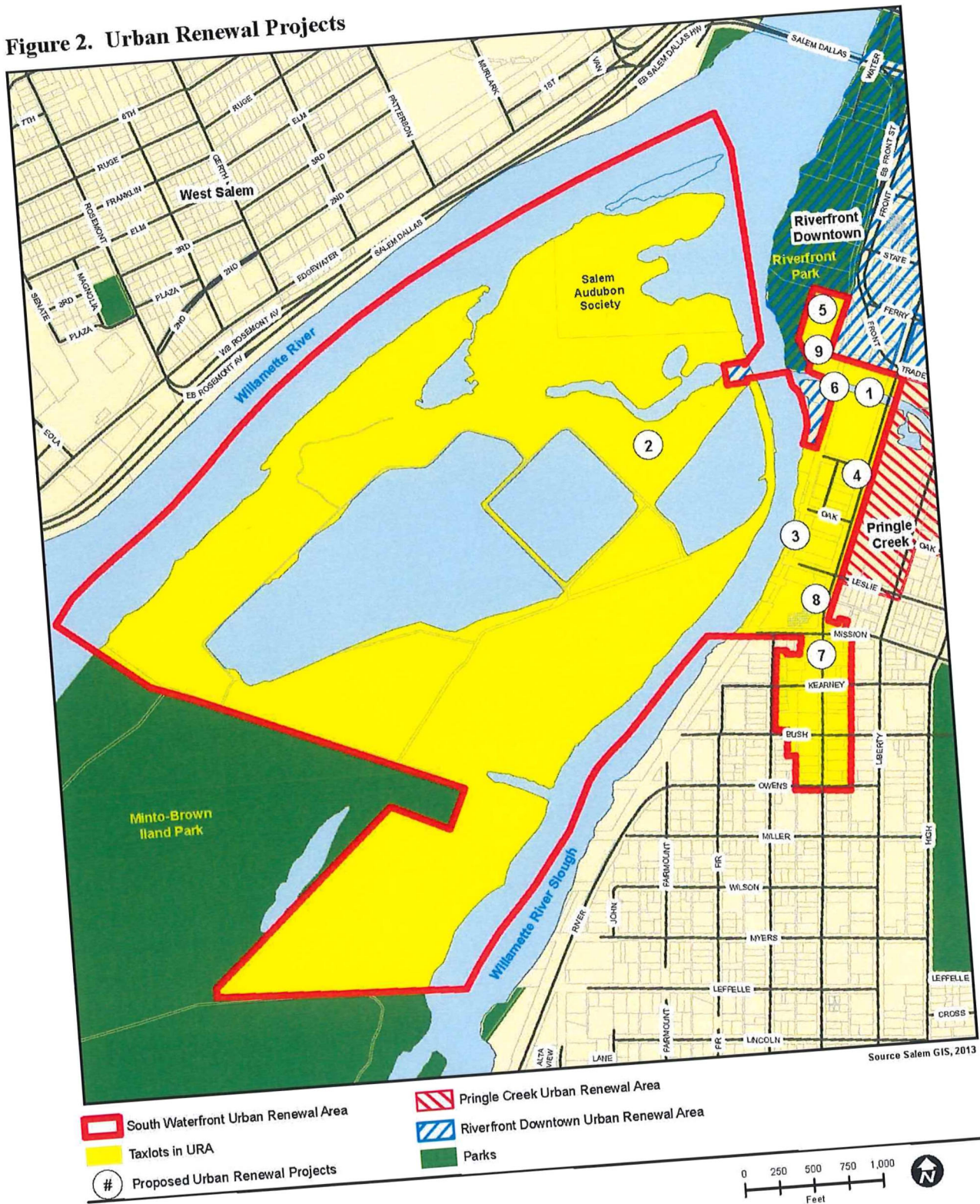
### 9. General Transit Improvements Related to Future Commuter Rail

This project may include, but is not limited to funding for: a feasibility study on a future commuter rail station; design and predevelopment activities for the station and related improvements; and/or the construction of the station and related improvements. The commuter rail station would provide a second passenger depot for Salem and would help connect the Area and the community to other places with passenger rail service.



# SOUTH WATERFRONT URBAN RENEWAL PLAN

**Figure 2. Urban Renewal Projects**



Projects  
 South Waterfront Urban Renewal Area  
 (Resolution No. 13-12 URA)

## SOUTH WATERFRONT URBAN RENEWAL PLAN

### **B. Assistance to Property Owners/Lessees for Rehabilitation, Redevelopment or Development**

The Plan authorizes assistance to property and/or business owners, in making capital improvements, environmental remediation matching funds and LEED certification funds to property within the Area which support the goals and objectives of the Plan. Specific program rules and regulations for administration will be developed after the adoption of the Plan to ensure that urban renewal funds are used properly and for the agreed-upon purposes.

9. Rehabilitation and Redevelopment Fund

Eligible programs may include:

- Loans and/or grants to assist with planning and pre-development activities as well as property development, rehabilitation or redevelopment and other improvements. Property to be improved must be in or planned for retail, commercial, or residential use. Loans may be at or below market rates, and assistance can include direct loans or guarantees of loans made by third parties.
- Technical assistance, in the form of site studies, market studies, environmental studies and impact assessments, feasibility analyses, engineering and design and other activities directly related to development of property in the Area.

10. Environmental Remediation Matching Fund

This fund would encourage and assist in environmental remediation in the Area.

11. LEED Certification Fund

This fund would encourage LEED building standards by assisting property owners with resources to complete the certification process.

### **VI. RELATIONSHIP TO LOCAL OBJECTIVES**

The Plan reflects the regional planning and development objectives contained in the Salem Area Comprehensive Plan (SACP), City of Salem Revised Code (SRC), and Transportation System Plan (TSP). Adopted in October 1992 and most recently revised in April 2004, the SACP identifies goals and policy objectives that support planning activities which will attract private investment to the area and create new economic opportunities for local residents. The most specific objectives to which the Plan responds are those contained in the Comprehensive Plan, Transportation System Plan and Master Plan.

#### **A. Salem Area Comprehensive Plan Goals and Policies**

The intent of the Salem Area Comprehensive Plan is to project a goal - the most desirable pattern of land use - in the Salem area. To ensure that the anticipated urban land use needs are met, the Salem Area Comprehensive Plan Map demonstrates a commitment that land for a wide variety of uses will be available at

## SOUTH WATERFRONT URBAN RENEWAL PLAN

appropriate locations as needed. In order to achieve this commitment, the Salem Area Comprehensive Plan utilizes an approach which provides for the phased provision of land over time through annexation and rezoning in response to demand for specific land uses. In using this approach, plans, plan policies, and implementing mechanisms are developed and administered that are responsive to changing and evolving land demands yet recognizing existing zoning. The intent of this approach is to retain flexibility in the plan in order to remain responsive to changing conditions, and yet recognize the legitimacy of the existing zoning and the dynamic process of plan implementation.

The land use pattern that is shown on the Comprehensive Plan Map recognizes the zoning that has developed over time, with general designations of the land uses that are expected to be developed, as a result of: (1) demand, (2) the plan policies and intent statements, and (3) implementing regulations and processes. This Plan recognizes that the land use and zoning are expected to change during the time span of the Plan as conditions change.

The Urban Renewal Plan is consistent with this policy provision because it provides for a long-term financial and development plan to address changes in land use. By anticipating 20-year phasing of approximately 86,000 square feet of office space; hotel, restaurant, retail, and other commercial spaces; and 269 units of housing, the Plan is designed to provide financing that will allow the Agency to create financial incentives or provide infrastructure that will encourage private sector development in a way that best addresses demand, plan policies and intent statements, and processes and procedures prescribed by the City and the Agency.

As Salem has grown and changed over time, the land use pattern along the downtown riverfront is transitioning from industrial uses to a vibrant mixture of commercial, retail, office, residential, and recreation uses. For example, Riverfront Park was a former industrial site. This transition has also influenced the land use pattern of the south waterfront area. With the closing of the Boise Cascade facility and the property's sale, approximately 323 acres of land within the south waterfront urban renewal area are in a position to transition to new use.

In recognition of the importance of the redevelopment of Boise Cascade's riverfront properties, the Urban Land Institute (ULI) was invited in 2006 to conduct a study to consider the possibilities for profitably redeveloping the Boise Cascade site. One of the study's key recommendations is that redevelopment of the Boise Cascade site will require a mix of uses.

Because the comprehensive plan and zoning designations that currently apply to the site do not allow for its redevelopment consistent with the land use pattern called for within the recommendations of the ULI study, they will need to be changed. The City has begun a process to change the comprehensive plan and zoning designation of the site to reflect the findings of the ULI study and recognize the changing character of the downtown and its riverfront. Changing the existing comprehensive plan and zoning for the property to respond to changing conditions and land use demands is consistent with the phased

## SOUTH WATERFRONT URBAN RENEWAL PLAN

urbanization and rezoning over time approach utilized by the Salem Area Comprehensive Plan.

Chapter IV of the SACP identifies Goals and Policies pertaining to the City of Salem's long-term planning and development objectives. Of particular relevance to the Plan, and discussed in detail below, are goals and policy directives contained in the following sections of SACP Chapter IV: (B) General Development; (C) Urban Growth; (D) Growth Management; (E) Residential Development; (F) Mixed-use Development; (G) Commercial Development; (J) Transportation; (K) Open Space, Parks and Recreation; (N) Natural and Historic Areas; Natural Resources and Hazards; and (O) Willamette River Greenway.

### 1. General Development (SACP, Chapter IV, Goal B)

Goal: To insure that future decisions concerning the use of land within the Salem urban area are consistent with State Land Use Goals.

#### Policy 3 - Economic Growth

Economic growth which improves and strengthens the economic base of the Salem urban area should be encouraged.

The Plan is consistent with this policy because it provides for the redevelopment of a large parcel of property that is underutilized, limiting the economic potential of the Plan Area. Effective land use will create employment opportunities, as well as increased property tax revenues and the improved long-term stability of the property tax base.

### 2. Urban Growth (SACP, Chapter IV, Goal C)

Goal: To ensure that the rate, amount, type, location and cost of development will preserve or enhance the City's quality of life and promote the City's efficient delivery of services.

#### Policy 4 - Infill

Development of land with existing urban services shall be encouraged before the conversion of urbanizable lands to urban uses.

The Plan is consistent with this Policy because the property within the Urban Renewal Area that will be redeveloped is presently well served with urban services such as transportation and transit services. Development of this Urban Renewal Area will encourage development within the Area that has already been converted to urban uses.

### 3. Growth Management (SACP, Chapter IV, Goal D)

Goal: To manage growth in the Salem urban area through cooperative efforts of the City of Salem and Marion and Polk Counties, to insure the quality of life of present and future residents of the area, and to contain urban development and to preserve adjacent farm lands.

#### Policy 6 - Infill Development

## SOUTH WATERFRONT URBAN RENEWAL PLAN

New developments shall make maximum use of available land areas with minimal environmental disturbance and be located and designed to minimize such public costs as extension of sewer and water services, schools, parks, and transportation facilities.

### Policy 9 - Infill on Facilities

New development shall be encouraged to locate in areas where facilities are already available and in areas which require the least public costs to provide needed facilities and services.

The Plan is consistent with this Policy because the property within the Urban Renewal Area that will be redeveloped is already well provided with urban services such as water, sewer, power, transportation, and transit services. Development of this Urban Renewal Area will encourage development within the Area that has already been converted to urban uses. Also, many of the properties in the Urban Renewal Area have existing access to needed facilities and services, which will encourage timely redevelopment.

### 4. Residential Development (SACP, Chapter IV, Goal E)

Goal: To promote a variety of housing opportunities for all income levels and an adequate supply of developable land to support such housing.

In meeting this goal, residential development shall:

- a. Encourage the efficient use of developable residential land;
- b. Provide housing opportunities for Salem's diverse population; and
- c. Encourage residential development that maximizes investment in public services.

### Policy 3 - Infill Development

City codes and ordinances shall encourage the development of passed-over or underutilized land to promote the efficient use of residential land and encourage the stability of neighborhoods.

### Policy 6 - Multi-Family Housing

Multi-family housing shall be located in areas proximate to existing or planned transportation corridors, public facilities and services:

- a. To encourage the efficient use of residential land and public facilities, development regulations shall require minimum densities for multiple family development zones;
- b. Development regulations shall promote a range of densities that encourage a variety of housing types;
- c. Multiple family developments should be located in areas that provide walking, auto or transit connections to:



## SOUTH WATERFRONT URBAN RENEWAL PLAN

- (1) Employment centers;
- (2) Shopping areas;
- (3) Transit service;
- (4) Parks;
- (5) Public buildings.

### Policy 9 - Alternative Housing Patterns

#### Residential Development Patterns

Subdivision and zoning regulations shall provide opportunities for increased housing densities, alternative housing patterns, and reduced development costs. Development regulations shall promote residential development patterns that encourage:

- a. The use of all modes of transportation;
- b. Reduction in vehicle miles traveled and length of auto trips; and
- c. Efficiency in providing public services.

These residential development policies and goals will be facilitated by the Plan because the Plan will provide the financial resources necessary to allow the Agency to assist in redevelopment of an underutilized site into a mixed-use neighborhood comprised of housing, retail, office, commercial, services, parking, and open spaces. This will provide the density, mix of uses and housing stock, and amenities that are the outcomes described in these policies.

### Policy 11 - Urban Design

Design Standards shall be implemented to improve the quality of life of Salem's residents and promote neighborhood stability and compatibility.

The Plan is consistent with this policy because the Agency's use of tax increment funding will allow the Agency to negotiate incentive-based design features that are not likely to be possible through zoning alone.

#### 5. Mixed-use Development (SACP, Chapter IV, Goal F)

Goal: To provide a mixture of complementary land uses that may include housing, retail, offices, services, industrial and civic uses, to create economic and social vitality.

## SOUTH WATERFRONT URBAN RENEWAL PLAN

### Policy 1 - Development

Encourage efficient use of land by facilitating compact, high-density development and minimizing the amount of land that is needed to accommodate automobile parking.

### Policy 2 - Development (continued)

Encourage development that preserves open space.

### Policy 3 - Priorities for Mobility and Access

Facilitate development (land use mix, density, connectivity, design, and orientation) that reduces the need for, and frequency of, SOV trips and supports public transit where applicable.

### Policy 4 - Priorities for Mobility and Access (continued)

Reinforce streets as public places that encourage pedestrian and bicycle travel.

### Policy 5 - Priorities for Mobility and Access (continued)

Provide roadway and pedestrian connections to residential areas.

### Policy 6 - Design

Develop commercial and mixed-use areas that are safe, comfortable and attractive to pedestrians.

### Policy 7 - Design (continued)

Provide flexibility in the siting and design of new developments, facilities, and redevelopment to respond to changes in the marketplace and infrastructure systems.

### Policy 8 - Design (continued)

Provide appropriate transitions between mixed-use areas and adjacent single-use neighborhoods.

These mixed-use goals and policies will be facilitated by the Plan because the Plan will provide the financial resources necessary to allow the Agency to assist in redevelopment of an underutilized site into a mixed-use neighborhood comprised of housing, retail, office, commercial, services, parking, and open spaces. This will provide the density, mix of uses and housing stock, and amenities that are the outcomes described in these policies. Without the possibility of financial assistance and other urban renewal tools made available by the Plan, this density of mixed-use development is not economically feasible for the private sector acting alone. Thus, the Plan implements key policies of the Salem Area Comprehensive Plan.

## 6. Commercial Development (SACP, Chapter IV, Goal G)

## SOUTH WATERFRONT URBAN RENEWAL PLAN

Goal: To maintain and promote the Salem urban area as a commercial center for the Marion-Polk County area.

### Policy 1 - Central Business District

The central business district shall be maintained and developed as a regional retail and employment center for the Salem urban area.

### Policy 4 - Community Shopping and Service Facilities

Community shopping and service facilities shall be located adjacent to major arterials and shall provide adequate parking and service areas. Land use regulations shall include provisions for siting and development which discourage major customer traffic from outside the immediate neighborhoods from filtering through residential streets.

### Policy 5 - Neighborhood and Community Shopping and Service Facilities

Unless the existing development pattern along arterials and collectors commits an area to strip development, new commercial development shall be clustered and located to provide convenience goods and services for neighborhood residents or a wide variety of goods and services for a market area of several neighborhoods.

These mixed-use development policies and goals will be facilitated by the Plan because the Plan will provide the financial resources necessary to allow the Agency to assist in redevelopment of an underutilized site into a mixed-use neighborhood comprised of housing, retail, office, commercial, services, parking, and open spaces. This will provide the density, mix of uses and housing stock, and community shopping and other service facilities, as well as amenities that are the outcomes described in these policies. Without the possibility of financial assistance and other urban renewal tools made available by the Plan, this density of mixed-use development is not economically feasible for the private sector acting alone. Thus, the Plan implements key policies of the Salem Area Comprehensive Plan.

## 7. Transportation (SACP, Chapter IV, Goal J)

Goal: To provide a balanced, multimodal transportation system for the Salem Urban Area that supports the safe and efficient movement of goods and people.

### Policy 4 - Multi-Modal Transportation System

The transportation system for the Salem Urban Area shall consist of an integrated network of facilities and services for a variety of motorized and nonmotorized travel modes.

## SOUTH WATERFRONT URBAN RENEWAL PLAN

### Policy 5 - Connectivity and Circulation

The vehicle, transit, bicycle, and pedestrian circulation systems shall be designed to connect major population and employment centers in the Salem Urban Area, as well as provide access to local neighborhood residential, shopping, schools, and other activity centers.

### Policy 7 - Supportive of land Use Plan Designations and Development Patterns

Local governments shall encourage the expansion of transit services throughout and beyond the Salem Urban Area, especially to areas of increased residential densities, major commercial concentrations, and large institutional and employment centers.

### Policy 12 - System Efficiency

The implementation of transportation system and demand management measures, enhanced transit service, and provision for bicycle and pedestrian facilities shall be pursued as a first choice for accommodating travel demand and relieving congestion in a travel corridor, before widening projects are constructed.

### Policy 14 - Transportation Safety

Local governments within the Salem Urban Area shall make as a high priority the planning, design, construction, and operation of a safe transportation system for all modes of travel including minimizing conflicts between different travel modes.

The Plan is consistent with the Transportation Goals set out above, as it includes several projects and activities designed to facilitate and expand use of the affected properties by pedestrians and bicyclists. Further, several transportation-oriented projects and activities planned for the Area are designed to improve the efficiency and safety of transportation services within the Area for all types of transportation. The trails, paths, and other open areas planned for the Area are designed to interconnect within the planned projects but also to connect transportation users to other transportation systems that exist within the City of Salem and within the Area, providing increased feasible access to the services, facilities and activities provided or available in the Area.

### 8. Open Space, Parks, and Recreation (SACP, Chapter IV, Goal K)

Goal: To provide for the recreation needs of the Salem urban area through the acquisition and development of adequate parks and recreation facilities.

### Policy 2 - Priority Acquisition

## SOUTH WATERFRONT URBAN RENEWAL PLAN

Priority shall be given to acquiring and developing neighborhood, community, and large urban parks. Exceptions will occur in isolated sub-neighborhood units where removing access barriers or providing pedestrian/bicycle linkages to existing parks will be given first priority in satisfying any given service area's recreational needs.

### Policy 4 - Recreation

Private and public sectors should look for opportunities to meet park facility needs through cooperative agreements. The City shall provide the foundation for private programs or facilities, volunteers, and other appropriate methods to supplement and extend the City's resources in developing and maintaining the park system.

### Policy 5 - Open Space

The preservation and connection of identified natural open space areas shall be protected through public acquisition and/or land use regulation.

### Policy 7 - Riparian Related

The development of uses relating to the Willamette River and area streams for recreation and scenic enjoyment should be encouraged.

The Plan is consistent with these Open Space, Parks, and Recreation Policies because it provides for the development of several areas within the Urban Renewal Area as open space intended for public use, including passive recreation. The Minto Island property will provide a very large urban park, and linkages are planned on the island for public use. Additional linkages will be considered and may be undertaken to connect several other park and trail systems around the downtown and waterfront area to facilitate use of these trails and nature areas. Public acquisition and land use regulation will both play a significant role in the development of these open spaces. Finally, the projects and activities related to the island and other open spaces planned for the Area will support the Willamette River Water Trail, and encourage public use of these water resources.

### 9. Scenic and Historic Resources, Natural Resources, and Hazards (SACP, Chapter IV, Goal N)

Goal: To conserve open space, protect natural, historic, cultural and scenic resources, and to protect life and property from natural disasters and hazards.

### Policy 5 - Waterways



## SOUTH WATERFRONT URBAN RENEWAL PLAN

Waterways shall be protected, preserved, and maintained as drainage courses and scenic, recreational, and natural resources. These characteristics shall be considered during the development review process. Public access to waterways for maintenance purposes should be provided.

### Policy 6 - Wildlife Habitat

Identified significant wildlife habitats shall be protected and managed in accordance with State wildlife management practices. The importance of riparian vegetation as wildlife habitat shall be considered during the development review process.

### Policy 7 - Flood Hazards

Development in the floodplain shall be regulated to preserve and maintain the capability of the floodplain to convey the flood water discharges and to minimize danger to life and property.

The Plan is consistent with the above policies because it provides for the development of several areas within the Urban Renewal Area as open space intended for public use, including passive recreation. Linkages are planned on the island, and additional linkages may undertaken to connect several other park and trail systems around the downtown and waterfront area to facilitate use of these trails and nature areas. Public acquisition, development, or both, of the scenic, historic, and natural resources land use regulation will encourage public use of these resources in the Area. Additionally, it is expected that consideration and protection of the wildlife on Minto Island will be a significant component in advancing the public use of the island property. Some of the property within the Area is subject to flooding, and management of flood hazards will be considered in conjunction with the redevelopment, specifically with respect to the island. As indicated above, the waterway and access to the water resources in the Area have been a material component in development of the Plan and the Area.

### 10. Willamette Greenway (SACP, Chapter IV, Goal O)

Goal: To protect, conserve, enhance and maintain the natural, scenic, historical, agricultural, economic and recreational qualities of lands along the Willamette River.

#### Policy 1 - Use of Land

Regulations to control the use of land and the intensity of uses within the Willamette River Greenway Boundary shall be maintained.

#### Policy 2 - Vegetation and Wildlife

## SOUTH WATERFRONT URBAN RENEWAL PLAN

Riparian vegetation and wildlife within the Greenway Boundary shall be conserved. Conservation shall include protecting and managing riverbanks, sloughs, wildlife, and vegetation.

### Policy 3 - Scenic Easements

Scenic easements shall be used where practical to preserve and enhance the character of the river within the Greenway Boundary.

### Policy 4 - Public Access

Where private property is adjacent to public use areas, measures shall be taken to minimize disturbance to the private property.

### Policy 5 - Public Access (continued)

Development and redevelopment within the Greenway Boundary should include provisions for public access to and along the river.

### Policy 6 - Park and Recreation Sites

Existing parks within the Greenway Boundary shall be preserved and maintained. Additional sites for recreation and scenic views and access to the Willamette River should be acquired.

### Policy 7 - Changes of Land Uses

New development and changes of land uses which are compatible with the Greenway concept as defined in the State Land Use Goal may be permitted along the Willamette River.

These goals are facilitated by the Plan because it will allow the Agency to use tax increment funds to develop public amenities in the greenway area, and to develop pedestrian access on Minto Island and Minto-Brown Island Park. The amenities allowed by financing provided through the Plan will further the policies of vegetation preservation, public access, view preservation, development of parks, and visual access. In addition, the Plan's support of high-density, mixed-use development is consistent with the River-Oriented Use Policies.

## **B. City of Salem Zoning and Development Standards**

The Salem Revised Code (Title X) establishes zoning districts, which govern the allowed uses (including outright permitted uses and conditional uses) and contain development standards. Land within the Area is zoned General Industrial (IG), Retail Commercial (CR), Commercial Office (CO), and Central Business District (CB). See Figure 3 for current zoning designations. In addition to the underlying zoning districts, there is a Willamette Greenway Overlay, a Mixed-Use Overlay, and an Urban Development Overlay.

The Salem Revised Code does not have sections which describe the intent and purpose of the specific land use zones. However, the code implements the Salem Area Comprehensive Plan which describes each zone.

## SOUTH WATERFRONT URBAN RENEWAL PLAN

The Plan will help ensure that the Area develops and redevelops efficiently, with an emphasis on public infrastructure enhancements and recreation investments to enhance the Area's and broader community's livability. Further, one of the Plan's stated goals is to stimulate employment and business activity in the Area by drawing in a diverse mix of residential, retail and commercial uses, creating jobs and housing for local residents and strengthening the local economy.

### 1. Summary of Allowed Uses in the Zones

General Industrial: The uses permitted in this zone are agriculture, forestry, fishing, construction, manufacturing, transportation, communications, electric, gas and sanitary services, wholesale trade, retail trade, finance, insurance, and real estate, services, public administration and some other industrial uses.

The Plan does not support continued use of general industrial zoning.

Retail Commercial: The uses permitted in this zone are agriculture, forestry, construction, printing and publishing, transportation, communications, electric, gas, sanitary services, retail trade, finance, insurance, real estate, services, public administration, and other retail commercial uses.

The Plan supports continued retail commercial uses.

Commercial Office: The uses permitted in this zone are residential, agriculture and forestry, transportation services, retail trade, finance, insurance and real estate, services, public administration and other commercial office uses.

The Plan supports continued commercial office uses.

Commercial: The uses permitted in this zone are agriculture and forestry, construction, printing and publishing, transportation, communication, electric, gas, and sanitary services, wholesale trade, retail trade, finance, insurance, and real estate, services, public administration and other commercial uses.

The Plan supports continued commercial uses.

Central Business District: The uses permitted in this zone are agriculture and forestry, construction, manufacturing, transportation, communication, electric and gas, and sanitary services, wholesale trade, retail trade, finance, insurance and real estate, services, public administration, and other CBD uses, dwellings, dwelling units, and temporary accommodations.

The Plan supports continued central business district uses.

Residential Agriculture District: The uses permitted in this zone are a varied mixture of residential, agriculture and agriculture related uses as well as public facilities and infrastructure.

## SOUTH WATERFRONT URBAN RENEWAL PLAN

The area zoned residential agriculture is the Salem Audubon Society property. The Plan anticipates and supports continued uses as directed by the Audubon Society and in conformance with the underlying zoning.

### 2. Willamette Greenway Overlay

The intent and purpose of the Willamette Greenway Overlay is set out under Salem Revised Code 141.010 as follows:

- (a) To protect and enhance the natural, scenic, recreational, historical, and economic resources of the Willamette River corridor;
- (b) To implement the goals and policies of the comprehensive plan, the Greenway Plan and Goal 15 of the Land Conservation and Development Commission Statewide Planning Goals;
- (c) To establish standards and requirements for the use of lands within the Willamette River Greenway of Salem;
- (d) To provide for the review of any intensification of use, change of use, or development of properties located within the Willamette River Greenway of Salem;
- (e) To allow for use and development consistent with the underlying land use designation while preserving, protecting, and enhancing the scenic qualities of the river and the riparian area;
- (f) To allow and encourage a variety of water-dependent, water-related and river oriented uses, recreational developments and public access to and along the river while preserving, protecting, and enhancing the scenic qualities of the river and the riparian area;
- (g) To insure that land use and activities which make use of the riparian area are limited to moderate impact on that environment, and do not endanger it;
- (h) To insure that the intensification, development, or change of use on a site is in keeping with the function of the Greenway Plan, and preserves and enhances the scenic qualities or economic function of the river, the site, and adjacent riparian lands;
- (i) To insure that the proposed development is in harmony with existing and proposed adjoining land uses;
- (j) To protect and improve water quality in the Willamette River in order to support designated beneficial water uses, and to protect the functional value of the riparian area and provide a riparian buffer to separate the Willamette River from development. (Ord No. 186-82; Ord No. 16-2004)

The Plan will help ensure that the Area provides enhanced access to the Willamette Riverfront, Pringle Creek and Minto Island. Through the Minto Island Property Acquisition and Multi-use Path project, the Plan also encourages water-dependent, water-related and river oriented uses.

## SOUTH WATERFRONT URBAN RENEWAL PLAN

### 3. Mixed-use Center and Corridor Overlay

The purpose of the Mixed-use Center and Corridor Overlay (Chapter 143F.010) is to implement the residential and non-residential land use concepts contained in the Salem Area Comprehensive Plan (SACP) by providing residential uses along with commercial, office and neighborhood services uses.

The Plan will support the mixed-use center concepts in the SACP.

### 4. Commercial/Rural Urban Development Overlay

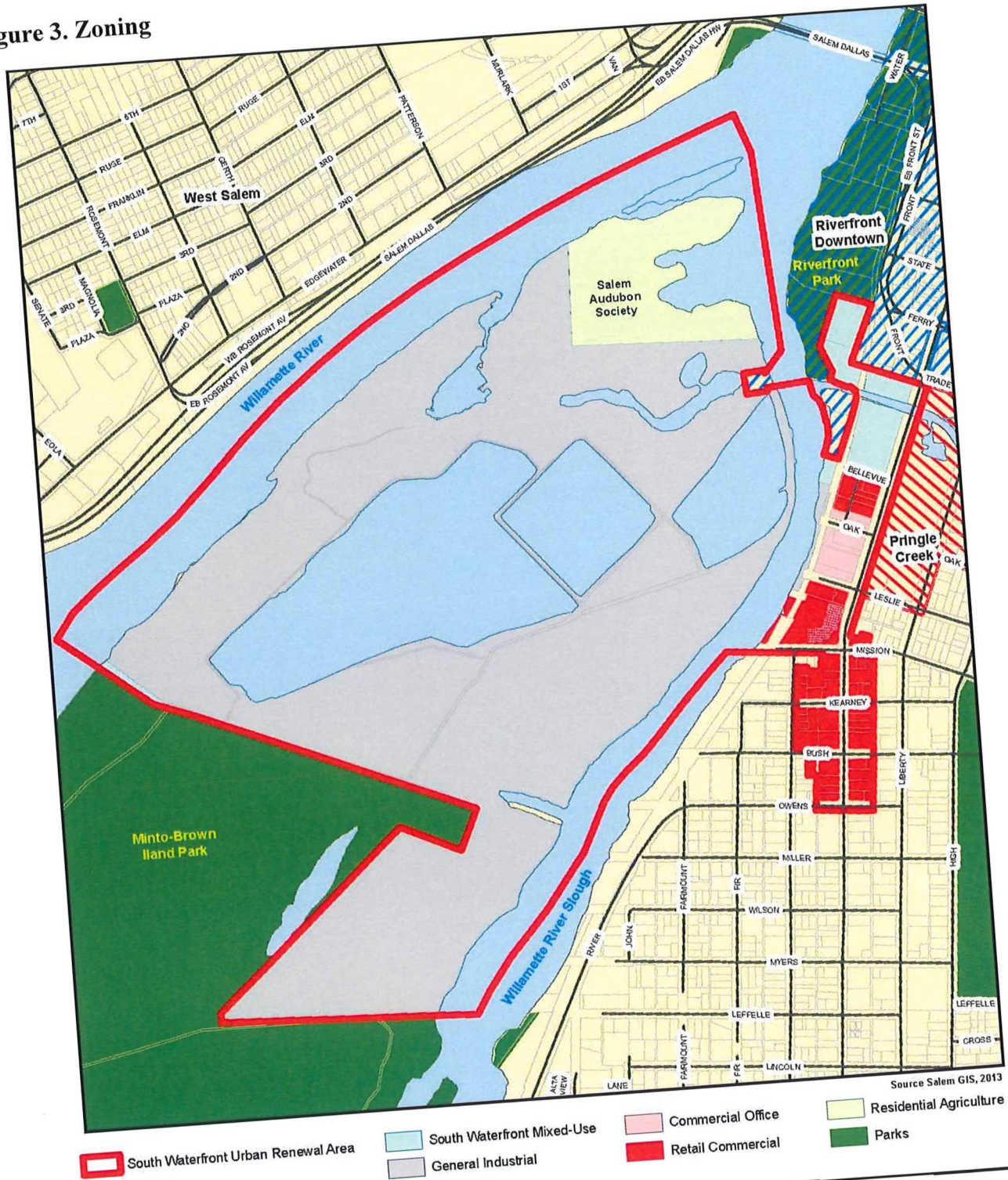
The Commercial/Rural Urban Development Overlay Zone (Ch. 142.010) sets forth particular development standards to guide development, redevelopment, and changes in land use so as to minimize impacts on existing residential uses.

The Plan encourages new commercial and residential development and supports the concepts of minimizing the impacts on existing residential uses.

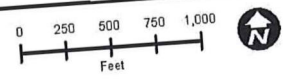


# SOUTH WATERFRONT URBAN RENEWAL PLAN

Figure 3. Zoning



Urban Renewal Area Zoning  
 South Waterfront Urban Renewal Area

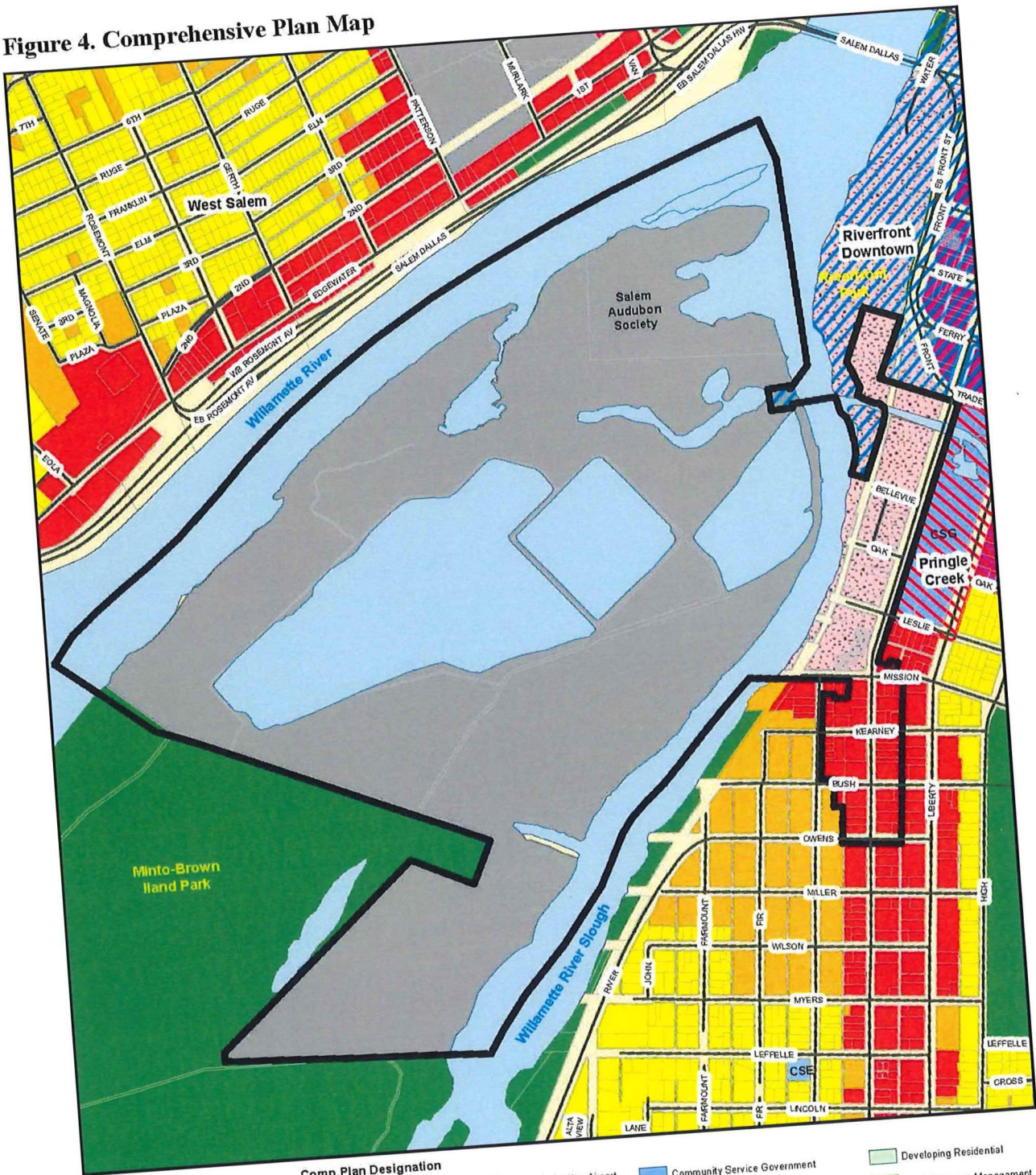


(Resolution No. 13-12 URA)



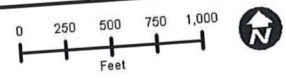
# SOUTH WATERFRONT URBAN RENEWAL PLAN

Figure 4. Comprehensive Plan Map



Comp Plan Designation		
	South Waterfront Urban Renewal Area	
	Commercial	
	Commercial Business District	
	Community Service	
	Multi-Family Residential	
	River Oriented Mixed Use	
	Mixed Use	
	Community Service Airport	
	Community Service Cemetery	
	Community Service Education	
	Community Service Government	
	Community Service Hospital	
	Community Service Sewage - Solid Waste	
	Industrial Commercial	
	Parks - Open Space - Outdoor Recreation	
	Single Family Residential	
	Developing Residential	
	Farm Resource Management	
	Employment Center	
	Industrial	

Urban Renewal Area Comprehensive Plan Designations  
 South Waterfront Urban Renewal Area



(Resolution No. 13-12 URA)



## SOUTH WATERFRONT URBAN RENEWAL PLAN

### C. Transportation System Plan Goals, Objectives and Policies

Adopted in 1998 and most recently amended in 2005, the stated purpose of the Transportation System Plan (TSP) is to “provide a framework of goals, objectives, and policies that will guide our community’s efforts at achieving mobility through the remainder of this century and the first third of the 21st century. In addition, the TSP will show how our community must invest its resources in future transportation programs and infrastructure to meet anticipated travel demands.”

The Plan’s goals, objectives, policies and transportation infrastructure projects directly address or correlate to planning needs identified in the TSP’s Street System Element, Bicycle System Element and Pedestrian System Element as described below.

#### 1. Street System Element

Goal: To provide a comprehensive system of streets and highways that serves the mobility and multimodal travel needs of the Salem Urban Area.

Objective Number 1 - To develop a comprehensive, hierarchical system of streets and highways that provides optimal mobility for all travel modes throughout the Salem Urban Area. Policies implementing this objective are:

##### Policy 1.1 - Multimodal Capacity

The City shall fulfill its system wide travel capacity needs through the utilization of multiple travel modes within the public rights-of-way.

##### Policy 1.3 - System of Peripheral Arterial Streets

The City’s street system shall contain a network of peripheral arterial streets that intercept radial street routes, linking outlying residential, commercial, and business districts without having to travel through the central core area.

Objective Number 2 - To design city streets in a manner that maximizes the utility of public rights-of-way, is appropriate to their functional role, and provides for multiple travel modes, while minimizing their impact on the character and livability of surrounding neighborhoods and business districts. Policies implementing this objective are:

##### Policy 2.1 - Multimodal Street Design

The City of Salem shall design its streets to safely accommodate pedestrian, bicycle, and motor vehicle travel.

##### Policy 2.6 - Streetscape Design and Aesthetics

Wherever possible the City of Salem shall incorporate safely designed, aesthetic features into the streetscape of its public rights-of-way. These features may include: planting of street trees, shrubs, and grasses;

## SOUTH WATERFRONT URBAN RENEWAL PLAN

incorporation of planting strips and raised medians; and, in some instances, the installation of street furniture, planters, special lighting, public art, and nonstandard paving materials.

Objective Number 4 - To efficiently plan, design, and construct City-funded street improvement projects to meet the safety and travel demands of the community. The policy implementing this objective is:

### Policy 4.3 - Project Design Life

To maximize the longevity of its capital investments, the City shall design street improvement projects to meet existing travel demand and, whenever possible, accommodate the anticipated travel demand of the next 20 years for that facility.

Insofar as these activities occur within the Area, the Plan supports these Street System Element goals, objectives and policies by facilitating the improvement of Commercial Street as a multimodal peripheral arterial. The Plan also proposes extending a transportation network into the Area at both Bellevue Street and State Street.

## 2. Bicycle System Element

Goal: To provide a comprehensive system of connecting on-street bicycle facilities that will encourage increased ridership and safe bicycle travel.

Objective Number 1 - To create a comprehensive system of bicycle facilities. The Policy implementing this objective is:

### Policy 1.1 - Provide Bicycle Facilities on Arterial and Collector Streets

Bicycle lanes shall be provided on all newly constructed Arterial and Collector streets. Arterial and Collector streets undergoing overlays or reconstruction will be restriped with bicycle lanes as designated on the Bicycle Route and Facility System Map. Every effort will be made to retrofit existing Arterials and Collectors with bicycle lanes, as designated on the Map.

The Plan supports the Bicycle System Element by providing for bicycle lanes on Commercial Street. It also provides for multi-use pathways on the riverfront and on Minto Island. The inclusion of bike lanes and streetscape amenities in proposed transportation projects will increase multimodal safety and connectivity, create a more livable, visually pleasing physical environment and encourage alternative modes of transportation to the single occupancy vehicle.

## SOUTH WATERFRONT URBAN RENEWAL PLAN

### 3. Pedestrian System Element

Goal: To provide a comprehensive system of connecting sidewalks and walkways that will encourage and increase safe pedestrian travel.

Objective Number 1 - To create a comprehensive system of pedestrian facilities. The policy implementing this objective is:

#### Policy 1.4 - Ensuring Future Sidewalk Connections

All future development shall include sidewalk and walkway construction as required by the Salem Revised Code and adopted City of Salem Design Standards. All road construction or renovation projects shall include sidewalks.

Objective Number 2 - The City of Salem shall seek to double the 1995 percentage of trips made by pedestrians by the year 2015. The policy implementing this objective is:

#### Policy 2.2 - Pedestrian Supportive Land Uses

Comprehensive Plan land use designations and zoning shall be developed to allow for mixed-use land uses which promote pedestrian travel.

The Plan supports this policy by including pedestrian improvements along Pringle Creek, along the Willamette River, and on Minto Island. The inclusion of bike lanes and streetscape amenities in proposed transportation projects will increase multimodal safety and connectivity, create a more livable, visually pleasing physical environment for pedestrians and bicyclists and encourage alternative modes of transportation to the single occupancy vehicle.

### 4. Transit Element

Goal: A public mass transit system that provides convenient and accessible transit services to the citizens of the Salem Urban area.

Objective Number 1 - Ensure that transit services are accessible to Salem Urban Area residences and businesses. Policies implementing this objective are:

#### Policy 1.2 - Transit-supportive Land Uses

To encourage accessibility and increased ridership, the City shall encourage future transit supportive land uses, such as mixed-uses, multiple family, and employment centers, to be located on or near transit corridors. Likewise, appropriate transit services should be made available to existing transit-supportive land uses.

#### Policy 1.3 - Transit-supportive Urban Design

Through its zoning and development regulations, the City shall facilitate accessibility to transit services through transit-supportive streetscape,

## SOUTH WATERFRONT URBAN RENEWAL PLAN

subdivision, and site design requirements that promote pedestrian connectivity, convenience, and safety.

The Plan supports the transit element by proposing mixed-use development which is transit supportive. The Plan also makes provisions for funding to help facilitate a future Commuter Rail Transit Center.

### **VII. PLANNED LAND USES**

Land uses within the Area are governed by the City of Salem Revised Code. The Zoning Ordinance establishes zoning districts that implement the Salem Area Comprehensive Plan. The zoning districts govern the allowed uses (including outright permitted uses and conditional uses) and contain development standards.

Land in the Area is within a variety of zoning districts, as shown in Figure 3. Properties south of Mission Street are solely retail commercial zoned properties. The properties north of Mission Street have a mixture of zoning designations including Retail Commercial with a Mixed-use Overlay, Commercial Office, Central Business District, Railroad, Residential Agriculture and General Industrial zoning. The area which is currently zoned General Industrial will be changed to a mixed-use designation to encourage redevelopment of the Area consistent with the recommendations of the ULI study.

### **VIII. PROPERTY ACQUISITION AND DISPOSITION**

The Plan authorizes the acquisition and disposition of property as described in this section. Property includes any and all interests in property, including fee simple ownership, lease, easements, licenses or other rights to use. The estimated time schedule for the acquisition and disposition of property under the Plan will be completed by the end of fiscal year 2025.

#### **A. Property Acquisition for Public Improvements**

The Agency may acquire any property within the Area for public improvement projects authorized in the Plan by all legal means, including use of eminent domain. Good faith negotiations for such acquisition must occur prior to institution of eminent domain procedures. Acquisition of property authorized under this Plan must follow applicable policies and procedures adopted by the Urban Renewal Agency, such as Resolution 06-4 URA.

#### **B. Property Acquisition from Willing Sellers**

The Plan authorizes the Agency acquisition of any interest in real property within the Area, including fee simple interest, to support private redevelopment, only in those cases where the property owner wishes to convey such interests to the Agency. The Plan does not authorize use of the power of eminent domain to acquire property for private redevelopment where such acquisition is not allowed under applicable state, federal, or local law.

## SOUTH WATERFRONT URBAN RENEWAL PLAN

Property acquisition from willing sellers may be required to support development of projects within the Area.

### **C. Land Disposition**

The Agency may dispose of property acquired under the Plan by conveying any interest in property acquired pursuant to Subsection VIII A or B, so long as such disposition is allowed by law. Property shall be conveyed at its fair reuse value. Fair reuse value is the value, whether expressed in terms of rental or capital price, at which the urban renewal agency in its discretion determines such land should be made available in order that it may be developed, redeveloped, cleared, conserved or rehabilitated for the purposes specified in such plan. Because fair reuse value reflects limitations on use of the property to those purposes specified in the Plan, the value may be lower than the property's fair market value.

Where real property is sold or leased, the purchaser or lessee must agree to use the land for the purposes designated in the Plan and to begin and complete the building of their improvements within a period of time that the Agency determines is reasonable.

## **IX. RELOCATION METHODS**

Where property is acquired under the Plan and the acquisition is through or under the threat of eminent domain, residential or commercial occupants of such property shall be offered relocation assistance as required under applicable state law. Prior to such acquisition, the Agency may develop such policies, procedures, rules or regulations as necessary for the administration of relocation assistance.

## **X. TAX INCREMENT FINANCING OF PLAN**

Tax increment financing consists of using annual tax increment revenues to make debt payments, usually in the form of payment of tax increment bonds. The proceeds of the bonds are used to finance the urban renewal projects authorized in the Plan. Bonds may be either long-term or short-term.

Tax increment revenues equal most of the annual property taxes imposed on the cumulative *increase* in assessed value within an urban renewal area over the total assessed value at the time the urban renewal plan is adopted. Under law effective upon the date of the approval of this Plan, the property taxes for general obligation ("GO") bonds and local option levies approved after October 6, 2001 are not part of the tax increment revenues.

### **A. General Description of the Proposed Financing Methods**

The Plan will be financed using a combination of revenue sources. These include:

- Tax increment revenues;
- Advances, loans, grants and any other form of financial assistance from the Federal, State or local governments or other public body;

## SOUTH WATERFRONT URBAN RENEWAL PLAN

- Loans, grants, dedications or other contributions from private developers and property owners, including but not limited to assessment districts; and
- Funds from any other public or private source.

Revenue obtained by the Agency will be used to pay or repay the costs, expenses, advancements and indebtedness incurred in (1) planning or undertaking project activities, or (2) otherwise exercising any of the powers granted by ORS Chapter 457 in connection with the implementation of this Plan.

### **B. Tax Increment Financing and Maximum Indebtedness**

The Plan may be financed, in whole or in part, by tax increment revenues as authorized by Section 1c, Article IX of the Oregon Constitution and allocated to the Agency as provided in ORS Chapter 457. The ad valorem taxes, if any, levied by a taxing district in which all or a portion of the Area is located, shall be divided as provided in Section 1c, Article IX of the Oregon Constitution, and ORS 457.440. Amounts collected pursuant to ORS 457.440 shall be deposited into the unsegregated tax collections account and distributed to the Agency based upon the distribution schedule established under ORS 311.390.

The maximum amount of indebtedness that may be issued or incurred under the Plan, based upon good faith estimates of the scope and costs of projects in the Plan and the schedule for their completion is \$24,000,000. This amount is the principal of such indebtedness and does not include interest or indebtedness incurred to refund or refinance existing indebtedness.

### **C. Prior Indebtedness**

Any indebtedness permitted by law and incurred by the Agency or the City of Salem in connection with the preparation of this Plan or prior planning efforts related to this Plan may be repaid from tax increment revenues from the Area when and if such funds are available.

## SOUTH WATERFRONT URBAN RENEWAL PLAN

### **XI. FUTURE AMENDMENTS TO PLAN**

It is anticipated this plan may be amended as described in this section will be reviewed periodically during its execution, and may be changed, modified, or amended as future conditions warrant.

#### **A. Substantial Amendments**

Substantial Amendments are solely amendments:

- Adding land to the urban renewal area, except for an addition of land that totals not more than one percent of the existing area of the urban renewal area; or
- Increasing the maximum amount of indebtedness that can be issued or incurred under the Plan.

#### **B. Minor Amendments**

Minor Amendments are defined as any change to this plan that is not classified as a Substantial amendment.

[\(Reso. No. 22-13 URA\)](#)



## APPENDIX A: LEGAL DESCRIPTION

### **City of Salem South Waterfront Urban Renewal Area Outbounds Description**

Beginning at the South One-quarter Corner of Section 28, Township 7 South, Range 3 West, Willamette Meridian;

Thence Northerly along the West line of Lot 7, said Section 28, a distance of 66 feet;

Thence North 45°53' East, a distance of 1832.70 feet;

Thence South 67°32' East, a distance of 461.67 feet;

Thence North 22°28' East, a distance of 315.51 feet;

Thence North 70°25' West, a distance of 513.00 feet;

Thence North 69°10' West, a distance of 1485.00 feet;

Thence North 70°19' West, a distance of 322.20 feet;

Thence North 52°17' West, a distance of 598.80, 70 feet more or less to the center of the Willamette River;

Thence along said center line, Northeasterly a distance of 5768 feet more or less to a point at right angles to the Northern most point of Minto Island;

Thence leaving said center line and turning Southeasterly to said Northern most point of Minto Island;

Thence Southerly through the Willamette Slough to the intersection with the South 39°57'45" West course of the Westerly Line of the Riverfront Downtown Urban Renewal Area;

Thence along said Westerly Line, South 39°57'45" West, a distance of 232 feet more or less to a point on Minto Island, said point being South 84°57'45" West, a distance of 280 feet more or less from a spike surveyed and monumented by City of Salem, said point being North 05°02'15" West, a distance of 113.31 feet from a tack in lead in a retaining wall on the North Bank of Pringle Creek;

Thence North 05°02'15" West, a distance of 25 feet;

Thence South 84°57'45" West, a distance of 150 feet;

Thence South 05°02'15" East, a distance of 150 feet;

Thence North 84°57'45" East, a distance of 150 feet;

Thence North 05°02'15" East, a distance of 25 feet;

Thence North 84°57'45" East, a distance of 280 feet more or less to a point on the low water mark or the East Bank of said Willamette Slough and/or River;

Thence Southerly along the ordinary low water line of the Willamette Slough, 710 feet more or less to a point of intersection of the Westerly extension of the north Line of Bellevue Street S.;

Thence Easterly along said Westerly extension of the North Line of said Bellevue Street S., 125 feet more or less to a point on the West Line of the Burlington Northern and Santa Fe Railroad right-of-way;

Thence Northerly along the West Line of said Railroad right-of-way, 600 feet more or less to a point on the North Bank of Pringle Creek;

Thence Westerly along said North Bank of Pringle Creek to the point of intersection of a line established by survey by the City of Salem, in County Survey No. 030067;

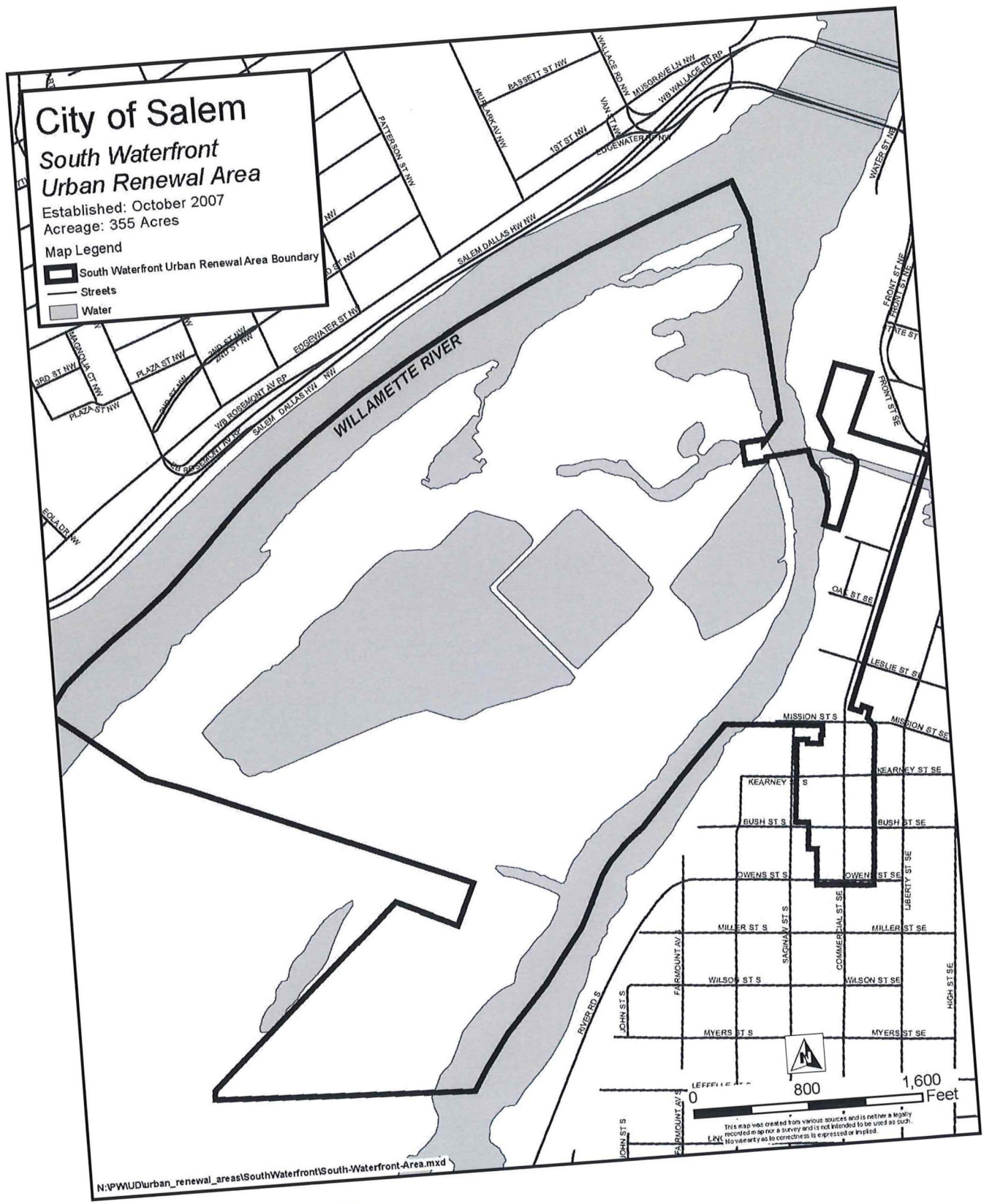
Thence North 22°27'50" West, a distance of 75 feet more or less to a 5/8-inch iron rod and cap marked "City of Salem";

Thence North 22°32'10" West, a distance of 195.55 feet;

Thence North 22°27'50" East, a distance of 381.57 feet;  
Thence South 69°04'17" East, a distance of 261.17 feet more or less to a point on the West Line of the now vacated Front Street SE'  
Thence South 22°32'00" West, along the said now vacated Front Street, a distance of 400 feet more or less to a point of intersection of the Westerly extension of the South Line of Trade Street SE;  
Thence South 67°26' East along the Westerly extension of the South Line of said Trade Street SE, a distance of 445 feet more or less to a point on the West Line of Commercial Street SE;  
Thence Southeasterly along said Westerly extension of the South Line of Trade Street SE to the East Line of said Commercial Street SE;  
Thence Southerly along said East Line of Commercial Street SE to a point being 8.35 feet North of the South Line of W. H. Wilson D.L.C.;  
Thence Easterly parallel with said South Line of W. H. Wilson D.L.C., a distance of 73.20 feet;  
Thence Northerly a distance of 40 feet;  
Thence Easterly a distance of 60 feet to the West Line of the Alley in Block 40, City of Salem;  
Thence along said West Line of the Alley to the North Line of Mission Street;  
Thence Southeasterly through Mission Street to the intersection of the South Line of Mission Street with the East Line of the Alley in Block 1, G H Jones Addition to the City of Salem;  
Thence Southerly along said East Line of the Alley through Blocks 1, 4 and 5, G H Jones Addition and to the South Line of Owens Street;  
Thence Westerly along said South Line of Owens Street to the intersection with the extension of the West Line of the Alley in Block 1, Hugh Owens Addition to the City of Salem;  
Thence Northerly a distance of 246.45 feet through Owens Street and along said West Line to a point 120.16 feet from the South Line of Bush Street;  
Thence West a distance of 60 feet;  
Thence North a distance of 186.16 feet to a point on the North Line of Bush Street;  
Thence West along said North Line of Bush Street to the East Line of Saginaw Street;  
Thence North along said East Line of Saginaw Street to a point 100 feet South of the South Line of Mission Street;  
Thence East, a distance of 72 feet;  
Thence South, a distance of 27.50 feet;  
Thence East, a distance of 94 feet;  
Thence North, a distance of 127.50 feet;  
Thence East, a distance of 9 feet;  
Thence North, a distance of 66.50 feet to the South Line of Mission Street;  
Thence West along said South Line of Mission Street to the centerline of the Willamette Slough;  
Thence Southerly along the centerline of the Willamette Slough to the South Line of said Section 28;  
Thence Westerly along said South Line of Section 28 to the Point of Beginning.

Said area contains approximately 410 Acres more or less.

Amended: January 22, 2008 – Resolution 08-2 URA: “Thence North 52°17' West, a distance of 598.80 feet more or less to the center of the Willamette River;”



(Resolution No. 13-12 URA)

**RESOLUTION NO. 22-13 URA**

A RESOLUTION APPROVING AN AMENDMENT TO THE SOUTH WATERFRONT URBAN RENEWAL PLAN TO DELETE SECTION XI FUTURE AMENDMENTS TO PLAN.

**Whereas**, the South Waterfront Urban Renewal Plan (the Plan) was adopted on September 4, 2007; and was most recently amended on September 9, 2013; and

**Whereas**, Section XI. of the South Waterfront Urban Renewal Plan describes how the Plan may be amended and defines Substantial, Major and Minor amendments; and

**Whereas**, the proposed amendments are not Substantial or Major in scope and are therefore considered Minor; and

**Whereas**, the Board desires that Urban Renewal Plans are consistent with the State of Oregon Revised Statutes regarding amendments to Urban Renewal Plans.

**Whereas**, an amendment to edit Section XI Future Amendments to Plan, has been proposed so that all Urban Renewal Plans consistently refer to only Substantial and Minor amendments; and

**Whereas**, the proposed amendments to the Plan are attached hereto as "Exhibit A" and incorporated herein by reference.

NOW, THEREFORE, THE BOARD OF THE URBAN RENEWAL AGENCY OF THE CITY OF SALEM, OREGON, RESOLVES AS FOLLOWS:


**Section 1: Approval of the Amendments.** South Waterfront Urban Renewal Plan is hereby amended to read as set forth in "Exhibit A".

**Section 2: Effective Date.** This resolution is effective upon adoption.

ADOPTED by the Urban Renewal Agency Board this 12<sup>th</sup> day of December 2022.

ATTEST:

  
Deputy Clerk of the Board

Approved by City Attorney:  \_\_\_\_\_

Checked by: S. Lenaerts

## EXHIBIT A

### I. FUTURE AMENDMENTS TO PLAN

~~It is anticipated The this Pplan may be amended as described in this section.~~ will be reviewed periodically during its execution, and may be changed, modified, or amended as future conditions warrant.

#### ~~A.~~ **Substantial Amendments**

Substantial Amendments are solely amendments:

- Adding land to the urban renewal area, except for an addition of land that totals not more than one percent of the existing area of the urban renewal area; or
- Increasing the maximum amount of indebtedness that can be issued or incurred under the Plan.

~~Substantial Amendments, in accordance with ORS 457.085(2)(i), shall require the same notice, hearing and approval procedure required of the original Plan under ORS 457.095, including public involvement, notice to taxing districts, presentation to the Planning Commission, and adoption by the City Council by non-emergency ordinance after a hearing. Notice of such hearing shall be provided to individuals or households within the City of Salem as required by ORS 457.120. Notice of adoption of a Substantial Amendment shall be provided in accordance with ORS 457.095 and .115.~~

#### ~~B.~~ **Major Amendments**

~~Major Amendments consist solely of amendments which result in:~~

- ~~Material changes to the goals and objectives of the Plan; or~~
- ~~Addition or expansion of a project where the expenditure of financing materially affects the Agency's ability to complete other projects in the Plan.~~

~~Major Amendments require approval by the Agency by resolution and by the City Council by ordinance or resolution.~~

#### ~~C.~~ **Minor Amendments**

~~B. Minor Amendments are amendments are defined as any change to this plan that are is not classified as a Substantial amendment, or Major Amendments in scope. They require approval by the Agency by resolution, and do not require approval by the City Council.~~

#### ~~D.~~ **Amendments to the Salem Area Comprehensive Plan and/or Salem Revised Code**

~~Amendments to the Salem Area Comprehensive Plan or Salem Revised Code that affect the Plan or the Area shall be incorporated within the Plan without any action required by the Agency or the City Council.~~

**RESOLUTION NO. 22-13 URA**

**A RESOLUTION APPROVING AN AMENDMENT TO THE SOUTH WATERFRONT URBAN RENEWAL PLAN TO DELETE SECTION XI FUTURE AMENDMENTS TO PLAN**

Adopted: December 12, 2022
Effective: December 12, 2022
Copy to:

Board Vote	Yes	No
Chair Hoy	X	
Stapleton (Ward 1)	X	
Nishioka (Ward 2)	X	
Phillips (Ward 3)	X	
Leung (Ward 4)	X	
Gonzalez (Ward 5)	X	
Hoy (Ward 6)	X	
Nordyke (Ward 7)	X	
Varney (Ward 8)	X	

\*A = Absent



**REEL: 4680**

**PAGE: 172**

**December 28, 2022, 02:20 pm.**

CONTROL #: 727459

State of Oregon  
County of Marion

I hereby certify that the attached instrument was received and duly recorded by me in Marion County records:

FEE: \$ 301.00

BILL BURGESS  
COUNTY CLERK

THIS IS NOT AN INVOICE.