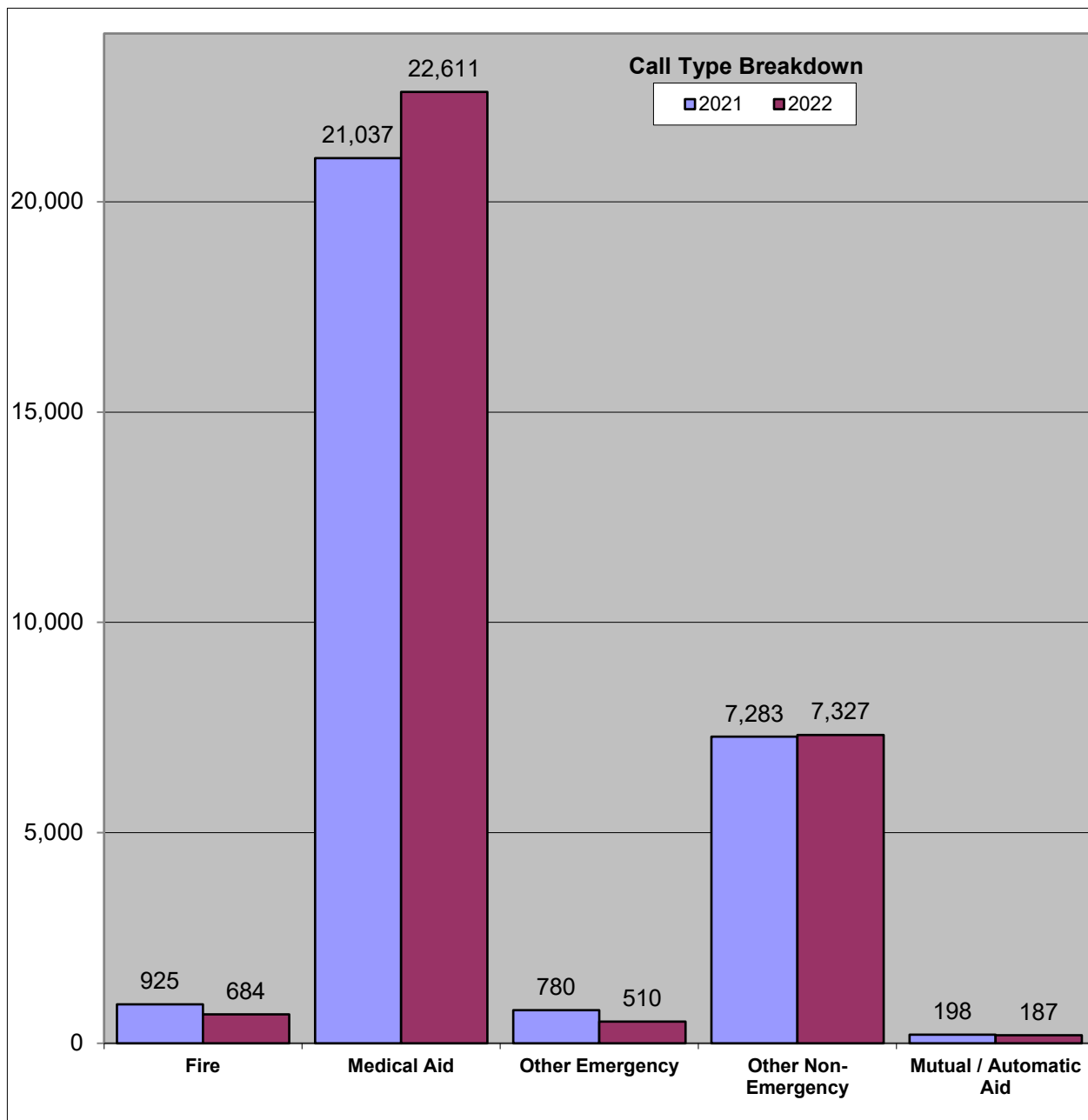


Salem Fire Department 2022 Calendar Year Stats at a Glance

Totals Salem Fire Department Calls		
Incident Type	2021	2022
Fire	925	684
Over Pressure / Rupture	3	2
Medical Aid	21,037	22,611
Hazardous Conditions	776	506
Service Calls	3,146	3,292
Good Intent (includes Cancelled)	2,938	2,791
False Alarms	1,196	1,242
Severe Weather/Natural Disaster	1	2
Special / Other / Citizen Complaint	3	2
Total in Salem / SSRFPD#1	30,025	31,132
Mutual / Automatic Aid	198	187
Grand Totals	30,223	31,319

Mutual/Auto Aids Type Breakdown		
Incident Type	2021	2022
Fire	27	38
Over Pressure / Rupture	0	0
Medical Aid	96	84
Hazardous Conditions	16	6
Service Calls	24	35
Good Intent	32	22
False Alarms	3	2
Severe Weather	0	0
Special / Other	0	0
Totals	198	187



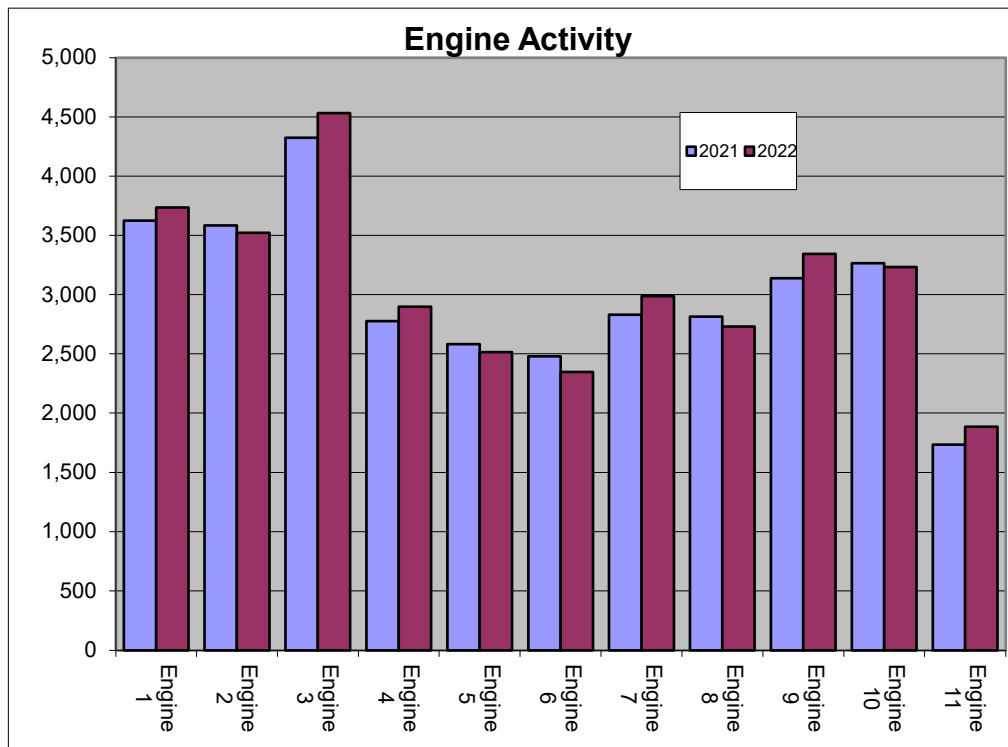
SFD Calls in District Per Year, Percent of Increase & Average Daily Calls			
Year	Calls	% of Inc	Daily
2012	16,727	-1.08%	46
2013	17,429	4.20%	48
2014	18,860	8.21%	52
2015	19,976	5.92%	55
2016	22,046	10.36%	60
2017	23,176	5.13%	63
2018	25,431	9.73%	69
2019	26,170	2.91%	72
2020	25,799	-1.42%	71
2021	30,025	16.38%	82
2022	31,132	3.69%	85

5.5 Minute Response Time Goal Percentage			
	Jan - Jun	Jul-Dec	All Year
2012	76.8%	71.8%	74.3%
2013	70.8%	72.8%	71.8%
2014	73.9%	71.5%	72.7%
2015	71.3%	74.7%	73.0%
2016	74.8%	71.6%	73.1%
2017	73.6%	71.6%	73.1%
2018	70.9%	70.8%	70.9%
2019	70.6%	68.9%	69.8%
2020	67.3%	63.7%	65.4%
2021	61.1%	62.0%	61.6%
2022	61.3%	60.5%	60.9%



Calls in Station Area, and Engine Reliability Percentages								
	2021	Jan - Jun	Jul - Dec	All Year	2022	Jan - Jun	Jul - Dec	All Year
Station 1	3,265	89.8%	86.9%	88.3%	3,584	88.7%	88.1%	88.3%
Station 2	3,082	93.8%	93.8%	93.8%	3,012	91.8%	92.9%	92.4%
Station 3	4,257	87.2%	84.0%	85.5%	4,537	83.2%	81.8%	82.5%
Station 4	2,323	91.5%	91.5%	91.5%	2,489	92.1%	90.7%	91.3%
Station 5	2,565	88.7%	87.2%	87.9%	2,580	86.1%	88.0%	87.1%
Station 6	1,942	87.7%	87.0%	87.3%	1,868	87.5%	86.4%	86.9%
Station 7	2,526	89.2%	90.1%	89.7%	2,816	87.7%	87.4%	87.6%
Station 8	2,554	89.5%	88.0%	88.7%	2,567	87.4%	88.2%	87.8%
Station 9	3,187	88.8%	87.4%	88.1%	3,380	86.3%	86.4%	86.4%
Station 10	2,920	85.9%	82.5%	84.0%	2,812	81.1%	81.8%	81.4%
Station 11	1,404	91.5%	88.0%	89.7%	1,487	85.7%	84.0%	84.8%
Mutual/Auto Aid	198				187			
Totals	30,223	89.2%	87.4%	88.2%	31,319	86.7%	86.7%	86.7%

Unit Activity and Arrivals				
Unit	2021 Total	2021 Arrivals	2022 Total	2022 Arrivals
Engine 1	3,623	2,663	3,735	2,577
Engine 2	3,584	2,787	3,520	2,698
Engine 3	4,322	3,497	4,530	3,593
Engine 4	2,775	2,122	2,898	2,175
Engine 5	2,582	2,032	2,515	1,912
Engine 6	2,478	1,873	2,348	1,745
Engine 7	2,830	2,262	2,988	2,361
Engine 8	2,814	2,138	2,731	2,095
Engine 9	3,137	2,536	3,342	2,624
Engine 10	3,264	2,424	3,233	2,249
Engine 11	1,735	1,349	1,886	1,454
Engine Totals	33,144	25,683	33,726	25,483
Ladder 2	1,148	776	1,086	695
Ladder 4	978	584	887	577
Ladder Totals	2126	1360	1973	1272
Medic 16	347	110	1,775	1,360
Medic 19	310	120	79	35
Medic Totals	657	230	1,854	1,395
Grand Totals	35,927	27,273	37,553	28,150



Total Fires and Multi-Alarm Fires					
Year	Fires	2nd	3rd	4th >	Total Multi-Alarm
2016	451	23	0	1	19
2017	546	24	1	1	24
2018	564	12	0	0	26
2019	517	11	3	1	12
2020	586	14	1	0	15
2021	925	12	4	0	16
2022	684	11	0	2	13

Fire Value and Loss, and Loss Per \$1000 of Value			
Year	Value	Loss	Loss per \$1000
2012	\$400,773,436	\$6,279,300	\$15.67
2013	\$351,046,137	\$5,759,074	\$16.41
2014	\$281,093,060	\$3,090,112	\$10.99
2015	\$576,725,073	\$3,386,325	\$5.87
2016	\$158,125,675	\$4,846,465	\$30.65
2017	\$134,438,719	\$4,848,764	\$36.07
2018	\$395,575,690	\$2,509,265	\$6.34
2019	\$553,452,514	\$5,754,790	\$10.40
2020	\$209,158,701	\$10,689,151	\$51.11
2021	\$211,478,294	\$10,025,939	\$47.41
2022	\$195,817,580	\$6,301,830	\$32.18

Fires by Type Breakdown		
Call Type	2021	2022
Structure	176	125
Mobile Structure	8	10
Vehicle	96	61
Natural Vegetation	341	203
Garbage/Rubbish	276	221
Special Outside	23	43
Cultivated Vegetation	5	21
Other	0	0
Totals	925	684

Medical Calls by Type Breakdown		
Call Type	2021	2022
Emergency Medical Aid	10,626	10,879
Accident w/Injuries	1,212	1,265
Transfer	5	5
Non-Emergency Medical Aid & Medic Only	9,194	10,462
Totals	21,037	22,611

