

North Lancaster Neighborhood Association

Monthly Meeting

May 3, 2023 at 6:30 PM

Salem, Oregon & via Zoom

1. Call to Order / Introductions

The meeting was called to order at 6:32 PM, followed by introductions of all present in person and anyone present on the Zoom call.

Board Member	Position	Attendance
Deanna Garcia	Chair	Present
Doug Rodgers	Vice-Chair	Present – Zoom
Christine Potter	Secretary/Treasurer	Present
Shirlene Gonzalez	Parks Chair	Present – Zoom
Dennis Will	Land Use Chair	Present – Zoom
Carl Engstrom	Member at large	Present
Denise Currey	Member at large	Present
Kim Currey	Member at large	Present
Pamela Blake	Member at large	Present
Bobby Ottis	Member at large	Present
Patty Tipton	Member at large	Present
Claudine Shaw	Member at large	Present

Attendees: Irma Coleman, Sergeant Mike Baskett, Ruth Snyder, Kyle Amsberry

Neighbors: Dawn Baker, Jamie Daly, Maria Hinojos Pressey, Kirra Pressey, Khalid Haamid, Frank Lemmon

2. Approval of Minutes

The minutes from April 2023 were submitted for Board review on 4/28/2023.

Pamela Blake motioned to approve. Kim Currey seconded the motion. The minutes from April 2023 were unanimously approved.

3. Police Report – Sergeant Baskett from Salem Police Department

- a. Navigation Center is officially open this month as a low barrier option for unsheltered people. Traditional shelter models require sobriety upon entry, segregate by gender and offer little space for personal possessions or pets. The Navigation Center allows all genders and does not require sobriety on entry. Mental health assistance is provided at the center. 15 of 75 beds are reserved for short-term referrals from the police department, protocols are coming soon. The Navigation Center was funded by federal, state and county sources.
- b. Other resources: Micro-shelter is open on Turner Road which focuses on helping 18–24-year-old people experiencing homelessness. Yaquina Hall recently opened. These are resources for people who want to get off the street and access traditional resources.

Q – Now with the plethora of services, does that mean that law enforcement can require them to stay off the streets? U.S. 9<sup>th</sup> Circuit Court ruling prohibits imposing criminal penalties for sitting, sleeping or lying outside on public property for those who can't obtain shelter. Additional [information can be found here](#).

Q – *Are micro-shelters tiny homes?* They are smaller than tiny homes, about 10'x10'.

- c. General Safety & Awareness:
  - i. Park in well-lit areas; it's not recommended for a small vehicle to park between two large vehicles due to visibility.
  - ii. When walking, walk in pairs or groups. Keep your cell phone out when walking alone. Be familiar with your surroundings and be aware of who is around.
- d. Salem Police Department entered into a 30 by 30 campaign, which is intended to reach 30 percent of women in law enforcement by 2030. There are currently 26 female officers, making up 15% of the sworn staff. This is an increase from a few years ago when numbers had dwindled to 9 females.

It is important to have a police force that is reflective of the community. Having a diverse department can lead to positive outcomes in the community and provides for diversity of thought and perspective internally. SPD is also increasing outreach and recruitment to expand our diversity in all areas.

Diversity #'s:

Sworn staff: 179 officers (down 20 officers)

Gender: Female – 25 (14%) Male – 154 (86%)

Race: Asian – 2 (1.12%) Black – 4 (2.23%) Hispanic – 20 (11.17%) White – 153 (85.47%)

Professional Staff: 44.5 (down 6)

Gender: Female – 37, Male – 14

Race: Asian – 2 (3.92%) Black – 1 (1.96%) Hispanic – 6 (11.76%) Am. Indian – 1 (1.96%)

White – 41 (80.39%)

- e. Update on recent shooting at law enforcement: Resources directed to the incident right away, throughout the shift the police identified and located the vehicle and suspect. SWAT personnel took the suspect into custody about 12 hours after the incident after the suspect was shot and injured.
- f. Update on homicide at Cozy Inn in 2021. The killer was sentenced to 45 years in prison.

Homeless encampment reporting portal [HERE](#)

Sergeant Baskett can be reached for questions by email: [mbaskett@cityofsalem.net](mailto:mbaskett@cityofsalem.net)

- 4. Councilor Report: Councilor Julie Hoy – Ward 6 and/or Jose Gonzalez – Ward 5  
Neither Councilor was in attendance due to a budget meeting.
- 5. Salem Fire Department – 2023 Wildfire Outreach – Ruth Snyder, FD Community Outreach Liaison
  - a. Some areas of Salem are at greater risk from wildfire than others. It's important to learn and understand about the dangers of wind driven embers and how to prepare against them. Wildland Urban Interface (WUI) areas are geographic areas where structures and other development intermingle with vegetation and wildlands.
  - b. Mitigating Risk: Defensible Space

i. Zone 1 – 5’ around house clear mulch, dead bushes and other vegetative fuels

- ▶ The area between your home and 5 feet away.
- ▶ Needs to have low potential for ignition from flying embers.
- ▶ Use sufficiently watered, herbaceous plants such as lawn, ground cover, and flowers that are recommended for southwest Oregon;
- ▶ Rock mulches; or hard surfaces, such as brick and pavers, in this area. Keep this area free of woodpiles, wood mulches and flammable shrubs such as juniper.
- ▶ Routine maintenance tasks in this zone:
  - ▶ Remove any dead plant material that has accumulated such as leaves, needles, and twigs.
  - ▶ Keep gutters and roofs cleaned of debris.
  - ▶ Make sure any overhanging limbs are trimmed back at least 10 feet or more from the roof.

## Zone 1 = 0-5 Feet From Home Immediate Non-Combustible Zone



ii. Zone 2 – 30’ from property, keep that lean and clean too

- ▶ The portion of your property at least 30 feet from the home should be Lean, Clean, and Green.
- ▶ Lean of fire-prone, flammable vegetation.
- ▶ Maintained at a low density.
- ▶ Clean for dead vegetation or flammable debris within this area.
- ▶ Green plants kept healthy and sufficiently watered during fire season.
- ▶ This zone often has irrigation, contains ornamental plants, and should be maintained annually.
- ▶ Trim back fire-resistant shrubs.
- ▶ Prune mature trees to at least 10 feet.
- ▶ Remove dead plant material such as leaves, needles, and twigs.
- ▶ Replace flammable plants with fire-resistant plants.
- ▶ Keep grass watered (green) and mowed to 4 inches.

## Zone 2 = 0 - 30 Feet From Home Lean, Green, Clean Area



c. Mitigating Risk: Home Hardening – 6 areas of greatest risk

- i. Most vulnerable part of home is the Roof
- ii. Vents – recommend covering vents with 1/8” mesh

- iii. Keep Gutters, Eaves and Soffits clean and clear
- iv. Replace single pane windows if you can as there is less risk of embers coming in
- v. Seal any holes in Siding
- vi. Clear beneath Decks as embers can get underneath

Q – *Is Trex flammable?* Trex composite decking is fire resistant, but not fire-proof.

Q – *What about attic storage, should you keep your attic clear of items?* While the attic doesn't appear in the list of most vulnerable places, it is wise not to store flammable items there.

d. Recommendations & Resources

- i. Must have for all residents! Sign up for Marion County alerts:  
<https://www.cityofsalem.net/community/safety/emergencies-disaster-preparedness/get-community-alerts>
- ii. Low-cost, effective ways to harden your home. See handout on page 7.
- iii. Remove flammable plants. See Do Not Plant List on page 8.
- iv. Add plants that are fire-resistant. [Download booklet here.](#)

Q – *How can you protect your home against neighbors who might be fire hazards because of their overgrown brush or flammables around the home?* Code compliance is an option. [See city page here.](#)

Patty shared a handout from Marion County Emergency Management regarding their Community Wildfire Protection Plan (CWPP). They encourage citizens to respond to their survey regarding wildfire risk awareness, fire protection and preparedness, reducing property risk to wildfire, and reducing the community risk to wildfire. The handout with the link to the survey is on page 9. The survey closes October 1, 2023 at 5:00 pm.

6. Committee Reports & Board Business

- a. Transit – Doug Rodgers: Beginning Monday, May 8<sup>th</sup> some local routes on 30 minute schedule will increase to 15 minute intervals. Visit [Cherriots web page](#) for details.
- b. Traffic – Deanna Garcia: The closure on Hollywood Drive northbound is in place until November. Neighbors detour onto San Francisco.
- c. Land Use – Dennis Will: NOLA received a letter (see page 10) from a developer who intends to subdivide 1.3-acre property at 1861 Park Avenue into six lots which will include the original home.



They will soon be submitting their land use application to the City of Salem. During general discussion, concern was expressed about the number and size of homes vs the size of the intended lots, lack of parking and play areas, and the potential removal of substantial trees which could be sustaining wildlife. A contrary opinion was that it is private property and there is a housing shortage. Another board member would like to see the preservation of some green space and reduce the number of planned homes to achieve that. The board will continue the conversation via email and decide how we want to move forward expressing an opinion on the development.

Q – *Do we know when public testimony will be given to the Council?* The application hasn't been submitted yet.

- d. Parks – Shirlene Gonzalez: The Parks committee completed a walkthrough of the four parks in our neighborhood to get a sense of what is needed at each of the parks. It is time in the Salem Parks grant cycle to submit projects for funding. Projects are usually mid-size (\$500 – 3,000) and not capital improvements projects. The following are appropriate for SPF grants applications:
- Livingston: Add a bike rack; benches for the players; a pollinator garden.
  - Lansing: Picnic tables are in need of replacement; benches for players are in need of repair/replacement; replacing a soft trail would be nice for walking neighbors; add a bike rack; pollinator garden; mobile soccer goals like Brown Rd Park.
  - McKay: Maintenance of soft trail.
  - Brown: None, as it is on list for capital improvements.

The Parks Committee chair recommended putting our effort towards Lansing Park, specifically the picnic tables and benches.

MOTION from Dennis Will that NOLA submit the Lansing Park picnic table and sports benches projects for funding. The motion was seconded by Claudine Shaw and was approved by unanimous vote of the board.

Patty provided the following additional updates:

- Salem Seekers program is putting over 400 glass birds in some Salem parks over the summer as a way to encourage people to use parks this summer. Examples of the birds can be seen at the Saturday Market blown glass booth.
  - Salem community markets are open (see flier on page 12.)
  - [Salem for Refugees](#) needs Restart Kits (bins of new household items provided to furnish homes for our newly arriving refugee families.) [Use this link to the flyer for a list of the needed kits and instructions for putting them together.](#)
- e. Bylaws sub-committee – no update
- f. NOLA Board Survey results were emailed to board members. Next step is to send a survey to our general community. The following questions were prepared:
- i. Are you a resident, business owner or employee of a business in NOLA?
  - ii. What are your concerns for NOLA?
  - iii. What topics would you like covered in our monthly meetings?
  - iv. What could we do to improve our monthly meetings?
  - v. Do you follow us in social media or do you receive our email updates?

Suggested inclusions are NOLA boundaries, and questions such as preferred communication method and whether respondent prefers to attend meetings via Zoom.

MOTION from Kim Currey to proceed with the survey to our general community as described. The motion was seconded by Bobby Ottis and was approved unanimously by the board.

7. Open Forum for any discussion
- a. Neighbors of 2515 Hollywood Dr NE described the eyesore and unkempt property as having overgrown brush, dozens of nutria, decrepit outbuildings, piled up garbage, rats, burning of toxic materials, and car alarms in the middle of the night among the nuisance issues disturbing their neighborhood. They wanted to know what they could do. We referred them to Chris at Code Enforcement and recommended they go to the city portal and [submit a report](#) including photos if available. Other neighbors may view the property and submit a report if they wish.
  - b. Guest Maria Hinojos Pressey introduced herself and let NOLA know she is on both the Cherriots board and the Salem Keizer School Board and was available for questions as needed.
  - c. National Night Out – NOLA’s event will take place August 2<sup>nd</sup>, which is the day after National Night Out. Volunteers are needed right away, as planning meetings for the event will begin mid-May. Contact Deanna to get involved.
8. Close of Meeting / Adjournment
- There being no further business before the Board, the meeting was adjourned at 8:17PM.

# Low Cost Retrofit List for Fire Prevention

## 10 Low Cost Ways to Harden Your Home to Fires

1. When it is time to replace your roof, replace with a fire-resistant Class A roof material.
2. Block any spaces between your roof covering and sheathing (bird stops).
3. Install noncombustible corrosion resistant metal gutter covers on gutters to prevent the accumulation of leaves and debris in the gutter.
4. Cover your chimney and stovepipe outlets with a noncombustible corrosion resistant metal mesh screen ([spark arrestor](#)), with 3/8-inch to 1/2-inch openings.\*\*
5. Cover all vent openings with 1/16-inch to 1/8-inch noncombustible corrosion resistant metal mesh screens.\*\*
6. Caulk and plug gaps greater than 1/16-inch around exposed rafters and blocking to prevent ember intrusion.
7. Inspect exterior siding for dry rot, gaps, cracks and warping. Caulk or plug gaps greater than 1/16-inch in siding and replace any damaged boards, including those with dry rot.
8. Install weather stripping to gaps greater than 1/16-inch in garage doors to prevent ember intrusion. The stripping must be compliant with UL Standard 10C.
9. When it's time to replace your windows, replace them with multi-paned windows that have at least one pane of tempered glass.
10. When it's time to replace your siding or deck, use compliant noncombustible, ignition-resistant, or other [materials approved by the OSFM](#).

## 5 No Cost Ways to Create Defensible Space and Enhance the Effects of a Hardened Home

1. Regularly clean your roof, gutters, decks, and the base of walls to avoid the accumulation of fallen leaves, needles and other flammable materials (see [Defensible Space](#) for more details).
2. Ensure that all combustible materials are removed from underneath, on top of, or within five feet of a deck.
3. Remove vegetation or other combustible materials that are within five feet of windows and glass doors.
4. Replace wood mulch products within five feet of all structures with noncombustible products such as dirt, stone, or gravel.
5. Remove all dead or dying grass, plants, shrubs, trees, branches, leaves, weeds, and pine needles within 30 feet of all structures or to the property line.

\*This list was developed as a best practices guide and to assist homeowners to ensure their home is more ignition-resistant from wildfires. Low cost can be subjective. Some of these items are based on upgrading to more stringent materials when that feature is up for replacement due to normal maintenance or lifespan, i.e. roofs.

\*\* Do not use fiberglass or plastic mesh as they can melt or burn.

Updated 1/31/2020

## Do Not Plant List

<i>Common Name</i>	<i>Botanical Name</i>
<b><u>Trees</u></b>	
Acacia	<i>Acacia</i> spp.
Arborvitae	<i>Thuja</i> spp.
Australian tea tree	<i>Leptospermum laevigatum</i>
Black walnut	<i>Juglans nigra</i>
California bay	<i>Umbellularia californica</i>
California pepper tree	<i>Schinus molle</i>
Cedar	<i>Cedrus</i> spp.
Cypress	<i>Cupressus</i> spp.
Eucalyptus	<i>Eucalyptus</i> spp.
False cypress	<i>Chamaecyparis</i> spp.
Fir	<i>Abies</i> spp.
Giant chinquapin	<i>Chrysolepis chrysophylla</i>
Hemlock	<i>Tsuga</i> spp.
Honeylocust	<i>Gleditsia triacanthos</i>
Juniper	<i>Juniperus</i> spp.
Leyland cypress	<i>Cupressus x leyandii</i> (used as a hedge)
Palm	ALL genera
Paperbark tree	<i>Melaleuca</i> spp.
Pine	<i>Pinus</i> spp.
Spruce	<i>Picea</i> spp.
Sweet gum	<i>Liquidambar styraciflua</i>
Tamarisk	<i>Tamarix</i> spp.
Tan Oak	<i>Notholithocarpus densiflorus</i>
Tree of heaven	<i>Ailanthus altissima</i>

<i>Common Name</i>	<i>Botanical Name</i>
<b><u>Shrubs/Vines</u></b>	
Bamboo	ALL genera
Bluebeard	<i>Caryopteris</i> spp.
Broom	ALL genera
California buckwheat	<i>Eriogonum fasciculatum</i>
Chamise or greasewood	<i>Adenostoma fasciculatum</i>
Chaparral pea	<i>Pickeringia montana</i>
Coyote brush	<i>Baccharis</i> spp.
Evergreen huckleberry	<i>Vaccinium ovatum</i>
Gas plant	<i>Dictamnus albus</i>
Gorse	<i>Ulex europaeus</i>
Honeysuckle	<i>Lonicera japonica</i> 'Halliana'
Hopbush or hopseed bush	<i>Dodonaea viscosa</i>
Juniper	<i>Juniperus</i> spp.
Manzanita	<i>Arctostaphylos</i> spp. (Ground cover variety okay)
New Zealand tea tree	<i>Leptospermum scoparium</i>
Rosemary	<i>Rosmarinus</i> spp.
Sagebrush	<i>Artemesia californica</i>
Scrub oak	<i>Quercus berberidifolia</i>
Grevillea	<i>Grevillea noellii</i>
Yew	<i>Taxus</i> spp. (Also a tree)



# Marion County Community Wildfire Protection Plan (CWPP)

## We Need Your Assistance

To meet the objectives of the CWPP, we need all communities from Marion County to help us in the development of the CWPP. To do this the Marion County CWPP Advisory Committee created a survey that is comprised of four sections that include:

- ◆ Wildfire risk awareness,
- ◆ Fire protection and preparedness,
- ◆ Reducing property risk to wildfire, and
- ◆ Reducing the community risk to wildfire.

The survey is an opportunity for the citizens and communities of Marion County to provide valuable data that will be used to help drive the CWPP in future projects.

Here is the link to the survey, which closes on October 1, 2023 at 5:00 p.m.

Marion County CWPP survey link—or use the QR code on the right

<https://arcg.is/1Xb9nG>



Emergency Management



## What is a Community Wildfire Protection Plan?

A Community Wildfire Protection Plan (CWPP) helps communities work together to achieve common goals and deal with often controversial issues. CWPPs have offered many valuable opportunities to communities, allowing them to identify local priorities, community protection, and resource management. In addition to enhancing safety and reducing risk to structures and watersheds, communities with CWPPs are also given priority for U.S. Forest Service and Bureau of Land Management funding for hazardous fuels reduction projects as authorized under the Healthy Forest Restoration Act of 2003 (HFRA). In the end, CWPPs have helped communities better protect themselves from fire risk and better manage their forested landscape.

The collaborative efforts of foresters from federal and state agencies, rural fire departments, private landowners, local government agencies, volunteer organizations, and concerned citizens who live in the wildland-urban interface, have resulted in signed CWPPs in every county and many communities across Oregon.

The Marion County Community Wildfire Protection Plan (CWPP) is a collaborative agreement between the Oregon Department of Forestry (ODF), the Oregon State Fire Marshal's Office (OSFM), Marion County, Marion County Fire Defense Board, local firefighting agencies and Federal partners (United States Forest Service (USFS), and Bureau of Land Management (BLM)). This document strives to:

- ⇒ Provide countywide leadership through partnerships to implement wildland-urban interface fire mitigation strategies in Marion County.
- ⇒ Improve community strategies for reducing the impacts of wildland-urban interface fires.
- ⇒ Promote wildfire risk reduction activities for private and public land in Marion County.

The CWPP is non-regulatory, meaning it does not set forth any new policy. This plan is designed to be an action plan and depends upon people and partnerships to carry it forward. The guiding principles of the plan include:

- ⇒ A foundation to help improve cross-boundary coordination between agencies to reduce negative wildfire impacts through the pursuit of fire-resilient landscapes and communities in Marion County.
- ⇒ Identification and prioritization of areas for hazardous fuel reduction and wildfire resilience projects through the creation of county-level risk maps.
- ⇒ Landowner resources for understanding wildfire risk in our community, including maps and recommended actions homeowners and local communities, can take to help reduce their structure's exposure to wildfire risk (structural ignitability).
- ⇒ A way to meet federal and state planning requirements and qualify for assistance programs.

### **CWPP Coordinator**

Mike Hintz  
Marion County Emergency  
Management  
mhintz@co.marion.or.us  
(503) 365-3186



April 13, 2023

Deanna Garcia, Chair  
Dennis Will, Land Use Chair  
North Lancaster Neighborhood Association (NOLA)  
Salem, OR 97301

**RE: Proposed Subdivision at 1861 Park Ave. NE 97301**

Dear Chairpersons and Members of the North Lancaster Neighborhood Association

Udell Engineering and Land Surveying, LLC, on behalf of JENRAE Properties, LLC will soon be submitting a land use replat application to the City of Salem for approval of a six-lot residential subdivision with associated site, utility, and access improvements.

The subject property is approximately 0.82-acres in size, zoned RS (Single Family Residential), and located at 1800 and 1861 Park Avenue NE (Marion County Assessor's Map No. 073W24BA Tax Lots 8000 and 8100. The site is located west of Park Avenue NW between Sunnyview Road NE and Market Street NE.

As shown in enclosed tentative lot layout the following are anticipated to be included in the application submittal:

- Retention of the existing dwelling
- Lot sizes ranging from 7,434 square feet to 4,000 square feet.
- Two lots will with direct access to Park Avenue. Four other lots utilizing a shared accessway to Park Avenue.

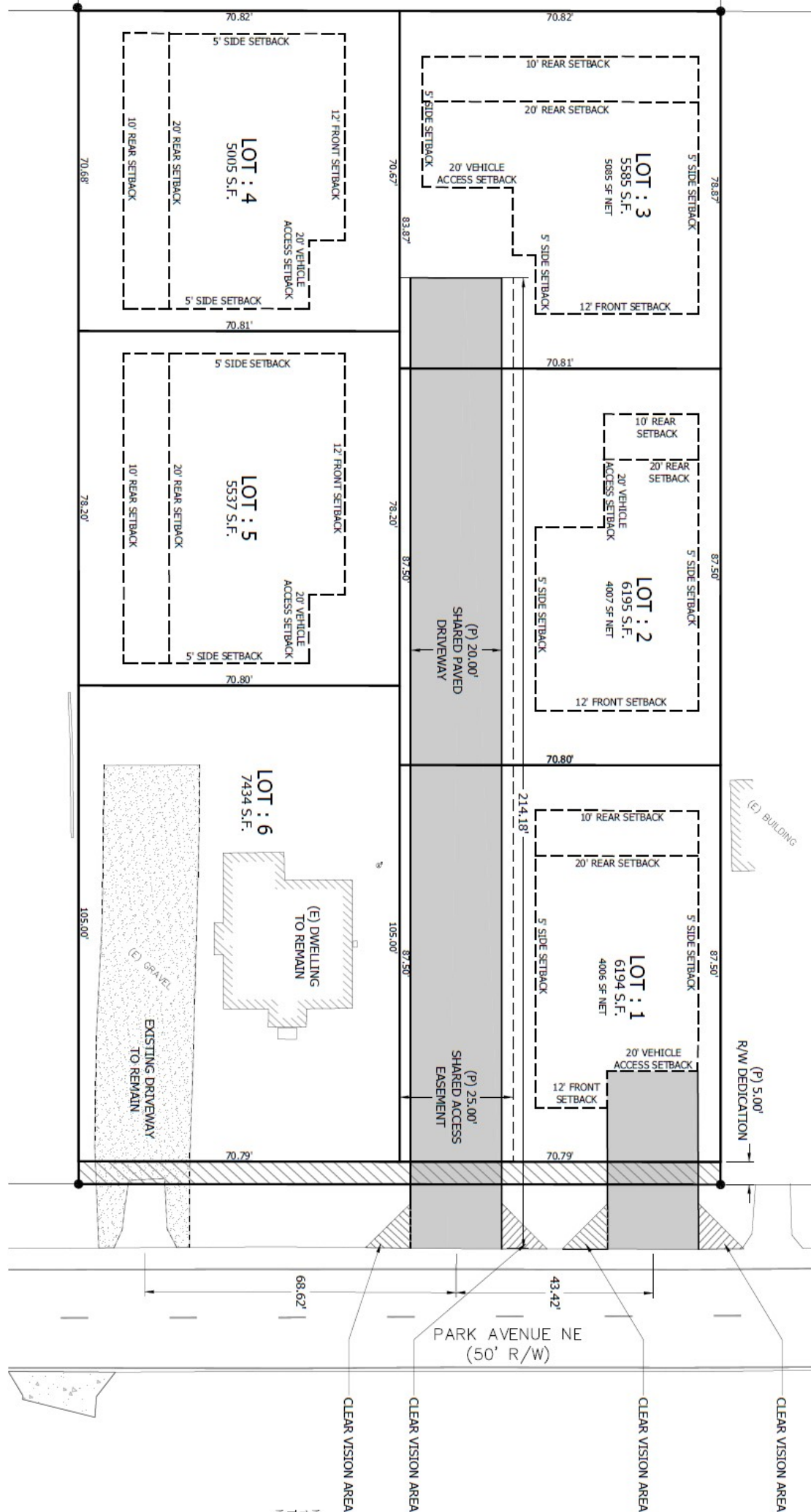
Enclosed is the tentative lot layout. Please feel free to reach out should you have any questions or comments about the proposed development.

Sincerely,

*Laura LaRoque*

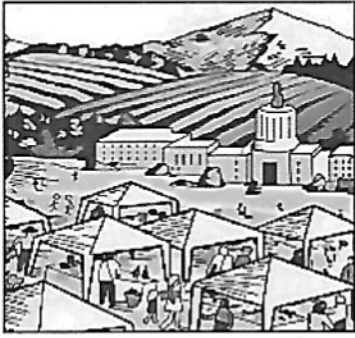
Laura LaRoque, Land Use Planner  
Udell Engineering and Land Surveying, LLC  
63 E. Ash Street  
Lebanon, OR 97355  
(541) 900-8661  
laura@udelleng.com

Enclosure



MA  
18  
TH  
WA

Explore ~ Discover ~ Experience



# SALEM COMMUNITY MARKETS

*All products proudly... handmade ~ handcrafted ~ homegrown*

Fresh Local Produce • Flowers • Dairy • Meat  
Artisan Crafts • Artisan Foods • Live Music  
Community Events • Free Parking

## **MONDAY HOSPITAL MARKET**

*May thru September ~ 9:30 am - 1:30 pm*

Salem Hospital @ 880 Oak Street

## **WEDNESDAY CHEMEKETA MARKET**

*May thru September ~ 3:00 - 7:00 pm*

Chemeketa Community College Agricultural Complex

New  
Mkt

## **THURSDAY W SALEM FARMERS MARKET**

*May thru mid-September ~ 3:00 - 7:00 pm*

Greenway on Edgewater between Kingwood & Gerth

## **SALEM SATURDAY MARKET**

*March thru October ~ 9:00 am - 2:00 pm*

State of OR Green Parking Lot - 865 Marion Street SE

## **SALEM HOLIDAY MARKET**

*2nd Weekend in December*

Oregon State Fairgrounds @ 2330 17<sup>th</sup> St NE

[www.salemcommunitymarkets.com](http://www.salemcommunitymarkets.com)  
[salemcommunitymarkets@gmail.com](mailto:salemcommunitymarkets@gmail.com)  
503-585-8264