

Introduction to Marion County's Waste Stream

Dakota Tangredi



Marion County Waste Reduction Program

- Free technical assistance for businesses, local jurisdictions, public and community groups around waste reduction, recycling & composting
- Environmental education around impacts of materials & data-driven tools to foster resourcefulness and impact



Dakota Tangredi



Rachel VanWoert



Marion County
OREGON

Volunteer Program Website

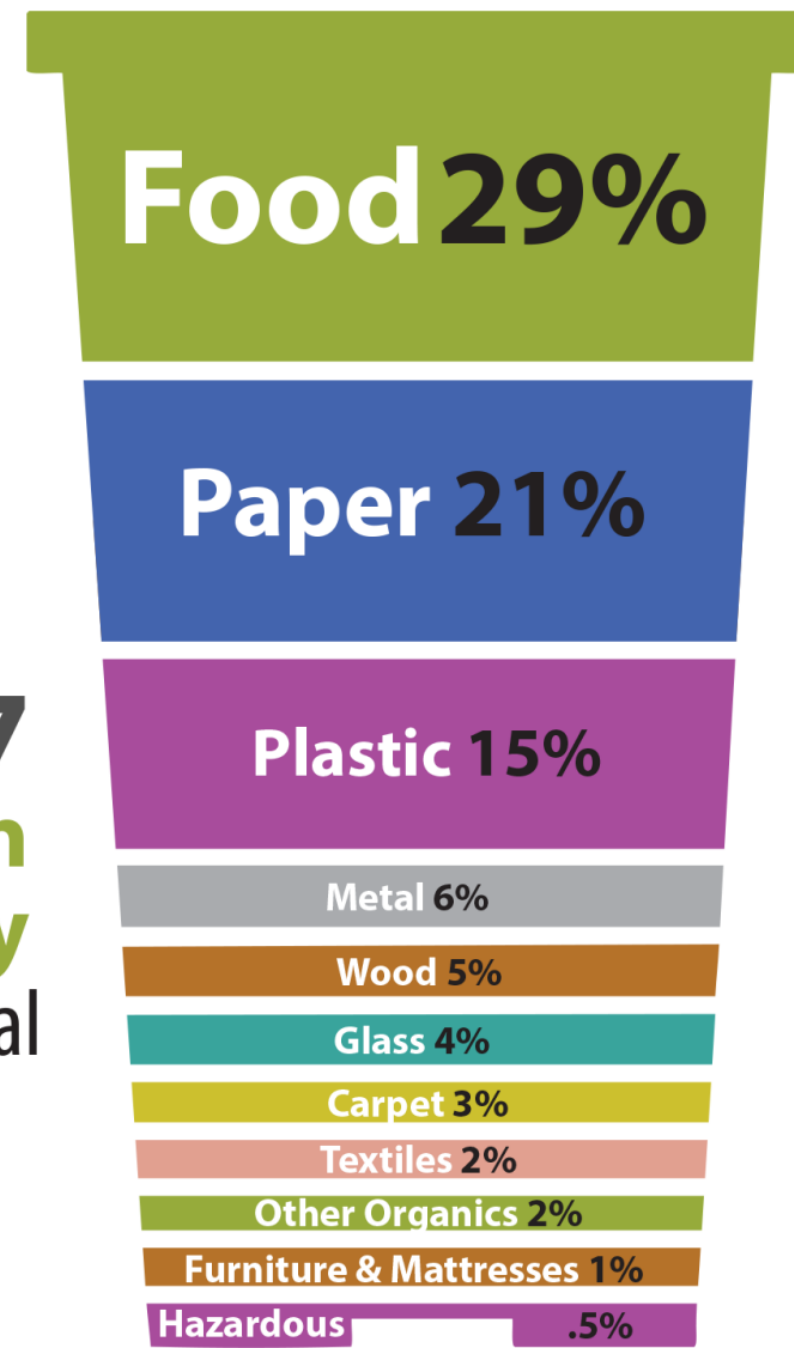


What's in our Garbage?

2017 Marion County Curbside Residential Waste



2017 Marion County Commercial Waste



Video Discussion Questions

Despite rates of recycling increasing over the years, what else has increased?

How does an increase in disposal affect recovery (recycle) rate?

How did National Green Sword challenge our assumptions around what is “really” recyclable in the U.S.?



Marion County
OREGON

Contact Information

Dakota Tangredi

971-375-8906 (work cell)

Dtangredi@co.marion.or.us

Rachel VanWoert

503-588-5036 x4159

RVanWoert@co.marion.or.us



Marion County
OREGON

Course Topics

- Life cycle impacts of materials
- Food waste
- Extended producer responsibility
- Repair Fairs/Culture
- Recycle list
- Salem Climate Action Plan
- Community building
- Greenwashing
- Behavior change and action
- Waste reduction
- Others we want covered?



Proposed Solid Waste Service Rates Effective January 1, 2024, and January 1, 2025

Solid Waste Committee

September 21, 2023

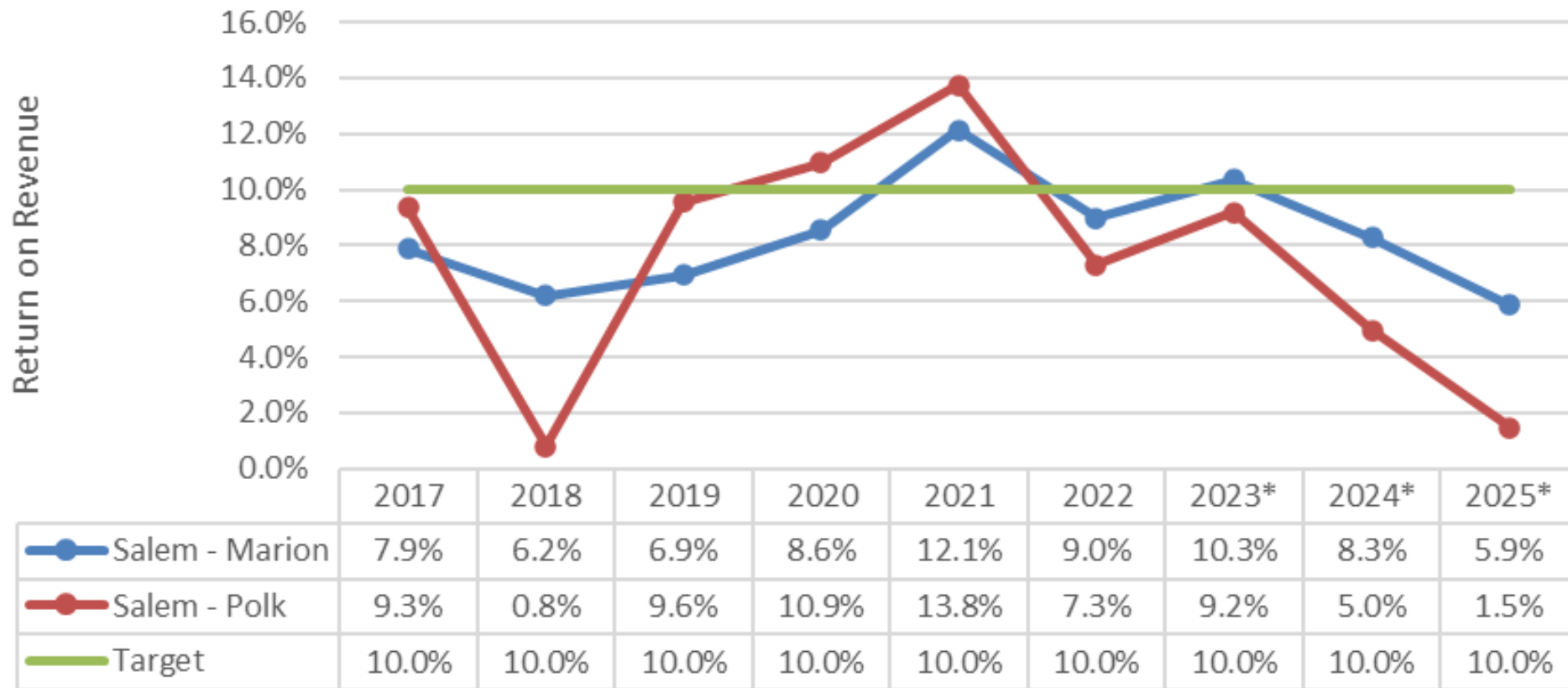
Policy Considerations

- ▶ “Reasonable operating margin”
 - ▶ Pre-Tax Return on Revenue - 10% (range or target):
- ▶ “Just, fair, reasonable, and adequate... prohibit rate preferences and other discriminatory practices.”
 - ▶ No subsidization between lines of business or service levels
- ▶ Rate setting annually or bi-annually

Rate Review Process

- ▶ Cost of service analysis includes:
 1. Test data for accuracy
 2. Model future revenues and expenses
 3. Project return on revenue
 4. Evaluate proposed rate adjustments

Historical and Projected Returns (with no increase)



* Projected 2023; Projected 2024 and 2025 with no rate increase

Projected Returns by Line of Business

(with no rate increase 2024 and 2025)

| Line of Business | 2023 | 2024 | 2025 |
|-----------------------------|--------------|-------------|-------------|
| -Cart (Residential) | 8.0% | 5.8% | 2.7% |
| -Container (Commercial) | 11.6% | 9.8% | 7.7% |
| -Drop Box | 12.8% | 11.4% | 9.9% |
| Salem - Marion Total | 10.3% | 8.3% | 5.9% |
| -Cart (Residential) | 9.2% | 5.6% | 1.5% |
| -Container (Commercial) | 9.4% | 3.5% | -0.3% |
| -Drop Box | 8.5% | 3.5% | -0.7% |
| Salem - Polk Total | 9.2% | 5.0% | 1.5% |

Combined Rate Proposal by Zone

| | 2024 | 2025 |
|----------------|-------|-------|
| Salem - Marion | 2.09% | 4.27% |
| Salem - Polk | 6.07% | 3.99% |

| Cost Factors | 2023 | 2024 | 2025 |
|-----------------------------------|-------|-------|------|
| Fuel | -9.5% | 11.8% | 0.0% |
| Labor | 5.0% | 5.0% | 5.0% |
| Medical Insurance | 15.8% | 6.5% | 6.5% |
| Disposal (expanded on next slide) | 5.9% | 0.7% | 0.8% |
| Vehicle Depreciation | 4.3% | 2.9% | 2.5% |
| General Inflation | 4.3% | 2.9% | 2.5% |

| Disposal | 2023 | 2024 | 2025 |
|-----------------------------------|-------------|-------------|-------------|
| Combined Disposal Increase | 5.9% | 0.7% | 0.8% |
| Covanta-Marion (Garbage) | - | - | - |
| Coffin Butte (Garbage) | 3.9% | 7.6% | 7.1% |
| Yard Debris/Food Waste | 23.2% | 3.2% | 3.1% |
| Commingle Recycling | 60.3% | - | - |

Salem - Marion Proposed Rate Increases

| Line of Service | Jan-2024 | Jan-2025 |
|-----------------------------------|-----------------|-----------------|
| Cart Service - mostly residential | 4.40% | 4.27% |
| Container Service - commercial | 0.00% | 2.80% |
| Drop Boxes | 0.00% | 0.00% |
| Combined | 2.09% | 2.85% |

Salem - Polk Proposed Rate Increases

| Line of Service | Jan-2024 | Jan-2025 |
|-----------------------------------|-----------------|-----------------|
| Cart Service - mostly residential | 5.34% | 3.78% |
| Container Service - commercial | 7.86% | 4.33% |
| Drop Boxes | 7.79% | 4.79% |
| Combined | 6.07% | 3.99% |

| Salem-Marion | Current | Proposed 2024 | | | Proposed 2025 | | |
|----------------------------|----------------|----------------------|--------------------------|----------------------|----------------------|--------------------------|----------------------|
| Residential Cart Service | 2023 | 2024 | Bi-Monthly Bill Variance | Annual Bill Variance | 2025 | Bi-Monthly Bill Variance | Annual Bill Variance |
| 20 Gallon w/o Yard Debris* | \$43.30 | \$45.20 | \$ 1.90 | \$11.40 | \$47.10 | \$1.90 | \$11.40 |
| 20 Gallon EOW** | \$44.20 | \$46.10 | \$ 1.90 | \$11.40 | \$48.10 | \$2.00 | \$12.00 |
| 20 Gallon | \$61.90 | \$64.60 | \$ 2.70 | \$16.20 | \$67.40 | \$2.80 | \$16.80 |
| 35 Gallon | \$69.50 | \$72.60 | \$ 3.10 | \$18.60 | \$75.70 | \$3.10 | \$18.60 |
| 65 Gallon | \$90.70 | \$94.70 | \$ 4.00 | \$24.00 | \$98.70 | \$4.00 | \$24.00 |

* Standard cart service includes garbage, recycling, and yard debris.

How Much Would My Bill Go Up?

| Salem-Polk | Current | Proposed 2024 | | | Proposed 2025 | | |
|----------------------------|----------------|----------------------|--------------------------|----------------------|----------------------|--------------------------|----------------------|
| Residential Cart Service | 2023 | 2024 | Bi-Monthly Bill Variance | Annual Bill Variance | 2025 | Bi-Monthly Bill Variance | Annual Bill Variance |
| 20 Gallon w/o Yard Debris* | \$40.70 | \$42.90 | \$ 2.20 | \$13.20 | \$44.50 | \$1.60 | \$9.60 |
| 20 Gallon EOW** | \$34.70 | \$36.60 | \$ 1.90 | \$11.40 | \$38.00 | \$1.40 | \$8.40 |
| 20 Gallon | \$51.50 | \$54.30 | \$ 2.80 | \$16.80 | \$56.40 | \$2.10 | \$12.60 |
| 35 Gallon | \$58.10 | \$61.20 | \$ 3.10 | \$18.60 | \$63.50 | \$2.30 | \$13.80 |
| 65 Gallon | \$70.30 | \$74.10 | \$ 3.80 | \$22.80 | \$76.90 | \$2.80 | \$16.80 |

* Standard cart service includes garbage, recycling, and yard debris.

How Much Would My Bill Go Up?

Medical Waste

| Pre-Tax Return on Revenue Service Level | Actual | Projected | | |
|--|--------------|--------------|---------------|---------------|
| | 2022 | 2023 | 2024 | 2025 |
| Low-Volume (1-59 boxes/month) | 8.2% | -0.6% | -14.8% | -31.6% |
| High-Volume (60+ boxes/month) | -12.6% | -8.5% | -16.8% | -24.5% |
| Hospital Collection | -2.1% | -2.4% | -7.8% | -10.9% |
| Combined | -2.1% | -4.2% | -13.9% | -23.7% |

| Medical Waste Disposal Fee | 2023 | 2024 | 2025 | 2026 |
|----------------------------|---------|----------|----------|----------|
| MC Adopted Rate \$/Ton | \$87.45 | \$150.00 | \$225.00 | \$300.00 |
| % Increase | 0.0% | 71.5% | 50.0% | 33.3% |

Medical Waste

| Proposed Rate Increase | Jan-2024 | Jan-2025 |
|-------------------------------|-----------------|-----------------|
| • Low-Volume | 21.5% | 2.8% |
| • High-Volume | 32.3% | 6.5% |
| • Hospital Collection | 29.9% | 14.3% |
| Combined Total | 28.8% | 8.4% |

Summary of Proposed Rate Increases

| Salem - Marion | Jan-2024 | Jan-2025 |
|-------------------------------------|-----------------|-----------------|
| • Cart Service - mostly residential | 4.40% | 4.27% |
| • Container Service - commercial | - | 2.80% |
| • Drop Boxes | - | - |
| Combined Total | 2.09% | 2.85% |
| Salem - Polk | Jan-2024 | Jan-2025 |
| • Cart Service - mostly residential | 5.34% | 3.78% |
| • Container Service - commercial | 7.86% | 4.33% |
| • Drop Boxes | 7.79% | 4.79% |
| Combined Total | 6.07% | 3.99% |
| Medical Waste | Jan-2024 | Jan-2025 |
| • Low-Volume | 21.5% | 2.8% |
| • High-Volume | 32.3% | 6.5% |
| • Hospital Collection | 29.9% | 14.3% |
| Combined Total | 28.8% | 8.4% |

NEED HELP PAYING YOUR GARBAGE BILL??



Participating Garbage Haulers

- D&O Garbage & Recycling
- Loren's Sanitation & Recycling Service, Inc.
- Pacific Sanitation, Inc.
- Republic Services Inc (Marion Co and Salem)
- Suburban Garbage Services
- Valley Recycling & Disposal

To find your local Hauler please visit:

<https://mrtrashrecycles.com/>



City of Salem Residents

Garbage Service Rate

Discount Program

Who is Eligible?

- ✓ Households with a garbage account with a participating garbage hauler
- ✓ Account Holder (name on account) must live in household
- ✓ Minimum of 1 Senior (60+) and/or Disabled resident in the household
- ✓ Gross income is at or below 60% Oregon median income

Automatic Eligibility if you...

- ✓ Are currently enrolled in the City of Salem Utility Rate Relief program
And/Or
- ✓ Have received Energy Assistance (LIHEAP) from Energy Services for the current program year. **If you would like to apply for Energy Services, please call 503-588-9016 or come in to: 1850 45TH Ave. NE Suite 101 Salem, OR 97305**

To apply for the 10% discount: Contact your local garbage hauler and provide either:

-Water Bill showing enrollment in the City of Salem Utility Rate Relief program

-Current program year Energy Assistance LIHEAP receipt

▶ Reduce Contamination

▶ Empty

▶ Clean

▶ Dry

▶ Recycle Guide

▶ MCRecycleGuide.net

▶ Find Your Hauler

▶ mrtrashrecycles.com

RECYCLE RIGHT

MIXED RECYCLING GUIDE



Paper & Cardboard

Office paper/junk mail
Cereal-type Boxes
Greeting Cards
(no foil or glitter)
Magazines
Newspaper
Phone Books
Paperback Books
Paper Bags

Papel y Cartón

Papel de oficina/ Correo no Deseado
Cajas de cereal
Tarjetas de felicitación
(sin aluminio o glitter)
Revistas
Periódicos
Libros telefónicos
Libros de tapa blanda
Bolsas de papel



Plastics

Bottles
Jugs

Plásticos

Botellas
Gallones



Metal

Steel (tin) cans
Aluminum cans

Metal

Latas de acero (estaño)
Latas de aluminio



i
There may still be opportunities to recycle some items that can not be placed into the mixed recycling roll cart. Visit mcRecycleGuide.net to learn of other possible options.

i
Todavía puede haber oportunidades para reciclar algunos artículos que no pueden colocarse en el bote del reciclaje mixto. Visita mcRecycleGuide.net para conocer otras opciones posibles.

EMPTY, CLEAN, DRY

VACÍO, LIMPIO, SECO





Curbside Recycling

PLACE ROLL CARTS AT THE CURB 4 FEET APART FROM OTHER ITEMS BY 6 AM ON COLLECTION DAY
MIXED RECYCLING IS COLLECTED EVERY OTHER WEEK -- REFER TO COLOR CODED CALENDAR



Mixed Organics

These Items Go In The
MIXED ORGANICS ROLL CART:

All Food

Breads, Grains, Coffee
Grounds, Tea Leaves, Dairy
Products, Egg Shells, Bones,
Fruits, Vegetables, Meats,
Proteins, Seafood & Shells



Some Paper

Coffee Filters, Tea Bags,
Food-soiled Napkins, Paper
Towels, & Pizza Boxes (No
Frozen Food Boxes)



Plants

Grass Clippings, Yard
Prunings, Leaves, Pine
Needles, Weeds, Flowers
& Floral Trimmings (No
Poison Oak)



NOTICE

- All mixed organics must fit inside the roll cart with lid completely closed
- Please do not place organics in plastic bags
- Unacceptable or incorrectly prepared materials will be charged a contamination fee

Mixed Recycling

These Items Go In The
MIXED RECYCLING ROLL CART:

Paper & Non-Waxed Cardboard

INCLUDING
Junk Mail
Gift Wrap (No foil, Ribbons & Bows)
Magazines
Newspaper
Paperboard
Phone Books & Paperback Books
Office Paper



Plastics *Rinse First!*

Plastic Bottles larger than 12 oz
Plastic jugs larger than 12 oz
(discard caps and pumps)



Metal

Tin & Aluminum Cans - *Rinse first!*
Paper Labels not required to be removed but can be added to the cart separately



NOTICE

- All mixed recyclables must fit inside the roll cart with lid completely closed
- Please do not place recyclables in plastic bags
- Unacceptable or incorrectly prepared materials will be charged a contamination fee

Small Recycling Bin

These Items Go In The
SMALL RECYCLING BIN:

Household Batteries

Alkaline, rechargeable, and small button cells. Sizes AAAA through D, 6 Volt - 9 Volt. Must be sealed in a zip-sealed bag.



Usable Latex Paint and Oil Based Paint

Place up to 2, one-gallon labeled cans. Please; NO rusty cans!



Used Motor Oil

In a sealed, leak-proof, plastic screw-top container.



Antifreeze

Place into screw-top see-thru plastic jug. Keep separate from motor oil.



Glass Bottles & Jars

Please keep bottle and jars empty, clean, and dry!
No other types of glass please.



Vegetable Cooking Oil

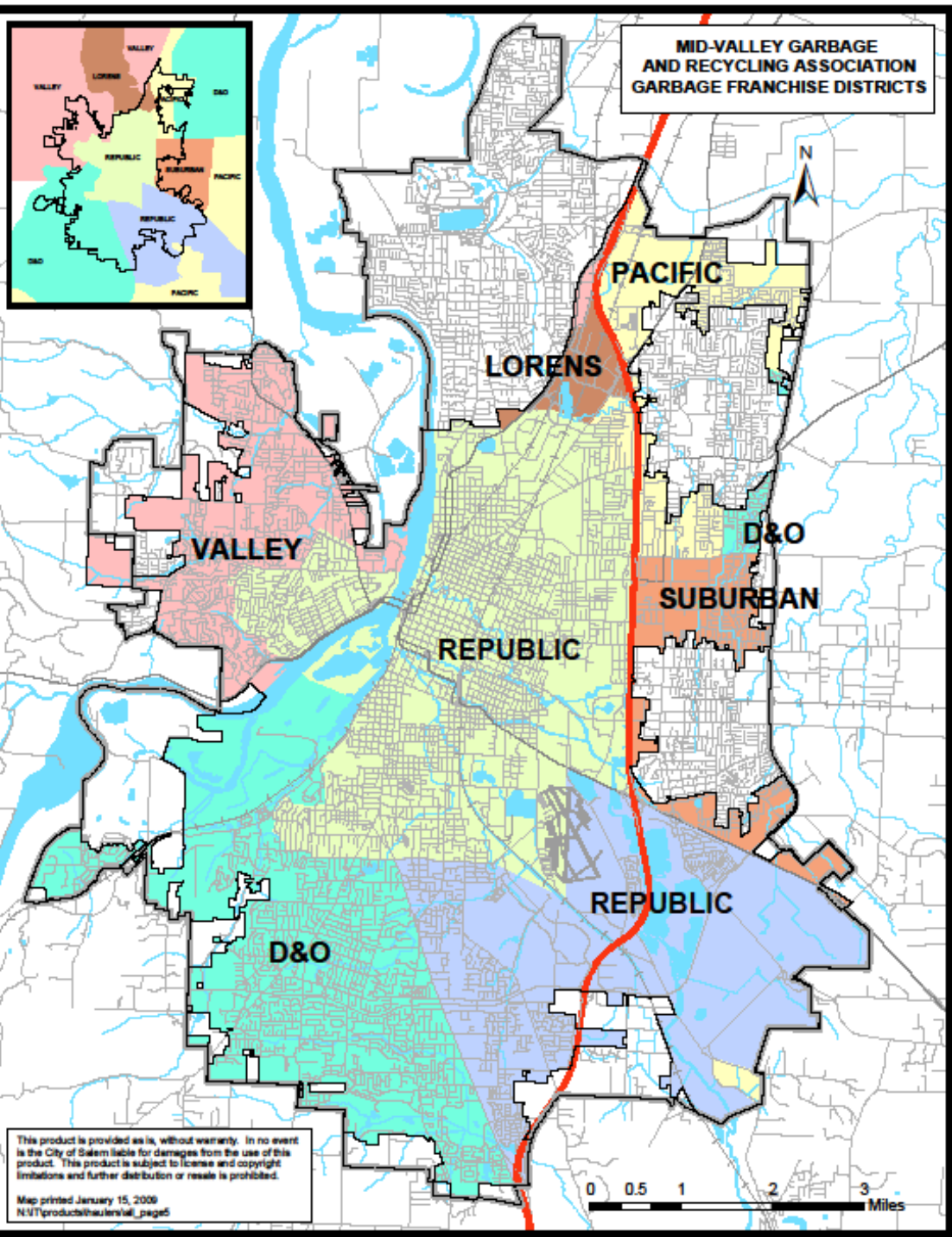
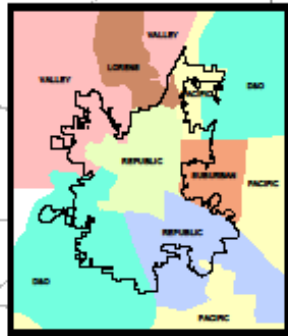
Place up to 2 gallons of cooled oil into original or clean see-thru plastic screw-top container.



IMPORTANT

The items above must be placed inside the small recycling bin

MID-VALLEY GARBAGE
AND RECYCLING ASSOCIATION
GARBAGE FRANCHISE DISTRICTS



This product is provided as is, without warranty. In no event is the City of Salem liable for damages from the use of this product. This product is subject to license and copyright limitations and further distribution or resale is prohibited.

Map printed January 15, 2009
N:\T\products\haurer\val_page5