

**TO:** HISTORIC LANDMARKS COMMISSION

**THROUGH:** Lisa Anderson-Ogilvie, AICP, Deputy Community Development Director and Planning Administrator

**FROM:** Kimberli Fitzgerald, AICP, Historic Preservation Officer

**SUBJECT:** Salem Heritage Neighborhood – South Central Association of Neighbors (SCAN)

**ISSUE:**

Request to Designate South Central Association of Neighbors (SCAN) as a Salem Heritage Neighborhood

**RECOMMENDATION:**

Staff recommends that the HLC designate South Central Association of Neighbors (SCAN) as a Salem Heritage Neighborhood.

**SUMMARY AND BACKGROUND:**

The Salem Neighborhood Heritage Program was originally authorized by City Council in 2014 for implementation by the Historic Landmarks Commission (HLC) as part of their public outreach and education program. This program is intended to encourage Salem neighborhoods to celebrate their history and provide an opportunity for them to engage in a positive way with the City's Historic Preservation Program. The City of Salem currently has three designated Heritage Neighborhoods: Highland, SESNA and Grant.

**FACTS AND FINDINGS:**

1. *Improving Public Outreach and Community Education* is identified as Goal 1 in the 2020-2030 Historic Preservation Plan. Action item #33 *Educate neighborhoods within the Salem Heritage Neighborhood Program* is identified as an action item in the HLC's 2023 Work Plan. This action allows historic preservation staff to work with Neighborhood Associations directly to develop educational products related to their neighborhood history and teach them about the survey and designation process.
2. On July 13, 2023, the South Central Association of Neighbors (SCAN) submitted a Letter of Request to request recognition as a Salem Heritage Neighborhood. SCAN has requested that the entire boundary of the SCAN neighborhood be included in the designation.
3. Criteria:
  - a. Eligibility: Any Salem Neighborhood Association recognized by the City of Salem may apply for recognition.

Finding: The South Central Association of Neighbors (SCAN) is a recognized neighborhood association in the City of Salem. Staff recommends the HLC find that this criterion has been met.

- b. Eligibility: At least 50% of the resources within the Neighborhood Association boundary must be fifty years old or older. The neighborhood may request that only a subsection of the geographic area of the overall neighborhood be recognized.

Finding: The South Central Association of Neighbors (SCAN) has proposed that the entire geographic boundary comprising the SCAN neighborhood be included (excluding the Gaiety Hill/Bush's Pasture Park National Register District). This boundary roughly includes 1666 resources that are fifty years old or older. While currently some of these properties do not have accurate verified dates, it is estimated that 73% of the resources within this boundary are fifty years old or older. Staff recommends that the HLC find that this criterion has been met.

4. SCAN has requested the following projects as part of the Heritage Neighborhood recognition: 1) Completion of a Reconnaissance Level Survey (RLS) of architectural, historical, and cultural resources; 2) Completion of an Intensive Level Survey (ILS) by a professional historic consultant and 3) Identification of additional opportunities for enhancement, public education and awareness of SCAN's architectural, historic and cultural resources.

Staff has identified a funding source (the Certified Local Government grant) to help provide funding for this program. Assuming SCAN can dedicate a minimum of four/five volunteers who are able to assist with the RLS fieldwork, and provided funds can be secured to hire a professional consultant to complete the ILS work, staff can work with the SCAN Neighborhood's Heritage Committee throughout 2024-25 to complete SCAN's requested projects. At the end of 2025 a final summary report including the RLS and ILS information for the SCAN Heritage neighborhood will be provided to the HLC along with recommendations for potential future historic property designations and additional educational projects.

## **HLC Alternatives**

The HLC has the following alternatives:

1. **Additional Information/No Action.** The HLC is not required to take any action at this time, additional information may be requested to assist the HLC in making their determination.
2. **Designation.** Should the HLC find that the applicant has made the case for designation as a Salem Heritage Neighborhood the HLC can authorize staff to draft a letter of designation be sent to the South Central Association of Neighbors (SCAN).
3. **No Designation.** Alternatively, should the HLC find that the applicant has not made the case for designation as a Salem Heritage Neighborhood, the HLC can authorize staff to

draft a letter to the South Central Association of Neighbors (SCAN) declining their request to designate the neighborhood.

- Attachment: (A) Salem Heritage Neighborhood Program Guidelines  
(B) South Central Association of Neighbors (SCAN) Request Letter  
(C) South Central Association of Neighbors (SCAN) Heritage Neighborhood Proposed Boundary Map

## Salem Heritage Neighborhood Program Guidelines

### MISSION

To encourage Salem neighborhoods to learn about the history of their neighborhood and provide an opportunity for them to engage in a positive way with the City's Historic Landmarks Commission and the City of Salem's historic preservation program.

### RECOGNITION PROCESS

1. Recognition:

Should a Salem neighborhood wish to be recognized as a Salem Heritage Neighborhood, they must submit a request for recognition to the Salem Historic Landmarks Commission (HLC).

2. Eligibility

**WHO:** Any Salem Neighborhood Association recognized by the City of Salem may apply for recognition.

**AGE:** At least 50% of the resources within the Neighborhood Association boundary must be fifty years old or older. The neighborhood may request that only a subsection of the geographic area of the overall neighborhood be recognized. If this is the case, the Neighborhood request must include a map indicating the subarea as well as a letter of support explaining the reason and justification for recognition of the smaller area from the Neighborhood Association Board.

### BENEFITS

Once a neighborhood has been selected for recognition as a Salem Heritage Neighborhood, the HLC will work with the Neighborhood Association to identify which products the neighborhood would like to receive during that calendar year. Options include (but are not limited to):

*Wayfinding Signage*

*Historic Calendar*

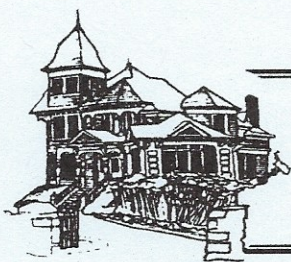
*Markers*

*Walking Tour Brochures*

*Street Sign Toppers*

*Historic Survey*

*Future National Register District nomination(s) or Local Landmark Designation*



South Central *SCAN* Association of Neighbors  
Salem, Oregon

July 13, 2023

Historic Landmarks Commission  
City of Salem  
Civic Center, Room 305  
555 Liberty Street, SE  
Salem, Oregon 97301

ATTN: Lisa Anderson-Ogilvie,  
Deputy Community Development Director & Planning Administrator

The South Central Association of Neighbors (SCAN) Board voted to formally request the following actions at its July 12, 2023, board meeting:

1. the designation of our neighborhood as the next HERITAGE NEIGHBORHOOD;
2. the completion of a *Reconnaissance Level Survey* (RLS) of architectural, historical and cultural resources of our neighborhood; followed by,
3. the completion of an *Intensive Level Survey* (ILS) by a professional historic consultant; and,
4. the identification of additional opportunities for enhancement, public education and awareness of our neighborhood's architectural, historic and cultural resources.

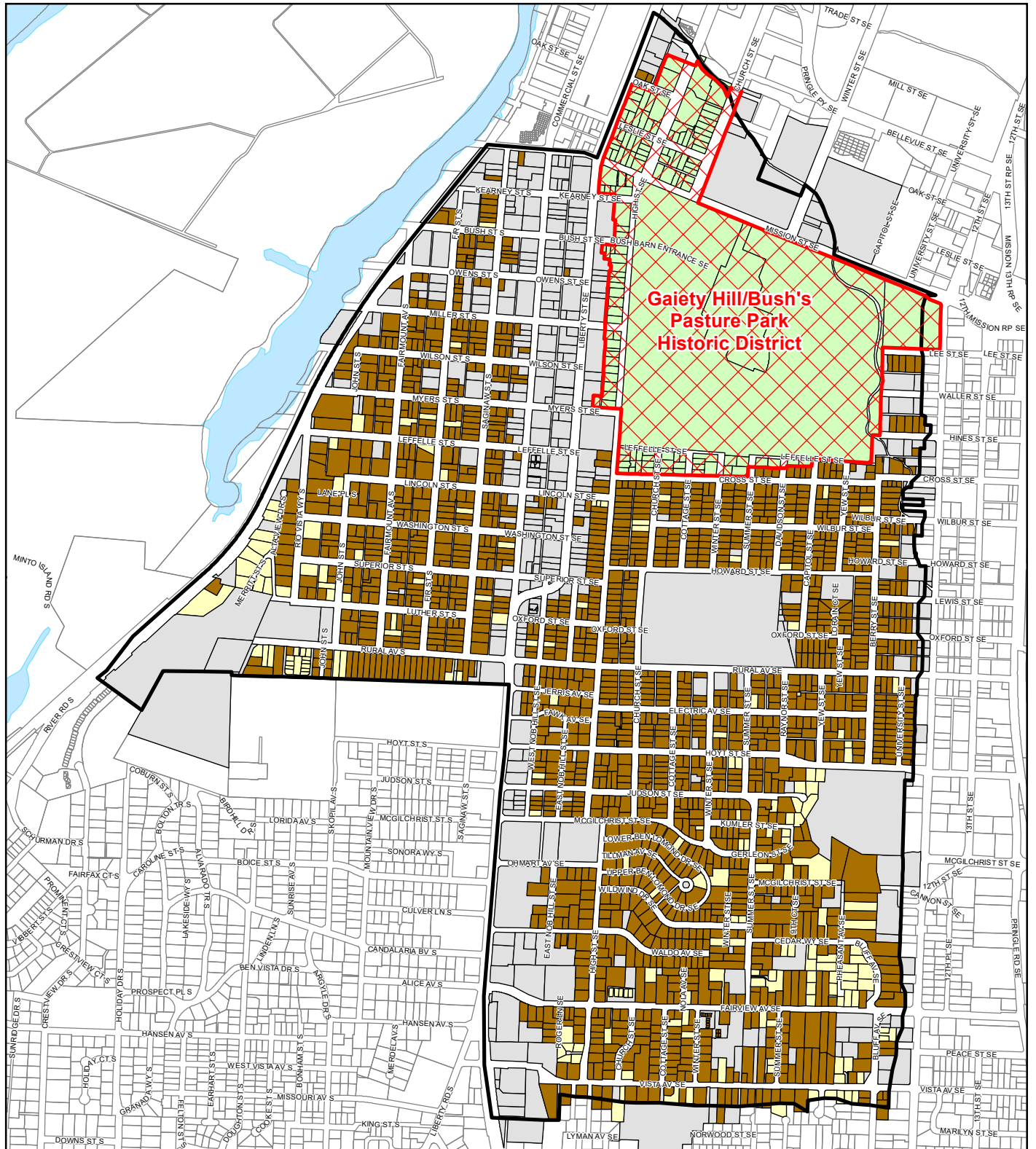
Thank you, in advance, for your consideration.

Victor J. Dodier  
SCAN President

cc: Jon Christenson  
Chair, SCAN Historic Preservation, Parks & Gardens Committee

Kimberli Fitzgerald, Historic Preservation Officer  
City of Salem

# South Central Association of Neighbors (SCAN) Neighborhood Building Age Summary Information★



## Legend

- |   |   |
|---|---|
| <b>SCAN Taxlots Not Within Historic District ★</b>  | <span style="background-color: #90EE90; border: 1px solid black; display: inline-block; width: 15px; height: 10px;"></span> SCAN Taxlots Within Historic District (excluded from analysis totals) |
| <span style="background-color: #8B4513; border: 1px solid black; display: inline-block; width: 15px; height: 10px;"></span> 50 Years Old or Older (1666 taxlots - 73%)      | <span style="border: 2px dashed red; display: inline-block; width: 15px; height: 10px;"></span> Gaiety Hill/Bush's Pasture Park Historic District   |
| <span style="background-color: #FFD700; border: 1px solid black; display: inline-block; width: 15px; height: 10px;"></span> Less Than 50 Years Old (179 taxlots - 8%)       | <span style="border: 2px solid black; display: inline-block; width: 15px; height: 10px;"></span> South Central Association of Neighbors (SCAN) Neighborhood                                       |
| <span style="background-color: #A9A9A9; border: 1px solid black; display: inline-block; width: 15px; height: 10px;"></span> Year Constructed - No Value (444 taxlots - 19%) | <span style="border: 1px solid black; display: inline-block; width: 15px; height: 10px;"></span> Taxlots  |

This product is provided as is, without warranty. In no event is the City of Salem liable for damages from the use of this product. This product is subject to license and copyright limitations and further distribution or resale is prohibited.



★ Note: Building Age Summary Information is based on "Year Constructed" values within the current Assessor taxlot data and those taxlots within the Historic District are excluded. Some multi-part and single-part taxlots extend beyond the SCAN Neighborhood boundary and are included within the analysis totals.

