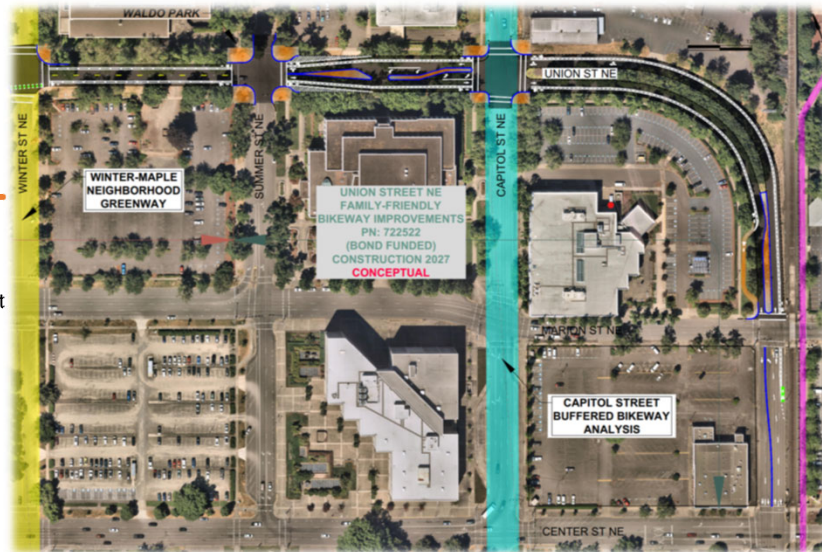


## UNION STREET NE FAMILY FRIENDLY BIKEWAY UPDATE

- 30% design of bikeway continues
- ODOT coordination at Front Street NE is now underway (west end)
- Construction: 2027

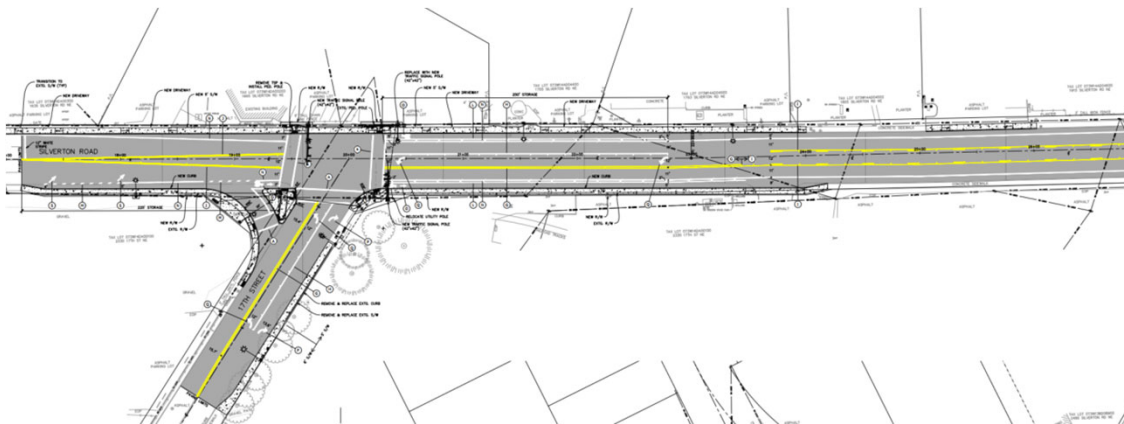


1

1

## SILVERTON ROAD NE UPDATE

- 30% design of road diet and CIPP work, including pavement analysis, by-pass pumping plans, and ROW determination are being developed
- Franchise utility coordination is underway
- Construction: 2025



2

2

## Pedestrian Project Request Outreach

- Web page launched: [www.cityofsalem.net/side-walk-safety](http://www.cityofsalem.net/side-walk-safety)
- Initial Press Jan. 10
- Deadline March 31

Please provide your feedback for any or all of the three project categories by March 31, 2024.



Pedestrian Crossing



Sidewalk Infill and Sidewalk Replacement

### Pedestrian-related Project Categories

1. **Pedestrian Crossings projects** may include new median islands, lighting, rapid flashing beacons, and new curb ramps. Estimated funding available is \$3,540,000.
2. **Sidewalk Infill projects** will construct missing sections of sidewalks to provide pedestrian continuity. Estimated funding available is \$6,000,000.
3. **Sidewalk Replacement projects** will repair sidewalk sections or panels to create accessible pedestrian connections. Estimated funding available is \$7,542,000.

3

## THANK YOU SALEM



### Safety and Livability Bond

Salem is committed to enhancing pedestrian safety and accessibility. Thanks to the voter approved \$300 million Safety and Livability Bond we are seeking your input on new sidewalk replacement, sidewalk infill, and pedestrian crossings throughout the City. Residents can participate by exploring the interactive dashboard. Projects will be evaluated and selected based on approved criteria from the City Council.

**Please submit suggestions by March 31, 2024**



### 17 MILLION DOLLARS TO FUND...

Sidewalk Infill - \$6 million for sidewalk infill

Sidewalk Replacement - \$7.5 million in sidewalk replacements

Pedestrian Crossings - \$3.5 million for new pedestrian crossings

Visit the Safety and Livability Bond Pedestrian Project Request!



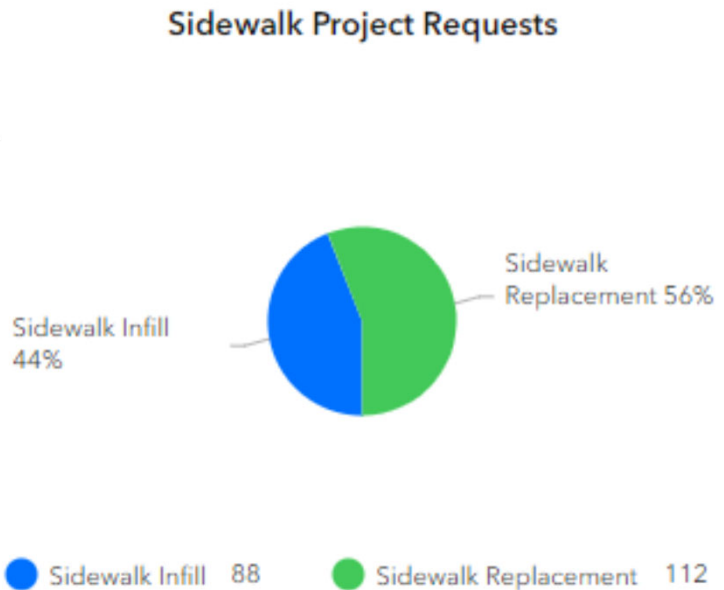
City of Salem  
TO YOUR SERVICE  
Public Works Department

[www.cityofsalem.net/side-walk-safety](http://www.cityofsalem.net/side-walk-safety)

4

## Pedestrian Project Requests Since Jan. 1

- 200 Sidewalk Requests
  - 112 Sidewalk Replacement
  - 88 Sidewalk Infill
- 114 Safer Crossing Requests
- Likely some duplicates



5

## Equity Roundtable Input – Jan. 16

- Identified limitation of translation
  - Website translation service does not include embedded tools, such as surveys and maps
  - Working to address for Spanish language
- Members will help spread message
- Check in early with members in March to see if additional push needed

6

# Questions on Outreach?

7

## MINTO-BROWN PARKING LOTS UPDATE



- Tree Removal by City Urban Forestry staff week of Feb. 12th
  - Non-native, Declining health due to bronze birch borer
  - Replaced 1:1 with native trees
- Bid Opening: February 20<sup>th</sup>
- Tight Budget – Consider supplemental funding (Bond Premium?) or cut project scope
- Construction: Early Summer

8

8

# PATHS & TRAILS



Total Length of Paths  
in the Very Poor to  
Poor Condition:

Approximately  
3.75 miles



At current Bond funding of \$4.1M  
all paths within this condition can  
be improved

9

9

# PATHS & TRAILS

PAVEMENT CONDITION ASSESSMENT

TEXTURE	STRUCTURE	CRACKING WIDTH	CRACKING QUANTITY	PONDING WATER	
Look closely at the surface of the pavement:	What is the condition of the concrete structure?	How wide are the cracks?	How many cracks are present?	How many areas of ponding water do you see?	
Gray color with uniform texture:	Concrete is in great condition:	No cracks present:	No cracks present:	No areas with ponding water:	0-4
Uniform, smooth, some rocks exposed:	Concrete has a few cracks:	Cracks are thinner than the thickness of a coin:	A few cracks or in an isolated area:	One to three areas with ponding water:	5-9
Rough texture, many large rocks exposed:	Concrete has many cracks or is heaving/sinking:	Cracks are wider than the thickness of a coin:	Several cracks throughout or a few isolated areas with many cracks:	Four to six areas with ponding water:	10-14
Rocks breaking loose from pavement:	Cracked, is moving:	Cracks are wider than the thickness of a few coins:	Many cracks throughout:	Too many areas to count with ponding water:	15-19
					20+

Park	Texture	Structure	Crack Width	Crack Quantity	Ponding Water	Total	Assessment
Minto-Brown Island Park	3	3	3	6	6	21	Very Poor
College Heights Park	3	3	3	6	6	21	Very Poor
Bush's Pasture Park	3	3	3	6	6	21	Very Poor
Clark Creek Park	3	3	3	6	6	21	Very Poor
Wallace Marine Park	3	3	3	6	6	21	Very Poor
Riverfront Park	2	3	3	6	6	20	Very Poor
Morningside Park	3	2	3	6	6	20	Very Poor
Hillview Park	3	3	3	6	4	19	Poor
Royal Oaks Park	3	3	3	6	4	19	Poor
Sumpter School Park	3	3	3	6	4	19	Poor
Marion Square Park	3	3	3	6	4	19	Poor
Nelson Park	2	2	3	6	6	19	Poor
Englewood Park	3	3	3	6	4	19	Poor
Highland Park	3	3	3	6	4	19	Poor
McKay School Park	3	3	3	6	4	19	Poor
Stephens-Yoshikai School Park	3	3	3	6	4	19	Poor
Hoover Park	3	2	3	6	4	18	Poor
Edgewater Parkway	2	2	3	6	4	17	Poor
Brush College Park	3	3	3	4	4	17	Poor
Deepwood Park	2	3	3	4	4	16	Poor
Lansing Park	2	2	2	4	6	16	Poor
Grant School Park	2	2	3	4	4	15	Poor
Orchard Heights Park	2	2	3	4	4	15	Poor
Woodmansee Park	2	2	3	4	4	15	Poor
Sunnyslope Park	2	2	3	6	2	15	Poor
River Road Park	1	3	3	4	4	15	Poor
Northgate Park	2	2	3	4	4	15	Poor
Livingston Park	2	2	3	4	4	15	Poor
Pringle Park	3	2	2	4	4	15	Poor
Aldrich Park	2	3	2	4	4	15	Poor

10



## PATHS & TRAILS

- New recommended Criteria with weighted percentage

Criteria	Old	New
Park Classification/Function	10%	10%
Park Utilization	15%	20%
Connection to Existing Transportation Systems	5%	5%
Relationship to Other Projects	5%	5%
Hazard Assessment	40%	35%
Need Based Equity (Existing CIP tool)	25%	25%
<b>Total</b>	<b>100%</b>	<b>100%</b>

11

11

## PATHS & TRAILS

- Detailed Scoring Criteria

PARKS PATHS AND TRAILS									
Objective	Weighted Score	Total Weighted Score	5	4	3	2	1	0	
<b>Park Classification/Function</b>  What is the Park Classification?	2	10.00	Neighborhood Park		Community Park		Urban Park		
<b>Park Utilization</b>  	4	20.00	Top third of data set		Middle third of data set		Lowest third of data set		
<b>Connecting to Existing Transportation Systems</b>  Are the existing paths used as a transportation route to aid commuting?	1	5.00	Yes - provides or improves existing connection					No - does not provide connection	
<b>Relationship to Other Projects/Coordination:</b>  Will this project allow coordination and economy of scale when bundled with concurrent or adjacent	1	5.00	Allows for efficiency and economies of scale when delivered in conjunction with other projects.					Neutral effect on other projects.	
<b>Hazard Assessment</b>  Existing paths are rated for condition considering: cracking, ponding, texture	7	35.00	Condition Assessment: Hazard > 20	Condition Assessment: 20 > Hazard > 18	Condition Assessment: 18 > Hazard > 16	Condition Assessment: 16 > Hazard > 12	Condition Assessment: Hazard </= 12		
<b>Need-Based Equity</b>  Consideration of historical systems and dynamics that have routinely benefited privileged groups and resulted in cumulative disadvantage for other groups.	1	25.00	Salem has developed an Equity Scoring Tool, designed using eight categories, each based on Census Bureau data from the American Community Survey (2016-2020). The categories include: Persons 65 years old or older; Persons between the ages of 15 and 17; Persons identifying as Hispanic and/or non-white; Households with no vehicles; Households with limited English; Persons at or below the poverty level; Persons aged between 18 and 64 with a disability; and Persons 65 years old or older with a disability. Each category is measured as a percentage of the total population in each of Salem's census tracts. Each percentage is then converted to a score between 0 (lowest percentage) and 100 (highest percentage) in 10-point intervals. The Equity Scoring Tool sums the scores across all eight categories for each of Salem's 42 census tracts, giving every census tract a Total Equity Score. Where a project touches two or more census tracts, the project will receive the higher (or highest in the case of three or more census tracts) Total Equity Score.						

12

12

# PATHS & TRAILS

## • Sample Park Score Results

	HOOVER * (#)	MORNINGSIDE * (#)	MINTO BROWN * (#)	RIVERFRONT	BUSH
Park Classification/Function	10	10	2	2	2
Park Utilization	12 (9)	12 (9)	20 (15)	20	20
Connecting to Existing Transportation Systems	0	0	5	5	5
Relationship to Other Projects/Coordination	5	5	5	5	5
Hazard Assessment	28 (32)	35 (40)	35 (40)	35	35
Need-Based Equity	23	15	12.5 (3)	12.5	12.5
Total	78 (79)	77 (79)	79.5 (70)	79.5	79.5
*(Previous score)					13

13

# PATHS & TRAILS

## • Sample Park Score Results

	MCKAY	LIVINGSTON	NELSON	ROYAL OAKS	BILL RIEGL
Park Classification/Function	6	10	10	10	10
Park Utilization	20	20	12	20	20
Connecting to Existing Transportation Systems	0	0	5	5	0
Relationship to Other Projects/Coordination	5	5	0	0	0
Hazard Assessment	28	14	28	28	0
Need-Based Equity	25	13	8	20	10
Total	84	62	63	83	40
					14

14

# PATHS & TRAILS

---

- Process to Select Locations
- Share locations City has documented for path and trail replacement
- **Evaluate** locations against criteria
- Identify **paths** to address **top ranking locations**
- Develop cost **estimates**
- **Bond Committee** develops **preliminary recommendations**
  - Consider cost of projects, efficiency of delivery
- Seek **public input** on preliminary recommendations **from Bond Committee**
- Council Approval of Projects

15