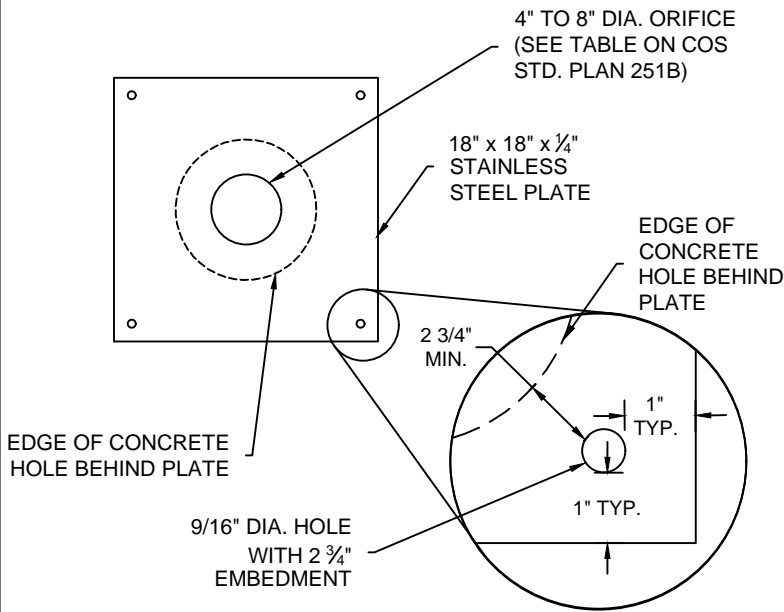


FOR REVIEW

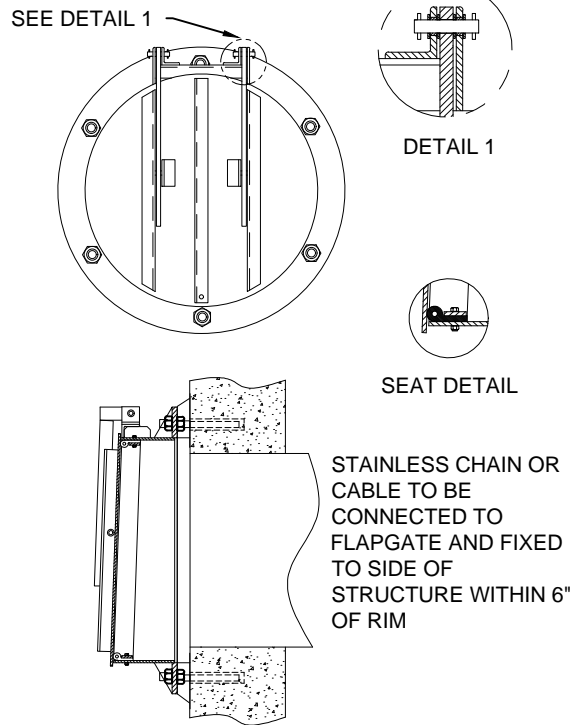
ORIFICE PLATE NTS:



NOTES:

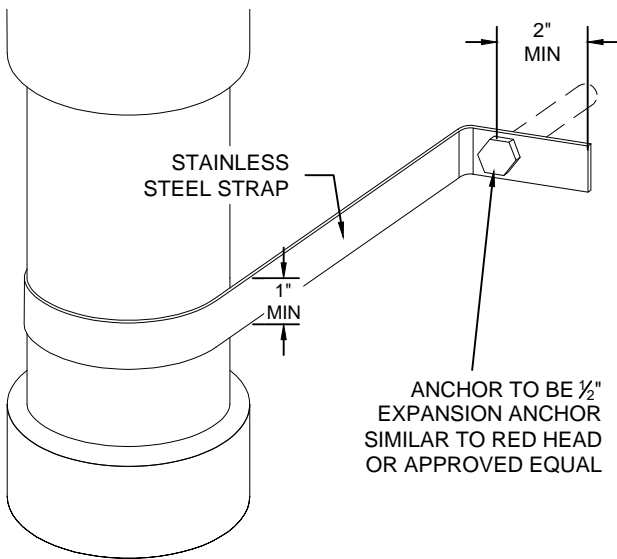
1. ORIFICE OPENING IS TO BE CUT ROUND AND SMOOTH.
2. NEOPRENE GASKET SHALL BE INSTALLED BETWEEN THE ORIFICE PLATE AND CONCRETE BAFFLE TO PROVIDE A WATERTIGHT SEAL.
3. ATTACH ORIFICE PLATE TO BAFFLE WALL USING 4 1/2" DIA. STAINLESS STEEL WEDGE ANCHORS (SIMPSON STRONG BOLT 2 OR APPROVED EQUAL).

MAINTENANCE BYPASS DEVICE NTS:



8" STAINLESS FLAPGATE:
MANUFACTURED BY WATERMAN OR APPROVED EQUAL

STAINLESS STRAP NTS:



ORIFICE CAP NTS:

CAP TO BE SCHEDULE 40 AND GLUED IN PLACE OR GASKETED CAP

ORIFICE HOLE DRILLED IN CAP TO BE COMMON DRILL BIT MEASUREMENT PER BELOW TABLE.

ORIFICE TABLE MEASUREMENT	
CALCULATED SIZE	INCREMENT
1/4" - 1"	1/8"
1" - 3"	1/4"
> 3"	1/2"

GENERAL NOTES

1. REFERENCE CONTROL STRUCTURE STANDARD PLAN FOR NUMBER OF STRAPS TO BE USED.

CHANGES	DESCRIPTION	DATE	BY
	ADDED ORIFICE PLATE DETAIL	3/2024	

**CITY OF SALEM
DEPARTMENT OF PUBLIC WORKS**

**STANDARD PLAN
FLOW CONTROL COMPONENTS**

APPROVED	CITY ENGINEER	DATE

DRAWN BY	MT	3/2024
CHECKED BY	BT	3/2024

NO.251E