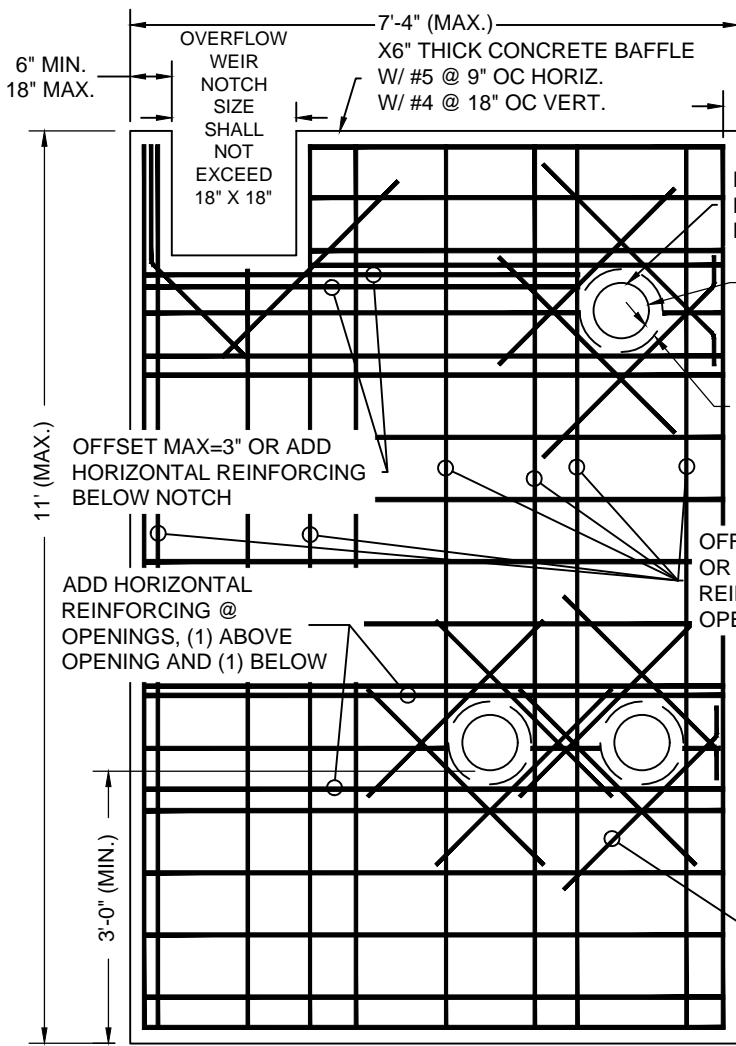


BAFFLE WALL PLAN VIEW

NTS



BAFFLE WALL PROFILE

NTS

CONCRETE:

- A. ALL CONCRETE WORK SHALL CONFORM TO OSSC CHAPTER 19, "CONCRETE," ACI 318, "BUILDING CODE REQUIREMENTS FOR STRUCTURAL CONCRETE," ACI 301, "SPECIFICATIONS FOR STRUCTURAL CONCRETE," ACI 117, "SPECIFICATIONS FOR TOLERANCES FOR CONCRETE CONSTRUCTION AND MATERIALS."
- B. CONCRETE MIX DESIGNS SHALL BE 3,300PSI MIN. WITH W/C RATIO 0.46, MAX AGG 3/4".
- C. NON-SHRINK GROUT DESIGN SHALL BE 6,000PSI MIN WITH W/C RATION 0.46, MAX AGG 3/8"
- D. PORTLAND CEMENT CONTENT MAY BE REPLACED WITH UP TO 25% FLY ASH CONFORMING TO ASTM C618 (INCLUDING TABLE 2A) TYPE F OR TYPE C, PROVIDED THAT MIX STRENGTH IS SUBSTANTIATED BY TEST DATA.
- E. WATER REDUCING ADMIXTURES CONFORMING TO ASTM C494 MAY BE USED IN STRICT ACCORDANCE WITH THE MANUFACTURER'S RECOMMENDATIONS AND SHALL BE INCORPORATED IN THE CONCRETE MIX DESIGN SUBMITTAL.
- F. SLUMP REQUIRED FOR PROPER PLACEMENT SHALL BE DETERMINED BY THE CONTRACTOR AND SUPPLIER BASE UPON DELIVERY TIME AND METHOD OF PLACEMENT AND INCLUDED IN THE MIX DESIGN SUBMITTAL INCLUDING INFLUENCE OF ADDITIVES.

REINFORCING STEEL:

- A. ALL REINFORCING STEEL SHALL BE BILLET STEEL DEFORMED BARS CONFORMING TO ASTM A615, GRADE 60, EXCEPT USE ASTM A706, GRADE 60 BARS WHERE WELDING IS REQUIRED. (NO. 3 BARS MAY BE GRADE 40). SUBMIT MILL CERTIFICATES FOR ALL BARS REQUIRING WELDING.
 - B. FABRICATION AND PLACEMENT OF REINFORCING STEEL SHALL BE IN ACCORDANCE WITH CRSI MSP-1-16 "MANUAL OF STANDARD PRACTICE" AND CHAPTER 25 OF ACI 318 "SPECIFICATIONS FOR STRUCTURAL CONCRETE FOR BUILDINGS".
- #4 x36" @ 45°, TYP.
EA. SIDE OF OPENING.
BEND ENDS AS REQ'D

FOR REVIEW

GENERAL NOTES

1. REFERENCE STANDARD PLAN 251B FOR BAFFLE WALL LOCATION

CHANGES	ADJUSTED WEIR LOCATION (PLAN VIEW)	3/2024		

**CITY OF SALEM
DEPARTMENT OF PUBLIC WORKS**

**STANDARD PLAN
FLOW CONTROL BAFFLE WALL**

APPROVED		DATE
	CITY ENGINEER	

DRAWN BY	MT	3/2024
CHECKED BY	BT	3/2024

NO.251F