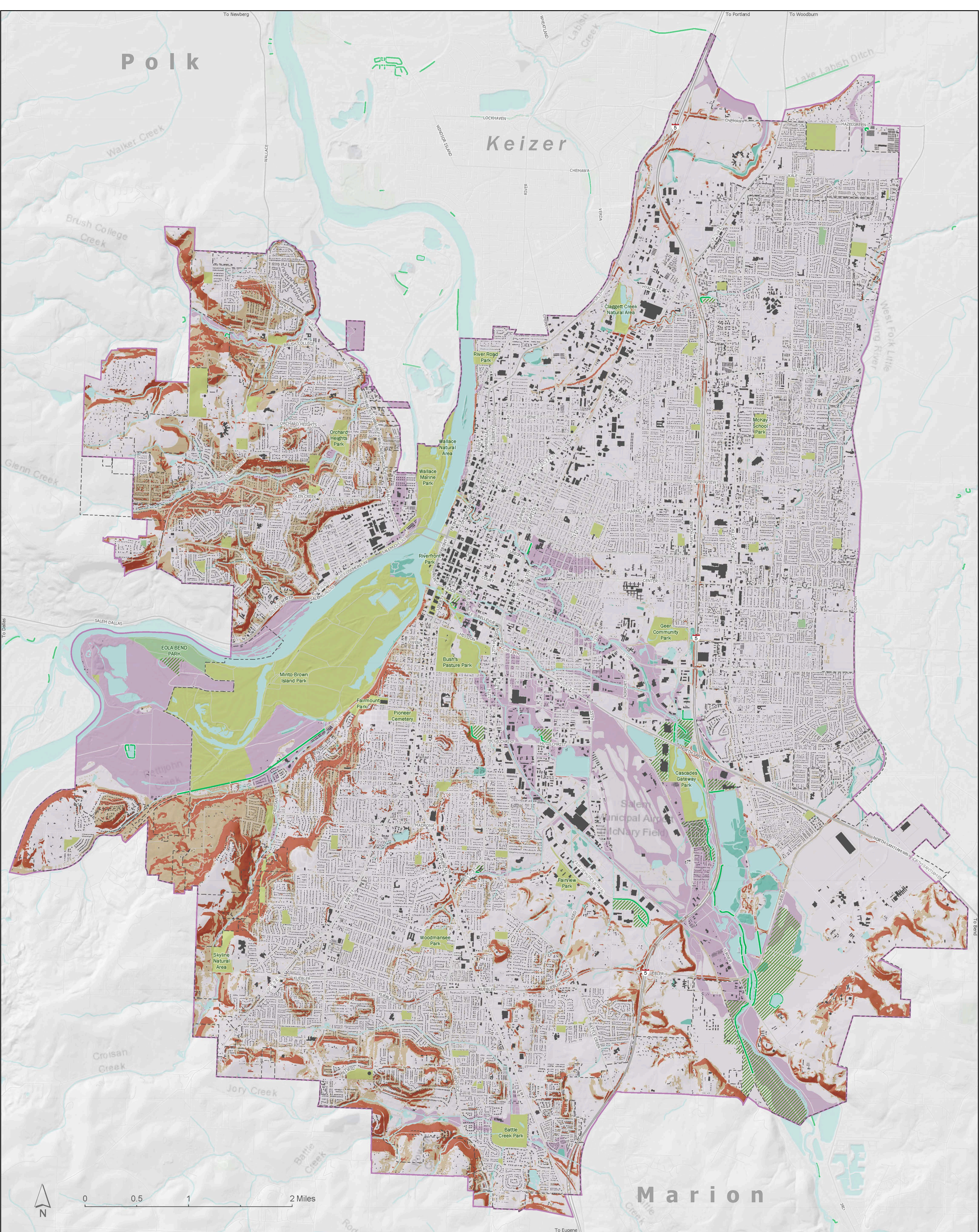


OUR SALEM

## Access to Transit





## Environmental Conditions

- |  |                |  |                              |  |                        |
|--|----------------|--|------------------------------|--|------------------------|
|  | Creeks         |  | City Parks                   |  | City Limits            |
|  | Levee          |  | Other Parks (within UGB)     |  | Salem's Portion of UGB |
|  | Water Body     |  | Steep Slopes (25% and above) |  | Building               |
|  | Wetland        |  | Protected Lands*             |  |                        |
|  | 100 Year Flood |  | Landslide Hazards            |  |                        |

\*The protected lands feature class is an inventory of protected lands polygons representing parcels located behind levee line features in Oregon. It is a compilation of levee datasets from the following sources: The Oregon Department of Geology and Mineral Industries (2017) and The Oregon Coastal Monitoring Program (2011).