

Salem Area Race and Ethnicity

% Asian

0 - 2%

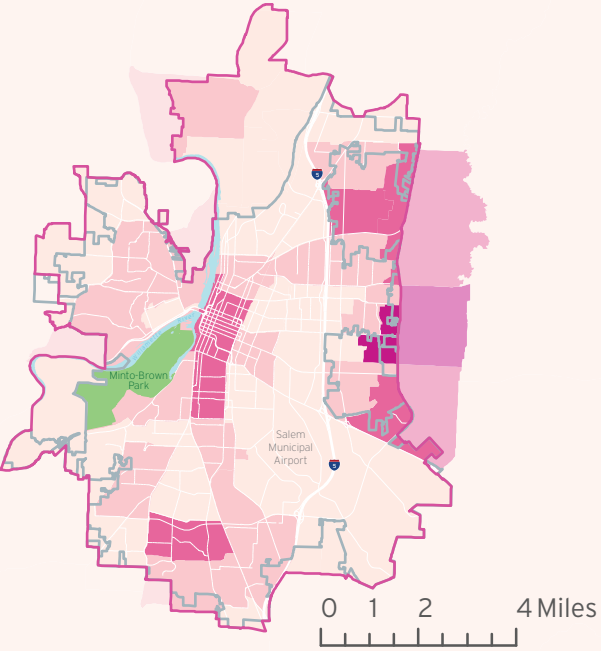
2 - 4%

4 - 6%

6 - 8%

UGB

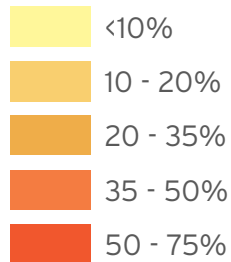
City Limits



Data from US Census Bureau, ACS 5-Year Estimate 2014-2018

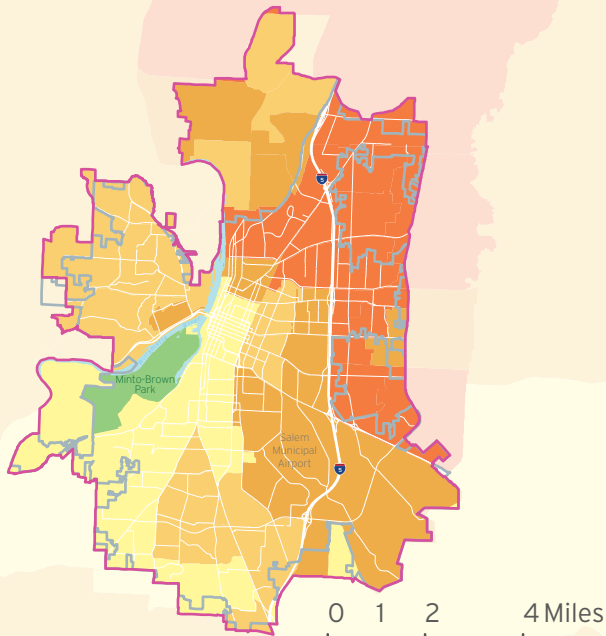
Salem Area Race and Ethnicity

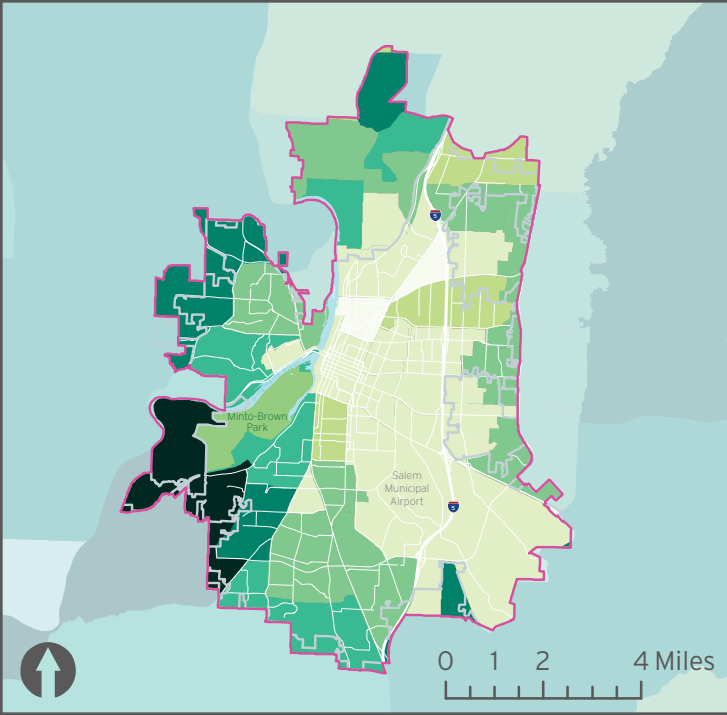
% Hispanic or Latino



 UGB

 City Limits

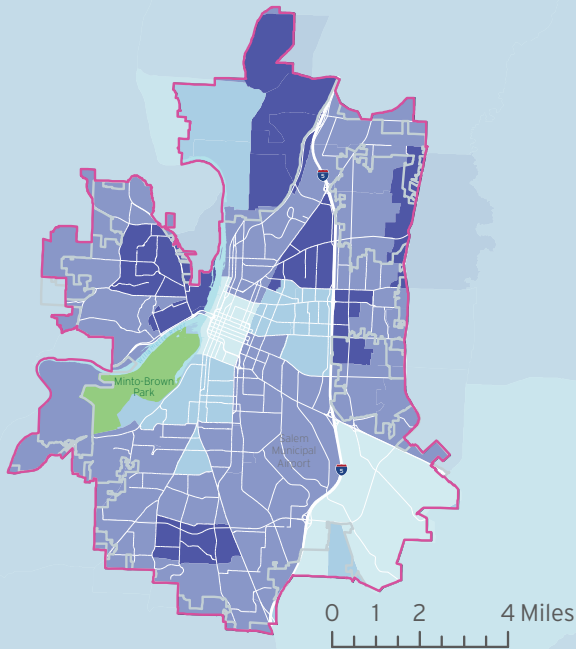




Median Household Income

- Less than \$35,000
- \$35,000 - Less than 45,000
- \$45,000 - Less than \$55,000
- \$55,000 - Less than \$65,000
- \$65,000 - Less than \$75,000
- \$75,000 - Less than \$85,000
- \$85,000 - Less than \$95,000
- Greater than \$95,000

- UGB
- City Limits



% School Age (5-17)



<10%



10-15%



15-20%



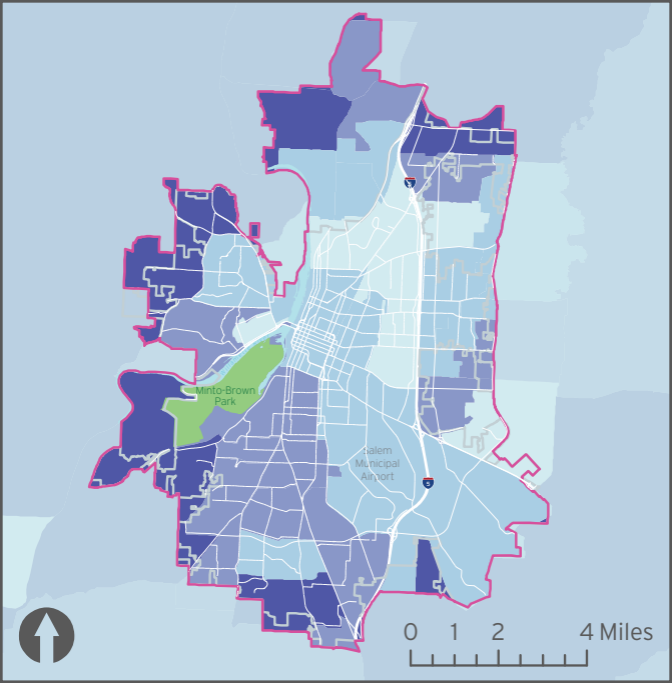
20-25%



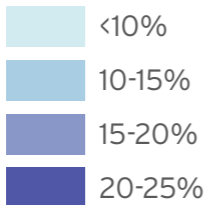
UGB



City Limits



% Senior (65+)



Salem Area Race and Ethnicity

% White

