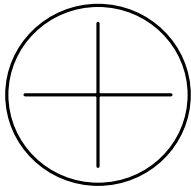
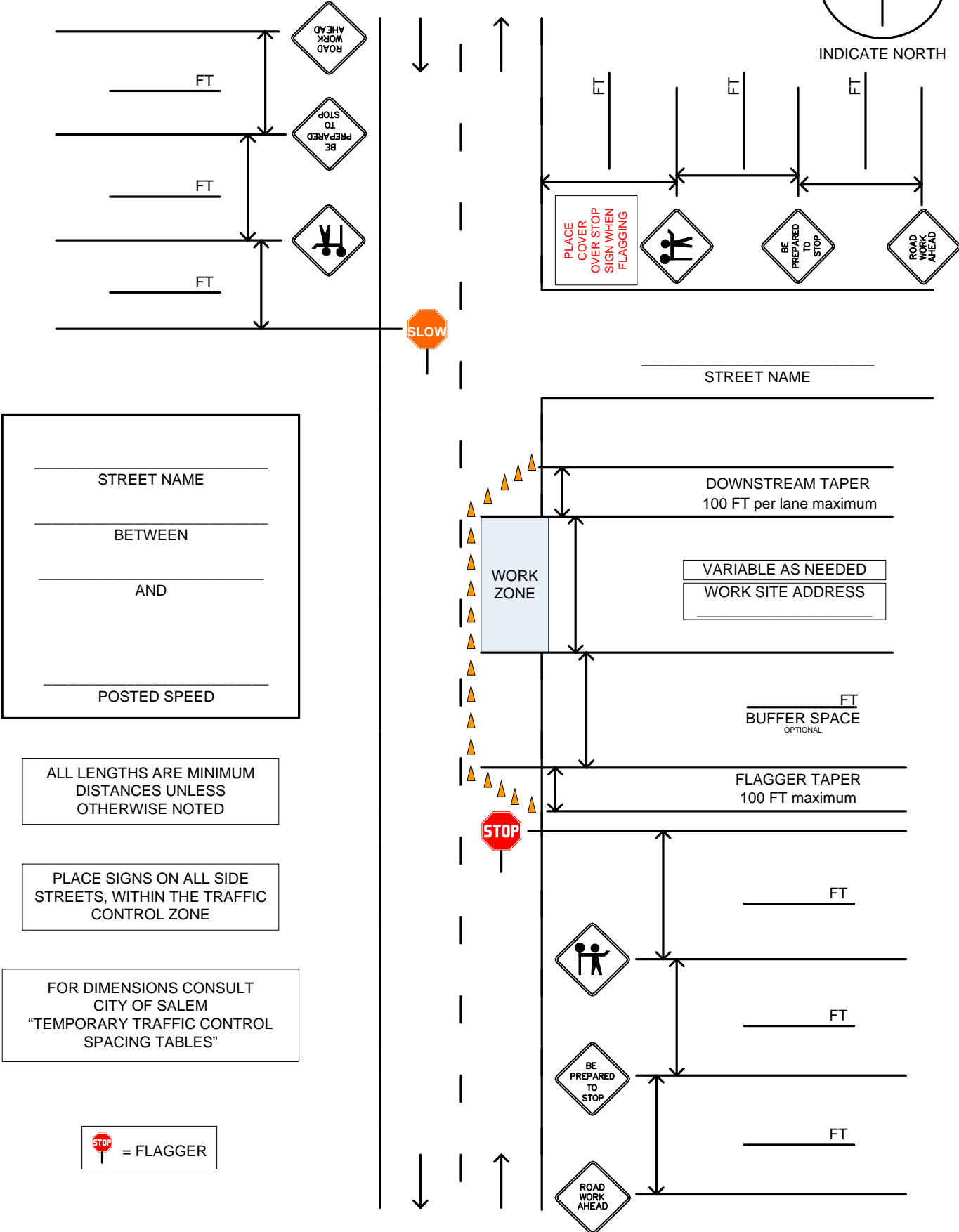


DRAWING NOT TO SCALE

THREE-WAY TRAFFIC WITH TWO FLAGGERS AT INTERSECTION




INDICATE NORTH



ALL LENGTHS ARE MINIMUM DISTANCES UNLESS OTHERWISE NOTED

PLACE SIGNS ON ALL SIDE STREETS, WITHIN THE TRAFFIC CONTROL ZONE

FOR DIMENSIONS CONSULT CITY OF SALEM "TEMPORARY TRAFFIC CONTROL SPACING TABLES"

 = FLAGGER

Sight distance shall be maintained at all public and private intersections and driveways. If sight distance is not achievable, prior approval by the City Traffic Engineer is required to either restrict turn movements or use flaggers and shall include coordination with the affected property/business owner(s).