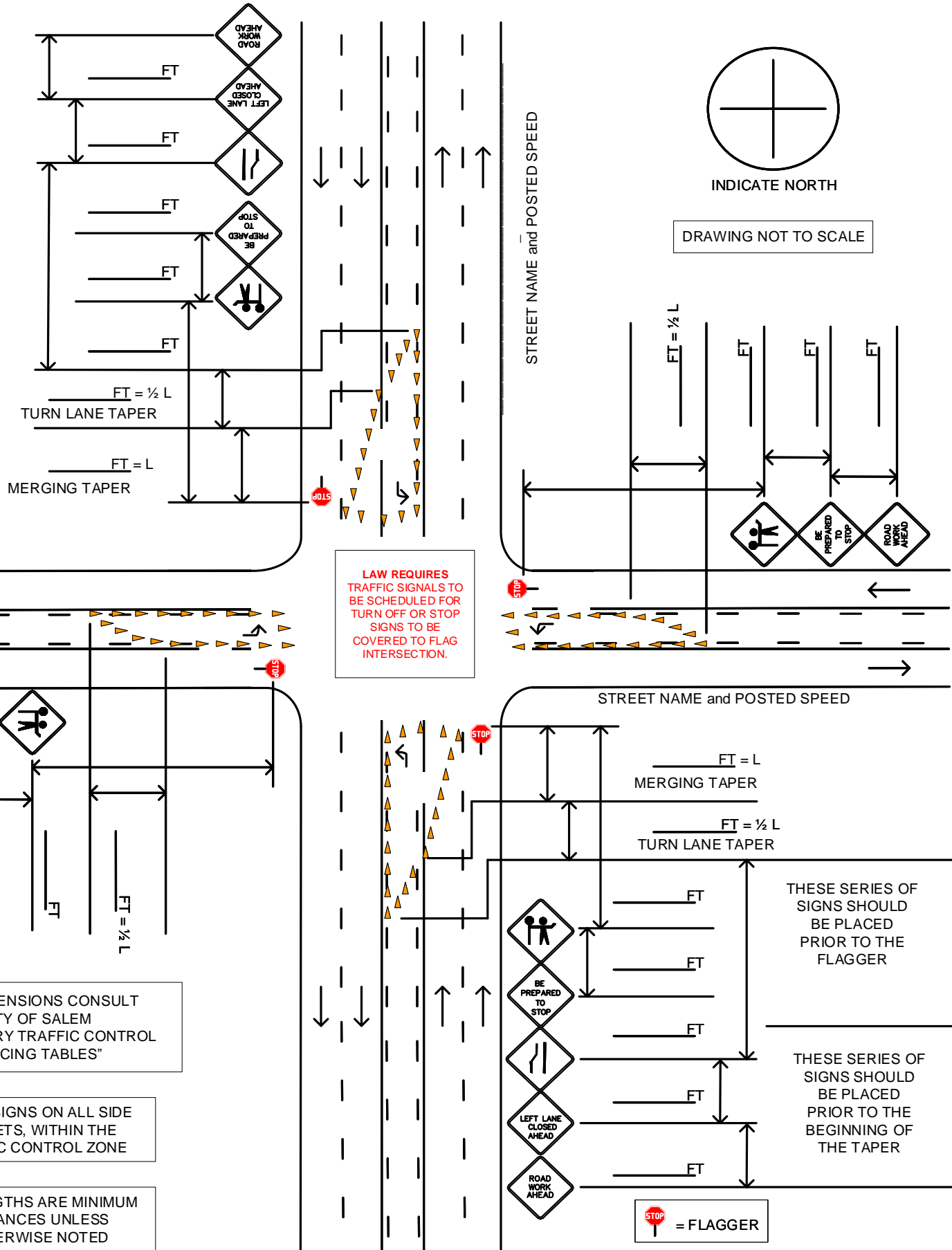


FLAGGING AT INTERSECTION 5-3 LANE STREET



FOR DIMENSIONS CONSULT
CITY OF SALEM
"TEMPORARY TRAFFIC CONTROL
SPACING TABLES"

PLACE SIGNS ON ALL SIDE
STREETS, WITHIN THE
TRAFFIC CONTROL ZONE

ALL LENGTHS ARE MINIMUM
DISTANCES UNLESS
OTHERWISE NOTED

Sight distance shall be maintained at all public and private intersections and driveways. If sight distance is not achievable, prior approval by the City Traffic Engineer is required to either restrict turn movements or use flaggers and shall include coordination with the affected property/business owner(s).