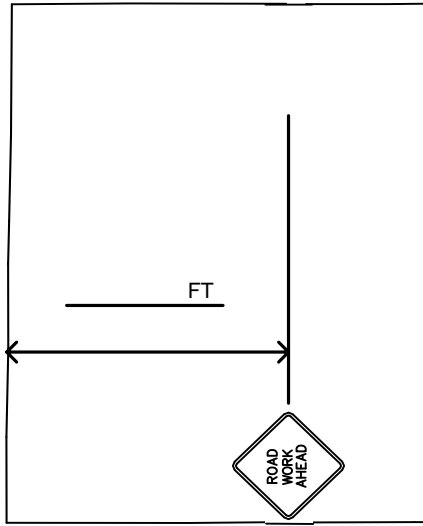
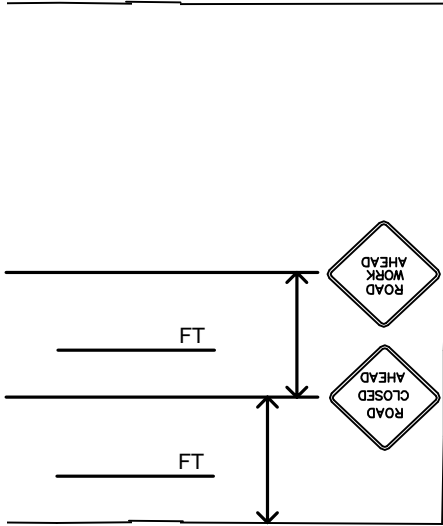
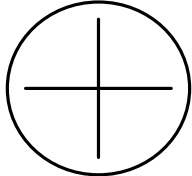


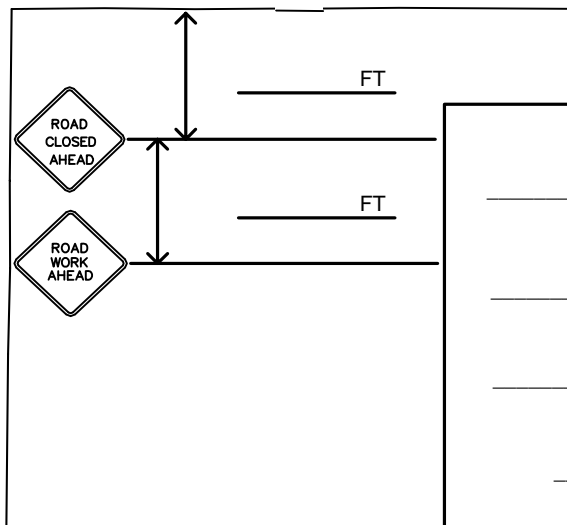
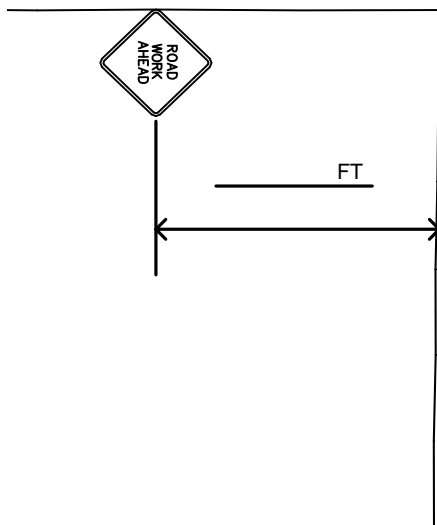
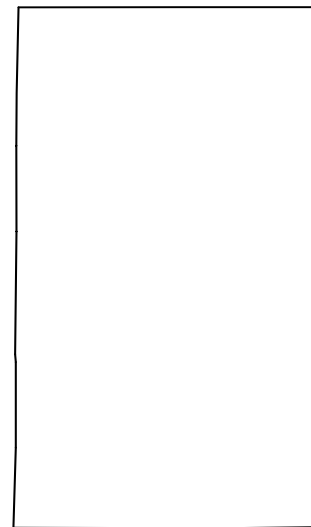
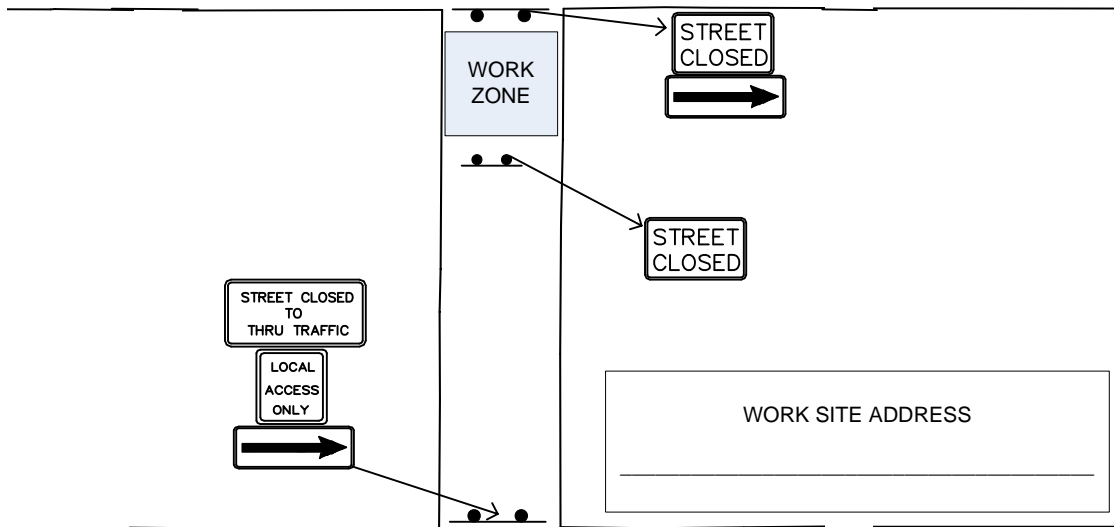
STREET CLOSURE, LOCAL STREET ONE-WAY GRID




 INDICATE NORTH

 DRAWING NOT TO SCALE

 ALL LENGTHS ARE MINIMUM DISTANCES UNLESS OTHERWISE NOTED
 FOR DIMENSIONS CONSULT CITY OF SALEM "TEMPORARY TRAFFIC CONTROL SPACING TABLES"



 STREET NAME

 BETWEEN

 AND

 POSTED SPEED

Sight distance shall be maintained at all public and private intersections and driveways. If sight distance is not achievable, prior approval by the City Traffic Engineer is required to either restrict turn movements or use flaggers and shall include coordination with the affected property/business owner(s).