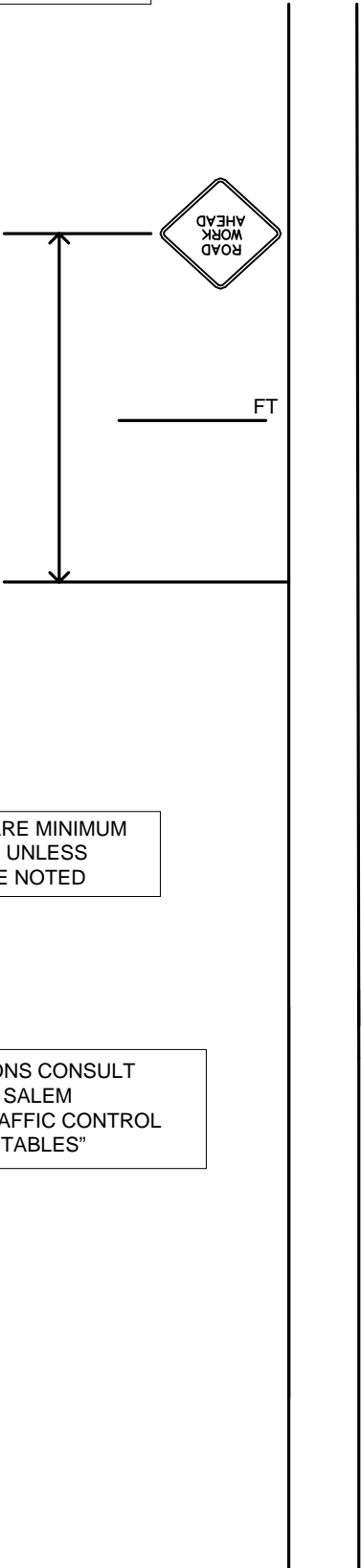


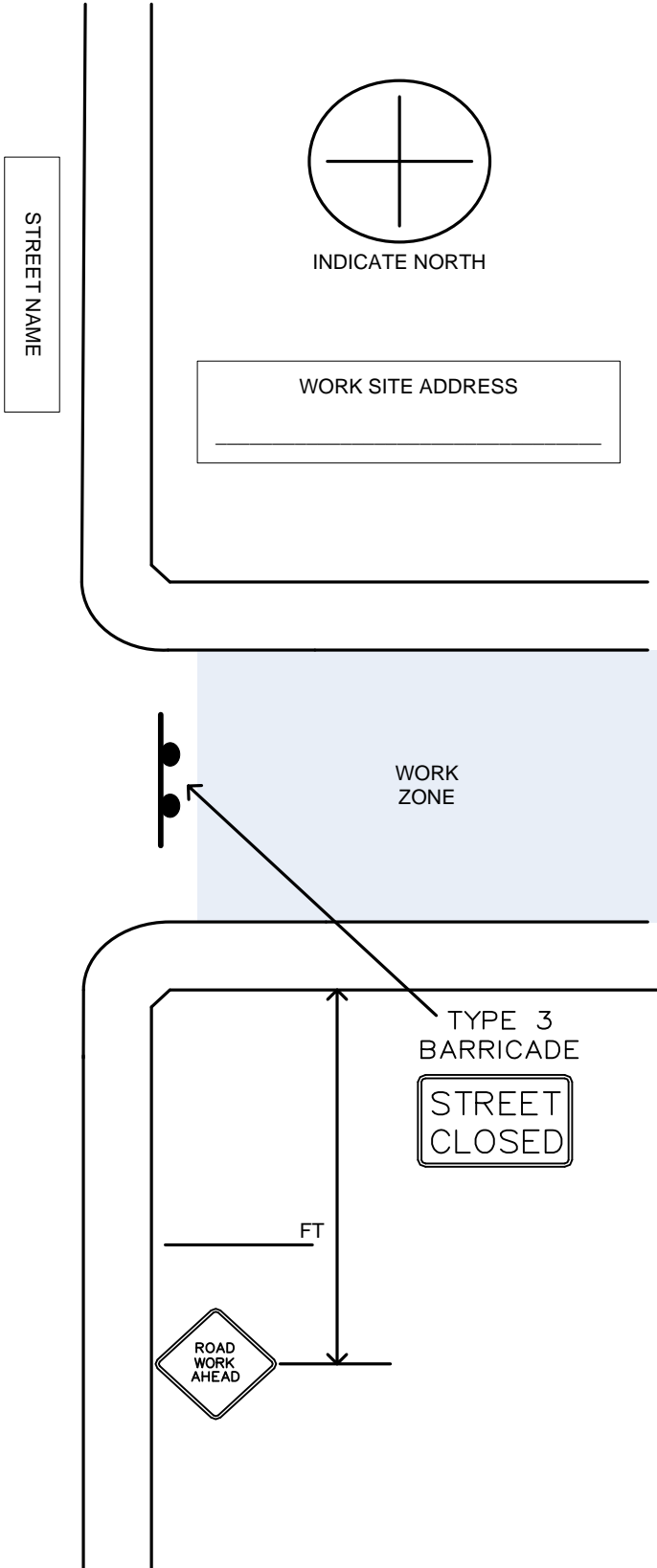
CLOSURE FOR CONSTRUCTION OF NEW STREET CONNECTION, MID BLOCK

DRAWING NOT TO SCALE



ALL LENGTHS ARE MINIMUM  
DISTANCES UNLESS  
OTHERWISE NOTED

FOR DIMENSIONS CONSULT  
CITY OF SALEM  
"TEMPORARY TRAFFIC CONTROL  
SPACING TABLES"



Sight distance shall be maintained at all public and private intersections and driveways. If sight distance is not achievable, prior approval by the City Traffic Engineer is required to either restrict turn movements or use flaggers and shall include coordination with the affected property/business owner(s).