

**CITY OF SALEM  
DEPARTMENT OF PUBLIC WORKS  
STANDARD DRAWINGS  
TABLE OF CONTENTS**

001-099	Miscellaneous
100-199	Sewers and Drains
200-299	Stormwater
300-399	Streets
400-499	Water
500-599	Structures
600-699	Earthwork
700-799	Street Lighting and Traffic Signals
800-899	Landscape and Irrigation
900-999	Erosion Control

<b>Plan No.</b>	<b>Title</b>	<b>Date</b>
<b>Miscellaneous</b>		
003	Legend	09-15-1999
004	Project Notification Sign	01-07-2000
005	Elevations and Datums	12-15-1999
006	Pipe Encasement	09-15-1999
007	R.R. Track Crossing	09-15-1999
008	Monument Box Installation Detail	09-15-1999
009	Monument Box Casting Detail	09-15-1999

## ITEM

SANITARY SEWER  
STORM DRAIN  
WATER  
N.W. NATURAL  
TELEPHONE  
ELECTRICITY  
TELEVISION

CURB, DRIVEWAY, P.C.C. SIDEWALK

FENCE

BARRICADE

FIRE HYDRANT & VALVE

STREET OR ALLEY RIGHT OF WAY  
PLATTED LOT LINE  
PLATTED LOT LINE (ABANDONED)  
OWNERSHIP LINE  
EASEMENT OR TEMPORARY RIGHT OF WAY  
IMPROVEMENT DISTRICT BOUNDARY  
PROJECT CENTERLINE AND STATIONING  
CITY LIMITS LINE

MAILBOX  
POWER POLE & ANCHOR OR LIGHT  
WATER VALVE, WATER METER

RAILROAD

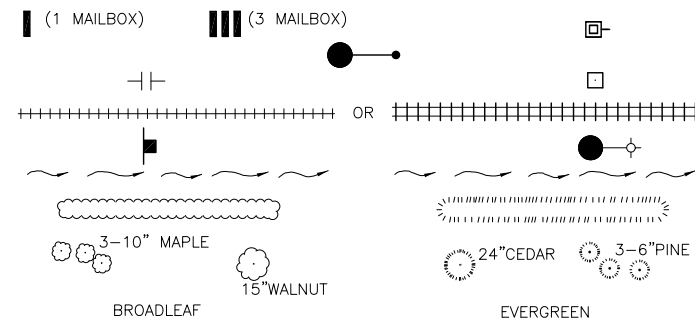
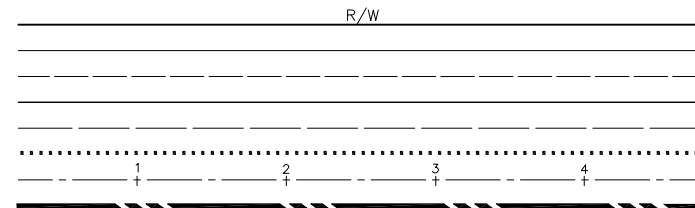
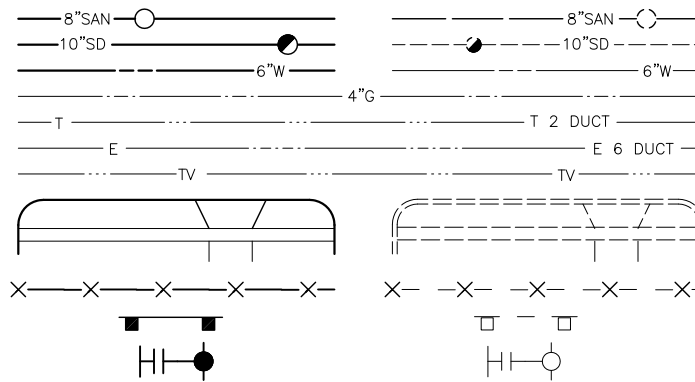
SIGN POST, LIGHT STANDARD  
FLOW LINE OR SHORELINE

HEDGE OR BRUSH

TREES

TO BE BUILT

EXISTING



## ITEM

CONSTRUCT TYPE A B C & D CURB  
OBJECT TO BE RELOCATED

OBJECT TO BE REMOVED

TO BE ABANDONED

REMOVE & REPLACE

TREES OR SHRUBS TO BE TRIMMED

TUNNELING LOCATION  
BORING LOCATION (R.R., CREEK, HWY, ETC.)  
MONUMENT OR OTHER HORIZONTAL CONTROL  
BENCH MARK (VERTICAL CONTROL)  
BEGINNING OF CURB RADIUS.  
END OF CURB RADIUS  
RADIUS  
LENGTH OF CURVE ALONG CIRCULAR ARC.  
POINT OF CURVATURE  
POINT OF INTERSECTION OF BACK TANGENT AND  
FORWARD TANGENT

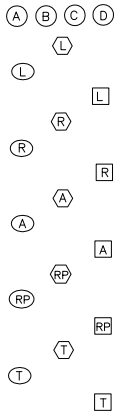
POINT OF TANGENCY  
POINT OF REVERSE CURVE  
VERTICAL CURVE  
POINT OF INTERSECTION OF BACK GRADE AND  
FORWARD GRADE

INSTALL 3" DIAMETER DRAIN IN CURB, EXACT LOCATION  
TO BE DETERMINED IN FIELD.

HOUSE NUMBER

NOTE: NUMBERS TO BE POSITIONED PARALLEL  
TO THE STREET THE HOUSE IS NUMBERED TO

## SYMBOL

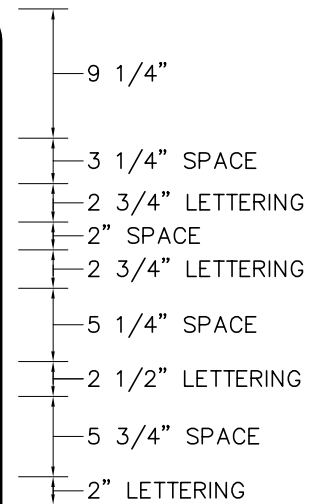


Approved Karl O. Schuster 9-15-99  
City Engineer Date

No.	Description	Date	By	Appr
3	CHANGE TITLE BLOCK	9/99		
2	CONVERT TO CAD DWG.	1/97		
1	EXISTING CURB	1/97		
REVISION				

CITY OF SALEM DEPARTMENT OF PUBLIC WORKS	
STANDARD PLAN LEGEND	
DRAWN BY GS	NO.003
CHECKED BY D.W.	

- SYMBOLS SHALL NORMALLY BE DRAWN TO SCALE BUT NOT SMALLER THAN SIZES SHOWN.
- MANHOLE MAY BE ASSUMED 4FT. IN DIAMETER POWER POLES 18" IN DIAMETER AND CATCH BASINS 24"X36" IF ACTUAL DIMENSIONS ARE NOT SHOWN.
- LEGEND SYMBOLS AND NOTES ON PROJECT PLANS WILL TAKE PRECEDENCE OVER THIS STANDARD LEGEND IN CASE OF CONFLICT.



LINE 1	LINE 2	LINE 3
SEWER SYSTEM	PIPELINE EXTENSION PIPELINE REPLACEMENT PIPELINE REHABILITATION PUMP STATION	<i>Your sewer rates at work</i> <i>Your sewer rates at work to reduce overflows to Salem creeks and streams</i> <i>Your SDC's at work</i>
STORM SYSTEM	PIPELINE EXTENSION PIPELINE REPLACEMENT	<i>Your sewer rates at work</i>
STREET SYSTEM	IMPROVEMENT WIDENING RESURFACING RECONSTRUCTION	<i>Your gas taxes at work</i> <i>Funds approved by voters in XXX.XXXX</i> <i>Your SDC's at work</i>
WATER SYSTEM	PIPELINE EXTENSION PIPELINE REPLACEMENT PUMP STATION RESERVOIR	<i>Your water rates at work</i> <i>Your SDC's at work</i>
OTHER	OTHER	<i>Other</i>

NOTES:

1. SIGN TO BE 48" x 48", 40 GAUGE, ALUMINUM WITH 2.25" ROUNDED CORNERS. LEGEND TO BE BLUE ON WHITE EXCEPT LINES 1 & 3 WHICH ARE BLACK ON WHITE. USE TYPE C FONT.
2. MOUNT SIGN ON 4" x 6" WOOD POST DRILLED WITH 2-2" HOLES AT GROUND LEVEL AT 90° ANGLES FOR BREAKAWAY PROTECTION (MINIMUM 14' LONG), 7' TO BOTTOM OF SIGN.
3. CONTRACTOR TO PICK UP SIGN AT CITY SHOPS, MOUNT SIGN, MAINTAIN SIGN DURING CONSTRUCTION, REMOVE SIGN AND POST AFTER CONSTRUCTION, RETURN SIGN TO CITY SHOPS.
4. ENGINEER TO SPECIFY CONTENTS OF LINES 1, 2, & 3.

Approved

*Karl O. Gruen*  
City Engineer

1-7-00  
Date

CITY OF SALEM  
DEPARTMENT OF PUBLIC WORKS

STANDARD PLAN

## PROJECT NOTIFICATION SIGN

No.	Description	Date	By	Appr
-----	-------------	------	----	------

## REVISION

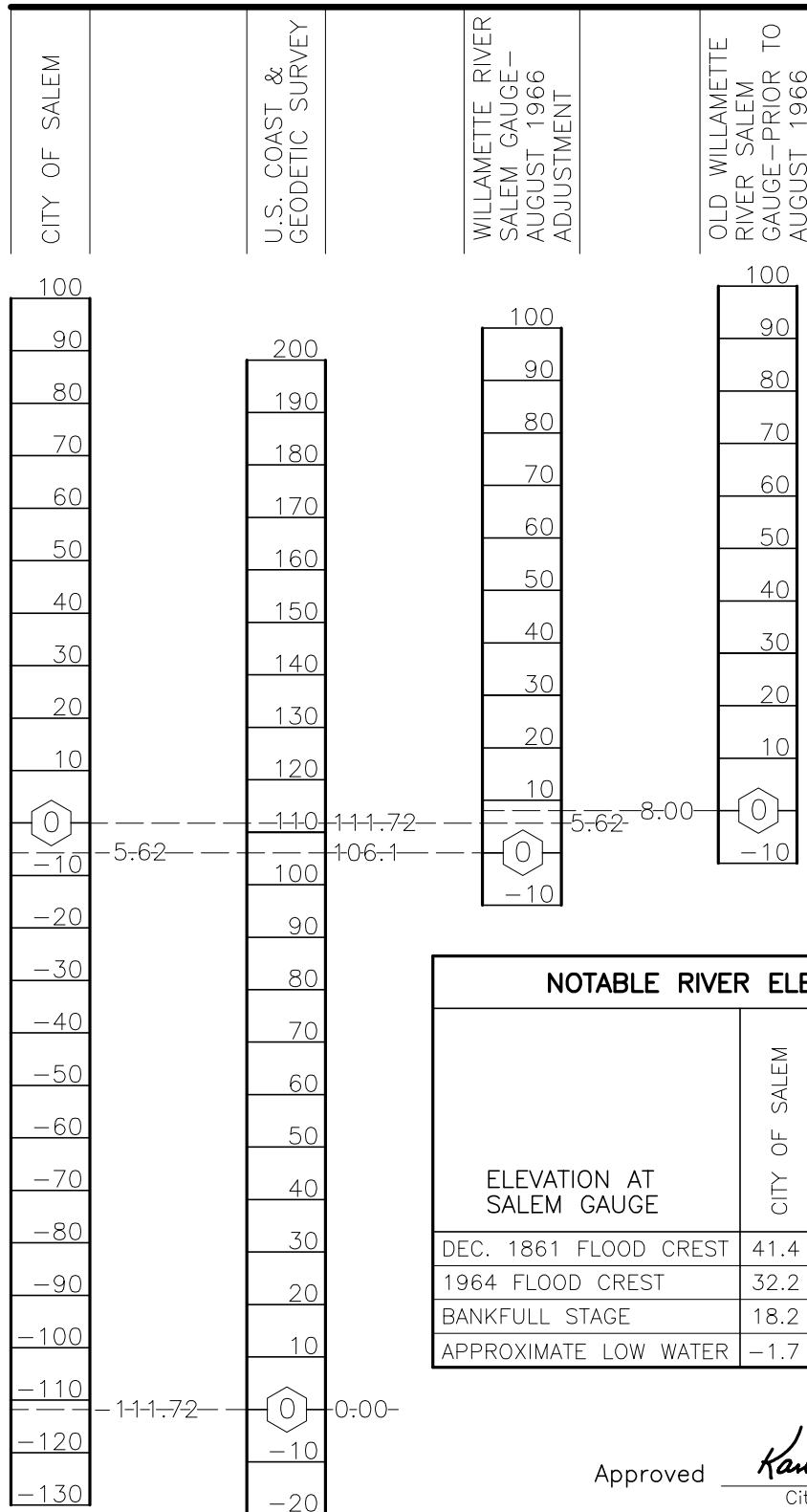
DRAWN BY I.D.F.

CHECKED BY R.W.L.

NO.004

# DATUMS

ELEVATIONS IN FEET



## NOTABLE RIVER ELEVATIONS

ELEVATION AT SALEM GAUGE	CITY OF SALEM	U.S. COAST & GEODETIC SURVEY	WILLAMETTE RIVER SALEM GAUGE - AUGUST 1966 ADJUSTMENT
DEC. 1861 FLOOD CREST	41.4	153.1	47.0
1964 FLOOD CREST	32.2	143.9	37.8
BANKFULL STAGE	18.2	129.9	23.8
APPROXIMATE LOW WATER	-1.7	110.0	3.9

Approved

*Karl O. Gutzler*  
City Engineer

12-15-99

Date

### NOTE:

WILLOW LAKE TREATMENT PLANT AND INTERCEPTOR SEWER PLANS ARE BASED ON ARBITRARY DATUM OF CITY OF SALEM DATUM PLUS 100.00 FEET.

No.	Description	Date	By	Appr
	CHANGE FORMAT-MINOR REVISION	12-99	I.D.F.	K.D.G.
	CONVERT TO CAD DWG.			
REVISION				

CITY OF SALEM  
DEPARTMENT OF PUBLIC WORKS

STANDARD PLAN  
ELEVATIONS AND DATUMS

DRAWN BY GS

CHECKED BY D.W.

NO.005



A detailed cross-section diagram of a concrete slab and tie system. The diagram shows a concrete slab with a wavy line representing a joint or boundary. Above the slab, there are two sets of rails: a 'RUNNING RAIL' and a 'GUARD RAIL'. The rails are connected by a '7"x 9" R.R. TIE 8' MIN. LENGTH'. The tie is shown as a horizontal bar with a cross-section of 7 inches by 9 inches. The concrete slab is labeled '12" CONCRETE SLAB 3000 P.S.I. 2" TO 4" SLUMP'. The slab is shown with a cross-section of 12 inches. The tie is shown with a cross-section of 7 inches by 9 inches. The diagram also shows 'EXISTING PAVEMENT' on the right side. Dimensions for the tie are given as 12" and 6".

2" OF 1/2" CRUSHED  
ROCK & CEMENT GROUT

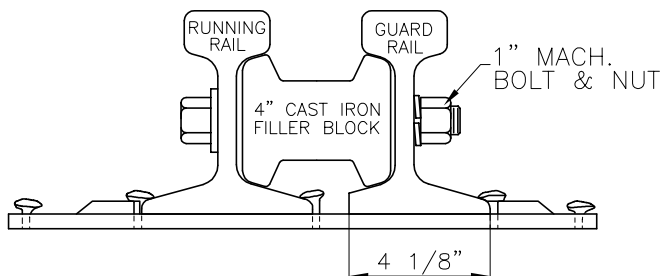
12" CONCRETE SLAB 3000 P.S.I. 2" TO 4" SLUMP

# 8x18"

DOWEL IF NOT POURED  
CONTINUOUSLY.

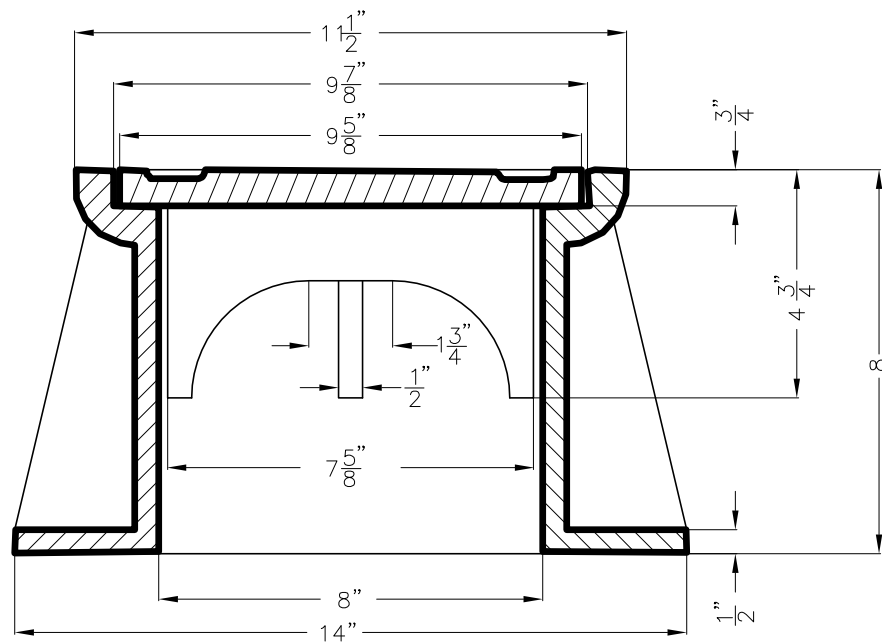
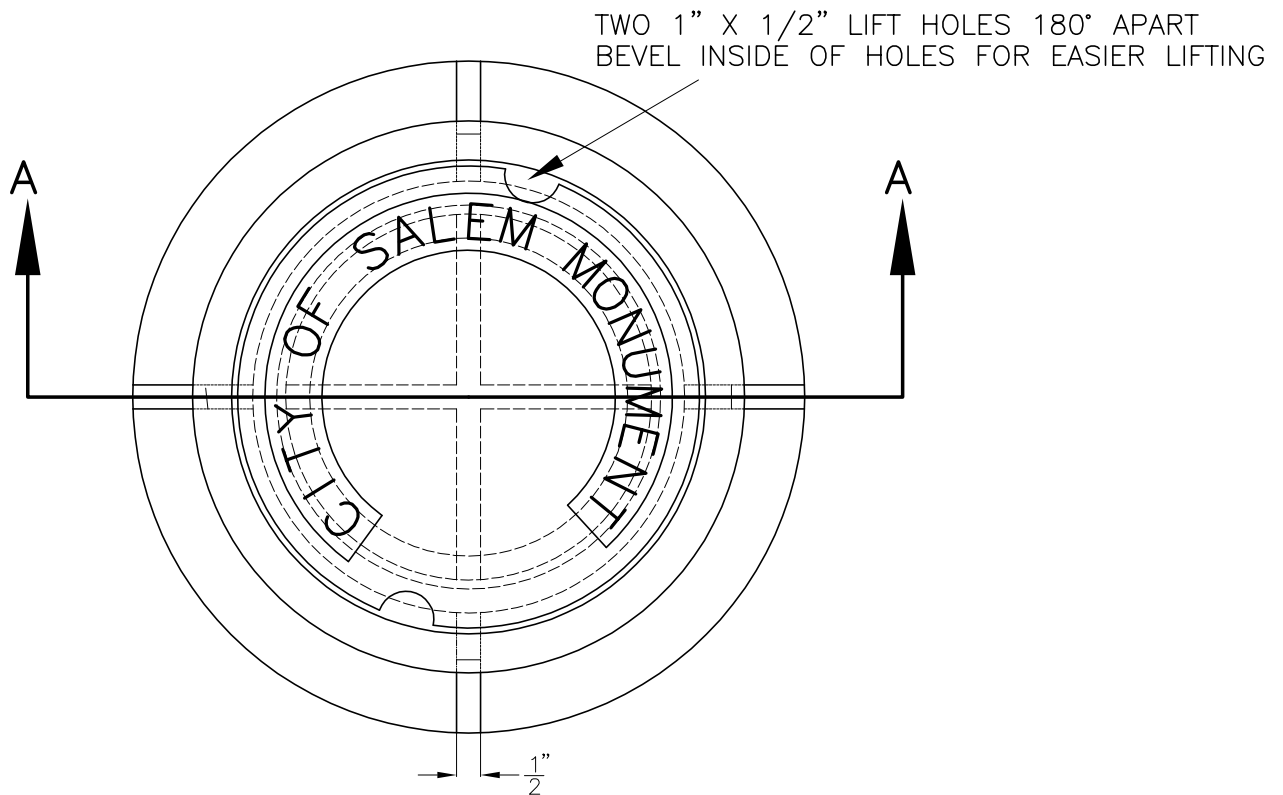
NO WOOD SHALL BE USED FOR GUARD RAILS, AND HI-EARLY CEMENT SHALL BE USED IF DIRECTED BY THE CITY ENGINEER. GROUT SUBGRADE WHEN UNSTABLE.

9-15-99  
Date



	City Engineer	Date
	CONVERT TO CAD DWG.	3/99
No.	Description	Date By Appr
REVISION		
CITY OF SALEM DEPARTMENT OF PUBLIC WORKS		
STANDARD PLAN R.R. TRACK CROSSING		
DRAWN BY GS	NO.007	
CHECKED BY D.W.		





SECTION A-A

NOTES:

1. MATERIAL SHALL BE A.S.T.M. A-48 GRAY CAST IRON, CLASS 30.
2. APPROX. WEIGHT: FRAME 56 LBS., COVER 20 LBS.

Approved Karl O. Shuster 9-15-99  
City Engineer Date

CITY OF SALEM  
DEPARTMENT OF PUBLIC WORKS

STANDARD PLAN

MONUMENT BOX CASTING DETAIL

DRAWN BY GS

CHECKED BY D.W.

NO.009

No.	CONVERT TO CAD DWG.	1/98	By	Appr
	Description	Date	By	Appr
	REVISION			