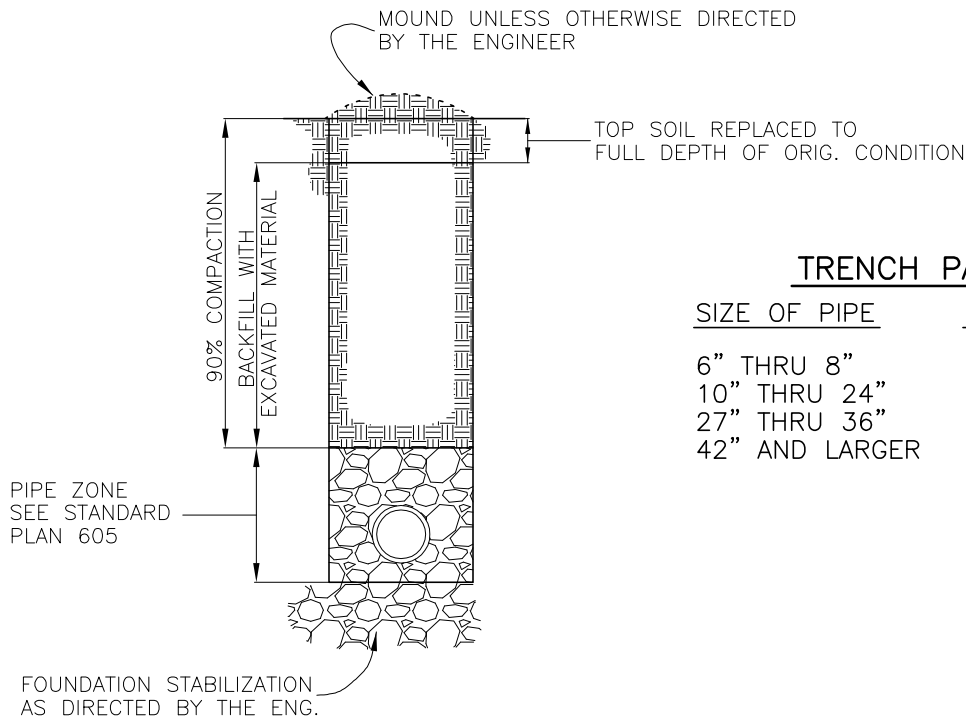


**CITY OF SALEM  
DEPARTMENT OF PUBLIC WORKS  
STANDARD DRAWINGS  
TABLE OF CONTENTS**

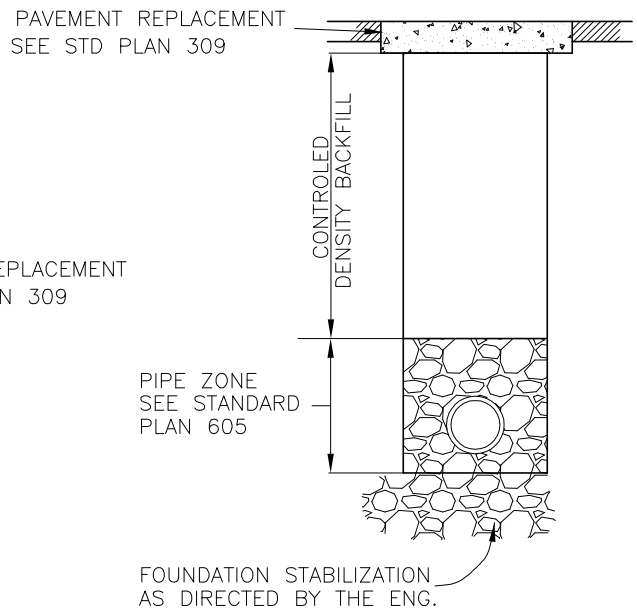
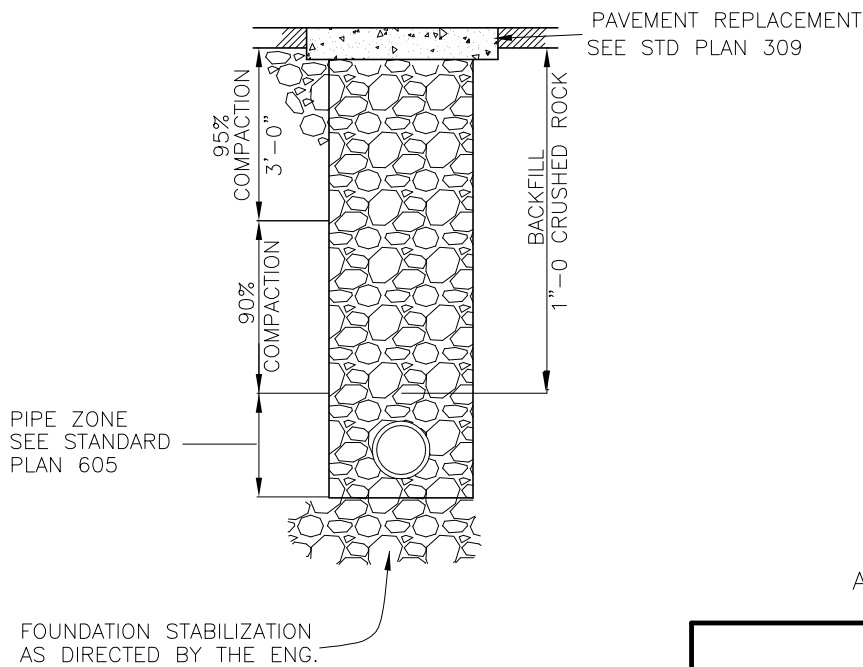
001-099	Miscellaneous
100-199	Sewers and Drains
200-299	Stormwater
300-399	Streets
400-499	Water
500-599	Structures
600-699	Earthwork
700-799	Street Lighting and Traffic Signals
800-899	Landscape and Irrigation
900-999	Erosion Control

<b>Plan No.</b>	<b>Title</b>	<b>Date</b>
<b>Earthwork</b>		
601	Pipe Trench	09-15-1999
605	Pipe Zone	02-23-2016



### TRENCH PAY WIDTH

<u>SIZE OF PIPE</u>	<u>PAY WIDTH OF TRENCH</u>
6" THRU 8"	2.5 FT.
10" THRU 24"	OUTSIDE DIAMETER PLUS 18"
27" THRU 36"	OUTSIDE DIAMETER PLUS 24"
42" AND LARGER	OUTSIDE DIAMETER PLUS 30"



Approved Karl O. Schuster 9-15-99  
City Engineer Date

## CITY OF SALEM DEPARTMENT OF PUBLIC WORKS

STANDARD PLAN

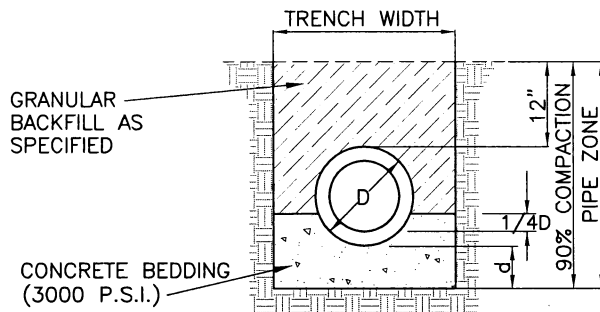
### PIPE TRENCH

DRAWN BY GS

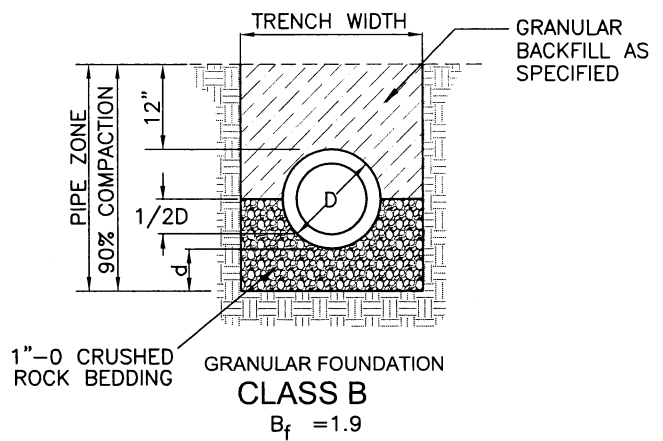
CHECKED BY D.W.

NO.601

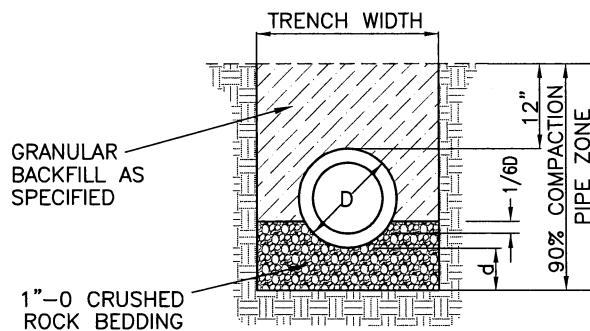
1	CONVERTED TO CAD DWG.	3/99		
No.	Description	Date	By	Appr
REVISION				



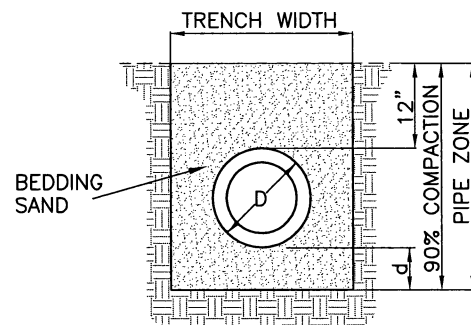
CONCRETE CRADLE  
CLASS A  
 $B_f = 2.8$



1"-0 CRUSHED  
ROCK BEDDING  
GRANULAR FOUNDATION  
CLASS B  
 $B_f = 1.9$



GRANULAR FOUNDATION  
CLASS C  
 $B_f = 1.5$



SAND  
CLASS D

## GENERAL NOTES

1. WHERE DIRECTED BY THE ENGINEER GRANULAR TRENCH STABILIZATION SHALL BE PLACED PRIOR TO PLACEMENT OF THE BEDDING. SIZE AND DEPTH ARE DEPENDENT ON SOIL CONDITIONS.
2. FOR ROCK OR OTHER INCOMPRESSIBLE MATERIALS, THE TRENCH SHALL BE OVEREXCAVATED A MINIMUM OF 6" AND REFILLED WITH GRANULAR MATERIAL AS DIRECTED BY THE ENGINEER.
3. BEDDING AND BACKFILL MATERIALS IN THE PIPE ZONE SHALL BE COMPACTED AS SPECIFIED PRIOR TO BACKFILLING THE REMAINDER OF THE TRENCH.
4. WHERE DIRECTED BY THE ENGINEER USE 1"-0 CRUSHED ROCK FOR ENTIRE PIPE ZONE. (SEE SCS 204.3.18)

## LEGEND

D = OUTSIDE DIAMETER  
d = DEPTH OF BEDDING  
MATERIAL BELOW  
PIPE

DEPTH OF BEDDING MATERIAL BELOW PIPE	
D	d(min).
12" & SMALLER	6"
15" to 36"	8"
42" & LARGER	10"

**CITY OF SALEM**  
**DEPARTMENT OF PUBLIC WORKS**

STANDARD PLAN  
**PIPE ZONE**

CHANGES	REMOVED COMMON BACKFILL AS OPTION	1/2016		

APPROVED *[Signature]* 2-23-10  
CITY ENGINEER

DRAWN BY JAK 1/2016  
CHECKED BY JPK 1/2016

**NO.605**